

Bolton Gate Company's Eurofold folding shutters have become the standard in the lift industry for reliability and strength. Their compact folding action ensures that as much of the opening width is utilised - a distinct advantage over sliding doors.

All the necessary testing and design considerations have been carried out to ensure the door meets the requirements of EN81-20 & 50 when specified.

STANDARD SPECIFICATION

Operation

The Eurofold Lift Door is manually operated.

Gate Frame

Eurofold's extra strength is gained from the gate frame which is formed from unique double channel vertical pickets made from galvanised steel, 1.2mm thick. These are interconnected by 2mm thick galvanised cold formed lattice bars.

The gate frame is top hung from a ball bearing pulley connected to the picket by zinc plated pulley brackets. At the bottom, the frame is fitted with zinc plated guide pieces designed to run in a bottom track.

Leading Edge

A 127mm wide pressed galvanised steel leading edge is provided. Prepared for locks, latches or interlock beaks with Number 10 bow handle fitted as standard.

Shutter Leaves

The shutter leaves are rolled from galvanised steel and are available in the standard width of 152mm. A 229mm leaf option is also available.

Top Track

The standard top track from which the shutter is suspended is constructed from two galvanised steel sections 90mm deep, bolted together to give a strong smooth running section for the shutter thus minimising friction. Only a small amount of headroom is required for the top track and variable packing is provided to allow adjustment in height during longer term service requirements.

Bottom Track

The bottom guide pieces are retained within a 25 x 26mm galvanised steel channel bottom track.

Fire Resistance

Landing doors are supplied in a fire-resisting version when specified. The door has been successfully tested to EN 81-58 for two hours fire resistance (E120 rating).



MAXIMUM SIZES

7 metres wide x 7 metres high

FINISH

Mainly galvanised steel with ungalvanised components finished with one coat of priming paint.

WEIGHT

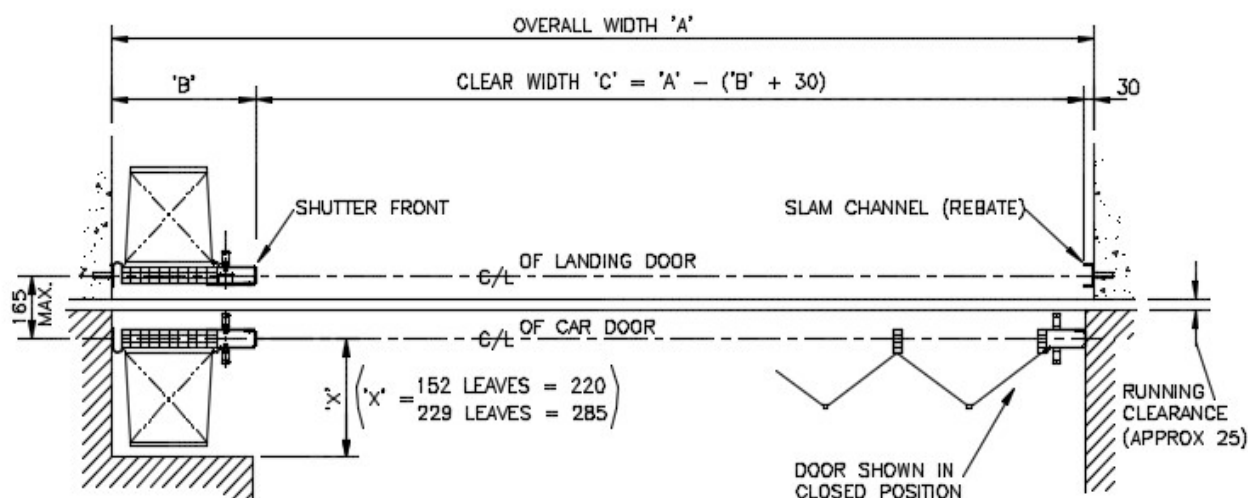
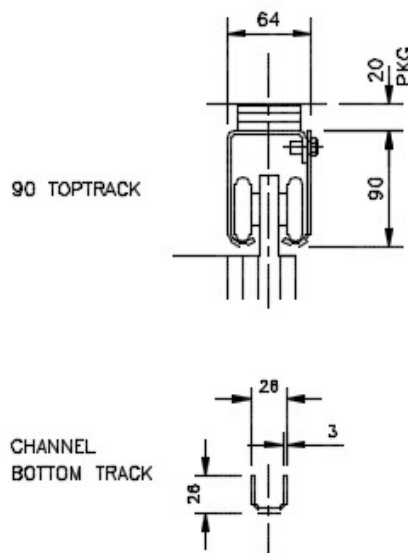
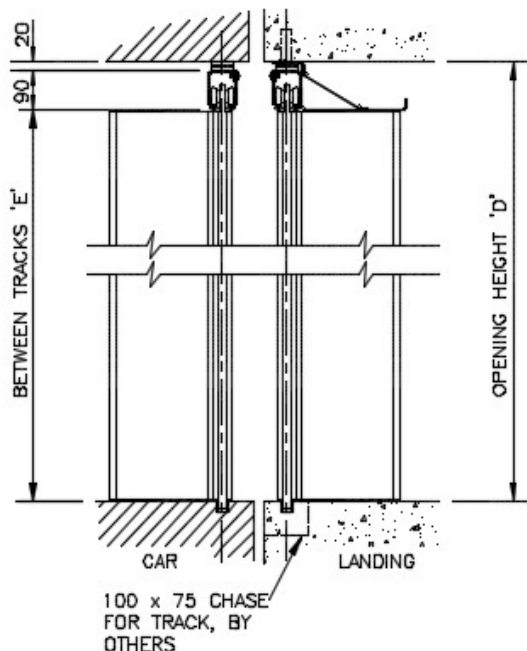
Approximately 35kgs per m².

OPTIONS

- Vision panel.
- Holdfast magnet.
- Mathews catch.
- VL10 gatelock / release mechanism (Landing doors).
- Electro-magnet (Car doors).
- Sub-frames.
- Polyester powder coating in a range of standard RAL colours.
- Stainless steel.

EUROFOLD LIFT DOOR

Folding Lift Shutter Door



152mm LEAVES	DIM 'C'	765	1030	1295	1560	1825	2090	2355	2620	2885	3150
	DIM 'A'	1020	1312	1604	1896	2188	2480	2772	3064	3356	3648
229mm LEAVES	DIM 'C'	1185	1590	1995	2400	2805	3210	3615	4020	4425	4830
	DIM 'A'	1440	1872	2304	2736	3168	3600	4032	4464	4896	5328
BUNCH	DIM 'B'	225	252	279	306	333	360	387	414	441	468

NOTE!

THE OVERALL WIDTH AND BUNCH DIMENSIONS ARE CALCULATED USING BOLTON GATE STANDARD 117 ROLLED OR 127 FABRICATED FRONTS. TOP TRACK LENGTH = OVERALL WIDTH - 12.

ALL DIMENSIONS IN mm