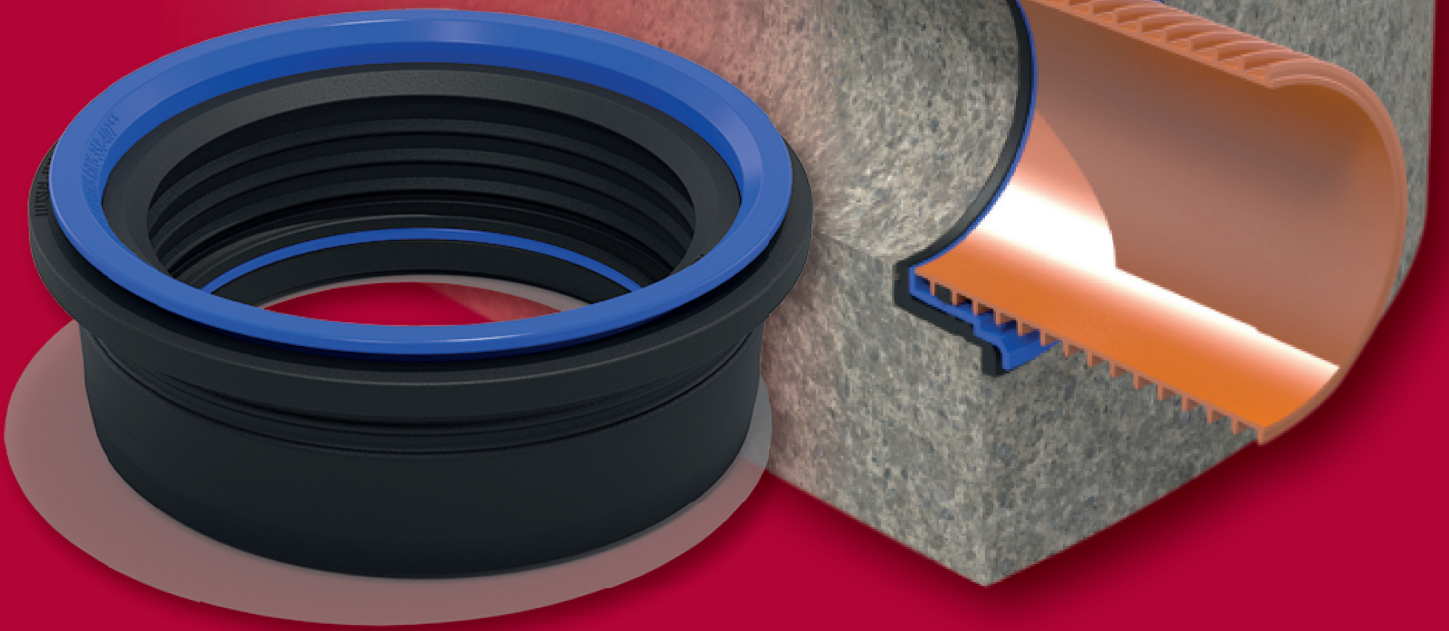


The Perfect Seal

Connecting DN150 lateral pipes into concrete structures



The perfect seal is a time and cost saving solution for fitting lateral (or branch) pipes into larger concrete pipes, manholes, junctions, catch pits or other concrete structures, at the time of casting or retro-fitting into a cored hole.

The seal uses three component parts to adjust the internal size depending on the lateral pipe material being fitted. The user can simply remove components to increase the internal diameter of the seal. All components conform to the latest standards for below ground applications. The universal nature of the Perfect Seal means that any DN150 lateral pipe with outside diameters between 158mm to 179mm can be fitted. The Perfect Pipe Seal removes the need to purchase and store multiple seals and adaptors for different pipe materials, simplifies project planning and supports specification changes.

Benefits

- Single product, universal solution
- Removes the need for adaptors
- Can be installed in seconds
- Can be cast into concrete during manufacture or cored and retro-fit
- Configuration can be altered in seconds
- Watertight connection for any DN150 Lateral*
- Smooth transition and level invert through to the connecting structure
- Integral product pipe stop removes the possibility of lateral intrusion
- Independently tested to over 1 bar pressure on all adoptable laterals

Material	ABS & EPDM Rubber
Pressure Rating	0.75 bar
Standards	EN681-1

* Will not fit Naylor Clay pipes (>179mm)

The Perfect Seal

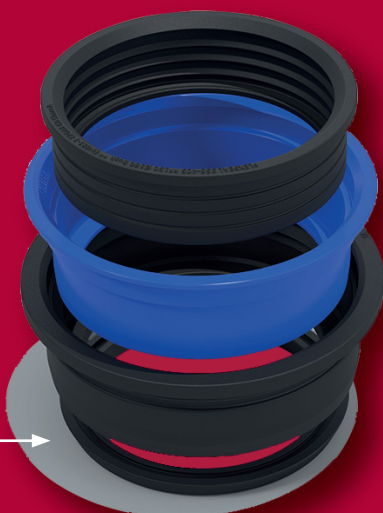
FF150 Specifications

Inner Bush
(160mm)

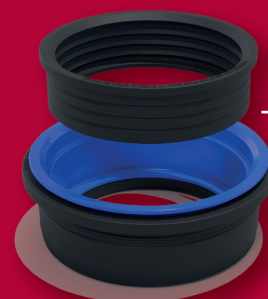
Central socket
(170mm)

Outer Body
(179mm)

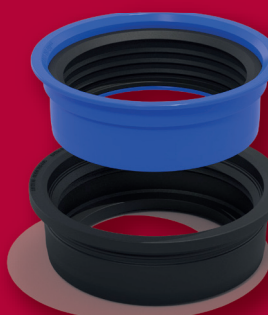
Optional Spacer
for deep socket
connection



Each component gives
smooth level invert transition.

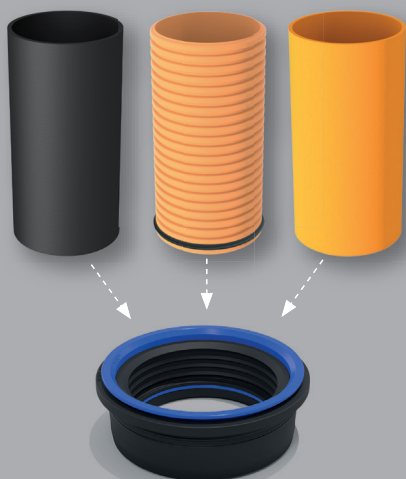


Rigid ring to allow Ribbed pipe
connection and casting capability.



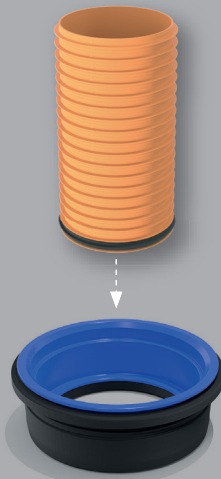
FF150 Pipe Fitting Options

Option 1



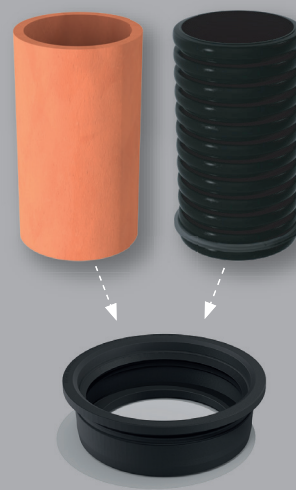
Complete assembly will allow
connections to any 160mm
OD pipe using the internal bush.
Including – PVC smooth, Marley
quantum, Polysewer, Cast Iron and Ultra 3.

Option 2



Remove internal 160 OD bush
connector when connecting 170mm
OD Ultrarib/ribbed pipe directly into
the casting ring socket (note the pipe
seal must be used in the first groove).

Option 3



Remove the two inner body
components (160mm OD bush & casting
ring) to allow connection to Supersleve
Clay and other twin wall pipe when
combined with manufactures pipe seal
in the first groove (Max OD – 179mm).