



Buyers Guide 2019



Water Management | Precast | Retaining Walls

Marshalls CPM

Marshalls CPM is a market leading manufacturer of precast concrete drainage products, with production facilities across the UK. This, combined with a network of specialist distributors, enables us to provide our customers with complete coverage.

The business is built on a solid reputation for delivering high quality products and providing a first class service, with diversification and innovation a key to our strength, we supply a vast range of sustainable precast products to every sector of the construction industry, fully supported by our experienced technical and engineering teams.

Marshalls CPM has built long-term partnerships with both customers and suppliers, including major contractors, water companies and national merchant distributors. We listen to our customers and work closely with them to provide solutions based on the sound design and engineering knowledge we have acquired through years of precast concrete production. In turn our suppliers work with us to constantly improve the quality of the products we manufacture and supply.

All weights shown are approximate and subject to change.

Prices are correct at time of publication and are subject to quantities required.

Should you require any further information please call 01179 814500, email salesemail@marshalls.co.uk or visit www.cpm-group.com

Index	Page
--------------	-------------

Drainage Solutions

• Flexible jointed pipes	2
• Integral jointed pipes	3
• Ovoid pipes	3
• Chamber rings and soakaways	4
• Cover slabs / sealant	5
• Landing slabs	6
• Adjusting units / Adjusting Slabs	7
• Caisson shaft sinking system	8
• Caisson cover slabs	9
• House inspection chambers	9
• Rectangular manholes	11
• The perfect manhole system	11
• Gullies/gully cover slabs	12
• L Shape retaining walls	13
• Integrated ladder system	13
• Box culverts	13

Off-Site solutions

• Hydro-Brake® chamber	14
• Penstock chamber	14
• Weir-Wall chamber	15
• Downstream Defender®	15
• First Defence®	16
• Up-Flo™ Filter Chamber systems	16
• Stormwater attenuation systems	17
• Wastewater Management Systems	17
• T-T Ready Sump®	18
• Landfill systems	18

Redi-Rock™ Retaining Wall Solutions

• Redi-Rock™ Modular Walling	19/20
------------------------------	-------

Marshall's CPM Drainage Solutions

Flexible Jointed Pipes BS EN1916:2002/BS5911-1:2002



Marshall's CPM offer an extensive range of precast concrete flexible jointed pipes from 225mm to 1800mm including bends, junctions and fittings for use in foul and storm water gravity systems.

Diameter mm	Effective Length m	Weight kg	Price per metre £
+ 225	1.25	122	22.83
+ 1350	2.50	4600	372.55
* 1500	2.50	5230	473.98
* 1600	2.50	5702	561.93
1800	2.50	7150	659.22

Rocker pipes 3 x m rate

+ Roll ring joint

Butt pipes 3 x m rate

*Lamell joint

Bends 45° @ 10 x m rate

Bends > 45° @ 15 x m rate

Junctions	Diameter	Price £ Extra over
All 100/150 off junctions and 150 uni-junctions	225 - 600	7 x m rate
	675-1200	4.5 x m rate
	1350+	4 x m rate

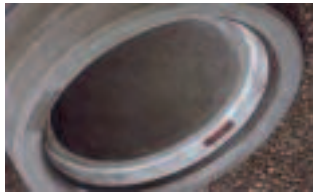
Lifting chains available 1200mm dia & above @ £1675.55
set 70% refund on return to works.

For details on the Pipe Lifter please visit

[www.cpm-group.com/drainage/concrete-pipes-downloads/BPDA lifting solutions](http://www.cpm-group.com/drainage/concrete-pipes-downloads/BPDA%20lifting%20solutions)

Marshall's CPM Drainage Solutions

Integral jointed pipes BS EN1916:2002/BS5911-1:2002



Integral jointed pipes offer quick and easy installation. All precast concrete pipes are manufactured to DC Class 4 of BRE Special Digest 1.

Diameter mm	Effective Length	Weight kg	Price per metre £
300	1.25	217	24.56
300	2.50	420	24.56
375	2.50	510	30.45
450	2.50	705	38.38
525	2.50	900	47.11
600	2.50	1200	59.18
675	2.50	1275	101.61
750	2.50	1920	116.62
825	2.50	1820	146.16
900	2.50	1920	155.71
1050	2.50	2590	197.71
1200	2.50	3550	268.30

Rocker pipes 3 x m rate

Butt pipes 3 x m rate

Bends 45° @ 10 x m rate

Bends > 45° @ 15 x m rate

Lubricant to be used @ £9.50 per 2.5kg tub.

Ovoid pipes BS EN1916:2002/BS5911-1:2002



Offering lower operating costs where some sewers may be laid without the need for pumping and reduced costs of trench excavation resulting from shallower gradients.

Height x Width	Effective Length m	Weight kg	Price per metre £
600x400	1.25	910	151.50
900x600	2.50	2170	190.70
1200x800	2.50	3300	223.93

Marshall's CPM Drainage Solutions

Chamber rings and soakaway units BS EN1917:2002/BS5911-3:2010



Precast chamber rings and soakaways from 900mm to 4000mm are available in varying depths with tongue and groove joints.

Diameter mm	No of 75mm Perforations Per metre	Weight/ m	Price per m £
*900 N/S	12	530	85.82
1050	16	710	91.05
1200	16	912	110.95
1350	16	1080	174.13
1500	20	1330	204.75
1800	24	1760	294.44
2100	24	2140	592.87
2400	28	2740	765.15
2700	32	3400	889.75
3000	36	4140	1235.72
3660* +	44	5300	POA
4000* +	48	6360	POA

* Non Kitemarked

+ *Two piece unit that provides super-fast installation*

Prices for chamber rings only.

Surcharges:

Plus 100% 250mm depths (available from 900mm to 1200mm diameters)

Plus 50% 500mm depths (available from 900mm to 3600mm diameters)

Plus £11.18/mt non stepped products

Rungs @ £8.43 each

Soakaway holes @ £6.65 each

* Includes non-stepped surcharge

Lifting bolts £145.23 each

Marshall's CPM Drainage Solutions

Cover Slabs

BS EN1917:2002/BS5911-3:2010



Marshall's CPM offer a wide range of heavy duty cover slabs ex-stock. Bespoke cover slabs can be made to order.

Diameter mm	Approx weight (Based on a 675 ² opening) kg	Price each £
900	235	94.25
1050	235	99.95
1200	356	121.35
1350	503	194.54
1500	890	221.75
1800	1208	349.01
2100	1745	740.60
2400	2200	1020.96
2700	3380	1610.74
3000	4300	2034.43
3660*	7940	POA
4000*	10035	POA

* Not 'kitemarked'.

Prices are for 600x600, 675x675 & 750x600 accesses where applicable.

Sealant and Primer

Size	Dia	m per joint	Price per box £
12 X 60	900	3.5	71.90 (24m)
	1050	4	
	Rect. Manhole	4.5	
12 X 80	1200	4.5	64.04 (18m)
	1350	5	
	1500	5.5	
	1800	6.5	
12 X 120	2100	7.5	51.38 (12m)
	2400	8.5	
	2700	9.5	
	3000	10.5	
PRIMER	ALL		20.70 per 5 litres

Marshall's CPM Drainage Solutions

Landing Slabs - Type 1

Diameter mm	Access mm	Weight kg	Price £
1500	900	1060	288.28
1800	900	1500	453.72
2100	900	2120	962.78
2400	900	2865	1327.23
2700	900	4195	2093.97

Landing Slabs - Type 2

Diameter mm	Access mm	Weight kg	Price £
3000	900	4490	2644.77
4000*	900	7540	POA

*Non Kitemarked

Landing Slabs - Type 1

Diameter mm	Shaft mm	Weight kg	Price £
1200	900	598	157.74
1350	900	780	252.92
1500	900	1030	288.28
1500	1050	1060	288.28
1800	1050	1460	453.72
1800	1200	1500	453.72
1800	900	1430	453.72
2100	900	2120	962.78
2100	1050	2150	962.78
2100	1200	2190	962.78
2400	900	2865	1327.22
2400	1050	2890	1327.22
2400	1200	2930	1327.22
2700	900	4195	2093.97
2700	1050	4230	2093.97
2700	1200	4260	2093.97

Marshall's CPM Drainage Solutions

Reducing Slabs - Type 2

Diameter mm	Shaft mm	Weight kg	Price £
3000	900	4490	2647.77
3000	1050	4731	2647.77
3000	1200	4768	2647.77
3660*	900	7635	POA
3660*	1050	7480	POA
3660*	1200	7296	POA
4000*	900	10000	POA
4000*	1050	9760	POA
4000*	1200	9580	POA

*Non kitemarked .

Adjusting units BS EN1917:2002/BS5911-3:2010

Cover frame seating rings are reinforced 65mm deep units which can be used in place of engineering bricks to adjust the ductile or cast iron covers and framers to the required level.

Access mm	Weight kg	Price £
600x600	70	34.61
675x675	65	34.61
750x600	70	59.47
750x750	80	59.47

Marshalls CPM Drainage Solutions

Caisson shaft sinking system BS EN 1917:2002/BS 5911-3:2010



Marshalls CPM offer reinforced precast concrete manhole units specially designed for sinking by using by the caisson method. This is achieved by using a shaft sinking plate system and is widely used for construction of pumping station, wet wells and manholes, particularly in difficult ground conditions.

Diameter mm	Weight/m kg	Price per m
2000*	2130	POA
2400	2055	POA
2740*	3580	POA
3000	4270	POA
3660*	5300	POA
4000*	6360	POA

*Non kitemarked

Surcharge on 500mm and 750mm depths apply

Marshall's CPM Drainage Solutions

Caisson Cover Slabs

Diameter mm	Access mm	Weight kg	Price each
2000	600x600	1.725	POA
2000	675x675	1.690	POA
2000	750x600	1.690	POA
2000	1200x675	1.529	POA
2400	600x600	2.235	POA
2400	675x675	2.200	POA
2400	750x600	2.200	POA
2400	1200x675	2.004	POA
2740	600x600	3.213	POA
2740	675x675	3.170	POA
2740	750x600	3.170	POA
2740	1200x675	2.947	POA
3000	600x600	4.350	POA
3000	675x675	4.300	POA
3000	750x600	4.300	POA
3000	1200x675	4.103	POA
3660*	600x600	8.000	POA
3660*	675x675	7.940	POA
3660*	750x600	7.940	POA
3660*	1200x675	7.760	POA
4000*	600x600	10.410	POA
4000*	675x675	10.350	POA
4000*	750x600	10.350	POA
4000*	1200x675	10.110	POA

*Supplied in two pieces

Reducing slabs available upon request

Marshall's CPM Drainage Solutions

House Inspection Chambers BS EN 1917:2002/BS 5911-4:2002



Marshall's CPM manufacture a range of precast concrete inspection chambers in a variety of depths, with tongue and groove joints which are easily handled and excavation below ground is kept to a minimum.

Internal Dimensions mm	Depth mm	Weight kg	Price £
600x450	150	44	12.46
600x450	225	58	16.15
600x450	300	86	20.54
750x600	150	67	18.07
750x600	225	100	22.85
750x600	300	134	27.11
1000x675	150	83	28.55
1000x675	225	130	31.00

HIC Top Sections for Metal Cover (Type 1)

To fit Chamber Section	Depth mm	Weight kg	Price £
600x450	60	42	16.38
750x600	50	44	20.75
1000x675	50	89	28.15

HIC Top Sections complete with 450x600 Concrete Cover

To fit Chamber Section	Depth mm	Weight kg	Price £
600x450	110	101	33.25
750x600	110	122	38.99
1050x675	110	190	63.33

Marshall's CPM Drainage Solutions

Rectangular manholes BS EN1917:2002/BS5911-3:2002



Rectangular manholes comply with the recommendations in the Water Services Association publications Sewers for Adoption, where the manhole from ground level to the soffit of the pipe is 1.45m or less, in light or main road situations.

Internal Dimensions mm	Depth mm	Weight kg	Price £
1200x750	150	115	35.90
1200x750	225	173	44.52

Slabs @ £117.57 each

The Perfect Manhole System



- **Build Faster** - Speedy installation
- **Build Leaner** - Saves material and labour / No waste
- **Build Greener** - Up to 40% lower greenhouse gas emissions
- **Build Safer** - No confined space working, excavation closed quicker
- **Build to Last** - 120 Year design life
- **Build Quality** - Produced in a quality controlled factory environment

Marshall's CPM introduced the 1200 Perfect Manhole in 2009, today it is available in 1200mm, 1500mm and 1800mm. The sealed manhole is designed and manufactured to last a minimum of 120 years.

Marshalls CPM Drainage Solutions

Gullies BS 5911-6:2010 Kitemarked

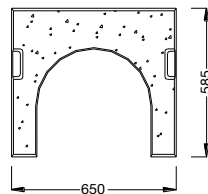


Marshalls CPM produce a range of precast concrete road gullies with a 150mm trapped outlet that are typically used in highways and parking areas.

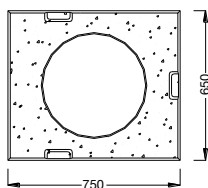
Diameter mm	Depth mm	Weight kg	Price each £
375	750	188	56.46
375	900	216	58.87
450	750	260	58.87
450	900	290	63.22
450	1050	320	68.81

Adapter £5.64

Gully cover slabs



Gully cover slabs are available in both square and U shaped, with handling recesses for lighting brackets that are designed as a seating for gully grates and used on top of a 450mm gully



Dimensions mm	Type	Weight kg	Price each £
750x650	Square	80	29.23
650x585	U-Shape	50	29.23

Lifting brackets for gully covers £44.68

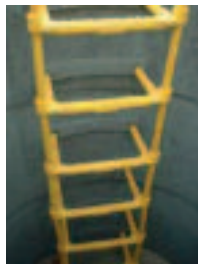
Marshalls CPM Drainage Solutions



Marshalls CPM L sections are both simple and quick to install as well as being easy to handle. The L shape walling requires a suitable concrete foundation to ensure they match both ground bearing and stability requirements which should be sourced from a qualified engineer.

Price on application

Integrated Ladder System



Marshalls CPM in conjunction with Caswick, the market leading supplier of steps / rungs in the UK, has developed a factory fitted ladder system for manholes providing a safe, quick, cost effective off-site solution. This innovative product has been designed to provide safer access and egress to precast manholes, caisson shafts and inspection chambers

Price for 150mm projection £11.17 each

Price for 200mm projection £16.75 each

Top location bracket and end caps £26.49 per set

(set includes 2x top location brackets and 2x end caps.)

25 metre stringer coil £88.42 each.

Box Culverts



Marshalls CPM box culverts are specified and used regularly throughout the construction industry including the agricultural, civil engineering, commercial, housing, industrial and private sectors.

Marshalls CPM offer box culverts from 1000mm up to 4200mm wide in varying heights and lengths that are individually made to suit the customers' requirements as well as a range of standard sizes available from stock

Price on application

Marshalls CPM Off-Site Solutions

Hydro-Brake® Chambers



The Hydro-Brake Optimum® chamber comprises of a precast concrete chamber base containing a bespoke Hydro-Brake Optimum® Flow Control which is delivered to site ready for immediate installation.

As the Hydro-Brake Optimum® Flow Control is already installed in the chamber complete with preformed benching (preformed benching with standard units only), installation is cut to a fraction of the time compared to conventional methods. Inlet hole(s) are cored or formed prior to delivery and are made to suit exact site requirements.

A range of outlet pipe sizes are also available to suit site requirements.

Price on application

Penstock flow control chamber



Marshalls CPM Penstock chambers consist of a precast chamber design that includes a prefitted penstock already installed enabling the contractor to install the flow control chamber in a fraction of the time it takes using conventional methods.

The Marshalls CPM one-piece chamber is fabricated using a base unit complying with BS EN 1917:2002.

Price on application

Email salesemail@marshalls.co.uk

Marshalls CPM Off-Site Solutions

Weir Wall flow control chamber



Marshalls CPM have designed this off-site solution precast chamber to accommodate a weir wall that can be pre-fitted either a Hydro-Brake Optimum™, Hydro-Brake®, Penstock, Non-Return Flap Valve, Orifice plate or a combination of them.

The precast concrete chamber can be designed to suit most pipe sizes and at any chamber depth, the design also includes a twin access heavy duty precast concrete cover slab

Price on application.

Downstream Defender® treatment system



The Downstream Defender® is an advanced hydrodynamic vortex separator for the effective and reliable removal of fine particles along with oils and other floatable debris from surface water runoff.

Its innovative design delivers efficiency across a wide range of flows in a much smaller footprint than conventional or other swirl-type devices and is the perfect choice for any catchment likely to convey high quantities of contamination.

Price on application.

Email salesemail@marshalls.co.uk

Marshall's CPM Off-Site Solutions

First Defence®

The First Defence® is an economical hydrodynamic vortex separator for effective removal of sediment, litter and oil from surface water runoff.

Captured pollutants are kept safely within the device keeping public areas free from harmful pollutants. Suitable for at-source pollution control in small to medium size catchments, the First Defence® provides space-saving, easy-to-install surface water treatment in a standard size precast concrete manhole.



Price on application

Up-Flo™ Filter Chamber System

The Up-Flo™ Filter is an innovative surface water filtration technology that delivers a high-performance multi-stage treatment process within a single device. The Up-Flo™ Filter combines sedimentation screening with fluidised bed filtration technology to deliver high levels of performance.

Easy to maintain and with low construction costs, the Up-Flo™ Filter achieves a high quality of surface water discharge in a much smaller footprint than alternative systems.



Price on application

Marshalls CPM Off-Site Solutions

Stormwater Attenuation Systems



As the increasing impact of developments in urban areas compromises the natural flow patterns of the water cycle, leading to an increase in the volume and flow rate, together with detrimental impact on the quality of surface water runoff, storm attenuation products are being a necessity.

With the increased volume of water runoff, coupled with faster flow rates could lead to an increased risk of flooding downstream if the local sewer or watercourse does not have sufficient capacity to cope, extra attenuation will be required, but normally with a restriction on the flow rate from the site.

Price on application

Wastewater Management Systems

Marshalls CPM can offer a fast, effective precast solution to modern wastewater developments.

Whether it be a domestic or commercial project, Marshalls CPM can supply precast concrete modular tanks, wall panels, flat pack chambers, circular chamber systems, surge flushing manholes, valve chambers or wet well chambers which will save you on both installation costs and time spent on site.

Price on application

Email salesemail@marshalls.co.uk

Marshalls CPM Off-Site Solutions

T-T Ready Sump®



Price on application

A unique design that incorporates the key features required for sewage, drainage and effluent stations and that meets the adoptable standards demanded by the water companies.

These engineered sumps are produced to high standards with a quality controlled process using precision tools. They have been specifically designed and built with efficiency and cost saving in mind. As a standard product the Ready Sump® is a stock item and available for delivery to your site on short lead times and to suit your requirements.



Price on application

Marshalls CPM is able to offer precast concrete landfill shaft sections for waste management systems and landfills that successfully overcome the issue of high lateral forces and frictional drag within landfill sites.

Marshalls CPM has developed a Lechgate monitoring and extraction shaft system, as waste landfill sites produce high lateral forces and frictional drag, which has proved problematic for existing traditional style shafts.

The development of a precast concrete landfill shafts has overcome the unique problems encountered due to its high strength and jointing system.

Email salesemail@marshalls.co.uk

Marshalls CPM Retaining Walls Solutions

REDI-ROCK™ Modular Walling System

Marshalls CPM CE Marked, BBA Approved Redi-Rock™ modular wall system is an ingenious, space saving solution for the retention of earth for a wide range of retaining, force protection, landscaping and flood protection applications.

Features :

- Dry fix – no mortar
- Very fast installation
- Build in any weather
- Part made with recyclable materials
- Engineered strength
- Requires minimal working space
- Full design service
- Appearance of natural stone
- Optimal land use



Redi-Rock™ by Marshalls CPM provides extensive engineering support to make it easy to design your solution, this includes AutoCAD, BIM (Building Information Modelling) and free engineering analysis software.

Redi-Rock™ big block system is versatile enough to achieve height without compromising strength and requires less space than traditional methods of construction. The blocks have a profile that interlocks them to each other and because of the high mass of the block less earth moving is required behind the wall and under most circumstances geogrid is not needed.



Email redi-rock@marshalls.co.uk

Marshalls CPM Modular Walling

REDI-ROCK™

“Big concrete blocks for retaining walls and more with the look of natural stone



Each block weighs approximately one tonne and is dry laid. Walls can be built in a fraction of the time and cost compared with other methods. Due to the dome and groove joint – straight or curved walls can be constructed. REDI-ROCK™ concrete blocks from Marshalls CPM offer quality sustainable solutions for many applications.



Price on application

Enquiries to redi-rock@marshalls.co.uk

Conditions

Plus VAT charged at current rate

Part load haulage applies to loads less than 23 tonnes POA

All deliveries on articulated flatbed lorries, crane off load and rigid vehicles available at additional cost POA.

For full term and conditions please visit www.cpm-group.com

Complete UK Coverage

ENGLAND / WALES SALES AND SOUTHERN WORKS

Marshalls CPM, Mells Road, Mells,
Nr Frome, Somerset, BA11 3PD
Tel: 01179 814500 Fax: 01179 814511

NORTHERN WORKS

Marshalls CPM, Pollington, Goole,
East Riding of Yorkshire, DN14 0DU
Tel: 01405 860591 Fax: 01405 863606

SCOTLAND SALES

Marshalls CPM, 101 Main Street, Newmains,
Wishaw, Lanarkshire, ML2 9BG
Tel: 01698 386922 Fax: 01698 387167

PERFECT MANHOLE SALES

Marshalls CPM, 1st Floor Alexandra Mill,
Queen Street, Leek,
Staffordshire, ST13 6LP
Tel: 01538 380500 Fax: 01538 380510

TECHNICAL OFFICES

Marshalls CPM, CPM House,
Heath Mill Road, Wombourne,
Staffordshire, WV5 8AP
Tel: 01902 356220 Fax: 01902 356221



salesemail@marshalls.co.uk
www.cpm-group.com