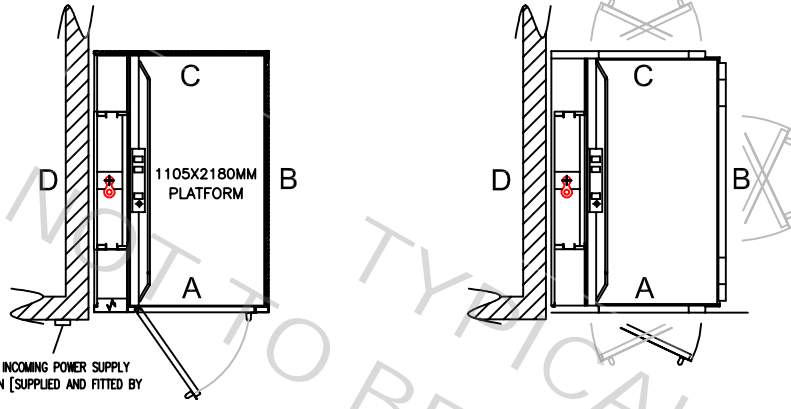
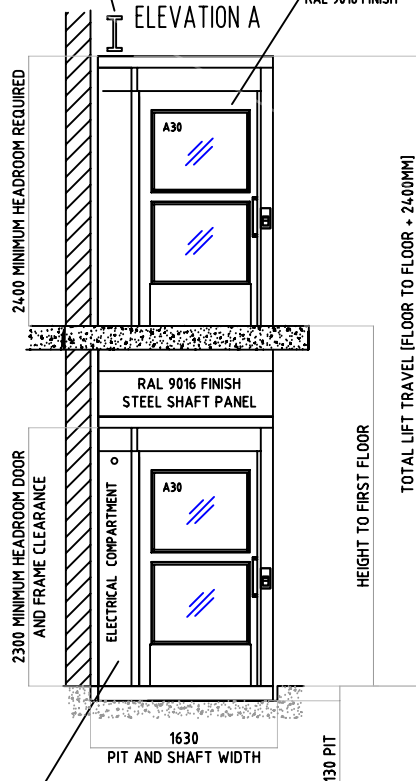


## ALTERNATIVE PLATFORM SIZES

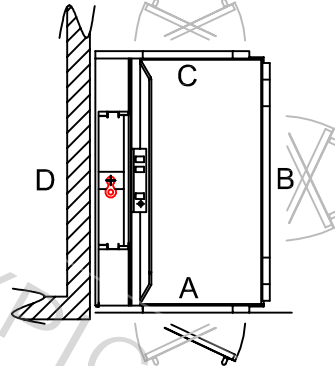


LIFTING EYE OR BEAM TO BE SUPPLIED BY OTHERS [SWL 500KG] APPROX 250MM ABOVE LIFT

A30 STEEL GLAZED DOOR WITH MID BAR  
/RAL 9016 FINISH



ACCESS REQUIRED FOR ELECTRICAL  
COMPARTMENT AND EMERGENCY  
BATTERY LOWERING

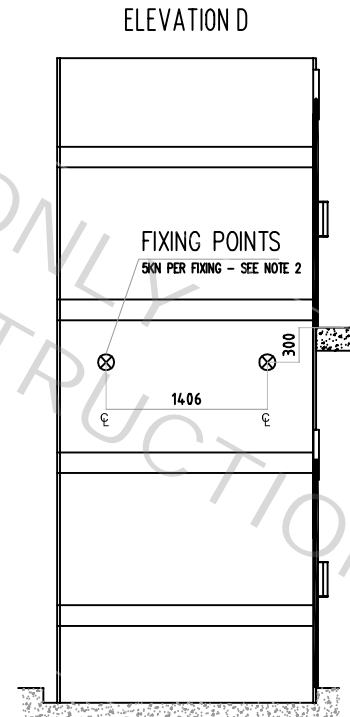
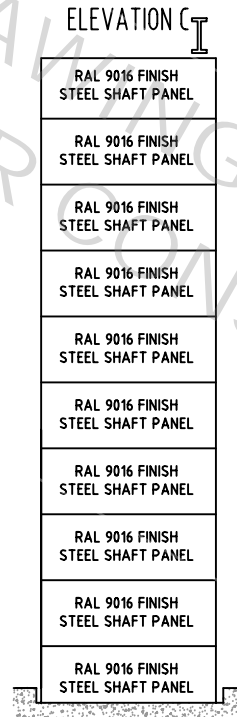
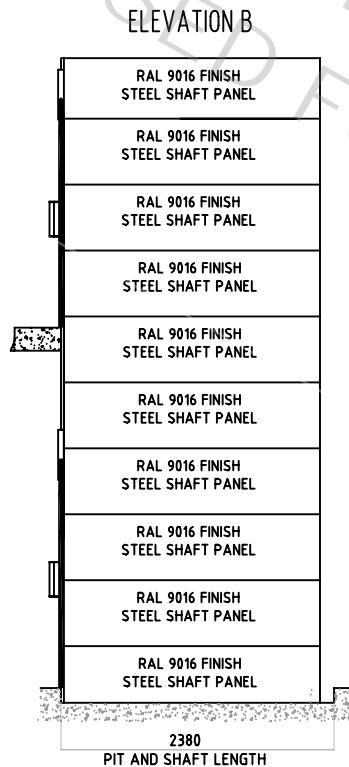


## ALTERNATIVE PLATFORM SIZES

| PLATFORM SIZE         | FOOTPRINT             |
|-----------------------|-----------------------|
| 1105 WIDE X 2180 LONG | 1630 WIDE X 2380 LONG |
| 1405 WIDE X 1980 LONG | 1930 WIDE X 2180 LONG |
| 1405 WIDE X 2480 LONG | 1930 WIDE X 2680 LONG |

\* SIZE SHOWN ON THIS DRAWING

|                    |
|--------------------|
| DOOR OPENING WIDTH |
| 1000mm             |



**NOTE: GLASS SHAFT PANELS ARE SHOWN FOR ILLUSTRATION PURPOSES ONLY.  
WHITE STEEL SHAFT PANELS ARE PROVIDED AS STANDARD.  
REFER TO QUOTATION FOR DETAILS**

DIMENSIONS IN MM

|  |       |
|--|-------|
|  | SCALE |
|  | NTS   |

|            |                 |                    |                        |
|------------|-----------------|--------------------|------------------------|
| DWG<br>No. | <b>A8 TD 01</b> | ISSUE:<br><b>A</b> | PAGE:<br><b>1 of 1</b> |
|------------|-----------------|--------------------|------------------------|

**CIBES LIFT UK LTD**



|  |
|--|
| <p><b>HEAD OFFICE</b><br/>         CHAPEL HOUSE<br/>         LEICESTER ROAD, LOUGHBOROUGH<br/>         LE11 2AF<br/>         TELEPHONE: 01509 436 022</p>                              |
| <p><b>CENTRE OF EXCELLENCE</b><br/>         UNITS 2 &amp; 3 ENTERPRISE HOUSE, THOMLINSON<br/>         ROAD, HARTLEPOOL,<br/>         TS25 1NS<br/>         TELEPHONE: 01429 426222</p> |

### GENERAL NOTES

- 1) A 130MM DEEP PIT IS REQUIRED ON SITE FOR THE LIFT TO SIT INTO TO GIVE LEVEL ACCESS AT THE LOWER FLOOR (130MM PIT +6MM/-0MM)
- 2) IT WILL BE NECESSARY FOR THE BUILDER TO PROVIDE SUPPORT FOR THE LIFT ON SIDE D
- 3) THE SUPPORT WALL MUST BE PLUMB TO  $\pm 5\text{MM}$ . THE RELATIONSHIP BETWEEN THE LIFT BASE AND THE WALL / FIXING LOCATION IS TO BE PLUMB AND SQUARE  $\pm 0/+10\text{MM}$ .
- 4) THE FLOOR TO CEILING HEIGHT REQUIRED IS A MINIMUM OF 2300 (WITH PIT - 2430 NO PIT), A CLEAR HEADROOM OF 2400MM WOULD BE REQUIRED ABOVE THE UPPER FLOOR LEVEL IN ORDER TO FIT A STANDARD UNIT.
- 5) THE STANDARD COLOUR OF THE PLATFORM LIFT SHAFT PANELS IS WHITE RAL 9016 FINISH. OTHER COLOURS ARE AVAILABLE ON REQUEST.
- 6) THE UNIT IS RATED AT 1000KG AS STANDARD
- 7) OTHER LIFT SIZES ARE AVAILABLE. PLEASE CONTACT THE OFFICE FOR OTHER OPTIONS.

## ELECTRICS

**THREE PHASE SUPPLY:**

A PERMANENT 415V 3 PHASE 50HZ SUPPLY IS REQUIRED (4 WIRE - NEUTRAL & EARTH) PROTECTED BY A 20 AMP FUSED AND **LOCKABLE ISOLATOR** ISOLATOR TO BE POSITIONED EXTERNALLY OF THE LIFT ENCLOSURE. SUPPLIED AND FITTED BY OTHERS WITHIN 500MM OF THE ELECTRICAL COMPARTMENT.

# A8000

DO NOT SCALE - IF IN DOUBT ASK

|       |            |                 |             |    |
|-------|------------|-----------------|-------------|----|
|       |            |                 |             |    |
| A     | 24/11/2016 | INITIAL DRAWING | DRAWN BY:   | CT |
| ISSUE | DATE       | DESCRIPTION     | CHECKED BY: | CD |

|                   |  |
|-------------------|--|
| DRAWING<br>TITLE: | A8000 OPEN FRONT 1105 WIDE<br>X 2180 LONG PLATFORM |
|-------------------|--|

|            |                 |                    |                        |
|------------|-----------------|--------------------|------------------------|
| DWG<br>No. | <b>A8 TD 01</b> | ISSUE:<br><b>A</b> | PAGE:<br><b>1 of 1</b> |
|------------|-----------------|--------------------|------------------------|