

ALTERNATIVE PLATFORM SIZES

ALTERNATIVE DOOR HANDINGS

PLATFORM SIZE	FOOTPRINT
1000 x 1500mm	1400 x 1625mm
1100 x 1500mm	1500 x 1625mm
1100 x 1600mm	1500 x 1715mm

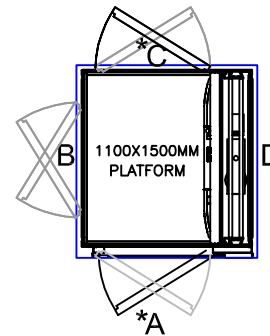
[w x d,mm]

[w x d,mm]

*

* SIZE SHOWN ON THIS DRAWING

A5000 | 2 STOP | THROUGH ENTRY



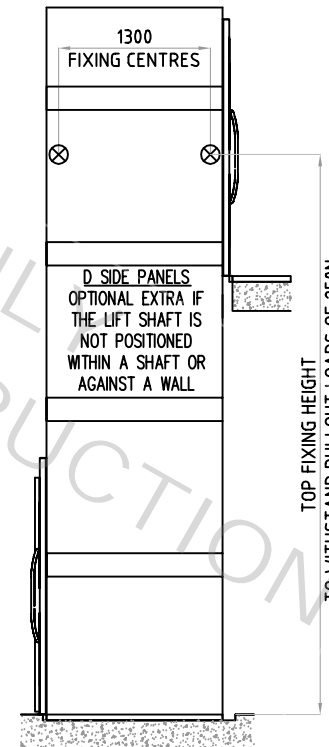
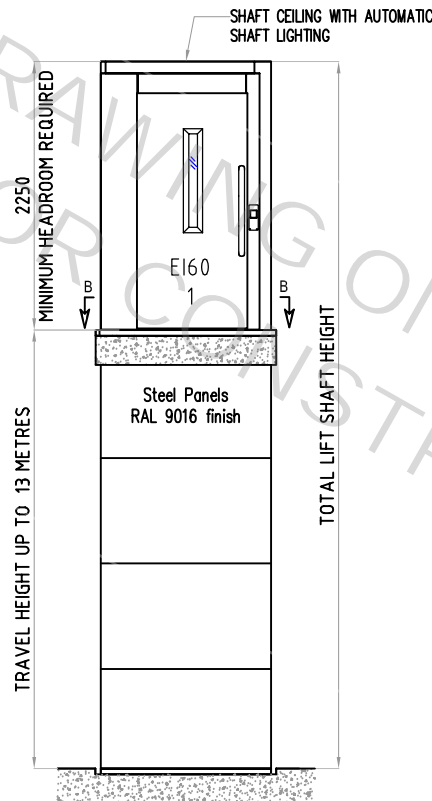
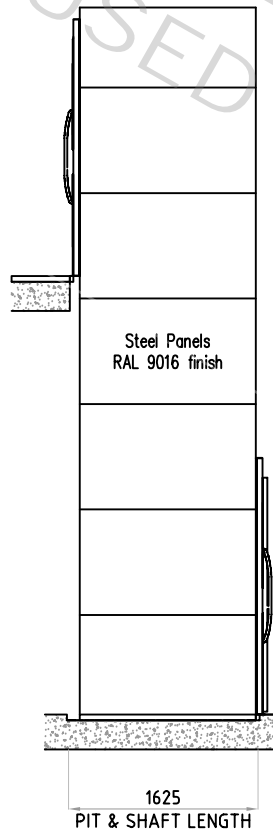
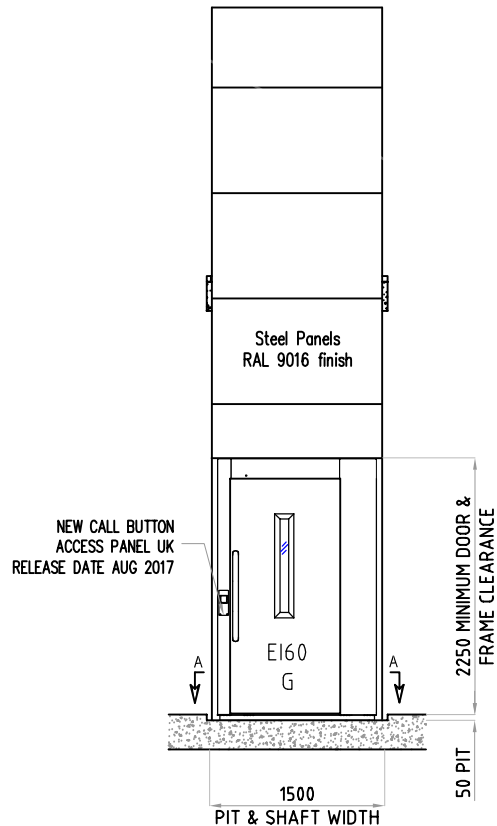
* POSITION SHOWN ON THIS DRAWING

ELEVATION A

ELEVATION B

ELEVATION C

ELEVATION D



A5000

DO NOT SCALE - IF IN DOUBT ASK

A	30/03/2017	INITIAL DRAWING	DRAWN BY:	CT
ISSUE	DATE	DESCRIPTION	CHECKED BY:	CD
DRAWING TITLE:	A5000 THROUGH ENTRY [FIRE DOORS]			
DWG No.	A503FD	ISSUE:	A	PAGE: 1 of 2

FIRE DOORS: AFTER INSTALLATION THE CLIENT WILL NEED TO SEAL THE STRUCTURE UP TO THE DOOR FRAMES AT EACH LEVEL TO ACHIEVE THE REQUIRED FIRE RATING. WHEN FORMING A FIRE RATED BARRIER AROUND THE PLATFORM LIFT, PLEASE ENSURE THAT NO MECHANICAL FIXINGS (I.E.) SCREWS ARE USED INTO ANY PART OF OUR STRUCTURE.

NOTE
IF A 50MM PIT IS NOT FEASIBLE THEN A RAMP CAN BE PROVIDED - DETAILS UPON REQUEST

DIMENSIONS IN MM

SCALE
NTS

GENERAL NOTES

- 1) A 50MM DEEP PIT IS REQUIRED ON SITE FOR THE LIFT TO SIT INTO TO GIVE LEVEL ACCESS AT THE LOWER FLOOR (50MM PIT +6MM/-0MM). IF A PIT IS NOT POSSIBLE THEN THE LIFT MAY SIT ON THE FLOOR AND A RAMP CAN BE PROVIDED.
- 2) WHEN REQUIRED IT MAY BE NECESSARY FOR THE BUILDER TO PROVIDE SUPPORT FOR THE LIFT ON SIDE D.
- 3) THE SUPPORT WALL MUST BE PLUMB TO ± 5 MM. THE RELATIONSHIP BETWEEN THE LIFT BASE AND THE WALL / FIXING LOCATION IS TO BE PLUMB AND SQUARE $-0/+10$ MM.
- 4) THE FLOOR TO CEILING HEIGHT REQUIRED IS A MINIMUM OF 2250 (WITH PIT - 2300 NO PIT).
- 5) THE STANDARD COLOUR OF THE PLATFORM LIFT SHAFT PANELS IS WHITE RAL 9016 FINISH. OTHER COLOURS ARE AVAILABLE ON REQUEST.
- 6) THE LIFT IS RATED AT 400KG AS STANDARD. 500KG IS ALSO AVAILABLE.
- 7) OTHER LIFT SIZES ARE AVAILABLE. PLEASE CONTACT THE OFFICE FOR OTHER OPTIONS.
- 8) BATTERY EMERGENCY LOWERING IS NOW A STANDARD OPTION FROM THE PLATFORM

ELECTRICS

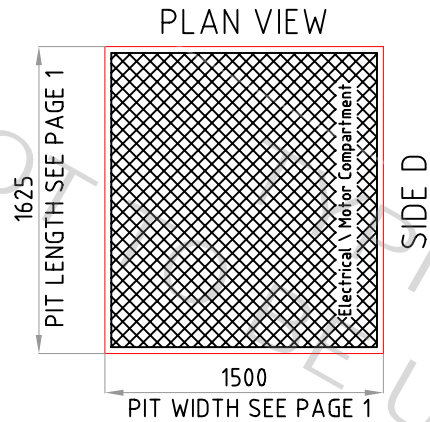
SINGLE POWER SUPPLY


1) A PERMANENT 240V 1 PHASE 20 AMP SUPPLY TERMINATING IN A FUSED AND **LOCKABLE ISOLATOR** IS TO BE POSITIONED EXTERNALLY OF THE LIFT ENCLOSURE AND IS TO BE SUPPLIED AND FITTED BY OTHERS WITHIN 500MM OF THE ELECTRICAL COMPARTMENT. IF A TEMPORARY SUPPLY IS PROVIDED AT THE START OF THE INSTALLATION, THIS WOULD STILL NEED TO TERMINATE IN A PERMANENT LOCKABLE ISOLATOR AS NOTED ABOVE. STARTING CURRENT = 14 AMPS
RUNNING CURRENT = 8 AMPS

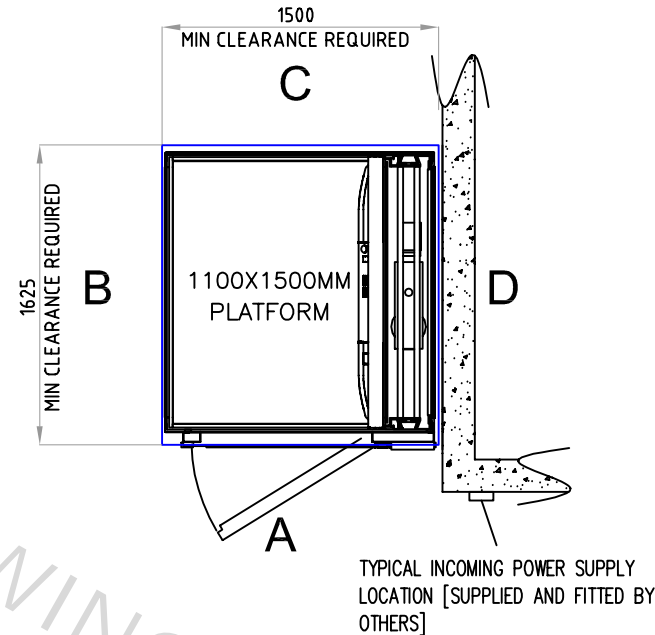
OTHER ELECTRICAL INFORMATION
FIRE DRIVE REQUIREMENTS. STANDARD FEATURE
BT LINE OR SIMILAR ANALOGUE DEDICATED LINE
INTER-COM OPTION
GSM LINE OPTION

A5000 LOADINGS

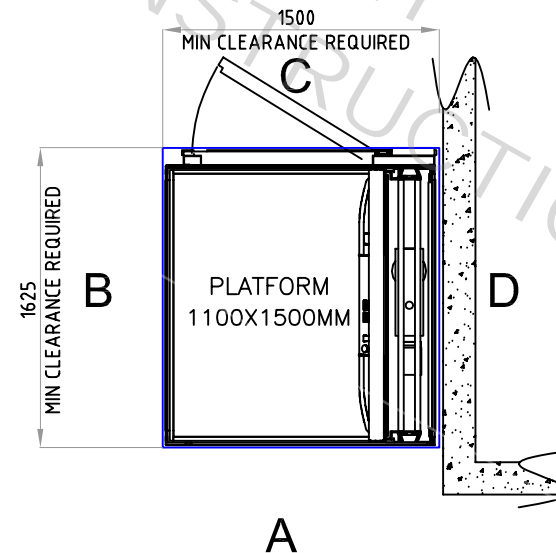
SECTION A-A



 FLOOR LOADING IN THIS AREA:
8.3 KN/M² CONTAINED WITHIN SHADED AREA



SECTION B-B



DIMENSIONS IN MM

SCALE
NTS

DWG No.	A503FD	ISSUE: A	PAGE: 2 of 2
------------	---------------	--------------------	------------------------



CIBES LIFT UK LTD	
HEAD OFFICE	
CHAPEL HOUSE LEICESTER ROAD, LOUGHBOROUGH LE11 2AF TELEPHONE: 01509 436 022	
CENTRE OF EXCELLENCE	
TS 2 & 3 ENTERPRISE HOUSE, THOMLINSON ROAD, HARTLEPOOL, TS25 1NS TELEPHONE: 01429 426222	

GENERAL NOTES

- 1) A 50MM DEEP PIT IS REQUIRED ON SITE FOR THE LIFT TO SIT INTO TO GIVE LEVEL ACCESS AT THE LOWER FLOOR (50MM PIT +6MM/-0MM). IF A PIT IS NOT POSSIBLE THEN THE LIFT MAY SIT ON THE FLOOR AND A RAMP CAN BE PROVIDED.
- 2) WHEN REQUIRED IT MAY BE NECESSARY FOR THE BUILDER TO PROVIDE SUPPORT FOR THE LIFT ON SIDE D.
- 3) THE SUPPORT WALL SHOULD BE PLUMB TO $\pm 5\text{MM}$. THE RELATIONSHIP BETWEEN THE LIFT BASE AND THE WALL / FLOOR LOCATION IS TO BE PLUMB AND SQUARE $-0/+10\text{MM}$.
- 4) THE FLOOR TO CEILING HEIGHT REQUIRED IS A MINIMUM OF 2250 (WITH PIT - 2300 NO PIT).
- 5) THE STANDARD COLOUR OF THE PLATFORM LIFT SHAFT PANELS IS WHITE RAL 9016 FINISH. OTHER COLOURS ARE AVAILABLE ON REQUEST.
- 6) THE LIFT IS RATED AT 400KG AS STANDARD. 500KG IS ALSO AVAILABLE.
- 7) OTHER LIFT SIZES ARE AVAILABLE. PLEASE CONTACT THE OFFICE FOR OTHER OPTIONS.
- 8) BATTERY EMERGENCY LOWERING IS NOW A STANDARD OPTION FROM THE PLATFORM

ELECTRICS

SINGLE POWER SUPPLY

1) A PERMANENT 240V 1 PHASE 20 AMP SUPPLY TERMINATING IN A FUSED AND **LOCKABLE ISOLATOR** IS TO BE POSITIONED EXTERNALLY OF THE LIFT ENCLOSURE AND IS TO BE SUPPLIED AND FITTED BY OTHERS WITHIN 500MM OF THE ELECTRICAL COMPARTMENT. IF A TEMPORARY SUPPLY IS PROVIDED AT THE START OF THE INSTALLATION, THIS WOULD STILL NEED TO TERMINATE IN A PERMANENT LOCKABLE ISOLATOR AS NOTED ABOVE. STARTING CURRENT = 14 AMPS
RUNNING CURRENT = 8 AMPS

OTHER ELECTRICAL INFORMATION

OTHER ELECTRICAL INFORMATION
FIRE DRIVE REQUIREMENTS. STANDARD FEATURE
BT LINE OR SIMILAR ANALOGUE DEDICATED LINE
INTER-COM OPTION
GSM LINE OPTION

A5000

DO NOT SCALE - IF IN DOUBT ASK

A	30/03/2017	INITIAL DRAWING	DRAWN BY:	CT
ISSUE	DATE	DESCRIPTION	CHECKED BY:	CD

ISSUE	DATE	DESCRIPTION	CHECKED BY:	CD
DRAWING TITLE: A5000 THROUGH ENTRY [FIRE DOORS]				

DWG No.	A503FD	ISSUE: A	PAGE: 2 of 2
------------	---------------	--------------------	------------------------