

ALTERNATIVE PLATFORM SIZES

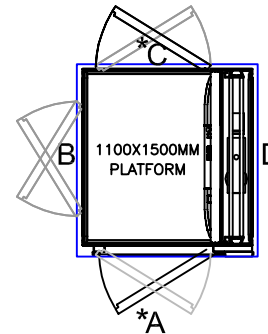
PLATFORM SIZE	FOOTPRINT
1000 x 1500mm	1400 x 1625mm
1100 x 1500mm	1500 x 1625mm
1100 x 1600mm	1500 x 1715mm
[w x d,mm]	[w x d,mm]

	*
--	---

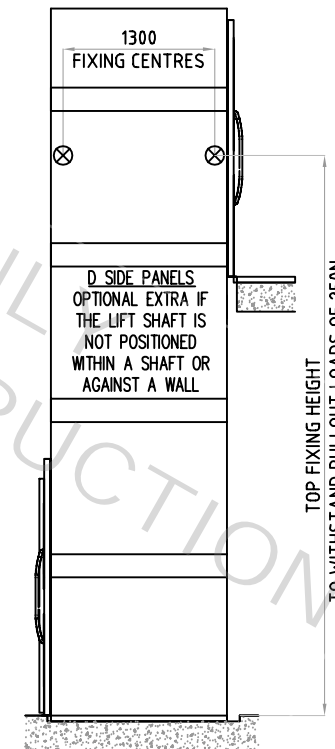
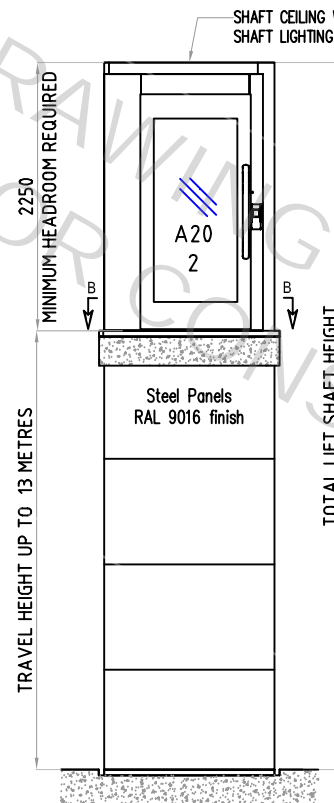
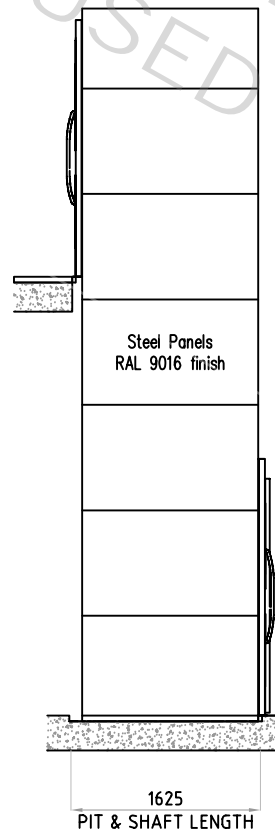
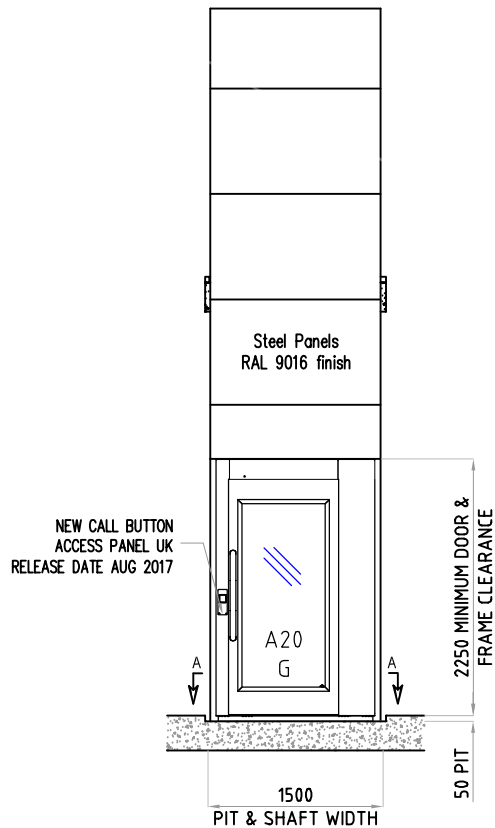
*
SIZE SHOWN ON THIS
DRAWING

A5000 | 2 STOP | THROUGH ENTRY

ALTERNATIVE DOOR HANDINGS



*
POSITION SHOWN
ON THIS DRAWING



NOTE
IF A 50MM PIT IS NOT FEASIBLE THEN A RAMP
CAN BE PROVIDED - DETAILS UPON REQUEST

DIMENSIONS IN MM

SCALE
NTS



CIBES LIFT UK LTD

HEAD OFFICE
CHAPEL HOUSE
LEICESTER ROAD, LOUGHBOROUGH
LE11 2AF
TELEPHONE: 01509 436 022

CENTRE OF EXCELLENCE
2 & 3 ENTERPRISE HOUSE, THOMLINSON
ROAD, HARTLEPOOL,
TS25 1NS
TELEPHONE: 01429 426222

GENERAL NOTES

1) A 50MM DEEP PIT IS REQUIRED ON SITE FOR THE LIFT TO SIT INTO TO GIVE LEVEL ACCESS AT THE LOWER FLOOR (50MM PIT +6MM/-0MM). IF A PIT IS NOT POSSIBLE THEN THE LIFT MAY SIT ON THE FLOOR AND A RAMP CAN BE PROVIDED.

2) WHEN REQUIRED IT MAY BE NECESSARY FOR THE BUILDER TO PROVIDE SUPPORT FOR THE LIFT ON SIDE D.

3) THE SUPPORT WALL MUST BE PLUMB TO $\pm 5\text{MM}$. THE RELATIONSHIP BETWEEN THE LIFT BASE AND THE WALL / FIXING LOCATION IS TO BE PLUMB AND SQUARE $-0/+10\text{MM}$.

4) THE FLOOR TO CEILING HEIGHT REQUIRED IS A MINIMUM OF 2250 (WITH PIT - 2300 NO PIT).

5) THE STANDARD COLOUR OF THE PLATFORM LIFT SHAFT PANELS IS WHITE RAL 9016 FINISH. OTHER COLOURS ARE AVAILABLE ON REQUEST.

6) THE LIFT IS RATED AT 400KG AS STANDARD. 500KG IS ALSO AVAILABLE.

7) OTHER LIFT SIZES ARE AVAILABLE. PLEASE CONTACT THE OFFICE FOR OTHER OPTIONS.

8) BATTERY EMERGENCY LOWERING IS NOW A STANDARD OPTION FROM THE PLATFORM

ELECTRICS

SINGLE POWER SUPPLY

1) A PERMANENT 240V 1 PHASE 20 AMP SUPPLY TERMINATING IN A FUSED AND **LOCKABLE ISOLATOR** IS TO BE POSITIONED EXTERNALLY OF THE LIFT ENCLOSURE AND IS TO BE SUPPLIED AND FITTED BY OTHERS WITHIN 500MM OF THE ELECTRICAL COMPARTMENT. IF A TEMPORARY SUPPLY IS PROVIDED AT THE START OF THE INSTALLATION, THIS WOULD STILL NEED TO TERMINATE IN A PERMANENT LOCKABLE ISOLATOR AS NOTED ABOVE.
STARTING CURRENT = 14 AMPS
RUNNING CURRENT = 8 AMPS

OTHER ELECTRICAL INFORMATION

OTHER ELECTRICAL INFORMATION
FIRE DRIVE REQUIREMENTS. STANDARD FEATURE
BT LINE OR SIMILAR ANALOGUE DEDICATED LINE
INTER-COM OPTION
GSM LINE OPTION

A5000

DO NOT SCALE - IF IN DOUBT ASK

A	30/03/2017	INITIAL DRAWING	DRAWN BY:	CT
ISSUE	DATE	DESCRIPTION	CHECKED BY:	CD

DRAWING TITLE: **A5000 THROUGH ENTRY**

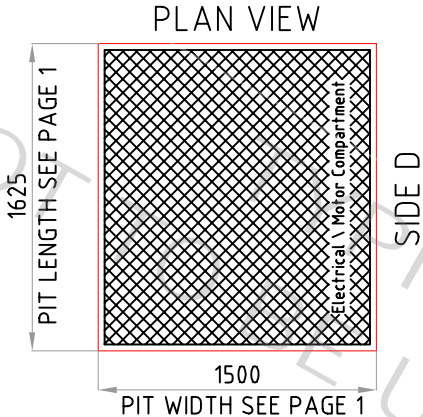
DWG No.	A503	ISSUE: A	PAGE: 1 of 2
------------	-------------	--------------------	------------------------

A5000 LOADINGS

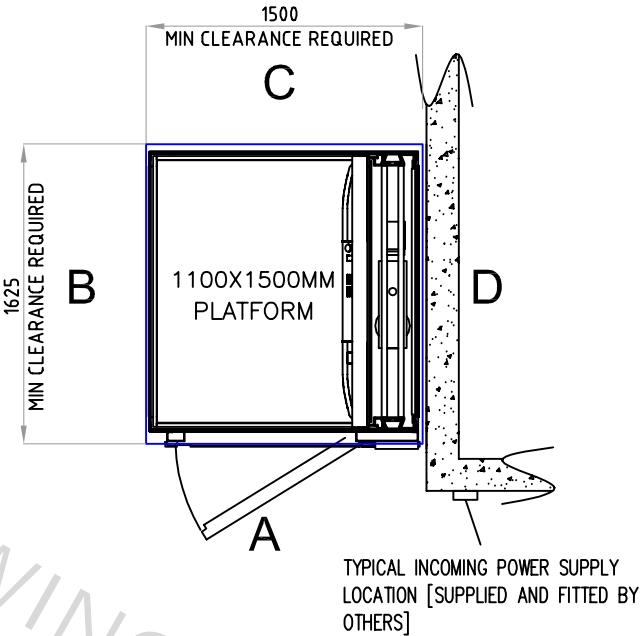
SECTION A-A



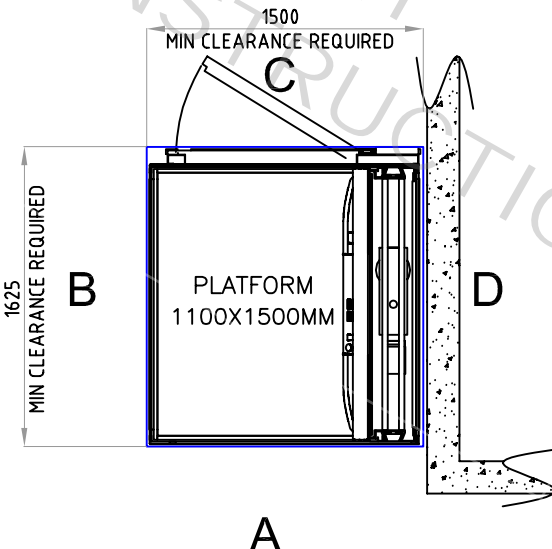
CIBES LIFT UK LTD
HEAD OFFICE
CHAPEL HOUSE
LEICESTER ROAD, LOUGHBOROUGH
LE11 2AF
TELEPHONE: 01509 436 022
CENTRE OF EXCELLENCE
UNITS 2 & 3 ENTERPRISE HOUSE, THOMLINSON
ROAD, HARTLEPOOL,
TS22 1NS
TELEPHONE: 01429 426222



FLOOR LOADING IN THIS AREA:
8.3 KN/M² CONTAINED WITHIN SHADED AREA



SECTION B-B



GENERAL NOTES

1) A 50MM DEEP PIT IS REQUIRED ON SITE FOR THE LIFT TO SIT INTO TO GIVE LEVEL ACCESS AT THE LOWER FLOOR (50MM PIT +6MM-0MM). IF A PIT IS NOT POSSIBLE THEN THE LIFT MAY SIT ON THE FLOOR AND A RAMP CAN BE PROVIDED.

2) WHEN REQUIRED IT MAY BE NECESSARY FOR THE BUILDER TO PROVIDE SUPPORT FOR THE LIFT ON SIDE D.

3) THE SUPPORT WALL MUST BE PLUMB TO ±5MM. THE RELATIONSHIP BETWEEN THE LIFT BASE AND THE WALL / FIXING LOCATION IS TO BE PLUMB AND SQUARE -0/+10MM.

4) THE FLOOR TO CEILING HEIGHT REQUIRED IS A MINIMUM OF 2250 (WITH PIT - 2300 NO PIT).

5) THE STANDARD COLOUR OF THE PLATFORM LIFT SHAFT PANELS IS WHITE RAL 9016 FINISH. OTHER COLOURS ARE AVAILABLE ON REQUEST.

6) THE LIFT IS RATED AT 400KG AS STANDARD. 500KG IS ALSO AVAILABLE.

7) OTHER LIFT SIZES ARE AVAILABLE. PLEASE CONTACT THE OFFICE FOR OTHER OPTIONS.

8) BATTERY EMERGENCY LOWERING IS NOW A STANDARD OPTION FROM THE PLATFORM

ELECTRICS

SINGLE POWER SUPPLY

1) A PERMANENT 240V 1 PHASE 20 AMP SUPPLY TERMINATING IN A FUSED AND **LOCKABLE ISOLATOR** IS TO BE POSITIONED EXTERNALLY OF THE LIFT ENCLOSURE AND IS TO BE SUPPLIED AND FITTED BY OTHERS WITHIN 500MM OF THE ELECTRICAL COMPARTMENT. IF A TEMPORARY SUPPLY IS PROVIDED AT THE START OF THE INSTALLATION, THIS WOULD STILL NEED TO TERMINATE IN A PERMANENT LOCKABLE ISOLATOR AS NOTED ABOVE. STARTING CURRENT = 14 AMPS RUNNING CURRENT = 8 AMPS

OTHER ELECTRICAL INFORMATION

FIRE DRIVE REQUIREMENTS, STANDARD FEATURE
BT LINE OR SIMILAR ANALOGUE DEDICATED LINE
INTER-COM OPTION
GSM LINE OPTION

A5000

DO NOT SCALE - IF IN DOUBT ASK				
A		INITIAL DRAWING	DRAWN BY:	CT
ISSUE	DATE	DESCRIPTION	CHECKED BY:	CD
DRAWING TITLE: A5000 THROUGH ENTRY				
DWG No.	A503	ISSUE:	A	PAGE: 2 of 2

DIMENSIONS IN MM

SCALE
NTS