

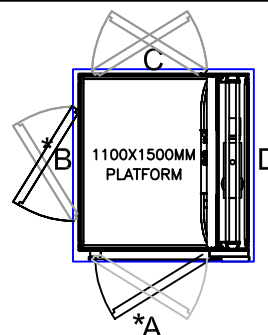
## ALTERNATIVE PLATFORM SIZES

PLATFORM SIZE	FOOTPRINT
1000 x 1500mm	1400 x 1625mm
1100 x 1500mm	1500 x 1625mm
1100 x 1600mm	1500 x 1715mm
[w x d,mm]	[w x d,mm]

\* SIZE SHOWN ON THIS DRAWING

## A5000 | 2 STOP | ADJACENT ENTRY

## ALTERNATIVE DOOR HANDINGS



\* POSITION SHOWN ON THIS DRAWING



<b>CIBES LIFT UK LTD</b>
HEAD OFFICE CHAPEL HOUSE LEICESTER ROAD, LOUGHBOROUGH LE11 2AF TELEPHONE: 01509 436 022
<b>CENTRE OF EXCELLENCE</b> UNITS 2 & 3 ENTERPRISE HOUSE, THOMLINSON ROAD, HARTLEPOOL, TS25 1NS TELEPHONE: 01429 426222

### GENERAL NOTES

- 1) A 50MM DEEP PIT IS REQUIRED ON SITE FOR THE LIFT TO SIT INTO TO GIVE LEVEL ACCESS AT THE LOWER FLOOR (50MM PIT + 6MM-0MM). IF A PIT IS NOT POSSIBLE THEN THE LIFT MAY SIT ON THE FLOOR AND A RAMP CAN BE PROVIDED.
- 2) WHEN REQUIRED IT MAY BE NECESSARY FOR THE BUILDER TO PROVIDE SUPPORT FOR THE LIFT ON SIDE D.
- 3) THE SUPPORT WALL MUST BE PLUMB TO  $\pm 5$ MM. THE RELATIONSHIP BETWEEN THE LIFT BASE AND THE WALL / FIXING LOCATION IS TO BE PLUMB AND SQUARE -0/+10MM.
- 4) THE FLOOR TO CEILING HEIGHT REQUIRED IS A MINIMUM OF 2250 (WITH PIT - 2300 NO PIT).
- 5) THE STANDARD COLOUR OF THE PLATFORM LIFT SHAFT PANELS IS WHITE RAL 9016 FINISH. OTHER COLOURS ARE AVAILABLE ON REQUEST.
- 6) THE LIFT IS RATED AT 400KG AS STANDARD. 500KG IS ALSO AVAILABLE.
- 7) OTHER LIFT SIZES ARE AVAILABLE. PLEASE CONTACT THE OFFICE FOR OTHER OPTIONS.
- 8) BATTERY EMERGENCY LOWERING IS NOW A STANDARD OPTION FROM THE PLATFORM

### ELECTRICS

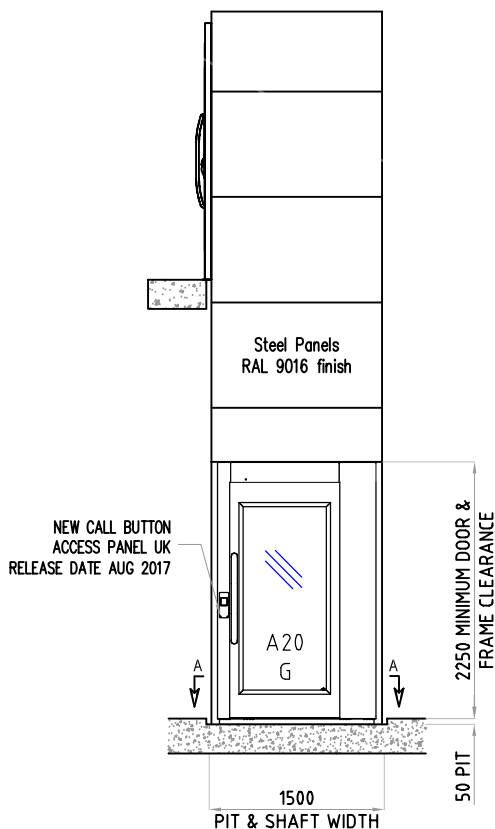
#### SINGLE POWER SUPPLY

1) A PERMANENT 240V 1 PHASE 20 AMP SUPPLY TERMINATING IN A FUSED AND **LOCKABLE ISOLATOR** IS TO BE POSITIONED EXTERNALLY OF THE LIFT ENCLOSURE AND IS TO BE SUPPLIED AND FITTED BY OTHERS WITHIN 500MM OF THE ELECTRICAL COMPARTMENT. IF A TEMPORARY SUPPLY IS PROVIDED AT THE START OF THE INSTALLATION, THIS WOULD STILL NEED TO TERMINATE IN A PERMANENT LOCKABLE ISOLATOR AS NOTED ABOVE. STARTING CURRENT = 14 AMPS  
RUNNING CURRENT = 8 AMPS

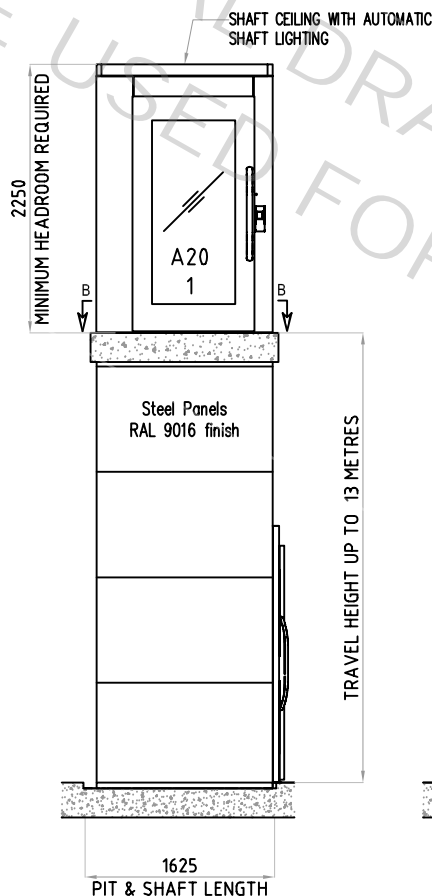
#### OTHER ELECTRICAL INFORMATION

FIRE DRIVE REQUIREMENTS. STANDARD FEATURE  
BT LINE OR SIMILAR ANALOGUE DEDICATED LINE  
INTER-COM OPTION  
GSM LINE OPTION

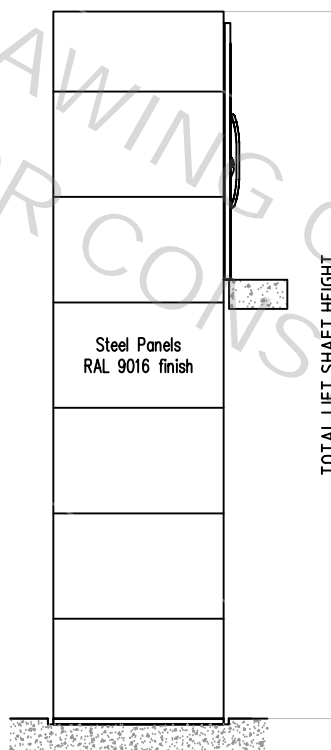
ELEVATION A



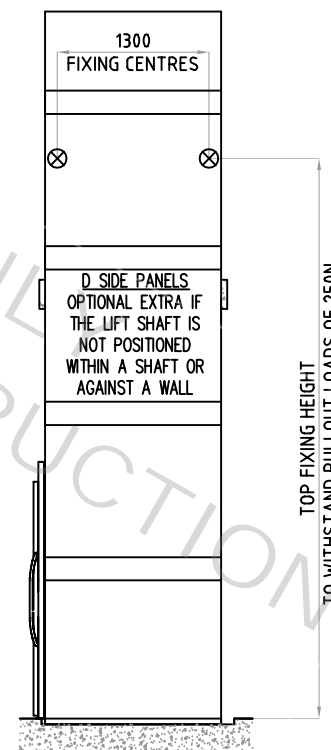
ELEVATION B



ELEVATION C



ELEVATION D



# A5000

DO NOT SCALE - IF IN DOUBT ASK

NOTE  
IF A 50MM PIT IS NOT FEASIBLE THEN A RAMP  
CAN BE PROVIDED - DETAILS UPON REQUEST

DIMENSIONS IN MM

SCALE  
NTS

DWG  
No.

A502

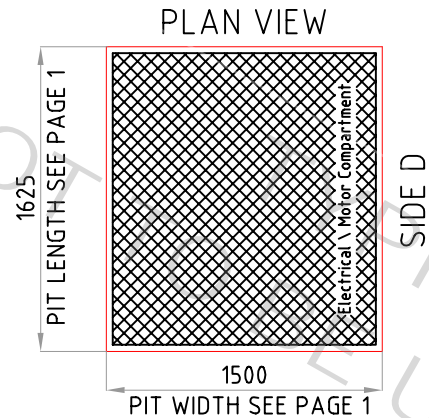
ISSUE:  
A

PAGE:  
1 of 2

A	30/03/2017	INITIAL DRAWING	DRAWN BY:	CT
ISSUE	DATE	DESCRIPTION	CHECKED BY:	CD

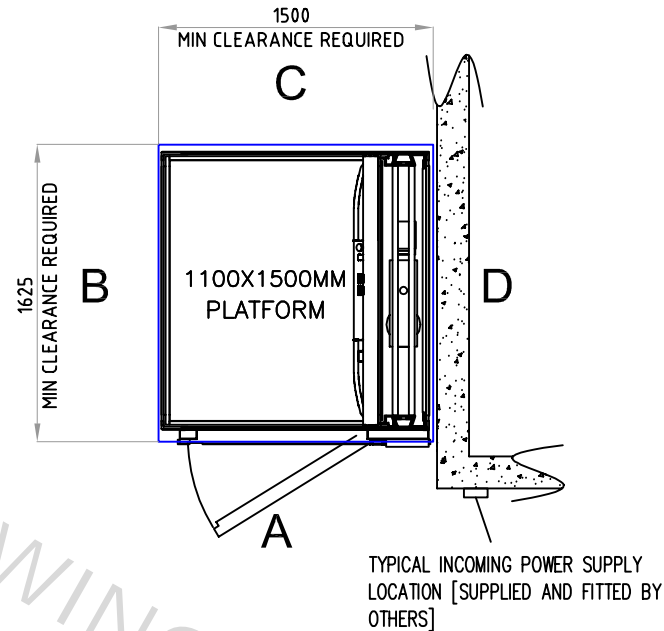
DRAWING TITLE: **A5000 ADJACENT ENTRY**

# A5000 LOADINGS

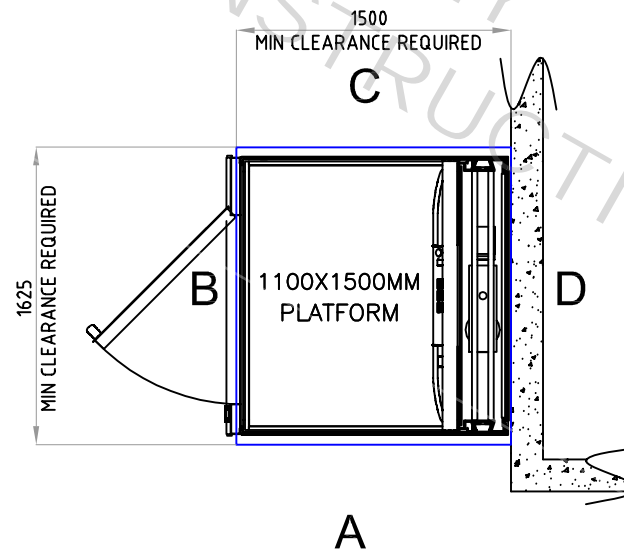


FLOOR LOADING IN THIS AREA:  
8.3 KN/M<sup>2</sup> CONTAINED WITHIN SHADED AREA

## SECTION A-A



## SECTION B-B



**CIBES LIFT UK LTD**  
**HEAD OFFICE**  
CHAPEL HOUSE  
LEICESTER ROAD, LOUGHBOROUGH  
LE11 2AF  
TELEPHONE: 01509 436 022  
**CENTRE OF EXCELLENCE**  
UNITS 2 & 3 ENTERPRISE HOUSE, THOMLINSON  
ROAD, HARTLEPOOL,  
TS25 1NS  
TELEPHONE: 01429 426222

### GENERAL NOTES

- 1) A 50MM DEEP PIT IS REQUIRED ON SITE FOR THE LIFT TO SIT INTO TO GIVE LEVEL ACCESS AT THE LOWER FLOOR (50MM PIT +6MM/-0MM). IF A PIT IS NOT POSSIBLE THEN THE LIFT MAY SIT ON THE FLOOR AND A RAMP CAN BE PROVIDED.
- 2) WHEN REQUIRED IT MAY BE NECESSARY FOR THE BUILDER TO PROVIDE SUPPORT FOR THE LIFT ON SIDE D.
- 3) THE SUPPORT WALL MUST BE PLUMB TO ±5MM. THE RELATIONSHIP BETWEEN THE LIFT BASE AND THE WALL / FIXING LOCATION IS TO BE PLUMB AND SQUARE -0/+10MM.
- 4) THE FLOOR TO CEILING HEIGHT REQUIRED IS A MINIMUM OF 2250 (WITH PIT - 2300 NO PIT).
- 5) THE STANDARD COLOUR OF THE PLATFORM LIFT SHAFT PANELS IS WHITE RAL 9016 FINISH. OTHER COLOURS ARE AVAILABLE ON REQUEST.
- 6) THE LIFT IS RATED AT 400KG AS STANDARD. 500KG IS ALSO AVAILABLE.
- 7) OTHER LIFT SIZES ARE AVAILABLE. PLEASE CONTACT THE OFFICE FOR OTHER OPTIONS.
- 8) BATTERY EMERGENCY LOWERING IS NOW A STANDARD OPTION FROM THE PLATFORM

### ELECTRICS

#### SINGLE POWER SUPPLY

- 1) A PERMANENT 240V 1 PHASE 20 AMP SUPPLY TERMINATING IN A FUSED AND **LOCKABLE ISOLATOR** IS TO BE POSITIONED EXTERNALLY OF THE LIFT ENCLOSURE AND IS TO BE SUPPLIED AND FITTED BY OTHERS WITHIN 500MM OF THE ELECTRICAL COMPARTMENT. IF A TEMPORARY SUPPLY IS PROVIDED AT THE START OF THE INSTALLATION, THIS WOULD STILL NEED TO TERMINATE IN A PERMANENT LOCKABLE ISOLATOR AS NOTED ABOVE. STARTING CURRENT = 14 AMPS RUNNING CURRENT = 8 AMPS

**OTHER ELECTRICAL INFORMATION**  
FIRE DRIVE REQUIREMENTS, STANDARD FEATURE  
BT LINE OR SIMILAR ANALOGUE DEDICATED LINE  
INTER-COM OPTION  
GSM LINE OPTION

# A5000

DO NOT SCALE - IF IN DOUBT ASK

A	30/03/2017	INITIAL DRAWING	DRAWN BY:	CT
ISSUE	DATE	DESCRIPTION	CHECKED BY:	CD

DRAWING TITLE: **A5000 ADJACENT ENTRY**

DWG No.	<b>A502</b>	ISSUE:	<b>A</b>	PAGE:	<b>2 of 2</b>
---------	-------------	--------	----------	-------	---------------

DIMENSIONS IN MM

SCALE  
NTS