



**Walkways**

Type O5 - 150/53+15mm HSS420 (Galvanised)



**Walkways**

Type O5 - 150/53+15mm HSS420 (Galvanised)





### **Walkways**

Type O5 - 150/53+15mm HSS420 (Galvanised)



### **Walkways**

Type O5 - 150/53+15mm HSS420 (Galvanised)





### **Stair Treads/Landings**

Type O5-M - Treads 2500x325mm including Cranked Rear Riser (Galvanised with Polyester Powder Coated Nosing)



### **Stair Treads/Landings**

Type O5-M - Treads 2500x325mm including Cranked Rear Riser (Galvanised with Polyester Powder Coated Nosing)



### **Stair Treads/Landings**

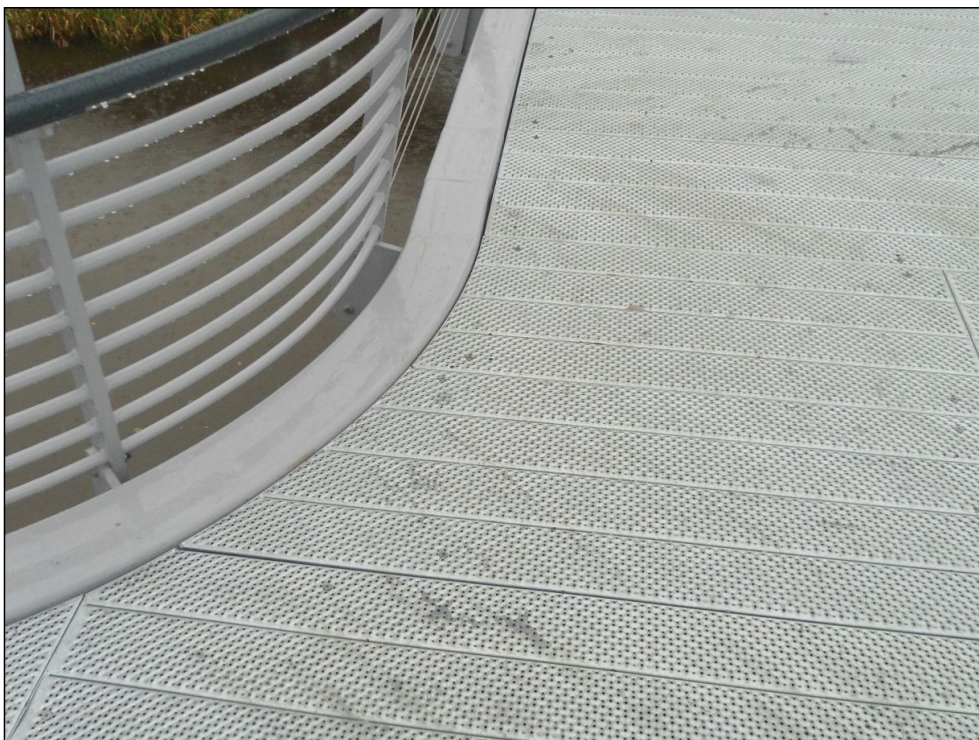
Type O5-M - Treads 2500x325mm including Cranked Rear Riser (Galvanised with Polyester Powder Coated Nosing)



### **Walkways**

Type O5 - 150/53+15mm HSS420 (Galvanised)





### **Walkways**

Type O5 - 150/53+15mm HSS420 (Galvanised)