



## Over fascia vent

Durable, multi-purpose ventilator in a range of colours

### Use

- For roof eaves ventilation
- For flat roof abutment ventilation
- On roofs where the eaves incorporate a fascia board
- On roofs which do not incorporate a soffit board, or where an unbroken soffit board is required

### Features and benefits

- Very unobtrusive and easy to fit
- Superior strength construction - will carry the weight of the bottom row of tiles
- 4mm wide slots comply with BS 5250 : 2011
- Durable and totally resistant to decay
- UV stabilised and colourfast

### Quality

- Satisfies all NHBC requirements
- Manufactured to BS EN ISO 9001 and BS EN ISO 14001
- Complies with all relevant Building Regulations
- Meets all relevant British Standards

### Material and colour choice

- Manufactured by injection moulding in high density polypropylene
- Available in white, black or brown

### Products in the system

#### Over fascia vent - Product 3011

- Provides ventilation equivalent to a continuous 10mm opening (10,000mm<sup>2</sup> per metre run).

#### Over fascia vent - Product 3011-25

- Provides ventilation equivalent to a continuous 25mm opening (25,000mm<sup>2</sup> per metre run).

Both products are supplied in 300mm lengths.

### Installation advice

- Use product 3011 to ventilate pitched roofs, where the pitch of the roof is 15 degrees or more, and the roof void is attic or loft space
- Use product 3011-25 to ventilate pitched roofs, where the pitch of the roof is less than 15 degrees, flat roofs or any roof where living accommodation is contained within the roof space
- Make sure each ventilator is fixed securely into the top of the fascia board using at least three screws or nails per ventilator
- On pitched roofs it is advisable to provide a felt support above the fascia ventilator, projecting at least 10mm beyond the front of the ventilator. This will prevent the felt from sagging behind the fascia board and will maintain a clear air path at the front
- When ventilating flat roof abutments with product 3011-25 some extra joinery work is essential - please consult Timloc Technical Department
- Ventilation must be provided for the full length of the eaves and along both sides of the building to create a cross flow ventilation action



### How to order

- Determine whether the roof design requires ventilation equivalent to a continuous 10mm opening (3011), or 25mm opening (3011-25)
- Specify which colour is preferred
- Measure the overall length of the eaves to be ventilated and divide by 300mm to determine the number of lengths required

### Bill of quantity

#### Over fascia ventilator 300mm (25mm airflow)

G20 Carpentry/Timber Framing/First Fixing  
Clause

#### 910^ EAVES SOFFIT VENTILATION

- Manufacturer: Timloc Building Products, Timloc House, Ozone Park, Howden, East Yorkshire, DN14 7SD. T: 01405 765567 W: www.timloc.co.uk
- Product Reference: 3011
- Type: Over Fascia Ventilator (300mm) 10mm Airflow
- Colour: ..... (Black, White, Brown)
- Airway: Provide the equivalent of a continuous opening of not less than 10mm for the full length of eaves.

#### Over fascia ventilator 300mm (25mm airflow)

G20 Carpentry/Timber Framing/First Fixing  
Clause

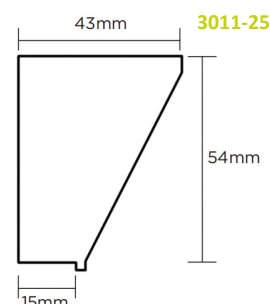
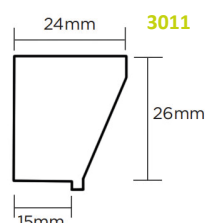
#### 910^ EAVES SOFFIT VENTILATION

- Manufacturer: Timloc Building Products, Timloc House, Ozone Park, Howden, East Yorkshire, DN14 7SD. T: 01405 765567 W: www.timloc.co.uk
- Product Reference: 3011-25
- Type: Over Fascia Ventilator (300mm) 25mm Airflow
- Colour: ..... (Black, White)
- Airway: Provide the equivalent of a continuous opening of not less than 25mm for the full length of eaves.

### Product codes

#### Over fascia vent

Free airflow	Length	Colour	Product code
10,000mm <sup>2</sup> per meter	300mm	Black	3011BL
10,000mm <sup>2</sup> per meter	300mm	Brown	3011BR
10,000mm <sup>2</sup> per meter	300mm	White	3011WH
25,000mm <sup>2</sup> per meter	300mm	Black	3011/25BL
25,000mm <sup>2</sup> per meter	300mm	White	3011/25W



Timloc Building Products, Timloc House, Ozone Park, Howden, East Yorkshire, DN14 7SD  
T: 01405 765 567 E: sales@timloc.co.uk W: www.timloc.co.uk Technical | E: technical@timloc.co.uk