

THERMO-LOC FRSTOP

Boxed in smaller
quantities for
convenience

Fire-rated cavity stop sock

Fire-rated thermal and acoustic cavity stop sock

Use

- To restrict the spread of flames within external masonry
- To further minimise the effect of flanking noise pollution at wall junctions

Features and benefits

- FRstop cavity stop socks are lengths of low resin, non-combustible, rockfibre mineral wool sleeved in 35 micron polythene for on-site weather protection
- 1 hour fire integrity and minimum 15 minute insulation
- Polythene encapsulated cavity stop sock
- Available in standard widths of 50, 75, 85, 90, 100, 115, 125 and 150mm
- Special cavity widths are available on request up to 300mm
- Meets the requirements of the Robust Detail, Approved Document B and NHBC Standards
- Boxed in smaller quantities for convenience

Quality

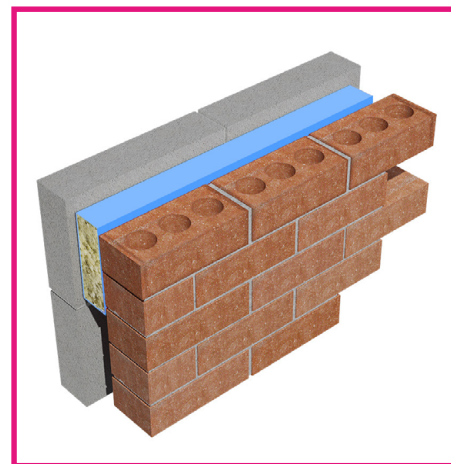
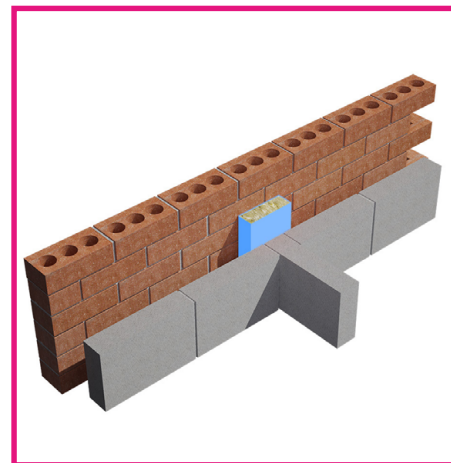
- Satisfies all NHBC requirements
- Complies with all relevant Building Regulations
- Meets all relevant British Standards
- LABC registered detail
- Independently tested to BS EN 1366-4:2006 +A1:2010

Material and colour choice

- Manufactured using Rockfibre mineral wool
- Rockfibre uses no CFC's, HCFC's in the manufacturing process
- Thermal conductivity of Rockfibre insulation 0.037w/mK

Installation advice

- FRstop is designed to friction fit within the cavity and is easily installed both vertically and horizontally into the cavity during construction. Care should be taken to ensure butt joints are closely fitted and the cavity sock fully fills the cavity.
- This method should be incorporated with a preformed horizontal cavity tray (refer to Technical Department for appropriate type) and proprietary wall weep vents (Timloc product code 1143) at 900mm centres to prevent water ingress from bridging the cavity.



How to order

- To calculate quantities divide the overall length of the required cavity wall run by 1.2m, allow an additional unit for each corner for cutting. Always round up to the next whole number
- Determine and stipulate the cavity width that FRstop needs to suit

Bill of quantity

F30 Accessories/sundry items for brick/block/stone walling
Clause

370 PREFORMED CAVITY TRAY / ACCESSORIES

- Manufacturer: Timloc Building Products, Timloc House, Ozone Park, Howden, East Yorks. DN14 7SD. T: 01405 765 567 W: www.timloc.co.uk
- Types(s) and location(s): FRstop - thermal and acoustic fire stops to be installed vertically and horizontally as work proceeds. Position where a party wall meets the cavity wall or at floor levels, supplied in 1.2m lengths and butt jointed.
- Reference: FRstop

Product codes

FRstop cavity stop sock

Product code	To suit cavity width	Dimensions	Fire integrity	Pack quantity	Lead time
FRSTOP50	50mm	65 x 65 x 1200mm	1 hour	20	Next working day
FRSTOP75	75mm	85 x 85 x 1200mm	1 hour	14	Next working day
FRSTOP85	85mm	100 x 85 x 1200mm	1 hour	12	Next working day
FRSTOP90	90mm	100 x 85 x 1200mm	1 hour	12	Next working day
FRSTOP100	100mm	110 x 100 x 1200mm	1 hour	10	Next working day
FRSTOP115	115mm	130 x 100 x 1200mm	1 hour	10	Next working day
FRSTOP125	125mm	140 x 100 x 1200mm	1 hour	8	Next working day
FRSTOP150	150mm	160 x 120 x 1200mm	1 hour	6	Next working day
FRSTOP160	160mm	170 x 120 x 1200mm	1 hour	5	3 - 5 working days
FRSTOP170	170mm	180 x 120 x 1200mm	1 hour	5	3 - 5 working days
FRSTOP180	180mm	190 x 120 x 1200mm	1 hour	5	3 - 5 working days
FRSTOP190	190mm	200 x 120 x 1200mm	1 hour	5	3 - 5 working days
FRSTOP200	200mm	210 x 150 x 1200mm	1 hour	3	3 - 5 working days
FRSTOP210	210mm	220 x 150 x 1200mm	1 hour	3	3 - 5 working days
FRSTOP220	220mm	230 x 150 x 1200mm	1 hour	3	3 - 5 working days
FRSTOP230	230mm	240 x 150 x 1200mm	1 hour	3	3 - 5 working days
FRSTOP240	240mm	250 x 150 x 1200mm	1 hour	3	3 - 5 working days
FRSTOP250	250mm	260 x 150 x 1200mm	1 hour	2	3 - 5 working days
FRSTOP260	260mm	270 x 150 x 1200mm	1 hour	1	3 - 5 working days
FRSTOP270	270mm	280 x 150 x 1200mm	1 hour	1	3 - 5 working days
FRSTOP280	280mm	290 x 150 x 1200mm	1 hour	1	3 - 5 working days
FRSTOP290	290mm	300 x 150 x 1200mm	1 hour	1	3 - 5 working days
FRSTOP300	300mm	320 x 150 x 1200mm	1 hour	1	3 - 5 working days