



Cavity trays



**Cavity closers
and stops**



**Gas barrier and
damp proofing
accessories**



**Loft access
doors**



Access panels



**Roofline
and above**



**Under floor and
through wall
ventilation**



**Air leakage
solutions**

When they're done properly the
most important jobs go unnoticed.

Call: 01405 765567 | Email: sales@timloc.co.uk

www.timloc.co.uk



Next working day delivery available on many products



When they're done properly, the most important jobs go unnoticed.

Timloc have been producing high performance building products for over 40 years.

We've gained a wealth of experience, that few if any can rival, in designing and manufacturing an extensive range of building product solutions from the groundwork - right up to the roof ridge.

Today, Timloc is trusted by installers, buyers and specifiers nationwide, who benefit from not only our cost effective and quality products, but also our extensive support services, which includes:

- next working day delivery to branch or site on many products
- low carriage paid order value
- free specification and project scheduling
- bespoke design and manufacturing capability
- expert technical support
- plot specific delivery consignments
- in branch and on-site training.

Contents

Cavity trays4-12

Cavity closers and fire and acoustic stops13-17

Gas barrier and damp proofing accessories18-20

Loft access doors21-23

Access panels24-27

Roofline and above28-40

Under floor and through wall ventilation41-49

Index.....50-51

Cavity trays



Everdry adjustable stepped cavity trays for brickwork

Stepped cavity tray system for multi cavity options in brick wall construction of 75mm course heights

Use:

- At the abutment of a pitched roof with a cavity wall
- On external walls - not exceeding 120mm thickness - built from standard brickwork or similar sized components with regular course heights, including mortar of approx. 75mm
- On roof pitches of 15 degrees and above
- Clear cavity widths of between 50mm-110mm

Features and benefits:

- High adjustable back upstand to cover 50 - 110mm clear cavities
- Roof pitch marks on tray upstand to provide installation guidance
- BBA approved

Product codes

For clear cavity widths of 50 - 110mm 75mm brick coursing

Description	Tray Handing	Tray Length	Product codes		Short Lead (150mm)	Long Lead (300mm)
			Unloaded	Unloaded with poly-strip mortar barrier		
Intermediate tray	Right	225mm	10001	10001P	20001S (+ roof pitch °)	20001L (+ roof pitch °)
Intermediate tray	Left	225mm	10002	10002P	20002S (+ roof pitch °)	20002L (+ roof pitch °)
Intermediate tray	Right	420mm*	10011	10011P	20001S (+ roof pitch °)	20001L (+ roof pitch °)
Intermediate tray	Left	420mm*	10012	10012P	20002S (+ roof pitch °)	20002L (+ roof pitch °)
Stopend starter tray	Universal	225mm	10031	10031P	-	-
Stopend starter tray	Right	225mm	-	-	20031S (+ roof pitch °)	20031L (+ roof pitch °)
Stopend starter tray	Left	225mm	-	-	20032S (+ roof pitch °)	20032L (+ roof pitch °)
Corner starter tray	Universal	225mm	10041	10041P	-	-
Corner starter tray	Right	225mm	-	-	20041S (+ roof pitch °)	20041L (+ roof pitch °)
Corner starter tray	Left	225mm	-	-	20042S (+ roof pitch °)	20042L (+ roof pitch °)
Ridge tray	n/a	225mm	10061	10061P	20061S	20061L
Ridge tray	n/a	420mm*	10062	10062P	20062S	20062L

* For roof pitches of 15 - 22.5°

Don't forget
the wall weeps -
see page 12



We take the hard work out of cavity trays
for you!

Talk to us about our free support services:

- estimating and scheduling
- plot specific packing and delivery
- next working day service to branch or site*
- bespoke design and manufacturing





Everdry stepped cavity trays for blockwork

Stepped cavity tray system for blockwork constructions of 225mm course heights

Use:

- At the abutment of a pitched roof with a cavity wall
- On external walls - not exceeding 150mm thickness - built from blockwork or stone with regular course heights, including mortar of approx. 225mm
- On roof pitches of 12.5 degrees and above
- Clear cavity widths of between 50mm-125mm

Features and benefits:

- 150mm high back upstands exceeds minimum requirements
- Angled section between cavity tray base and rear upstand automatically sheds water to the outer leaf
- BBA approved

Also available:

- to suit cavity widths of up to 300mm
- for wall thicknesses up to 150mm
- with poly strip mortar barriers
- with factory fitted lead flashings

Product codes

For clear cavity widths of 50 - 125mm 225mm block coursing 100mm external wall thickness

Description	Tray Handling	Tray Length	Product codes		
			To suit clear cavity widths of 50-74mm	75-99mm	100-125mm
Intermediate tray	Right	625mm	7201	7203	7205
Intermediate tray	Left	625mm	7202	7204	7206
Intermediate tray	Right	1250mm	7211	7213	7215
Intermediate tray	Left	1250mm	7212	7214	7216
Stopend starter tray	Universal	450mm	7231	7233	7235
Corner starter tray	Right	550mm	7241	7243	7245
Corner starter tray	Left	550mm	7242	7244	7246
Ridge tray	-	625mm	7261	7262	7263

Need trays for cavity widths of up to 300mm? No, problem!



We take the hard work out of cavity trays for you!

Talk to us about our free support services:

- estimating and scheduling
- plot specific packing and delivery
- next working day service to branch or site*
- bespoke design and manufacturing



Everdry stepped cavity trays for stonework

Stepped cavity tray system for stonework constructions of 150mm course heights

Use:

- At the abutment of a pitched roof with a cavity wall
- On external walls - not exceeding 150mm thickness - built from natural or reconstituted stone with regular course heights, including mortar, of approx. 150mm
- On roof pitches of 7.5 degrees and above
- Clear cavity widths of between 50mm-125mm

Features and benefits:

- 150mm high back upstands exceeds minimum requirements
- Angled section between cavity tray base and rear upstand automatically sheds water to the outer leaf
- BBA approved

Also available:

- to suit cavity widths of up to 300mm
- for wall thicknesses up to 150mm
- with poly strip mortar barriers
- with factory fitted lead flashings

Product codes

For clear cavity widths of 50 - 125mm 150mm stone coursing 100mm external wall thickness

Description	Tray Handling	Tray Length	Product codes		
			To suit clear cavity widths of 50-74mm	75-99mm	100-125mm
Intermediate tray	Right	450mm	7101	7103	7105
Intermediate tray	Left	450mm	7102	7104	7106
Intermediate tray	Right	625mm	7111	7113	7115
Intermediate tray	Left	625mm	7112	7114	7116
Intermediate tray	Right	1250mm	7121	7123	7125
Intermediate tray	Left	1250mm	7122	7124	7126
Stopend starter tray	Universal	450mm	7131	7133	7135
Corner starter tray	Right	550mm	7141	7143	7145
Corner starter tray	Left	550mm	7142	7144	7146
Ridge tray	-	450mm	7161	7162	7163



We take the hard work out of cavity trays for you!

Talk to us about our free support services:

- estimating and scheduling
- plot specific packing and delivery
- next working day service to branch or site*
- bespoke design and manufacturing





Inter-loc horizontal cavity trays

Preformed horizontal cavity tray system for new build and existing walls

Use:

- At the abutment of a flat roof with a cavity wall
- At the abutment of a lean-to or mono pitch roof with a cavity wall
- Over concrete ring beams
- Over airbricks, cavity liners, ducts, meter boxes, etc.
- On external walls - not exceeding 102.5mm in thickness - built from standard brickwork, blockwork or stone
- Clear cavity widths of between 50mm-125mm

Features and benefits:

- Interlocking mechanism for joining tray lengths to eliminate tray jointing
- Brick bonding lengths for ease of use
- Angled section between cavity tray base and rear upstand automatically sheds water to the outer leaf

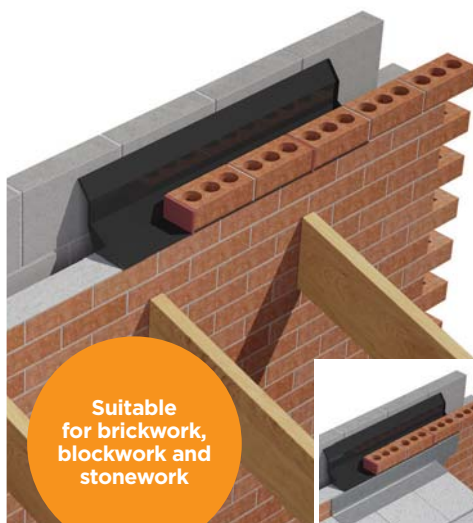
Product codes

New build applications

Description	Effective length	Product codes			
		To suit clear cavity Unloaded	widths of 50-125mm Unloaded with poly-strip mortar barrier	Short Lead (150mm)	Long Lead (300mm)
Inter-loc new build horizontal tray	4 brick	IL4	IL4P	IL4L150	IL4L300
Inter-loc new build horizontal tray	2 brick	IL2	IL2P	IL2L150	IL2L300
External new build 90° corner tray	225mm	EXT90	EXT90P	EXT90L150	EXT90L300
Internal new build 90° corner tray	225mm	INT90	INT90P	INT90L150	INT90L300
External new build 135° corner tray	330mm	EXT135	EXT135P	EXT135L150	EXT135L300
Internal new build 135° corner tray	150mm	INT135	INT135P	INT135L150	INT135L300
Stopend right hand	-	SERH	SERH	SERH	SERH
Stopend left hand	-	SELH	SELH	SELH	SELH

Existing wall applications

Description	Effective length	Product codes	
		To suit clear cavity Unloaded	widths of 50-125mm Unloaded
Inter-loc existing build horizontal tray	4 brick	IL4E	
Inter-loc existing build horizontal tray	2 brick	IL2E	
External existing build 90° corner tray	225mm	EXT90E	
Internal existing build 90° corner tray	225mm	INT90E	
External existing build 135° corner tray	330mm	EXT135E	
Internal existing build 135° corner tray	150mm	INT135E	
Stopend right hand	-	SERH	
Stopend left hand	-	SELH	



Suitable for brickwork, blockwork and stonework

We take the hard work out of cavity trays for you!

Talk to us about our free support services:

- estimating and scheduling
- plot specific packing and delivery
- next working day service to branch or site*
- bespoke design and manufacturing



System 2000 horizontal cavity trays

Horizontal cavity tray system for all types of brick, block and stone new build constructions

Use:

- At the abutment of a flat roof with a cavity wall
- At the abutment of a lean-to or mono pitch roof with a cavity wall
- Over concrete ring beams
- Over airbricks, cavity liners, ducts, meter boxes, etc.
- Clear cavity widths of between 50mm-125mm

Features and benefits:

- Sections join together by factory applied butyl mastic tape to form the cavity tray run
- Low profile lapped joint between sections allows any length of brick, block or stone to be used without difficulty
- Angled section between cavity tray base and rear upstand automatically sheds water to the outer leaf
- Also available to suit cavity widths of up to 300mm

Product codes

New build applications

Description	Effective length	Product codes			
		Unleaded	Unleaded with poly-strip mortar barrier	Short Lead (150mm)	Long Lead (300mm)
System 2000 new build horizontal tray	830mm	2075/880/*	2075/880P/*	2075/880*/L150	2075/880*/L300
System 2000 new build horizontal tray	410mm	2075/460/*	2075/460P/*	2075/460*/L150	2075/460*/L300
External new build 90° corner tray	Various	2010/*	2010P/*	2010L150/*	2010L300/*
Internal new build 90° corner tray	Various	2011/*	2011P/*	2011L150/*	2011L300/*
External new build 135° corner tray	Various	2012/*	2012P/*	2012L150/*	2012L300/*
Internal new build 135° corner tray	Various	2013/*	2013P/*	2013L150/*	2013L300/*
Stopend right hand	-	2003/*	2003P/*	2003/*	2003/*
Stopend left hand	-	2004/*	2004P/*	2004/*	2004/*

* insert required cavity width of either 50 (50-74mm) , 75 (75-99mm), 100 (100-124mm), 125 (125-149mm) or 150 (150-174mm)

Existing wall applications

Description	Effective length	Product codes
		Unleaded
System 2000 existing build horizontal tray	2 brick	2005E/*
External existing build 90° corner tray	-	2006E/*
Internal existing build 90° corner tray	Various	2007E/*
Stopend right hand	-	2003/*
Stopend left hand	-	2004/*

* insert required cavity width of either 50 (50-74mm) , 75 (75-99mm) or 100 (100-124mm)



We take the hard work out of cavity trays for you!

Talk to us about our free support services:

- estimating and scheduling
- plot specific packing and delivery
- next working day service to branch or site*
- bespoke design and manufacturing





Over lintel, general horizontal and parapet wall cavity trays

A range to protect modern steel lintels, general purpose horizontal and parapet wall cavity applications

Use:

- Over steel lintels in external cavity walls
- General purpose horizontal cavity applications such as floor beams, abutments and meter boxes
- For parapet walls

Features and benefits:

- Available for all coursing heights and styles with options available to suit all cavity variations
- No site fabrication, no waste, easy to handle and install
- Tough, durable, scratch resistant and puncture resistant

Don't forget
your weeps
(page 12)



Can't see your project requirements?
Contact us to discuss our made to order service

Product codes

New build applications

Description	To suit lintel rise/upstand height	Length	Product codes		
			To suit clear cavity widths of		
			50-74mm	75-99mm	100-125mm
Lintel cavity tray *	100mm		5001	5002	5003
Lintel cavity tray *	150mm		5004	5005	5006
Lintel cavity tray *	225mm		5007	5008	5009
General purpose horizontal cavity tray	150mm	2.5m	5201	-	-
General purpose horizontal cavity tray	150mm	2.5m	-	5202	-
General purpose horizontal cavity tray	150mm	2.5m	-	-	5203
Parapet wall horizontal cavity tray	200mm	2.5m	5301	-	-
Parapet wall horizontal cavity tray	200mm	2.5m	-	5302	-
Parapet wall horizontal cavity tray	200mm	2.5m	-	-	5303

*Calculate the length of the lintel tray required by adding 300mm to the length of the lintel



Purpose made cavity trays

Special made to measure damp proof course units for dpc applications

Use:

- Wherever DPC is used to form a horizontal cavity tray
- To substitute the cutting, moulding and sealing of a DPC when forming cavity trays, angles, stop ends and column cloaks

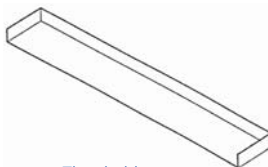
Easy to handle, flexible, tough, durable and puncture resistant

Features and benefits:

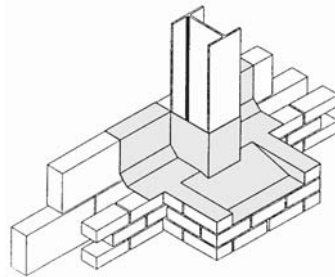
- One piece seamless mouldings eliminate the need for site fabrication to prevent errors through poor workmanship
- Tailor-made to order - manufactured to suit exact customer requirements with delivery to site usually within 10-14 working days

Products in the range:

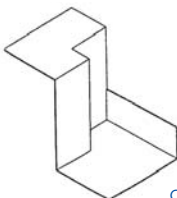
- Cavity trays for brick support systems
- Pier, column and corner cloaks
- Threshold trays
- Change of level units
- Stop end and junction cappings
- Radius units
- Ring beam cavity tray systems



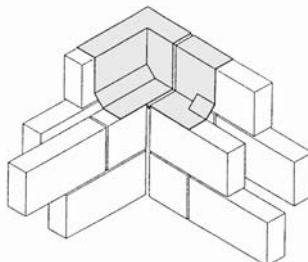
Threshold trays



Pier and column cloaks



Corner/column stopends



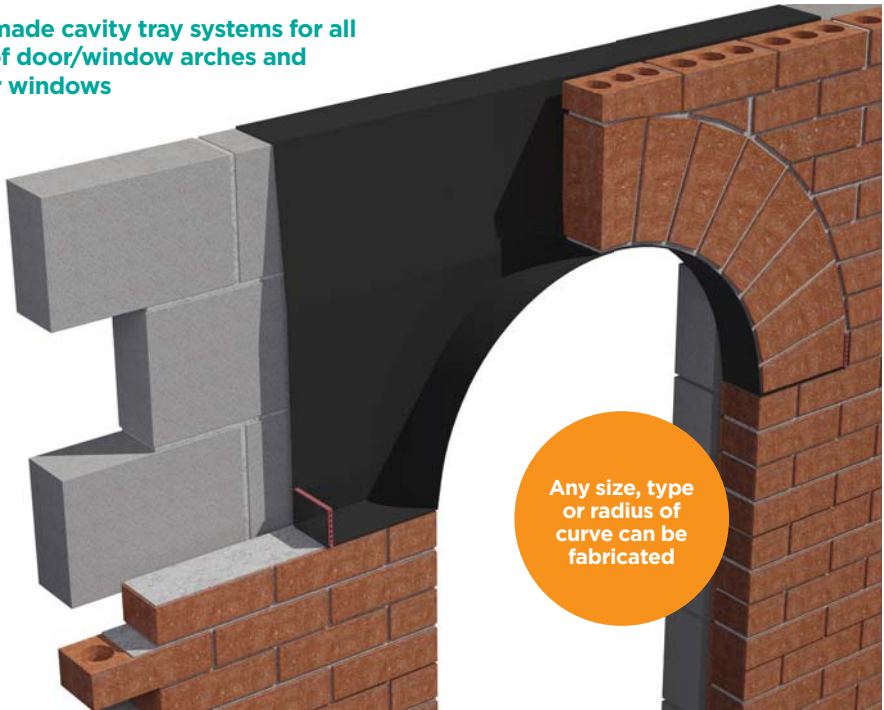
Corner expansion joints





Cavity trays for door and window openings

Tailor-made cavity tray systems for all types of door/window arches and circular windows



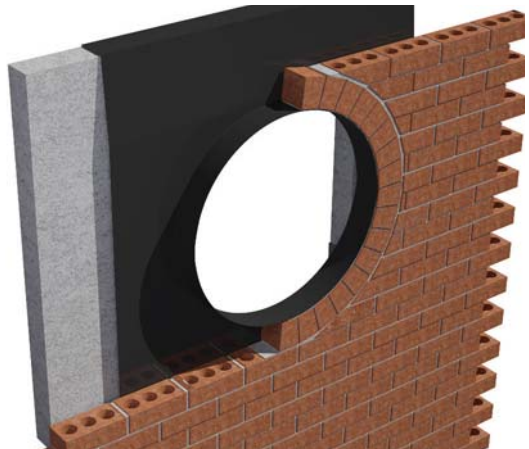
Any size, type
or radius of
curve can be
fabricated

Use:

- Around the opening of an external door or window with an arched top or a circular external window
- On external walls - built from brick, block or stone as well as timber frame constructions - of any thickness and any cavity width

Features and benefits:

- One piece seamless mouldings eliminate the need for site fabrication to prevent errors through poor workmanship
- Tailor-made to order - manufactured to suit exact customer requirements with delivery to site usually within 10-14 working days
- Can be supplied in two or more sections to allow adjustment on site and easily compensate for building tolerances





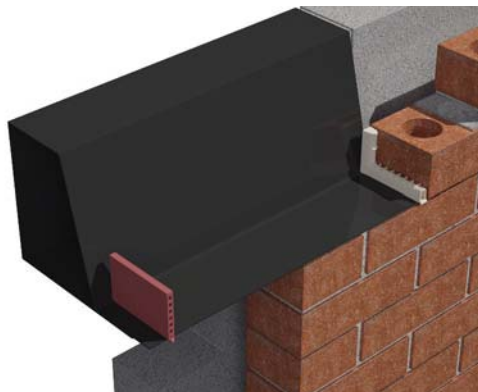
Cavity wall weeps

Multi-function products for discharging water from external walls

Use:

Any situation where water must be discharged from an external wall, e.g:

- At ground floor slab level
- Within cavity tray systems
- Over external lintels
- Where a cavity must be ventilated
- On external walls - 100mm or more in thickness
 - built from brick, block or stone



Features and benefits:

- Purpose made and pre-formed to guarantee reliable discharge of water

Product codes

Description	Height	Width	Length	Product code	Available colours
Wall weep vent	65mm	10mm	100mm	1143 + colour	Terracotta (TE), Buff (BU), Brown (BR), Clear (CL), White (WH), Grey (GR) and Black (BL)
Concealed wall weep	65mm	10mm	100mm	TW1 + colour	Terracotta (TE), Buff (BU), Brown (BR), Clear (CL), White (WH), Grey (GR) and Black (BL)
Weep extension (for TW1 and 1143)	65mm	10mm	50mm	1144	Natural
Retrospective weep vent	n/a	25mm dia	80mm	DV + colour	Natural (1), Buff (2) and Terracotta (3)

Insulation retaining discs

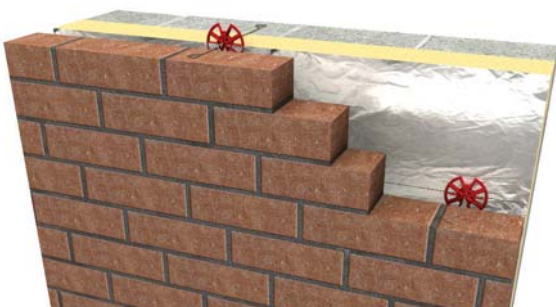
Universal insulation retaining discs to suit most styles and size of wall ties

Use:

- A universally designed insulation retaining disc
- Suitable for general purpose, light duty and heavy duty applications

Features and benefits:

- Will fit most wall ties available from leading wall tie manufacturers
- Suitable for both fibre and rigid slab insulation
- Firm grip design that will not move on the wall tie



Product codes

Insulation retaining disc

Description	Colour/finish	Diameter	Product code
Insulation retaining disc	Red	80mm	IRD80R
Insulation retaining disc	Black	65mm	IRD65BLK



Cavity closers and fire and acoustic stops



Thermo-loc standard cavity closers



Universal closers for eliminating damp and 'cold bridging' around doors, windows and sills

Use:

- To close the cavity at external doors, window jambs and sills
- To provide thermal insulation and prevent 'cold bridging'
- To provide a DPC at external doors, window jambs or sills

Features and benefits:

- Expanded polystyrene insulation (0.038W/mk)
- Satisfies all relevant NHBC, Building Regulation and Standards requirements

Product codes

Thermo-loc standard cavity closers



We can also help you with cavity closers for:

- cavity widths up to 300mm
- non-standard projects

Description	Cavity width	Length	Product codes	
			Standard Cavity	Fully rebated/check reveal
Thermo-loc EPS standard cavity closer	50mm	2.4m	CC2.4EPS/50	CC2.4EPS/CR50
Thermo-loc EPS standard cavity closer	75mm	2.4m	CC2.4EPS/75	CC2.4EPS/CR75
Thermo-loc EPS standard cavity closer	90mm	2.4m	CC2.4EPS/90	CC2.4EPS/CR90
Thermo-loc EPS standard cavity closer	100mm	2.4m	CC2.4EPS/100	CC2.4EPS/CR100
Thermo-loc EPS standard cavity closer	125mm	2.4m	CC2.4EPS/125	CC2.4EPS/CR125
Thermo-loc EPS standard cavity closer	150mm	2.4m	CC2.4EPS/150	CC2.4EPS/CR150
Thermo-loc EPS multi cavity width closer	50 - 100mm	2.4m	CC2.4EPS/MULTI	CC2.4EPS/CRMULTI
Thermo-loc EPS multi cavity width closer	100 - 150mm	2.4m	CC2.4EPS/MULTI150	CC2.4EPS/CRMULTI50
Thermo-loc cavity closer fixing tie	-	-	CCFIX	
Thermo-loc cavity corner former	Various	-	CCFORM	



Thermo-loc plus X cavity closers



Higher insulation closers for eliminating damp and 'cold bridging' around doors, windows and sills

Use:

- To close the cavity at external doors, window jambs and sills
- To provide thermal insulation and prevent 'cold bridging'
- To provide a DPC at external doors, window jambs or sills
- To provide higher insulation properties than standard polystyrene

Features and benefits:

- Extruded polystyrene insulation (0.028W/mk)
- Satisfies all relevant NHBC, Building Regulation and Standards requirements



We can also help you with cavity closers for:

- cavity widths up to 300mm
- fully rebated/check reveals
- non-standard projects

Product codes

Thermo-loc plus X cavity closers

Description	Cavity width	Length	Product codes	
			Standard Cavity	Fully rebated/check reveal
Thermo-loc plus X cavity closer	50mm	2.4m	CC2.4XPS/50	CC2.4XPS/CR50
Thermo-loc plus X cavity closer	75mm	2.4m	CC2.4XPS/75	CC2.4XPS/CR75
Thermo-loc plus X cavity closer	90mm	2.4m	CC2.4XPS/90	CC2.4XPS/CR90
Thermo-loc plus X cavity closer	100mm	2.4m	CC2.4XPS/100	CC2.4XPS/CR100
Thermo-loc plus X cavity closer	125mm	2.4m	CC2.4XPS/125	CC2.4XPS/CR125
Thermo-loc plus X cavity closer	150mm	2.4m	CC2.4XPS/150	CC2.4XPS/CR150
Thermo-loc cavity closer fixing tie	-	-	CCFIX	
Thermo-loc cavity corner former	Various	-	CCFORM	





Thermo-loc FR 30 minute fire rated cavity closers



Fire rated closers for eliminating damp and 'cold bridging' around doors, windows and sills

Use:

- To close the cavity at external doors, window jambs and sills
- To provide thermal insulation and prevent 'cold bridging'
- To provide a DPC at external doors, window jambs or sills
- 30 minute fire rating

Features and benefits:

- Polythene encapsulated low resin and non-combustable rockfibre (0.037W/mk)
- Satisfies all relevant NHBC, Building Regulation and Standards requirements



Product codes

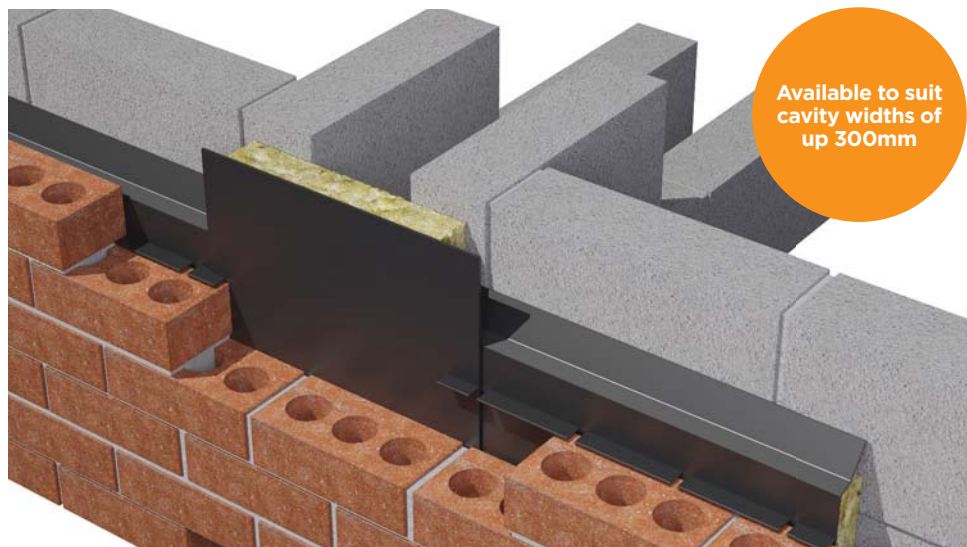
Thermo-loc FR 30 minute cavity closers

Description	Cavity width	Length	Product code
Thermo-loc 30 minute fire rated cavity closer	50mm	2.4m	CC2.4FR/50
Thermo-loc 30 minute fire rated cavity closer	65mm	2.4m	CC2.4FR/65
Thermo-loc 30 minute fire rated cavity closer	75mm	2.4m	CC2.4FR/75
Thermo-loc 30 minute fire rated cavity closer	90mm	2.4m	CC2.4FR/90
Thermo-loc 30 minute fire rated cavity closer	100mm	2.4m	CC2.4FR/100
Thermo-loc cavity closer fixing tie			CCFIX



Acousdpc vertical 4 hour fire rated cavity stops

Vertical acoustic 240 minute fire-rated cavity stop and DPC



Use:

- Effectively reduces the transmission of flanking noise at party wall and external wall junctions
- As a fire stop with integrated DPC

Features and benefits:

- BS6515 polythene DPC and rockfibre insulation slab
- Self supported by compression fit



Product codes

Acousdpc vertical 4 hour fire rated cavity stops

Description	Cavity width	Length	Product code
Acousdpc vertical cavity stop	50mm	1.2m	VACS50
Acousdpc vertical cavity stop	75mm	1.2m	VACS75
Acousdpc vertical cavity stop	85mm	1.2m	VACS85
Acousdpc vertical cavity stop	100mm	1.2m	VACS100
Acousdpc vertical cavity stop	125mm	1.2m	VACS125
Acousdpc vertical cavity stop	150mm	1.2m	VACS150

NB. Please contact the Timloc Technical team for horizontal application.





Acoustop 4 hour fire rated cavity stop socks

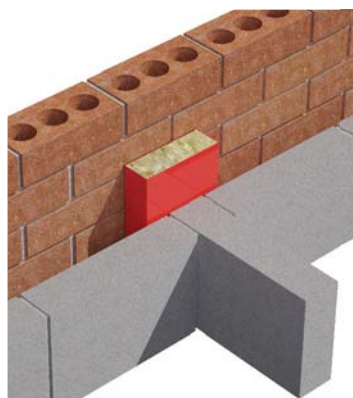
Thermal and acoustic fire stops

Use:

- To restrict the spread of smoke and flames within external masonry and timber frame walls
- To further minimise the effect of flanking noise pollution at wall junctions

Features and benefits:

- Polythene encapsulated low resin and non-combustable rockfibre (0.037W/mk)
- Self supported by compression fit



Product codes

Acoustop 4 hour fire rated cavity stop socks

Description	Cavity width	Length	Product code
Acoustop cavity stop socks	50mm	1.2m	ACSS50
Acoustop cavity stop socks	75mm	1.2m	ACSS75
Acoustop cavity stop socks	85mm	1.2m	ACSS85
Acoustop cavity stop socks	100mm	1.2m	ACSS100
Acoustop cavity stop socks	110mm	1.2m	ACSS110
Acoustop cavity stop socks	115mm	1.2m	ACSS115
Acoustop cavity stop socks	125mm	1.2m	ACSS125
Acoustop cavity stop socks	150mm	1.2m	ACSS150

*Please note that the fire rating performance for 150mm+ cavities is 2 hours

Gas barrier and damp proofing accessories



Gas barrier membrane cavity tray systems and accessories

Working in conjunction with radon, methane, CO² and hydrocarbon gas barrier systems to contain rising gasses across the footprint of the building

Let us take the load with our free cavity tray specification and scheduling service



Use:

- In areas outlined in BRE document 'Radon' guidance on protective measures in new dwellings
- When gas protection is required across the footprint of the building
- Crossing cavity wall constructions to maintain gas barrier integrity
- Forming internal perimeter trays to allow membrane continuity
- Collars for service pipe protrusions
- Following a risk assessment where the requirement is for a good gas protection measure against Radon, CO², Methane and Hydrocarbon
- To be designed and installed in a continuous system around the whole building perimeter

Features and benefits:

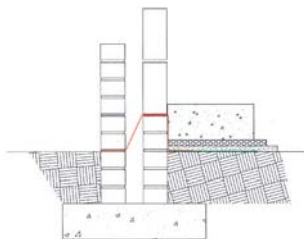
- Preformed mouldings eliminate the need for site fabrication to prevent errors through poor workmanship
- Easy to handle, flexible, tough, durable and puncture resistant
- Can be used for multi-storey or high-loading applications - will not extrude under high loads up to the point of compression failure of wall
- Wide range of standard components with special tailor made accessories also available





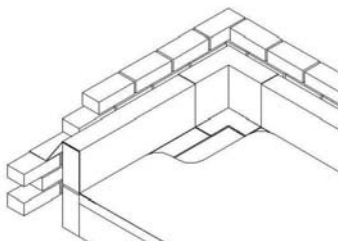
Solutions available

Preformed cavity tray systems - supplied in 2.5m lengths



PCT Range - Horizontal cavity wall perimeter trays

Installed continuously around the external perimeter of a building to allow the membrane to be laid at a later stage and so prevent damage as building works proceeds.

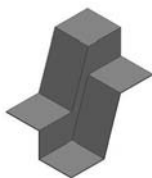


SPT Range - Horizontal slab perimeter trays

Supplied in 2.5 metre lengths and manufactured from heavy duty 2mm polypropylene. They should be installed continuously around the internal slab pour area allowing the membrane to be laid at a later stage and so prevent damage as building work proceeds.

Corners - PCT and SPT ranges

The standard corners are 90° but a wide range of options are available and selection is by cavity size, wall construction and damp roof course or slab rise required.



Change of level units

Stopends & change of level units

Suitable if breaks appear in the natural run of the cavity tray system.



Radon sumps

Radon sumps (RSUMP01)

Prefabricated sumps are required when a sub floor depressurisation is required under full radon protection.

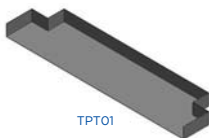


Top hat collar

Top hat pipe collars (TH055, TH082, TH110, TH135, TH160)

Top hat pipe collars are available in sizes from 55mm to 160mm. A standard range of preformed pipe sleeves that are designed to have sealing tape applied to the unit base to offer a unit for sealing to a gas barrier and at the intersection of pipe projections.

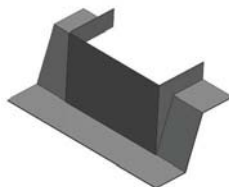
All sealing tapes and jubilee clip fixing bands (JCLIP 5, 6 or 7) are available and supplied separately.



TPT01

Threshold internal protection tray (TPT01)

Designed for detailing rebated areas inside door threshold to maintain water and gas tight integrity without having to trim membrane to fit. Due to possible variations in size, threshold dimensions will be required.



Column cloak

Column cloaks

Non standard applications can require gas and water integrity around columns and stanchions. Timloc will design and produce rigid preformed units that are user friendly: simply contact our Technical Team.

Televent gas sleeve tray (TST01)

For use when telescopic under floor vents need to pass through a perimeter cavity and still maintain gas tight integrity.



Damp proof coursing accessories

Products allowing a complete horizontal cavity tray system to be formed

Use:

- Wherever DPC is used to form a horizontal cavity tray

Features and benefits:

- One piece seamless mouldings eliminate the need for site fabrication to prevent errors through poor workmanship
- Easy to handle, flexible, tough, durable and puncture resistant
- Can be used for multi-storey or high loading applications - will not extrude under loads up to the point of compressive failure of wall

Standard and bespoke solutions available - contact our Technical Team for more information



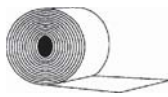
Solutions available



Corner unit

Corner units

For use where a cavity tray must turn the corner of a building



Jointing tape

Jointing tape (100mm x 15m)

For sealing lapped joints in the DPC or for sealing the DPC on to the accessories



Change of level unit

Change of level units

For use where the cavity tray steps up or down along its run



Joint support

Joint supports

For fitting below lapped joints in the DPC to provide support and allow the jointing tape to be sealed correctly



Stopend (full height)



Sloping stopend (75mm high)

Stopend units

For sealing off the ends of the cavity tray at its start and finish

Loft access doors



Drop-in plastic loft access doors

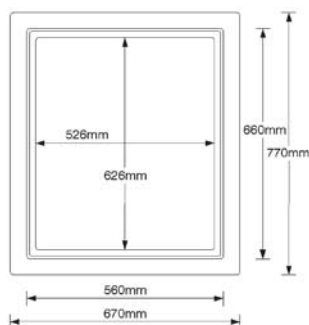
Easy to install, push up/drop in loft access hatch door and frame

Use:

- To provide simple, easy access through ceiling into the loft space

Features and benefits:

- Insulated door panel with integral draught/vapour seal
- Satisfies all relevant NHBC, Building Regulation and Standard requirements



Ideal solution for areas where space is limited

Product code 1168

Drop-in loft access doors

Frame fitting size required	Clear opening size	Insulation U value	Product Code
562mm x 665mm	526mm x 626mm	0.82 W/m ² k	1168
562mm x 665mm	526mm x 626mm	0.35 W/m ² k	1168/35
562mm x 665mm	526mm x 626mm	0.25 W/m ² k	1168/25

Loft door operating pole - 0.5m (for 1169 and 1168 ranges only)

Frame fitting size required	Clear opening size	Insulation U value	Product Code
n/a	n/a	n/a	1170



Zero air leakage* hinged plastic loft access door

Simple clean design

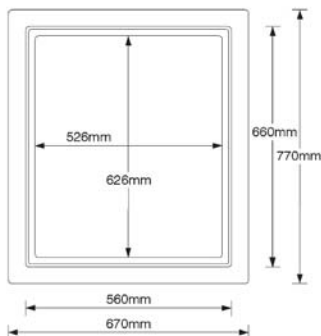


Use:

- To provide simple, easy access through a ceiling into the loft space

Features and benefits:

- Insulated door panel with integral draught/vapour seal
- Satisfies all relevant NHBC, Building Regulation and Standard requirements



Product codes

Hinged loft access doors

Description	Frame fitting size required	Clear opening size	Insulation U value	Product code
Hinged loft door	562 x 662mm	526 x 626mm	0.82W/m²k	1169
Hinged loft door with key lock	562 x 662mm	526 x 626mm	0.82W/m²k	1169KL
Hinged loft door	562 x 662mm	526 x 626mm	0.35W/m²k	1169/35
Hinged loft door with key lock	562 x 662mm	526 x 626mm	0.35W/m²k	1169/35KL
Hinged loft door	562 x 662mm	526 x 626mm	0.25W/m²k	1169/25
Hinged loft door with key lock	562 x 662mm	526 x 626mm	0.25W/m²k	1169/25KL
Loft door operating pole – 0.5m (for 1169 & 1168 only)	n/a	n/a	n/a	1170

*air permeability measured at 50Pa as 0.00m³(h.m²) under positive pressure test conditions





Fire rated steel loft access doors

High performance products with fire protection

Provides up to 60 minutes fire protection and Class O surface spread of flame classification

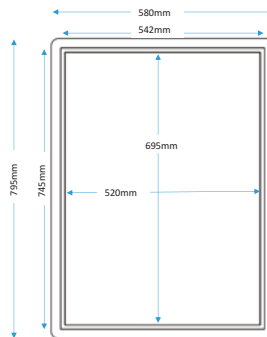


Use:

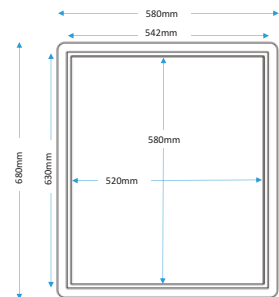
- To provide access through the ceiling into the ceiling void in situations where fire protection is required

Features and benefits:

- Insulated door panel with integral draught/vapour seal
- Lightly textured white polyester powder coating
 - Satisfies all relevant NHBC, Building Regulation and Standard requirements



1160



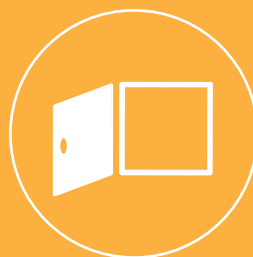
1161

Product codes

Hinged loft access doors

Description	Frame fitting size required	Clear opening size	Insulation U valve	Product code
1 hour fire rated hinged loft door	542 x 745mm	520 x 695mm	0.82W/m²k	1160
1 hour fire rated hinged loft door with key lock	542 x 745mm	520 x 695mm	0.82W/m²k	1160KL
1 hour fire rated hinged loft door	542 x 745mm	520 x 695mm	0.35W/m²k	1160/35
1 hour fire rated hinged loft door with key lock	542 x 745mm	520 x 695mm	0.35W/m²k	1160/35KL
1 hour fire rated hinged loft door	542 x 630mm	520 x 580mm	0.82W/m²k	1161
1 hour fire rated hinged loft door with key lock	542 x 630mm	520 x 580mm	0.82W/m²k	1161KL
1 hour fire rated hinged loft door	542 x 630mm	520 x 580mm	0.35W/m²k	1161/35
1 hour fire rated hinged loft door with key lock	542 x 630mm	520 x 580mm	0.35W/m²k	1161/35KL
Loft door operating pole (0.5m) for 1160 and 1161 ranges only				1162

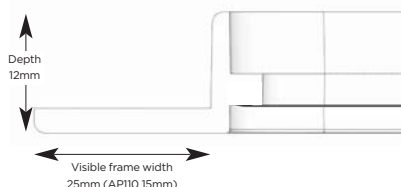
Access panels



Plastic access panels

The answer to unsightly controls and fittings

Use: Cost effective yet reliable and simple method for providing access to services and connections behind dry lined walls, ducts, ceilings (exc. AP450 and AP450KL) and cupboard units



Products in the range

Plastic access panel

Frame fitting size	Clear opening size	Overall panel and frame dimension	Door type	Key lock	Product code
115 x 165mm	100 x 150mm	135 x 185mm	Clip fit	n/a	API10
155 x 235mm	140 x 220mm	195 x 275mm	Hinged	n/a	API50
205 x 205mm	190 x 190mm	245 x 245mm	Clip fit	n/a	AP200
305 x 305mm	290 x 290mm	345 x 345mm	Hinged	n/a	AP300
470 x 470mm	455 x 455mm	510 x 510mm	Hinged	n/a	AP450*
155 x 235mm	140 x 220mm	195 x 275mm	Hinged	Yes	API50KL
305 x 305mm	290 x 290mm	345 x 345mm	Hinged	Yes	AP300KL
470 x 470mm	455 x 455mm	510 x 510mm	Hinged	Yes	AP450KL*

* not suitable for ceiling installations

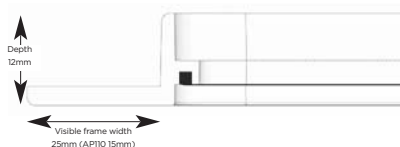




Airtight plastic access panels

Fully airtight and high level acoustic performance plastic access panels

Use: Provides access to services and connections behind dry lined walls, ducts, ceilings and cupboard units



Product codes

Airtight plastic access panels

Frame fitting size	Clear opening size	Overall panel and frame dimension	Door type	Product code
115 x 165mm	100 x 150mm	135 x 185mm	Clip fit	AP110AT
155 x 235mm	140 x 220mm	195 x 275mm	Clip fit	AP150AT
205 x 205mm	190 x 190mm	245 x 245mm	Clip fit	AP200AT
305 x 305mm	290 x 290mm	345 x 345mm	Clip fit	AP300AT
470 x 470mm	455 x 455mm	510 x 510mm	Clip fit	AP450AT

Unique airtight seal design reduces the air permeability to 0.00/h.m at + 50pa

Metal non-fire rated access panels – picture frame

Lightweight non-fire rated metal access panels for access to mechanical, electrical and other building services

Use:

- Provides access to services and connections behind dry lined walls, ducts and ceilings
- For applications where plastic access panels are not suitable and a fire rating is not required

Products in the range

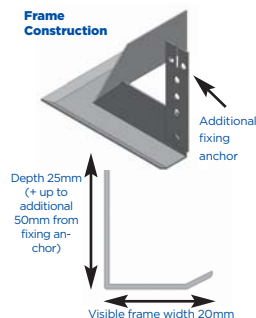
Metal non-fire rated access panels with picture frame

Frame fitting size	Clear opening size	Overall panel and frame dimension	Door and lock type	Product code
155 x 155mm	145 x 145mm	185 x 185mm	Hinged with twist lock	APB150x150NFR
205 x 205mm	195 x 195mm	235 x 235mm	Hinged with twist lock	APB200x200NFR
305 x 305mm	295 x 295mm	335 x 335mm	Hinged with twist lock	APB300x300NFR
455 x 455mm	425 x 425mm	485 x 485mm	Hinged with twist lock	APB450x450NFR
555 x 555mm	525 x 525mm	585 x 585mm	Hinged with twist lock	APB550x550NFR
605 x 605mm	575 x 575mm	635 x 635mm	Hinged with twist lock	APB600x600NFR



Supplied with additional fixing anchors (+50mm) for deeper wall and ceiling installations

Frame Construction



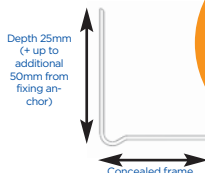


Metal non-fire rated access panels – beaded frame

Lightweight non-fire rated metal access panels with no visible frame for access to mechanical, electrical and other building services

Use:

- Provides access to services and connections behind dry lined walls, ducts and ceilings
- Installation into an aperture to achieve a frameless flush finish
- Robust and durable alternative to plaster board faced panels, which are highly susceptible to damage
- For applications where plastic access panels are not suitable and a fire rating is not required



Aesthetic frameless appearance after plaster skimming

Products in the range

Metal non-fire rated access panels with beaded frame

Frame fitting size	Clear opening size	Overall panel and frame dimension	Door and lock type	Product code
305 x 305mm	295 x 295mm	335 x 335mm	Hinged with twist lock	APB300x300NFRB
455 x 455mm	450 x 450mm	485 x 485mm	Hinged with twist lock	APB450x450NFRB
605 x 605mm	580 x 580mm	635 x 635mm	Hinged with twist lock	APB600x600NFRB

Metal 1 hour fire rated access panels – picture frame

Multi performance 1 hour fire rated steel access panels featuring mineral wool and draught stripping for greatly reduced air leakage opportunities and an excellent acoustic performance

Use:

- Provides access to services and connections behind dry lined walls, ducts, ceilings where a 1 hour fire rating is required
- Projects with additional reduced air leakage and /or acoustic performance requirements



Mineral wool insulation and draught strip seal

Products in the range

Metal 1 hour rated access panels – picture frame

Frame fitting size	Clear opening size	Overall panel and frame dimension	Door and lock type	Product code
155 x 155mm	110 x 110mm	200 x 200mm	Hinged with T-key lock	APC150x150CR
155 x 235mm	110 x 190mm	200 x 280mm	Hinged with T-key lock	APC150x230CR
205 x 205mm	160 x 160mm	250 x 250mm	Hinged with T-key lock	APC200x200CR
305 x 305mm	260 x 260mm	350 x 350mm	Hinged with T-key lock	APC300x300CR
455 x 455mm	410 x 410mm	500 x 500mm	Hinged with T-key lock	APC450x450CR
555 x 555mm	510 x 510mm	600 x 600mm	Hinged with T-key lock	APC550x550CR
605 x 605mm	560 x 560mm	650 x 650mm	Hinged with T-key lock	APC600x600CR





Metal 1 hour fire rated access panels – beaded frame

Multi performance 1 hour fire rated robust mild steel access panels, with no visible frame when installed. Featuring mineral wool and draught stripping for reduced air leakage opportunities and an excellent acoustic performance

Use:

- Provides access to services and connections behind dry lined walls, ducts and ceilings where a 1 hour fire rating is required
- Installation into an aperture to achieve a frameless flush finish
- Robust and durable alternative to plaster board faced panels, which are highly susceptible to damage

Products in the range

Metal 1 hour rated access panels – beaded frame

Frame fitting size	Clear opening size	Overall panel and frame dimension	Door and lock type	Product code
305 x 305mm	260 x 260mm	350 x 350mm	Hinged with T-key lock	APC300x300CRB
455 x 455mm	410 x 410mm	500 x 500mm	Hinged with T-key lock	APC450x450CRB
605 x 605mm	560 x 560mm	650 x 650mm	Hinged with T-key lock	APC600x600CRB



T-key lock mechanism - key lock available upon request

Metal 1 hour fire rated access panels (deep profile) – picture frame

Multi performance 1 hour fire rated steel access panels. Featuring mineral wool and draught stripping for reduced air leakage opportunities and an excellent acoustic performance

Use:

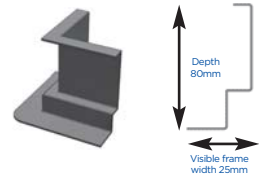
- Provides access to services and connections behind deep dry lined walls, ducts and ceilings applications where a 1 hour fire rating is required
- Projects with additional reduced air leakage and /or acoustic
- 80mm deep profile frame ideal for deep wall and ceiling applications

Products in the range

Metal 1 hour rated access panels – picture frame

Frame fitting size	Clear opening size	Overall panel and frame dimension	Door and lock type	Product code
555 x 555mm	510 x 510mm	600 x 600mm	Hinged with T-key lock	APC550x550FR
605 x 605mm	560 x 560mm	650 x 650mm	Hinged with T-key lock	APC600x600FR
605 x 905mm	560 x 860mm	650 x 950mm	Hinged with T-key lock	APC600x900FR
905 x 905mm	860 x 860mm	950 x 950mm	Hinged with T-key lock	APC900x900FR
605 x 1205mm	560 x 1160mm	650 x 1250mm	Hinged with T-key lock	APC600x1200FR

T-key lock mechanism - key lock available upon request



Roofline and above



Eaves ventilation

Roof soffit strip vent type C

Efficient, strip vent type eaves ventilator

2.4m length

10mm airflow (10,000mm² per metre)

Use: To ventilate pitched roofs of 15° or more and the roof void is attic or loft space

Product codes:

Black **1137BL**, Brown **1137BR**, White **1137WH**



25mm airflow (25,000mm² per metre)

Use: To ventilate pitched roofs of less than 15°, flat roofs and habited roof space

Product codes:

Brown **1138BR**, White **1138WH**

Circular push-in soffit ventilator

Effective circular ventilator in a range of colours

70mm diameter

Airflow of 2000mm² at 200mm centres

Use: To ventilate pitched roofs of 15° or more and the roof void is attic or loft space

Product codes:

Anthracite **1139**, White **1140**, Black **1141**, Brown **1142**





300mm over fascia strip ventilator

Eaves ventilator of superior strength construction
300mm length

10mm airflow (10,000mm² per metre)

Use: To ventilate pitched roofs of 15° or more and the roof void is attic or loft space

Product codes: Black **3011BL**, Brown **3011BR**, White **3011WH**



25mm airflow (25,000mm² per metre)

Use: To ventilate pitched roofs of less than 15°, flat roofs and habited roof space

Product codes: Black **3011/25BL**, Brown **3011/25BR**, White **3011/25WH**

1m over fascia strip ventilator

Durable eaves ventilator in convenient 1m lengths
1m length

10mm airflow (10,000mm² per metre)

Use: To ventilate pitched roofs of 15° or more and the roof void is attic or loft space

Product codes: Black **OF1BL**, White **OF1WH**



25mm airflow (25,000mm² per metre)

Use: To ventilate pitched roofs of less than 15°, flat roofs and habited roof space

Product codes: Black **OF2BL**, White **OF2WH**

Multi-function over fascia eaves vent system with felt support and bird comb

Convenient single product multi-function system
900mm length

10mm airflow (10,000mm² per metre)

Use: To ventilate pitched roofs of 15° or more and the roof void is attic or loft space

Product codes:

Black **without** bird comb **3014**

Black **with** bird comb **3014C**





Corbel vent

Designed for use with corbelled brickwork details

2.4m length

10mm airflow (10,000mm² per metre)

Use: To ventilate pitched roofs of 15° or more and the roof void is attic or loft space

Product code: Black **3012**

Supplied with 8 fixing clips per length



Roll form eaves vent rafter tray

Easy to install system to maintain ventilation between loft insulation and roofing felt

300mm wide x 6m length

25mm ventilation channel

Use: Single row coverage suitable for insulation depth of 100 - 250mm

Product code: Black **1121**



600mm wide x 6m length

25mm ventilation channel

Use: Single row coverage suitable for insulation depth of 100 - 400mm

Product code: Black **1131**

Can be butt jointed together to form full coverage for deep fill loft insulation

6m eaves vent packs

A complete, easy to fit ventilation system in one pack

300mm wide roll form eaves vent rafter tray

10mm airflow

(10,000mm² per metre)

Use: To ventilate pitched roofs of 15° or more and the roof void is attic or loft space

Product code: Black **EVP6**

600mm wide roll form eaves vent rafter tray

10mm airflow

(10,000mm² per metre)

Use: To ventilate pitched roofs of 15° or more and the roof void is attic or loft space

Product code: Black **EVP/600**



Contains:

- 6no x 1m over fascia vents
- 1no x 6m roll form eaves vent roll our rafter tray
- 6no 600mm felt support trays

300mm wide roll form eaves vent rafter tray

25mm airflow

(25,000mm² per metre)

Use: To ventilate pitched roofs of less than 15°, flat roofs and habited roof space

Product code: Black **EVP6-25**

600mm wide roll form eaves vent rafter tray

25mm airflow

(25,000mm² per metre)

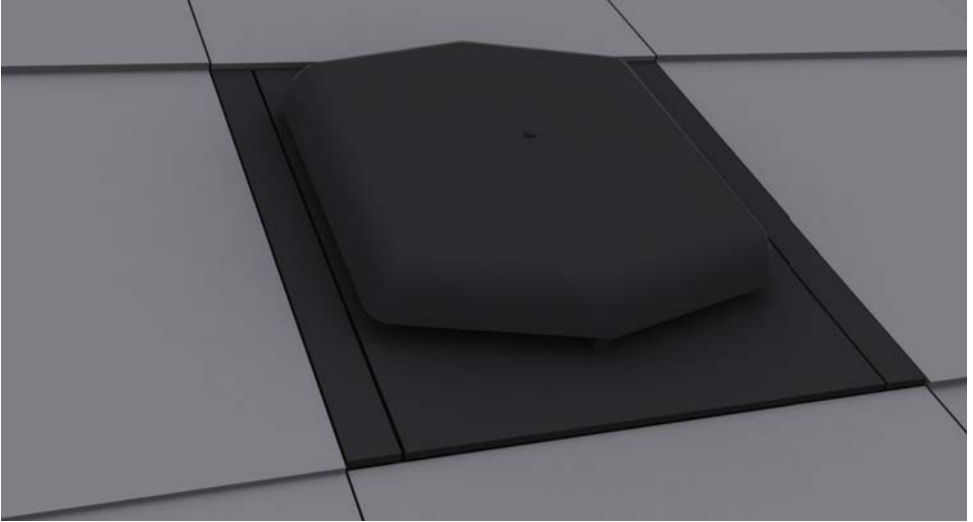
Use: To ventilate pitched roofs of less than 15°, flat roofs and habited roof space

Product code: Black **EVP6/25600**





Slate and tile ventilation



Universal slate ventilator

Ideal for new build and existing roof applications

Suits slate sizes of 610 x 305mm or 510 x 255mm

10mm airflow (10,000mm² per metre)

Product code: Black **4001**

Accessories

Universal slate ventilator pipe adapter kit

Use:

- Allows for a 110mm soil vent pipe
- Kit includes pipe adapter, 0.5m flexible PVC pipe and fixing tie

Product code: Black **4101**

Universal slate ventilator pipe adaptor

Use:

- Allow for 110mm soil vent pipe

Product code: Black **4102**

Universal slate ventilator flexible PVC pipe

Use:

- 500mm

Product code: Black **4103**

Universal slate ventilator flexible fixing tie only

Product code: Black **4101**



Inline plain roof tile ventilator

Plain roof tile ventilator

Free vent area 6,250mm²

Product code: TV8+colour



Available
in terracotta,
red, sepia and
anthracite

Inline plain tile ventilator adaptor

110mm diameter adaptor for connection to soil vent/mechanical extraction

Product code: TV8AD

Inline profiled roof tile ventilator for double pantile interlocking tiles

Profiled tile ventilator suitable for Marley Mendip, Redland Grovebury and similar profiles

Free vent area 15,000mm²

Product code: TV62MEN+colour



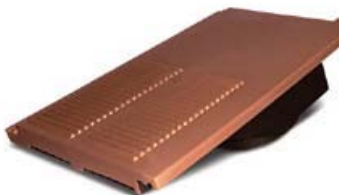
Available
in terracotta,
red, sepia and
anthracite

Inline profiled roof tile ventilator for flat interlocking tiles

Suitable for Marley Modern, Russell Grampian, Redland Mini Stoneworld and other similar profiles

Free vent area 15,000mm²

Product code: TV62MDA+colour



Available
in terracotta,
red, sepia and
anthracite

Inline profiled roof tile ventilator for castellated interlocking tiles

Suitable for Redland Renown, Marley Ludlow and similar profiles

Free vent area 15,000mm²

Product code: TV62MLM+colour



Available
in terracotta,
red, sepia and
anthracite





Inline profiled roof tile ventilator for double roman profile interlocking tiles

Suitable for Marley Double Roman, Russell Double Roman, Redland Landmark Double Roman, Sandtoft Double Roman and other similar profiles

Free vent area 15,000mm²

Product code: TV62FRA+colour



Available
in terracotta,
red, sepia and
anthracite

Inline profiled roof tile vent adaptor

Accepts ducting of diameters of 100, 110, 125, 150 and 160mm (cut to suit), for connection to soil vent/mechanical extraction

Product code: TV62AD

Accessories

Eaves comb filler

Designed to prevent entry of birds and vermin below profiled roof tiles

1m length

Product code: Black 1136



Eaves vent protector/felt support tray

Designed to support and prevent damage to roofing felt/membrane

1.5m length

Product code: Black 3017

600mm length

Product code: Black 1128





GRP valleys

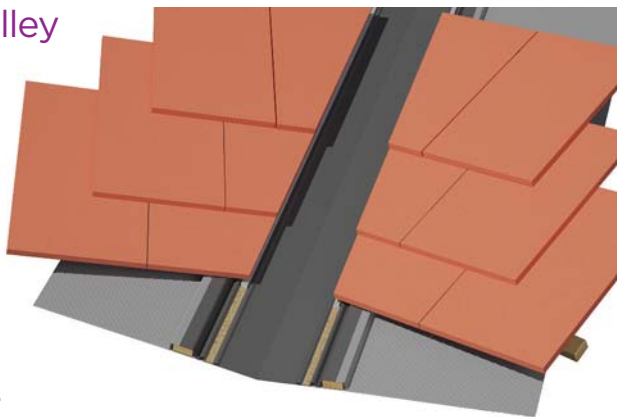
Durable wet fix GRP products for any type of roof tile or slate coverings.

Preformed profiles that provide secondary protection against water ingress at sloping roof and cavity wall abutments

Wet fix universal GRP valley trough for slate and tile

360mm x 3m

Product code: Lead grey **VALLEYTROUGH**



Wet fix GRP valley trough for slate only

330mm x 3m

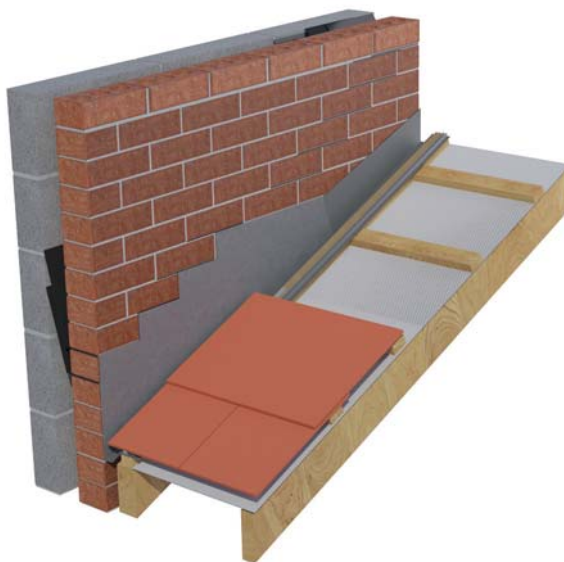
Product code: Lead grey **VALLEYTROUGH/SL**

Wet fix universal GRP joining/bonding strip for slate and tile grey

Suitable for all types of roof covering

216mm x 3m

Product code: Lead grey **JOININGSTRIP**



Wet fix GRP abutment soaker/secret gutter

Suitable for all types of roof covering

140mm x 3m

Product code: Lead grey **88111**



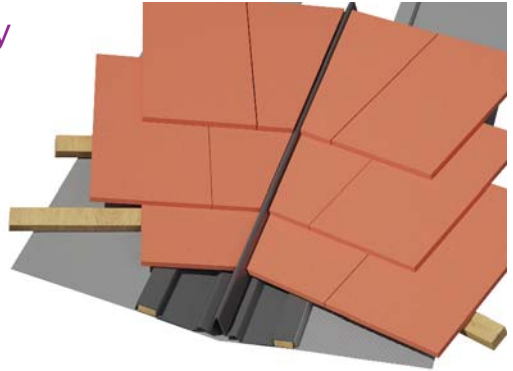


Mortar-less GRP systems for slate and tile roofs

Dry fix universal GRP valley trough for slate and tile

400mm x 3m x 110mm upstand

Product code: Lead grey **88106**



Dry fix GRP valley trough for slate

400mm x 3m x 70mm upstand

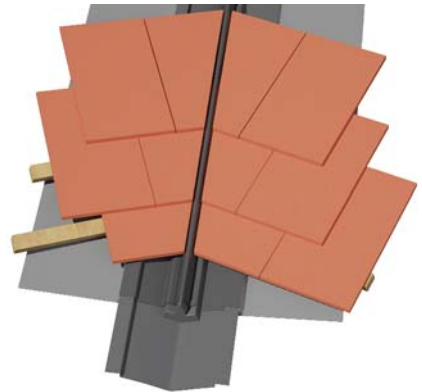
Product code: Lead grey **88103**

Dry fix valley trough eaves closer for slate and tile

Product code: Lead grey **88107**

Dry fix valley trough eaves closer for slate

Product code: Lead grey **88104**

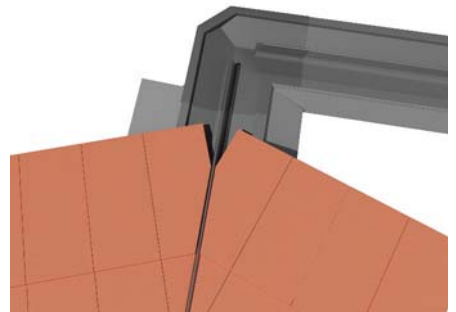


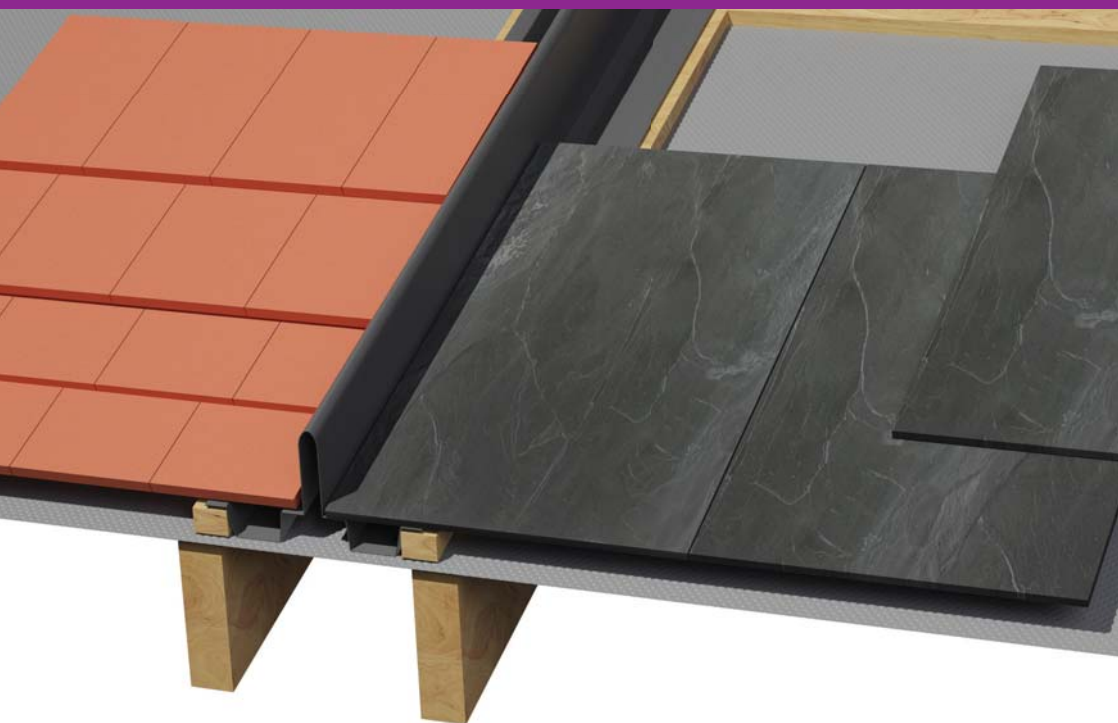
Dry fix 90°valley trough head closer for slate and tile

Product code: Lead grey **88108**

Dry fix valley trough head closer for slate

Product code: Lead grey **88105**



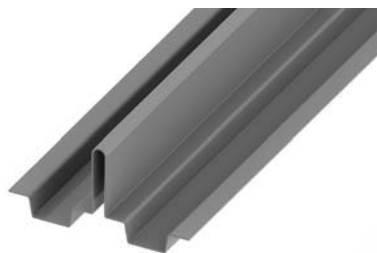


Mortar-less GRP systems for slate and tile roofs

Dry fix universal GRP joining strip for slate and tile

225mm x 3m x 110mm upstand

Product code: Lead grey **88110**



88110 - Universal for tile and slate

Dry fix GRP joining/bonding strip for slate

225mm x 3m x 70mm upstand

Product code: Lead grey **88109**



88109 - For slate





Dry fix systems



Simple and quick '1st piece' eaves closer installation

Dry fix verge system for profiled roof tiles

A robust, attractive and weather resistant verge system alternative to wet mortar bedding

Use:

- Large format, interlocking concrete and clay profiled tiles
- Batten gauges between 260-345mm
- Most pitched roof types from 15-55°
- Verges with or without bargeboards
- New build and refurbishment projects

Product codes

Colour and product code

Description	Grey	Terracotta	Brown	
Dry fix verge right hand piece	99117	99118	99116	1
Dry fix verge left hand piece	99121	99122	99120	2
Dry fix verge angled ridge/apex piece	99109	99110	99108	3
Dry fix verge round ridge/apex piece	99113	99114	99112	4
Dry fix verge eaves closer pack (left and right units)	99126	99127	99125	5
Dry fix verge end grain batten bracket (optional)	99124	99124	99124	6





Dry fix continuous verge system for slate and flat tiles

A continuous verge system that presents a clean flush finish and an effective and virtually maintenance free alternative to wet mortar bedding



Use:

- Slate and tile thickness between 4 and 13mm
 - slate and slate effect tiles
 - flat interlocking concrete tiles
- Most pitched roof types from 15-55°
- Verges with or without bargeboards
- Most roof types and configurations
- New build and refurbishment projects

Product codes

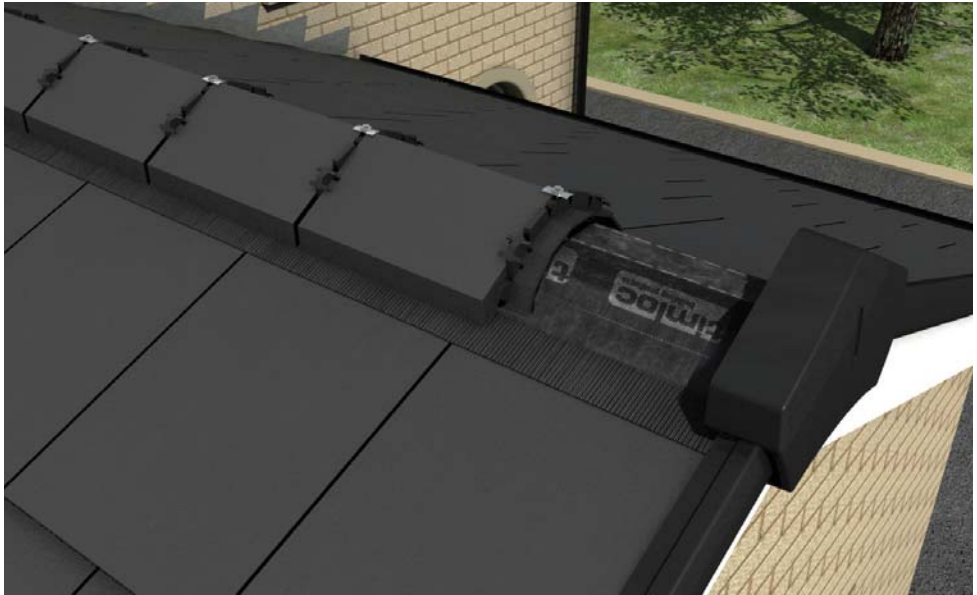
Description	Colour	Product code	
3m new build dry fix continuous verge for slate/flat tile	Dark grey	66101	7
3m refurbishment dry fix continuous verge for slate/flat tile	Dark grey	66105	8
Dry fix continuous verge for slate angled ridge/apex piece	Dark grey	66120	9
Dry fix continuous verge for slate/flat tile eaves closer cap pack (left and right units)	Dark grey	66117	10
Dry fix continuous verge for slate/flat tile joint union (pair)	Dark grey	66124	11





6m roll out dry fix ridge system

Convenient '1 pack' mechanical fix solution for roof ridge installations



Use:

- Most types of slate, concrete or clay roof tiles
- Round or angled ridge tiles
- Most pitched roof types from 15-55°
- New build and retro-fit projects
- Provides 5000mm²/m (5mm continuous) ridge ventilation

Components supplied in the pack:

- 10no. ridge batten brackets
- 1no. 6m water resistant and air permeable ridge roll
- 13no. ridge unions
- 26no. ridge union clips
- 13no. countersunk wood fixing screws
- 13no. clamping plates
- 13no. EPDM washers

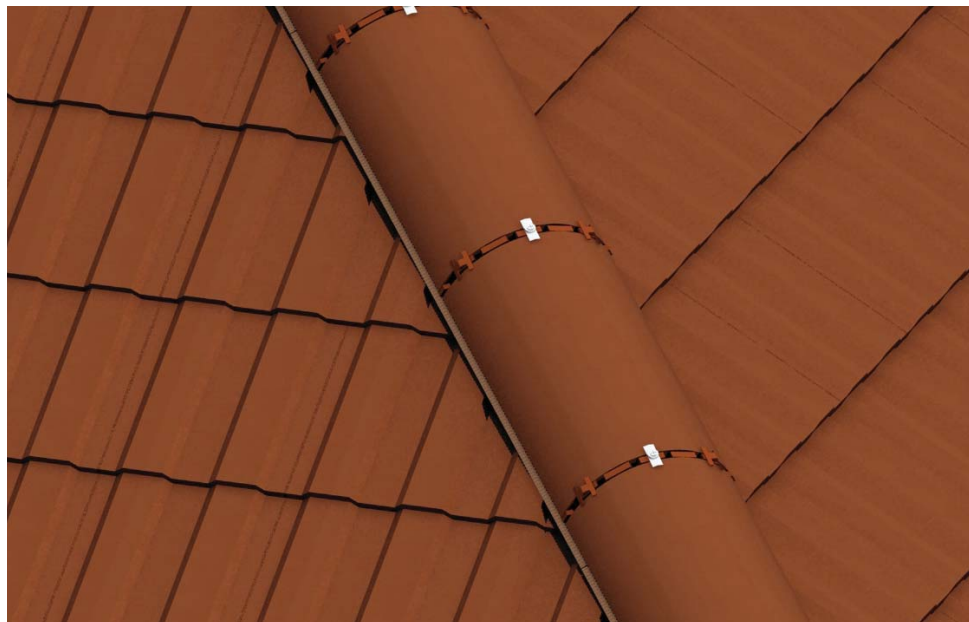
Product codes

Description	Colour	Product code
6m roll out dry fix ridge system pack	Black	44600
6m roll out dry fix ridge system pack	Terracotta	44601
6m roll out dry fix ridge system pack	Brown	44602



6m roll out dry fix hip system

A mortar free, clean and easy to install roof hip line system that provides a long lasting protection and ventilation



Use:

- slate, concrete or clay hip tiles
- round or angled hip tiles
- most pitched roof types from 15-55°
- New build and retro-fit projects
- Provides 5000mm²/m (5mm continuous) hip ventilation if required

Components supplied in the pack:

- 6no. hip trays
- 1no. 6m water resistant and air permeable ridge roll
- 13no. ridge unions
- 26no. ridge union clips
- 13no. countersunk wood fixing screws
- 13no. clamping plates
- 13no. EPDM washers

Product codes

Description	Colour	Product code
6m roll out dry fix hip system pack	Black	44610
6m roll out dry fix hip system pack	Terracotta	44611
6m roll out dry fix hip system pack	Brown	44612
Dry fix hip tray only pack (6 trays)	Black	44623



Under floor and through wall ventilation



Cavity wall weeps

Multi-function products for discharging water from external walls

Use:

Any situation where water must be discharged from an external wall, e.g:

- At ground floor slab level
- Within cavity tray systems
- Over external lintels
- Where a cavity must be ventilated
- On external walls - 100mm or more in thickness - built from brick, block or stone
- Timber framed buildings and external rendered walls



Features and benefits:

- Purpose made and pre-formed to guarantee reliable discharge of water
- Range of colours to blend with masonry or mortar colour

**Weep
solution
for every
application**



Product codes

Description	Height	Width	Length	Product code	Available colours
Wall weep vent	65mm	10mm	100mm	1143 + colour	Terracotta (TE), Buff (BU), Brown (BR), Clear (CL), White (WH), Grey (GR) and Black (BL)
Concealed wall weep	65mm	10mm	100mm	TW1 + colour	Terracotta (TE), Buff (BU), Brown (BR), Clear (CL), White (WH), Grey (GR) and Black (BL)
Weep extension (+ 50mm) for 1143 and TW1 weeps	65mm	10mm	50mm	1144	Natural only
Retrospective weep vent	n/a	25mm dia	80mm	DV + colour	Natural (1), Buff (2) and Terracotta



Airbrick and external airbrick cowls

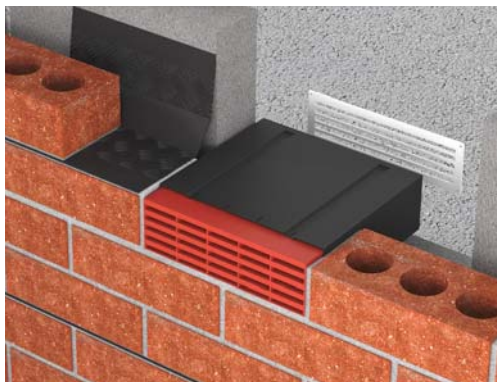
Effective plastic airbrick ventilator available in a range of colours

Use:

- In conjunction with the telescopic underfloor ventilator for providing ventilation below suspended ground floors
- In conjunction with cavity sleeves for ventilation through external walls to a building interior
- To provide an external cowl over the airbrick to help reduce draughts caused by wind blasts

Features and benefits:

- Equivalent area of 6170mm² per air brick
- Integral clip together facility allows multiple airbricks to be stacked to form 9" x 6" and 9" x 9" sizes



Product codes

Airbricks

Description	Height	Width	Depth	Colour	Product code
9 x 3" plastic airbrick	69mm	215mm	60mm	Buff	1201ABBU
9 x 3" plastic airbrick	69mm	215mm	60mm	Terracotta	1201ABTE
9 x 3" plastic airbrick	69mm	215mm	60mm	Grey	1201ABGR
9 x 3" plastic airbrick	69mm	215mm	60mm	Brown	1201ABBR
9 x 3" plastic airbrick	69mm	215mm	60mm	Black	1201ABBL
9 x 3" plastic airbrick	69mm	215mm	60mm	White	1201ABWH

Product codes

External airbrick cowls

Description	Fixing hole dimensions	Overall dimensions	Equivalent area	Colour	Product code
9 x 3" external cowl	237 x 78mm	255 x 96mm	8700mm ²	Terracotta	ABC93TE
9 x 3" external cowl	237 x 78mm	255 x 96mm	8700mm ²	Brown	ABC93BR
9 x 6" external cowl	237 x 136mm	255 x 154mm	16000mm ²	Terracotta	ABC96TE
9 x 6" external cowl	237 x 136mm	255 x 154mm	16000mm ²	Brown	ABC96BR
9 x 9" external cowl	256 x 217mm	274 x 235mm	23900mm ²	Terracotta	ABC99TE
9 x 9" external cowl	256 x 217mm	274 x 235mm	23900mm ²	Brown	ABC99BR





Cavity sleeves and extensions

Tough, flexible ventilators for external walls

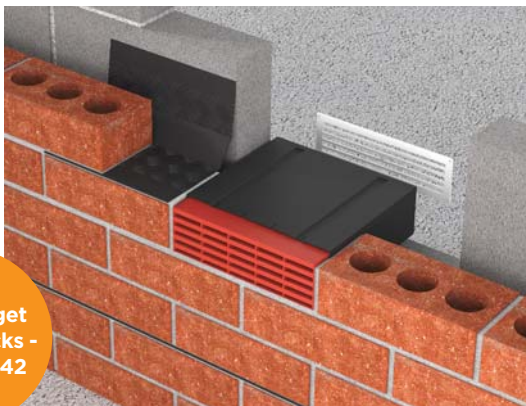
Use:

- To provide ventilation through external walls to the building interior

Features and benefits:

- Always use in conjunction with a Timloc airbrick
- Unrestricted free airflow

Don't forget the air bricks - see page 42



Product codes

Description	To suit	Provides effective additional extension of	Product code
9 x 3" through wall cavity sleeve	Single airbrick	n/a	1202/1
Extension sleeve for 9 x 3" cavity sleeve	n/a	90mm	1237
9 x 6" cavity sleeve	Two airbricks stacked	n/a	1202/2
Extension sleeve for 9 x 6" cavity sleeve	Between airbrick and front of vent	90mm	1236
9 x 3 baffle	1202/1 and 1202/2 (2no. required)	n/a	1238

Telescopic underfloor vent

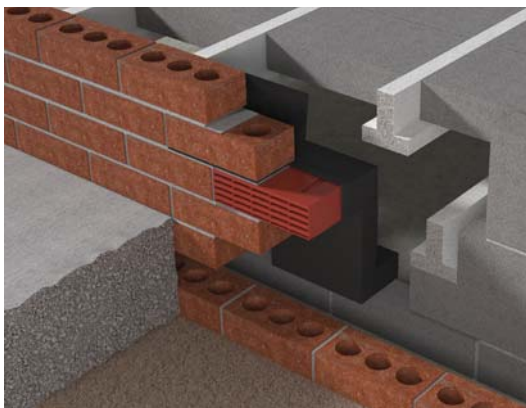
Tough, adjustable ventilator for ground floors

Use:

- To provide ventilation below suspended ground floors

Features and benefits:

- Equivalent area of 6000mm² per unit
- Telescopic and adjustable for a step of 3, 4 or 5 brick courses
- Horizontal and vertical extension accessories available



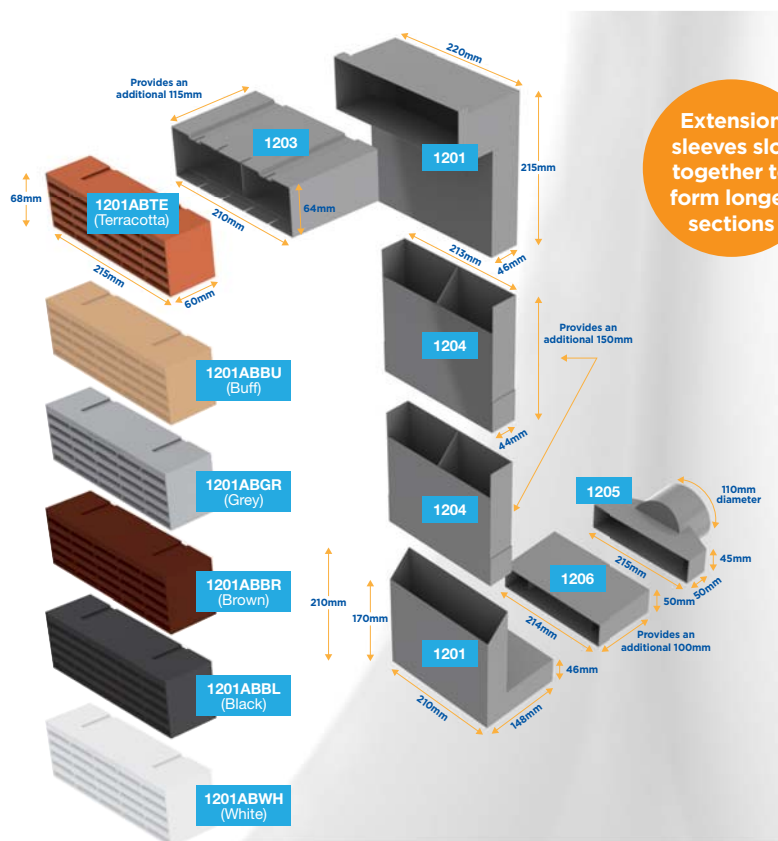
Product code

Description	Height	Width	Depth	Product code
Telescopic underfloor vent for 3 - 5 brick courses	225 - 375mm	220mm	150mm	1201



Telescopic underfloor vent extension accessories

Easy-to-use accessories for a range of underfloor ventilation applications



Use:

- To provide horizontal or vertical extension to a telescopic underfloor ventilator to accommodate different wall/cavity/brick courses etc
- To connect the ventilator to a duct

Features and benefits:

- Does not restrict airflow through the main telescopic underfloor ventilator
- Purpose-made accessories eliminate the need for on site modifications

Product codes

Description	Application area	Provides effective additional extension of	Product code
Horizontal front extension sleeve	Between airbrick and front of vent	115mm	1203
Vertical extension sleeve	Between upper and lower parts of vent	150mm	1204
Duct adapter	Fits into lower rear opening of vent	To connect to 110mm diameter drainage pipe	1205
Horizontal rear extension sleeve	Fits into lower rear opening of vent	100mm	1206





Ducting to airbrick adapter sets

Simple to install pre-assembled sets, which quickly and conveniently adapts extraction ductwork to terminate at a standard plastic airbrick

Use:

At:

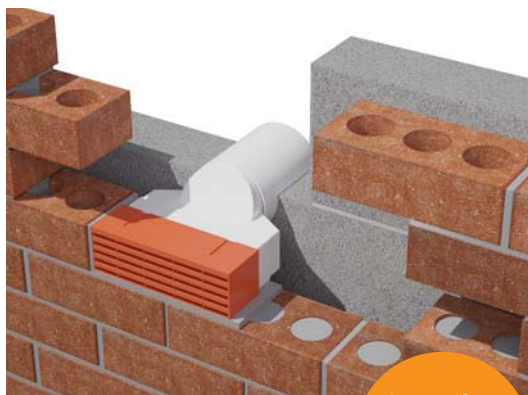
- Floor level voids
- External walls

Suitable for round and rectangular rigid extraction ductwork from:

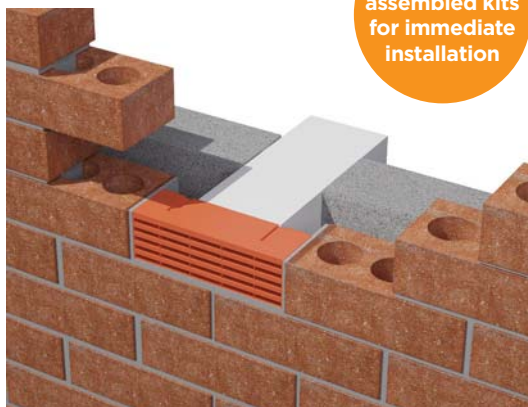
- Bathrooms
- WC cloakrooms
- Utility rooms

Features and benefits:

- Doesn't restrict or interrupt ducting airflow
- Eliminates the requirement for retrospective through wall core drilling



Convenient assembled kits for immediate installation



Product codes

Description	To suit	Product code	Available colours
Round ducting to airbrick adapter set	100mm diameter round rigid ducting	3500 + colour	Terracotta (TE), Buff (BU), Brown (BR), White (WH), Grey (GR) and Black (BL)
500mm extension tube for round ducting to airbrick adapter set	100mm diameter round rigid ducting	3505	White only
Rectangular ducting to airbrick adapter	110 x 54mm rectangular rigid ducting	3510 + colour	Terracotta (TE), Buff (BU), Brown (BR), White (WH), Grey (GR) and Black (BL)



Aero-core anti-draught ventilators

Combination ventilator sets for background venting and heat producing appliances

Use:

- To provide ventilation for heat producing appliances
- To provide background room ventilation
- Ideal solution for refurbishment, remedial work and new build

Excellent
airflow
properties

Features and benefits:

- Offers reduction of draughts and light compared to basic through wall ventilation
- Aesthetically pleasing and a simple to install modular system



Product codes

Aero core anti-draught ventilators

Description	Colour	Equiv area	Product code	Appliance rated input	Size
5" (127mm) Aero core	terracotta/brown	8,400mm ²	ACV10*	23.8kW (81,200Btu)	127mm Dia x 350mm
5" (127mm) Aero core with cowl	terracotta/brown	10,000mm ²	ACV10C*	27kW (92,000Btu)	127mm Dia x 350mm
5" (127mm) Aero core with baffle	terracotta/brown	8,000mm ²	ACV7*	23kW (78,500Btu)	127mm Dia x 350mm
5" (127mm) Aero core with cowl & baffle	terracotta/brown	8,900mm ²	ACV7C*	24.8kW (84,600Btu)	127mm Dia x 350mm
5" (127mm) Aero core high rise	terracotta/brown	5,000mm ²	ACV7HR*	17kW (58,000Btu)	127mm Dia x 350mm
6" (157mm) Aero core	terracotta/brown	11,800mm ²	ACV11*	30.6kW (104,400Btu)	157mm Dia x 350mm
6" (157mm) Aero core with cowl	terracotta/brown	10,600mm ²	ACV11C*	28kW (95,500Btu)	157mm Dia x 350mm
6" (157mm) Aero core with baffle	terracotta/brown	8,900mm ²	ACV9*	24.8kW (84,600Btu)	157mm Dia x 350mm
6" (157mm) Aero core with cowl & baffle	terracotta/brown	9,000mm ²	ACV9C*	25kW (85,350Btu)	157mm Dia x 350mm

*Include colour option (TE = Terracotta, BR = Brown)

Product codes

Acoustic aero core dB anti-draught ventilators

Description	Colour	Equiv area	Product code	Appliance rated input	Size
5" (127mm) Acoustic aero core dB	terracotta/brown	4500mm ²	ACV5dB*	16kW (54,000Btu)	127mm Dia x 350mm
5" (127mm) Acoustic aero core dB with cowl	terracotta/brown	5200mm ²	ACV5CdB*	17.5kW (59,400Btu)	127mm Dia x 350mm
5" (127mm) Acoustic aero core dB high rise	terracotta/brown	3800mm ²	ACV5HRdB*	14.6kW (49,800Btu)	127mm Dia x 350mm
6" (157mm) Acoustic aero core dB	terracotta/brown	7900mm ²	ACV6dB*	22.5kW (76,800Btu)	157mm Dia x 350mm
6" (157mm) Acoustic aero core dB with cowl	terracotta/brown	7400mm ²	ACV6CdB*	21.8kW (74,400Btu)	157mm Dia x 350mm

*Include colour option (TE = Terracotta, BR = Brown)





Aero wall anti-draught ventilators

Combination ventilator sets for background venting and heat producing appliances

Use:

- To provide ventilation for heat producing appliances
- To provide background room ventilation
- For new build, refurbishment and remedial work

Features and benefits:

- Offers reduction of draughts and light compared to basic through wall ventilation
- Aesthetically pleasing and a simple to install modular system
- Excellent airflow properties



Cowl or air brick version available

Product codes

Aero wall anti-draught ventilators

Description	Colour	Equiv area	Product code	Appliance rated input	Size
9 x 3 Aero wall with cowl	terracotta/brown	5100mm ²	ADV93C*	17kW (58,700Btu)	260mm - 365mm
9 x 3 Aero wall with air brick	terracotta/brown	5500mm ²	ADV93AB*	18kW (61,500Btu)	260mm - 365mm
9 x 6 Aero wall with cowl	terracotta/brown	10800mm ²	ADV96C*	28.7kW (98,000Btu)	260mm - 365mm
9 x 6 Aero wall with air brick	terracotta/brown	10000mm ²	ADV96AB*	27kW (92,000Btu)	260mm - 365mm

*Include colour option (TE = Terracotta, BR = Brown)

Product codes

Acoustic aero wall dB anti-draught ventilators

Description	Colour	Equiv	Product code	Appliance rated input	Ave e Dn area	Adjustable
9 x 3 Acoustic aero wall dB with cowl	terracotta/brown	3000mm ²	ADV93CdB*	13kW (44,000Btu)	41dB	260mm-365mm
9 x 3 Acoustic aero wall dB with air brick	terracotta/brown	4000mm ²	ADV93ABdB*	15kW (51,000Btu)	39dB	260mm-365mm
9 x 6 Acoustic aero wall dB with cowl	terracotta/brown	6000mm ²	ADV96CdB*	19kW (64,800Btu)	37dB	260mm-365mm
9 x 6 Acoustic aero wall dB with air brick	terracotta/brown	7550mm ²	ADV96ABdB*	22kW (75,000Btu)	36dB	260mm-365mm

*Include colour option (TE = Terracotta, BR = Brown)

Additional sleeves available to extend sets are available upon request



Internal grilles

Attractive plastic and metal products for sustaining airflow and reducing draughts

Use:

- To cover the inner opening on the cavity sleeve and provide an aesthetically acceptable appearance, while still maintaining a free flow of air

Louvre grilles

A permanently open vent with no flyscreen or closing method

Louvre grilles with flyscreen

A permanently open vent with a fixed flyscreen*

Adjustable (hit and miss) grilles

Can be open or closed with an integral flyscreen*

Features and benefits:

- Aesthetically pleasing
- Excellent airflow properties

*Not suitable for gas appliances

Simple
screw
fixing

9x3 louvre vent



9x6 hit and miss louvre vent



9x9 louvre vent with flyscreen



Product codes

Internal plastic grilles

Description	Colour	Fixing hole dimensions	Overall dimensions	Equivalent area	Product code
6 x 3 louvre 'mini-vent'	White	148mm x 67mm	166mm x 85mm	4100mm ²	1218W
9 x 3 louvre vent	White	242mm x 86mm	260mm x 104mm	7600mm ²	1207W
9 x 6 louvre vent	White	242mm x 152mm	260mm x 170mm	11300mm ²	1211W
9 x 9 louvre vent	White	242mm x 217mm	260mm x 235mm	16500mm ²	1212W
6 x 3 louvre vent with flyscreen	White	148mm x 67mm	166mm x 85mm	2350mm ²	1218FW
9 x 3 louvre vent with flyscreen	White	242mm x 86mm	260mm x 104mm	3750mm ²	1207FW
9 x 6 louvre vent with flyscreen	White	242mm x 152mm	260mm x 170mm	7150mm ²	1211FW
9 x 9 louvre vent with flyscreen	White	242mm x 217mm	260mm x 235mm	8190mm ²	1212FW
6 x 3 hit & miss 'mini-vent'	White	148mm x 67mm	166mm x 85mm	2350mm ²	1219W
9 x 3 hit & miss louvre vent	White	242mm x 86mm	260mm x 104mm	3750mm ²	1208W
9 x 6 hit & miss louvre vent	White	242mm x 152mm	260mm x 170mm	7150mm ²	1209W
9 x 9 hit & miss louvre vent	White	242mm x 217mm	260mm x 235mm	8190mm ²	1210W

Internal metal grilles

Description	Colour	Fixing hole dimensions	Overall dimensions	Equivalent area	Product code
9 x 3 hit & miss vent	Plain aluminium	230mm x 77mm	242mm x 89mm	3741mm ²	1220A
9 x 3 hit & miss vent	Brass anodised	230mm x 77mm	242mm x 89mm	3741mm ²	1220BA
9 x 3 hit & miss vent	Polished brass	230mm x 77mm	242mm x 89mm	3741mm ²	1220PB
9 x 6 hit & miss vent	Plain aluminium	230mm x 153mm	242mm x 165mm	6452mm ²	1221A
9 x 6 hit & miss vent	Brass anodised	230mm x 153mm	242mm x 165mm	6452mm ²	1221BA
9 x 6 hit & miss vent	Polished brass	230mm x 153mm	242mm x 165mm	6452mm ²	1221BP
9 x 9 hit & miss vent	Plain aluminium	230mm x 230mm	242mm x 242mm	11250mm ²	1222A
9 x 9 hit & miss vent	Brass anodised	230mm x 230mm	242mm x 242mm	11250mm ²	1222PB
9 x 9 hit & miss vent	Polished brass	230mm x 230mm	242mm x 242mm	11250mm ²	1222BA
9 x 3 louvre	Plain aluminium	230mm x 77mm	242mm x 89mm	3973mm ²	1223A
9 x 3 louvre	Brass anodised	230mm x 77mm	242mm x 89mm	3973mm ²	1223BA
9 x 3 louvre	Polished brass	230mm x 77mm	242mm x 89mm	3973mm ²	1223PB
9 x 6 louvre	Plain aluminium	230mm x 153mm	242mm x 165mm	7946mm ²	1224A
9 x 6 louvre	Brass anodised	230mm x 153mm	242mm x 165mm	7946mm ²	1224BA
9 x 6 louvre	Polished brass	230mm x 153mm	242mm x 165mm	7946mm ²	1224PB
9 x 9 louvre	Plain aluminium	230mm x 230mm	242mm x 242mm	12770mm ²	1225A
9 x 9 louvre	Brass anodised	230mm x 230mm	242mm x 242mm	12770mm ²	1225BA
9 x 9 louvre	Polished brass	230mm x 230mm	242mm x 242mm	12770mm ²	1225PB
25.2 x 2 return air grille	Plain aluminium	636mm x 48mm	648mm x 60mm	9774mm ²	1226A
25.2 x 2 return air grille	Brass anodised	636mm x 48mm	648mm x 60mm	9774mm ²	1226BA
25.2 x 2 return air grille	Polished brass	636mm x 48mm	648mm x 60mm	9774mm ²	1226PB

Abutment soaker	Page 34
Access panels - 1 hour fire rated beaded frame	Page 27
Access panels - 1 hour fire rated picture frame	Page 26
Access panels - airtight	Page 25
Access panels - deep profile 1 hour fire rated picture frame	Page 27
Access panels - metal non-fire rated beaded frame	Page 26
Access panels - metal non-fire rated picture frame	Page 25
Access panels - plastic	Page 24
Airbricks	Page 42
Airbrick cowls	Page 42
Bonding strips - dry fix GRP	Page 36
Bonding strips - wet fix GRP	Page 34
Cavity closers - Thermo-loc 30 minute fire rated	Page 15
Cavity closers - Thermo-loc plus X (XPS)	Page 14
Cavity closers - Thermo-loc standard (EPS)	Page 13
Cavity sleeves and extension accessories	Page 43
Cavity stop socks - acoustic and fire rated	Page 17
Cavity stops - acoustic and fire rated	Page 16
Cavity trays - arched doors and bulls-eye windows	Page 11
Cavity trays - general horizontal	Page 9
Cavity trays - horizontal (Inter-loc)	Page 7
Cavity trays - horizontal (System 2000)	Page 8
Cavity trays - over lintel	Page 9
Cavity trays - parapet wall	Page 9
Cavity trays - specials	Page 10
Cavity trays - stepped for blockwork	Page 5
Cavity trays - stepped for brickwork	Page 4
Cavity trays - stepped for stonework	Page 6
Corbel roof ventilators	Page 30
Damp proof coursing preformed accessories	Page 20
Dry fix continuous verge for slate and flat tiles	Page 38
Dry fix dry hip system	Page 40
Dry fix dry ridge system	Page 39
Dry fix verge for profiled tiles	Page 37
Ducting to airbrick adapter sets	Page 45

Eaves bird comb filler	Page 33
Eaves felt/membrane support tray	Page 33
Eaves vent protector	Page 33
Gas barrier accessories - corner units	Page 19
Gas barrier accessories - horizontal wall and slab perimeter cavity trays	Page 19
Gas barrier accessories - stop ends and change of level units	Page 19
Gas barrier accessories - threshold protection trays	Page 19
Insulation retaining discs	Page 12
Internal grille ventilators	Page 49
Joining strips - dry fix GRP	Page 36
Joining strips - wet fix GRP	Page 34
Loft doors - 1160 and 1161 metal 60 minute fire rated ranges	Page 23
Loft doors - 1168 plastic push up/drop in range	Page 21
Loft doors - 1169 plastic hinged range	Page 22
Over fascia ventilators - 1m strip	Page 29
Over fascia ventilators - 300mm strip	Page 29
Over fascia ventilators - multi-function systems	Page 29
Radon sump	Page 19
Roll out rafter tray ventilators	Page 30
Roof tile ventilators	Page 32 & 33
Secret gutter - wet fix GRP	Page 34
Slate ventilators and accessories	Page 31
Soffit ventilators - 2.4m strip	Page 28
Soffit ventilators - push-in circular	Page 28
Telescopic underfloor ventilator	Page 43
Telescopic underfloor ventilator - gas sleeve tray	Page 19
Telescopic underfloor ventilator extension accessories	Page 44
Through wall anti-draught ventilator sets - Aero-core	Page 46
Through wall anti-draught ventilator sets - Aero-wall	Page 47
Top hat pipe collars	Page 19
Valley troughs - dry fix GRP	Page 35
Valley troughs - wet fix GRP	Page 34
Weeps	Page 12 & 41



Timloc Building Products

Rawcliffe Road, Goole,
East Yorkshire DN14 6UQ

Fax 01405 720479



Cavity trays



Access panels



**Cavity closers
and stops**



Roofline and above



**Gas barrier and
damp proofing
accessories**



**Under floor and
through wall
ventilation**



Loft access doors



Air leakage solutions

Call: 01405 765567 | Email: sales@timloc.co.uk

www.timloc.co.uk



Every care has been taken to ensure that this Guide is correct at the time of printing, but Timloc Building Products does not accept responsibility for errors or misinterpretation of data. The customer should satisfy themselves that the product/s are suitable for the intended purpose.

Following their policy of continuous product improvement, Timloc Building Products reserve the right to introduce changes to the specification and modifications of design at any time without due notice.

This Guide will be updated and/or reprinted at intervals to incorporate any changes.

The customer should satisfy themselves by enquiring with Timloc Building Products if any changes have been introduced since the publication date.

Published 09.17.