



International Ltd.
dortrend



Lever Handles | Pull handles | Accessories

Lever handles

Witley

Round bar return to door style

Concealed, face-fix, plate and rose versions

All cut-outs and turns available in all versions

19mm and 22mm solid round bar in Aluminium

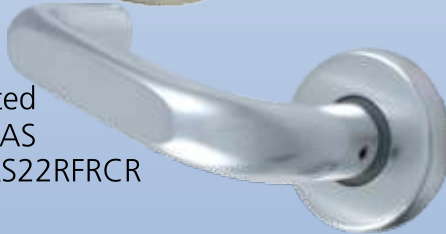
19mm tubing in Stainless Steel

Grade 4 BSEN1906 Clauses 5.7 & 7.3.7

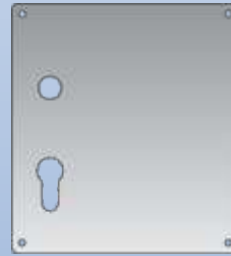


Round bar
style SSS
AS19RCRS
SSS19RCRS

Flat fronted
style AS
AS22RFRRCR



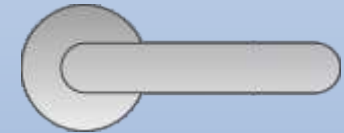
19RNK



19RWK



Or slim rose 53 x 5



19RCR



AS19RCH



AS19RCK



AS19RCL



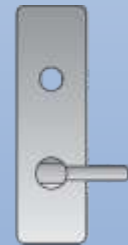
AS19RCE



AS19RCM



AS19RCD



Available in polished and anodised silver aluminium (AS) and satin stainless steel (SSS)

Gold, bronze and colour coated products to special order, please contact our sales office for further details

Sigma

High quality, straight handle, concealed fixing



Long Latch
303-33AS



Lever Lock
303-63AS



Oval
303-64AS



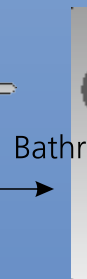
Euro
303-65AS



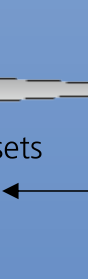
inside



303-83



outside



303-83D

Bathroom sets



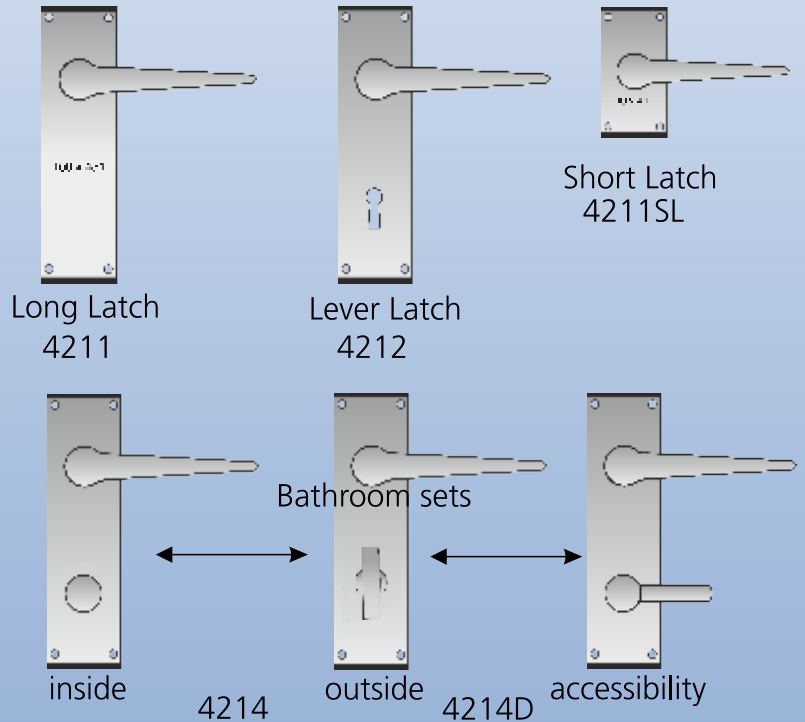
accessibility

Available in polished and anodised silver aluminium (AS). Gold, bronze and colour coated products to special order, please contact our sales office for further details

Lever handles

Shirley

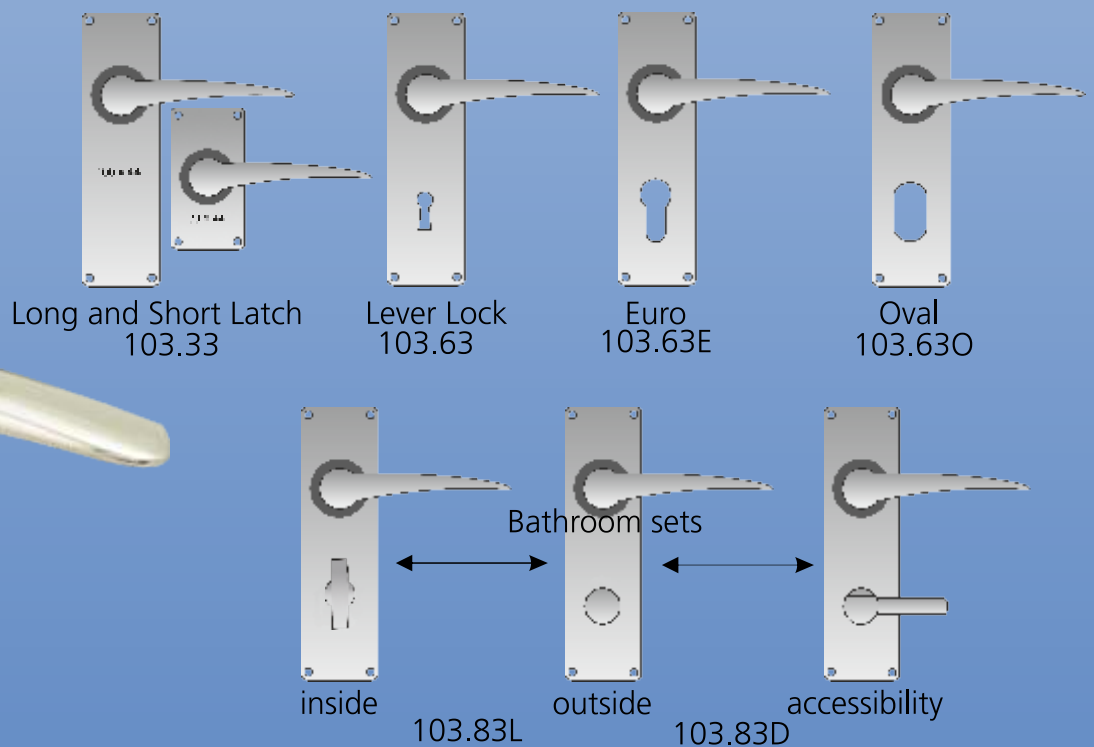
Straight handle, face fixing, plastic end caps



Available in polished and anodised silver aluminium (AS). Gold, bronze and colour coated products to special order. Please contact our sales office for further details

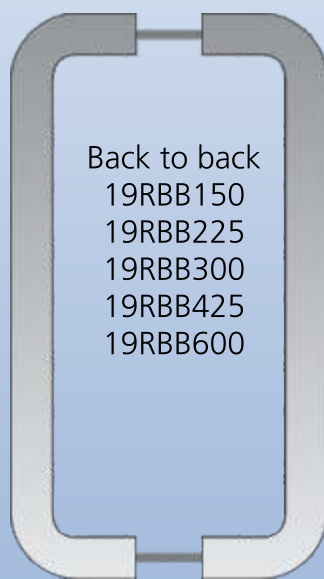
Astral

Curved handle, face fixing



Available in polished and anodised silver aluminium (AS). Gold, bronze and colour coated products to special order. Please contact our sales office for further details

Pull handles



Back to back
19RBB150
19RBB225
19RBB300
19RBB425
19RBB600

10mm 6mm 3mm



Bolt through

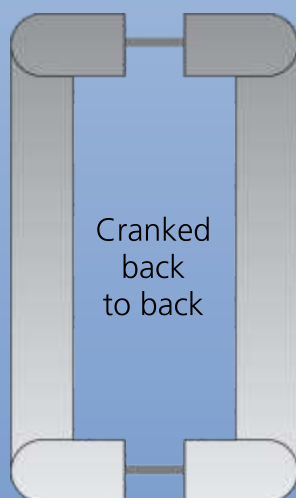


Available in 19mm and 22mm diameter.

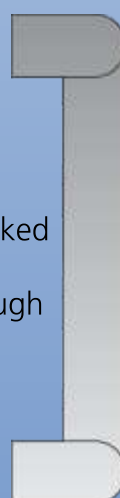
Materials - Polished anodised aluminium, satin stainless steel.

Standard Lengths - Round types 150, 225, 300, 425, 600

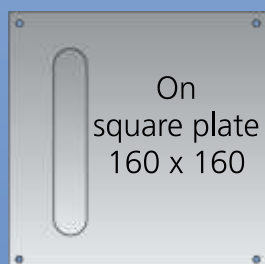
Cranked types 150, 225, 300, 425, 600



Cranked
back
to back

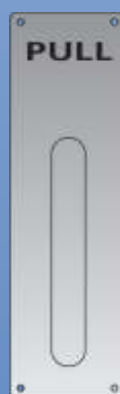


Cranked
bolt-
through



On
square plate
160 x 160

19RFF12



On engraved plate

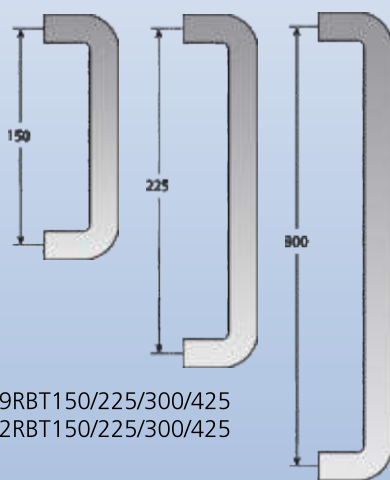


150
225
300
425
600

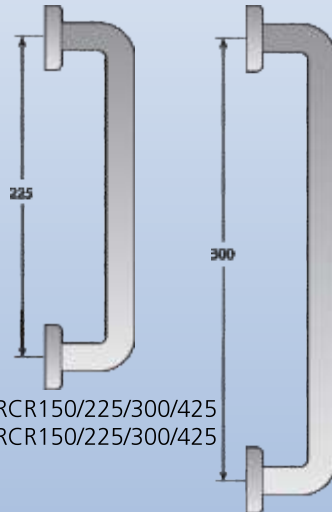
Plate to
cust.
reqt.

Available in polished aluminium (AS), satin stainless steel (SSS). Coloured anodised products to special order.

Pull handles

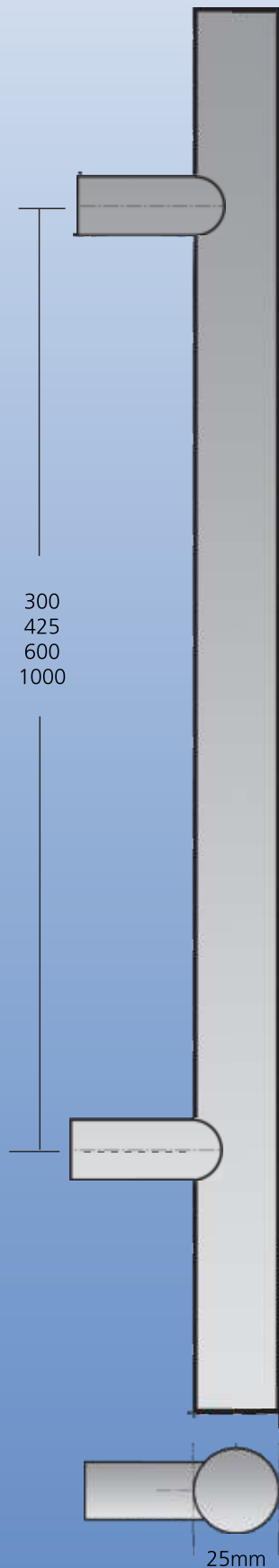


19RBT150/225/300/425
22RBT150/225/300/425



19RCR150/225/300/425
22RCR150/225/300/425

with concealed rose



300
425
600
1000

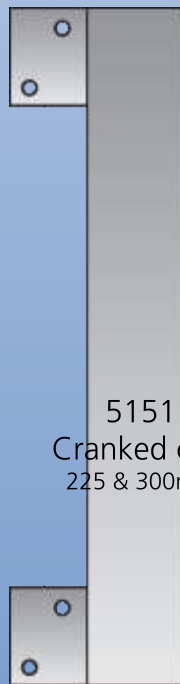
Pillar Entrance
Pull Handle



22RF150AS
22RF225AS
22RF300AS



591
Bow handle
150mm
or 180mm



5151
Cranked cast
225 & 300mm



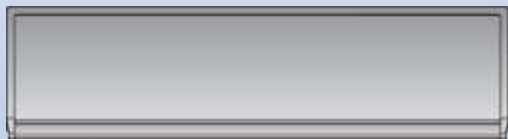
4218
Flush pull
100 x 40mm

Witley pull handles are also
available in flat fronted format
in above sizes only

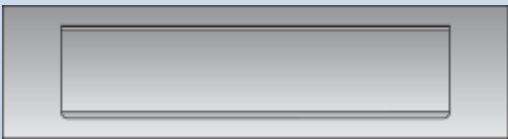
Available in polished aluminium (AS), satin stainless steel (SSS). Coloured anodised products to special order.

Accessories

Letter plates



406
(250 x 75mm or 300 x 75mm or 350 x 75)

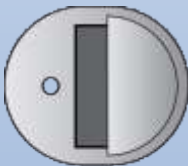


408
(250 x 75mm or 300 x 75mm)

Door stops



DS19 50mm
DS20 75mm

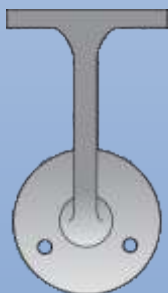


DS11

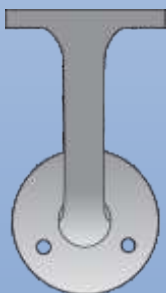


DS12

Hand rail brackets



683
63mm or 75mm

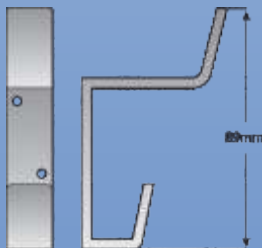


3578
63mm or 75mm

Coat hooks



602



600

Wardrobe hook

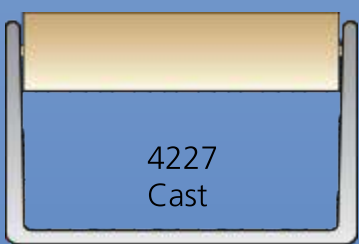


651

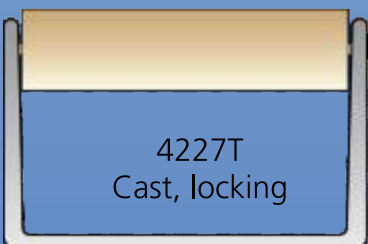
Toilet roll holders



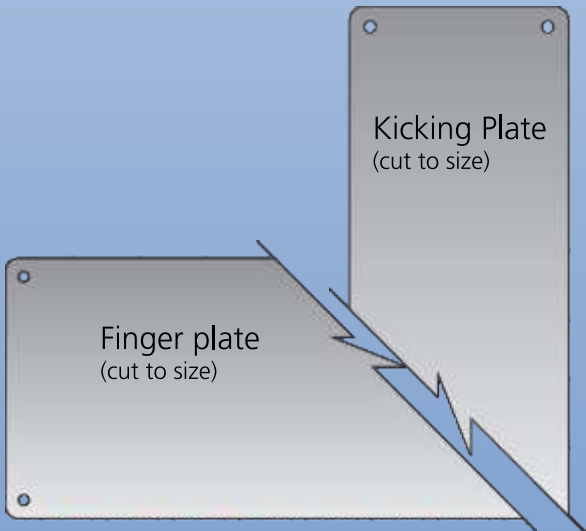
672



4227
Cast



4227T
Cast, locking

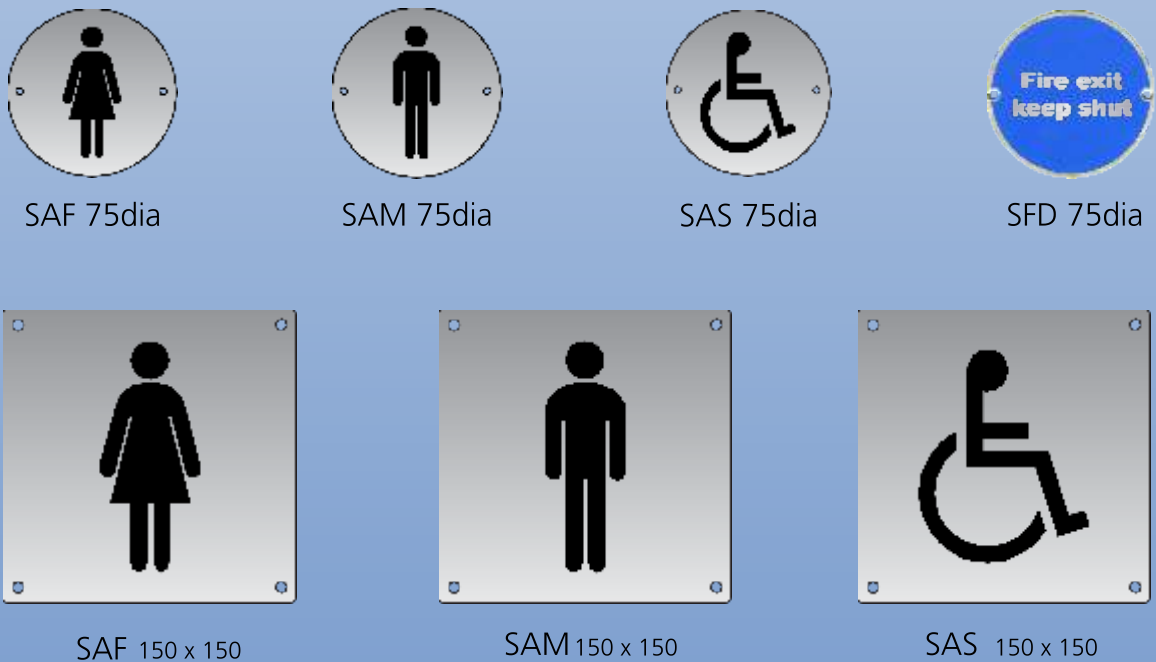


Accessories

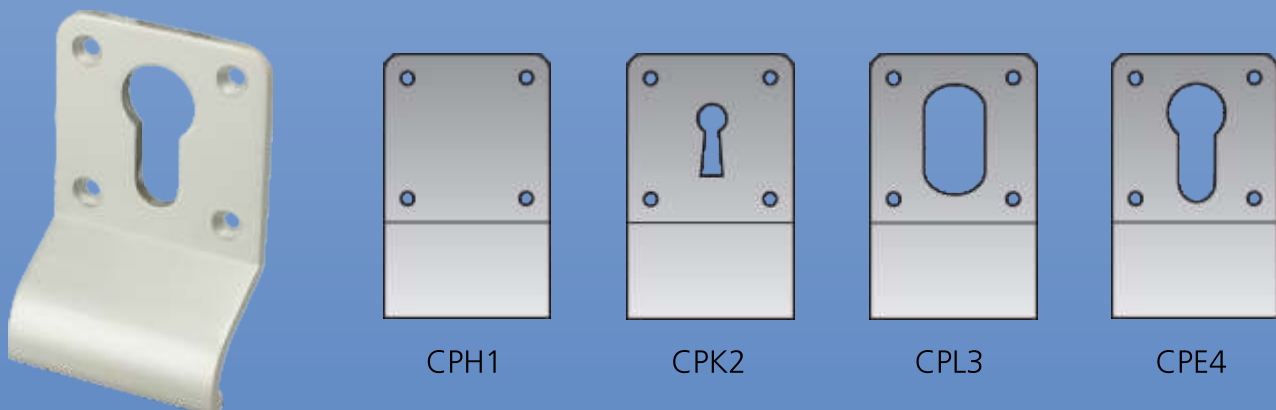
Turns and escutcheons



Screen printed signs



Cylinder Pulls



Dortrend has taken special care in the selection of materials and the processes that turn these materials into products that remain looking as new and fit for their purpose for years.

We are consistently striving to develop and improve our products therefore some product specifications may vary.

Caring for Anodised Aluminium and Stainless Steel.

These products are manufactured from high quality HE9 aluminium or 304 stainless steel. Most of these items require surface treatment to inhibit corrosion, and whilst a product may remain mechanically sound for a lifetime, its appearance may deteriorate more quickly, mainly due to the conditions of exposure in service. Dust is one of the main reasons for corrosion, either acid or alkaline. Salt in coastal atmospheres is also very corrosive. We recommend, therefore, that our products be kept clean by frequent dusting, and an occasional wipe with warm soapy water. This is far more effective than the more drastic treatment with polishes, some of which are very abrasive and can damage the surface.

Our technical representatives are always available to offer advice and any technical information you may require.

All dimensions, weights etc. given in this brochure are approximate.

Dortrend International Ltd. are continually refining and improving their product range, and therefore reserve the right to alter specifications without prior notice, where this proves necessary for technical or other reasons.

Any items ordered from this catalogue are subject to our standard terms and conditions of sale, which are printed in our current price list, a copy of which is available on request.

Finishes

- AS Polished and anodised aluminium
- TC Touchclean® anti-microbial coating
- PC Polyester powder coating
- SSS Satin polished stainless steel



TC is a post production coating with powerful anti-microbial properties. It helps stop the spread of bacteria and viruses by hand to hand contact. For more information visit our web site or ask our sales office.



dortrend
International Ltd.

Dortrend International Ltd
Riverside Business Centre
Worcester Road
Stourport-on-Severn
Worcestershire
DY13 9BZ

Tel: 01299 827837
Fax: 01299 827094

email: sales@dortrend.co.uk
web: www.dortrend.co.uk