



# The Twyford Showering Collection

# The luxury of greater choice and greater service

From market leading, bathroom transforming ideas to the latest on-trend innovations, Twyford can meet every individual taste and every customer budget. In every range, you'll find clever technology to enhance and improve bathroom functionality, and 160 years of ingenuity is your reassurance of unrivalled support.

## Clever thinking

Twyford are constantly introducing innovative, market leading ideas to make the bathroom experience even better - like Proclean glass coating and spring loaded buffers.

Clever technology, smart design features.

## Great experience

Twyford have been leaders in bathroom design for over 160 years, with a reputation for guaranteed quality and superb performance along the way.

## Experienced team

Twyford continue delivering - from design and production to marketing and merchandising. From customer service to after sales, we're all dedicated to delivering the very best in products, service and support.

## Good looks

Twyford bathroom ranges don't just perform superbly, they look terrific too. Form and function combine to create style statements for the modern bathroom. Practical and durable, smart and stunning. The perfect solution, every time.

# Contents

## Shower enclosures

Geo Pivot Door	05
Geo Sliding Door	06
Geo Quadrant	07
Geo Corner Entry	08
Geo Bath Screen	09

## Shower Trays

10-11

## Specifications

12-18





# Welcome to Twyford Geo showering

The bathroom should be a reflection of both practicality and style. The Twyford Geo series provides a core range of framed shower enclosure products which deliver clear space saving solutions and outstanding value. Excelling with its simple, stylish and practical design flexibility.

Offering quality and practicality in one enhanced solution.



## Profile Handle Design

Minimalistic profile handle design on all sliding partitions, providing easy cleaning and increased stability.



## ProClean Glass Coating

ProClean glass coating creates surface tension, making the glass easier to clean and also reducing the build up of water marks, limescale and soap scum.



## Spring Loaded Buffers

Providing an enhanced cushioning effect for improved acoustics when opening and closing the shower door as well as smoother action when using the shower enclosure.



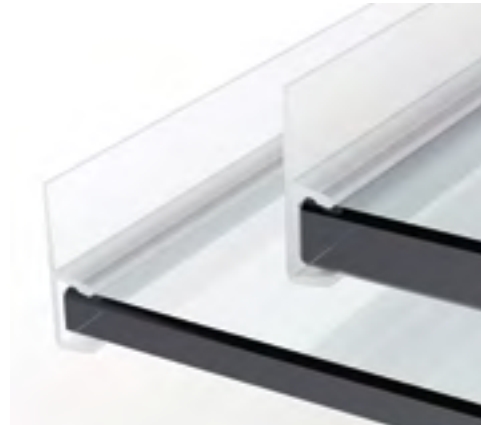
## Roller System

Enhanced traction across the upper and lower profiles of the shower enclosure, delivering improved acoustic benefits and a smoother door glide.



## Reversibility

Doors and panels can be reversed for both left hand and right hand applications.



## Glass Thickness

6mm glass thickness as standard across all enclosures with 8mm upgrade available on sliding doors.



The Pivot Door is ideal where space is available for an outward opening door, and can be used in a recess or with a Side Panel. It features a robust rise and fall pivoting system which adds rigidity and durability to the door opening.

Available in the following sizes: Geo Pivot Door 760mm, 800mm, 900mm

Side Panel 760mm, 800mm, 900mm



Geo Pivot door with Side Panel and tray

Geo Sliding Door

The Sliding Door enclosure provides a very generous showering space. It can be used in a recess or with the addition of a Side Panel it can be positioned in a corner.

Available in the following sizes: Geo Sliding Door 6mm Glass Thickness 1000mm, 1100mm, 1200mm, 1400mm, 1500mm, 1600mm, 1700mm

Geo Sliding Door 8mm Glass Thickness 1200mm, 1400mm, 1500mm

Side Panel 760mm, 800mm, 900mm



Geo Sliding door and tray

Geo Quadrant



The Quadrant enclosure provides a distinctive and welcoming corner shape and creates a good size showering area without taking up too much room. Curved glass sliding doors are accessible from the front.

Available in the following sizes: Geo Quadrant 800mm, 900mm



Geo Quadrant and tray



Geo Corner Entry

Sliding corner entry access doors provide extra showering space and makes the Corner Entry enclosure an excellent alternative to a Quadrant.

Available in the following sizes: Geo Corner Entry 800mm, 900mm



Geo Corner Entry and tray

Geo Bath Screen

Designed for an over bath shower. With its rise and fall hinge, the single panel Bath Screen hinges through 180° for easy access and cleaning. this screen can be fitted onto either a left or right hand wall.

Available in the following size: Geo Bath Screen 1500mm x 800mm



Geo Bath Screen and Aspect 1700 x 700mm bath with Endurance side panel and end panel

# Twyford Shower Trays

## Key features

- ABS acrylic capped polyconcrete - strong, durable quality and excellent performance
- Low profile, simple and stylish design in-keeping with current trends
- 90mm waste hole (waste to be ordered separately)
- Twyford trays can be installed flat to floor or with legs and panels
- Leg and panel kits to be ordered separately
- All popular sizes available, all Twyford door sizes covered
- Upstand and flat top versions available



### Square - 4 Upstand Trays

Sizes available: 760mm, 800mm and 900mm



### Square - Flat Top Trays

Sizes available: 760mm, 800mm, 900mm and 1000mm



### Rectangle - 4 Upstand Trays

Sizes available: 900 x 760mm, 1000 x 760mm, 1000 x 800mm, 1200 x 760mm, 1200 x 800mm, 1400 x 900mm, 1700 x 750mm



### Rectangle - Flat Top Trays

Sizes available: 900 x 760mm, 1000 x 760mm, 1000 x 800mm, 1100 x 800mm, 1200 x 760mm, 1200 x 800mm, 1200 x 900mm, 1400 x 900mm, 1500 x 800mm, 1600 x 800mm, 1700 x 700mm, 1700 x 750mm and 1700 x 800mm



### Quadrant - 2 Upstand Trays

Sizes available: 800mm and 900mm



### Quadrant - Flat Top Trays

Sizes available: 800mm, 900mm and 1000mm



### 90mm High Flow Waste

Suitable for all Twyford trays, and enabling water to flow away at over 32 litres a minute. An offset elbow assists installation, and there's a quick release inner unit for easy cleaning. Available separately in a chrome finish.



Flexi waste pipe.

Flexi upstand seal kit.



Quadrant legset and panel kit.

### Shower Tray Accessories



# Very useful specifications

The following pages have the full specifications for all the products shown in this brochure. So there's everything you need to plan your installation and make the most of the space you have available.



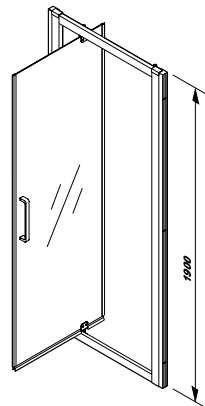
Twyford's Proclean is a protective glass coating which aids easy cleaning of showering enclosures by preventing build-up of limescale, soap scum, stains and dirt.



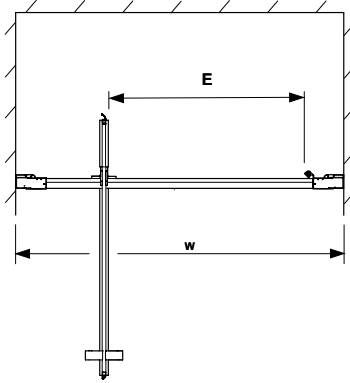
## Pivot Door

PART NUMBER DESCRIPTION 

- 560.105.00.2 760mm Pivot Door, LH or RH
- 560.115.00.2 800mm Pivot Door, LH or RH
- 560.125.00.2 900mm Pivot Door, LH or RH



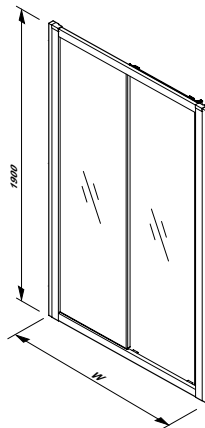
Part Number	Description	W Nom Width mm	E Entry Width mm	W Adjustment Range mm
560.105.00.2	Pivot Door 760mm	760	447	710-760
560.115.00.2	Pivot Door 800mm	800	487	750-800
560.125.00.2	Pivot Door 900mm	900	587	850-900



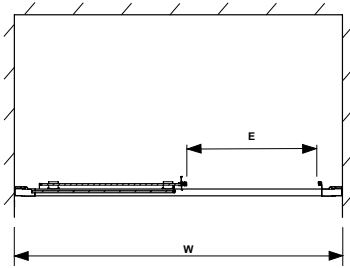
## Sliding Door (6mm)

PART NUMBER DESCRIPTION 

- 560.133.00.2 1000mm Sliding Door, LH or RH
- 560.143.00.2 1100mm Sliding Door, L H or RH
- 560.153.00.2 1200mm Sliding Door, LH or RH
- 560.163.00.2 1400mm Sliding Door, LH or RH
- 560.173.00.2 1500mm Sliding Door, LH or RH
- 560.183.00.2 1600mm Sliding Door, LH or RH
- 560.193.00.2 1700mm Sliding Door, LH or RH



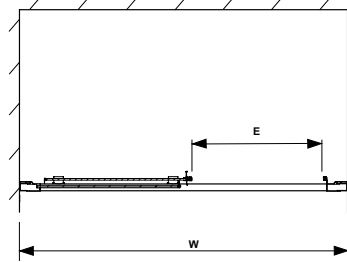
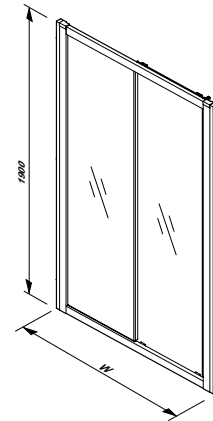
Part Number	Description	W Nom Width mm	E Entry Width mm	W Adjustment Range mm
560.133.00.2	Sliding Door 1000mm	1000	382	950-1000
560.143.00.2	Sliding Door 1100mm	1100	432	1050-1100
560.153.00.2	Sliding Door 1200mm	1200	482	1150-1200
560.163.00.2	Sliding Door 1400mm	1400	582	1350-1400
560.173.00.2	Sliding Door 1500mm	1500	630	1450-1500
560.183.00.2	Sliding Door 1600mm	1600	683	1550-1600
560.193.00.2	Sliding Door 1700mm	1700	733	1650-1700



## Sliding Door (8mm)

**PART NUMBER** **DESCRIPTION** 

560.154.00.2	1200mm Sliding Door, LH or RH
560.164.00.2	1400mm Sliding Door, LH or RH
560.174.00.2	1500mm Sliding Door, LH or RH

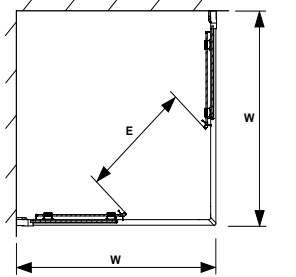
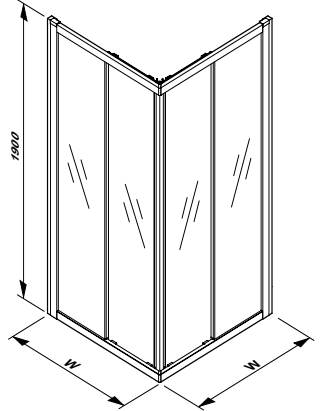


Part Number	Description	W Nom Width mm	E Entry Width mm	W Adjustment Range mm
560.154.00.2	Sliding Door 1200mm	1200	482	1150-1200
560.164.00.2	Sliding Door 1400mm	1400	582	1350-1400
560.174.00.2	Sliding Door 1500mm	1500	630	1450-1500

## Corner Entry

**PART NUMBER** **DESCRIPTION** 

560.112.00.2	800mm Corner Entry
560.122.00.2	900mm Corner Entry

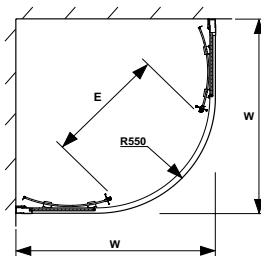
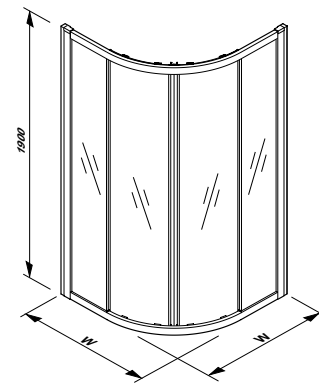


Part Number	Description	W Nom Width mm	E Entry Width mm	W Adjustment Range mm
560.112.00.2	Corner Entry 800 x 800mm	800	431	775-800
560.122.00.2	Corner Entry 900 x 900mm	900	502	875-900

## Quadrant

**PART NUMBER** **DESCRIPTION** 

560.111.00.2	Quadrant 800 x 800mm
560.121.00.2	Quadrant 900 x 900mm

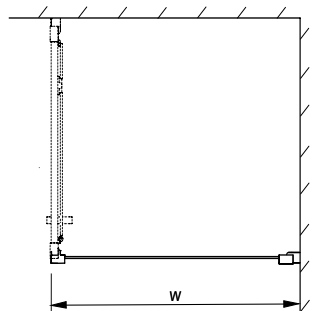
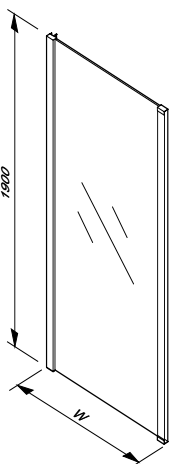


Part Number	Description	W Nom Width mm	E Entry Width mm	W Adjustment Range mm
560.111.00.2	Quadrant Door 800 x 800mm	800	410	775-800
560.121.00.2	Quadrant Door 900 x 900mm	900	562	875-900

## Side Panel

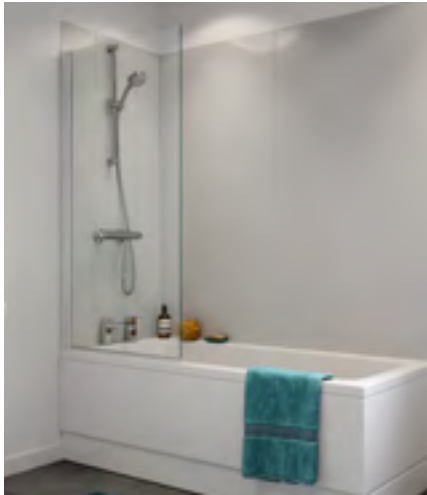
**PART NUMBER** **DESCRIPTION** 

560.107.00.2	760mm Side Panel, LH or RH
560.117.00.2	800mm Side Panel, LH or RH
560.127.00.2	900mm Side Panel, LH or RH



Part Number	Description	W Nom Width mm	W Adjustment Range mm
560.107.00.2	Side Panel 760mm	760	735 - 760
560.117.00.2	Side Panel 800mm	800	775 - 800
560.127.00.2	Side Panel 900mm	900	875 - 900

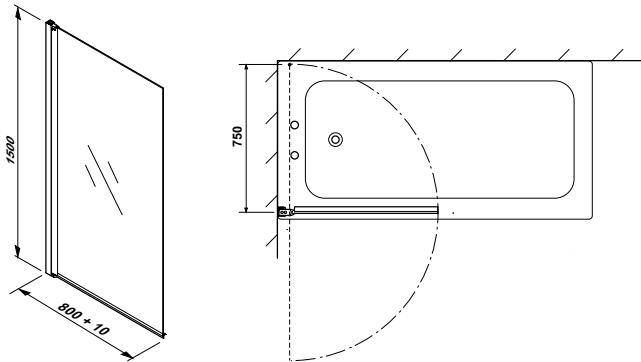




Single Panel Bath Screen

PART NUMBER DESCRIPTION 

560.118.00.2 1500 x 800mm Single Panel Bath Screen LH or RH

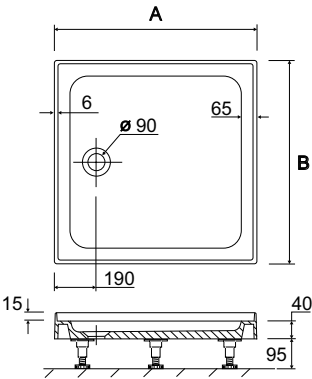


Square - 4 Upstand Trays



Part Number	Description	A	B
TR6211WH	760mm x 760mm 4 Upstand Tray	770	770
TR6221WH	800mm x 800mm 4 Upstand Tray	810	810
TR6231WH	900mm x 900mm 4 Upstand Tray	910	910

Note leg/panel kit and waste MUST be ordered separately  
See shower tray accessories for details

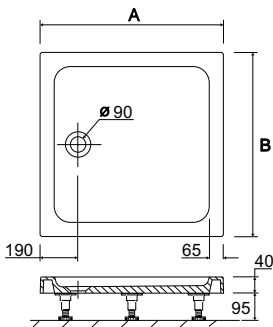


Square - Flat Top Trays



Part Number	Description	A	B
TR6111WH	760mm x 760mm Flat Top Tray	770	770
TR6121WH	800mm x 800mm Flat Top Tray	810	810
TR6131WH	900mm x 900mm Flat Top Tray	910	910
TR6141WH	1000mm x 1000mm Flat Top Tray	1010	1010

Note leg/panel kit and waste MUST be ordered separately  
See shower tray accessories for details

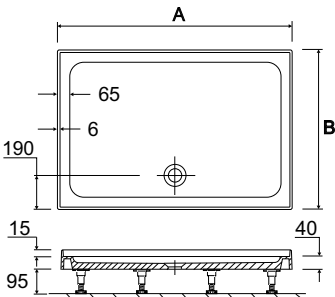


Rectangle - 4 Upstand Trays



Part Number	Description	A	B
TR6431WH	900mm x 760mm 4 Upstand Tray	910	770
TR6441WH	1000mm x 760mm 4 Upstand Tray	1010	770
TR6442WH	1000mm x 800mm 4 Upstand Tray	1010	810
TR6461WH	1200mm x 760mm 4 Upstand Tray	1210	770
TR6462WH	1200mm x 800mm 4 Upstand Tray	1210	810
TR6481WH	1400mm x 900mm 4 Upstand Tray	1410	910
TR6401WH	1700mm x 750mm 4 Upstand Tray	1710	760

Note leg/panel kit and waste MUST be ordered separately  
See shower tray accessories for details

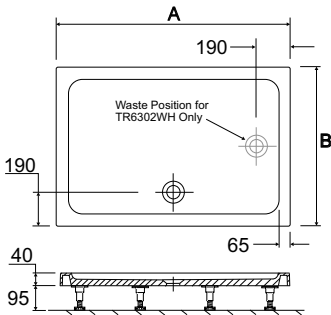


Rectangle - Flat Top Trays



Part Number	Description	A	B
TR6331WH	900mm x 760mm Flat Top Tray	910	770
TR6341WH	1000mm x 760mm Flat Top Tray	1010	770
TR6342WH	1000mm x 800mm Flat Top Tray	1010	810
TR6351WH	1100mm x 800mm Flat Top Tray	1110	810
TR6361WH	1200mm x 760mm Flat Top Tray	1210	770
TR6362WH	1200mm x 800mm Flat Top Tray	1210	810
TR6463WH	1200mm x 900mm Flat Top Tray	1210	910
TR6381WH	1400mm x 900mm Flat Top Tray	1410	910
TR6391WH	1500mm x 800mm Flat Top Tray	1510	810
TR6301WH	1600mm x 800mm Flat Top Tray	1610	810
TR6302WH	1700mm x 700mm Flat Top Tray	1710	710
TR6303WH	1700mm x 750mm Flat Top Tray	1710	760
TR6304WH	1700mm x 800mm Flat Top Tray	1710	810

Note leg/panel kit and waste MUST be ordered separately  
See shower tray accessories for details

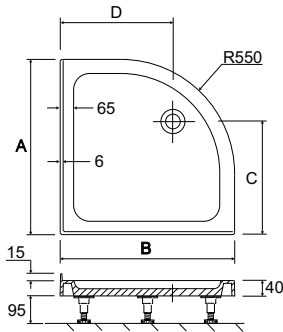


Quadrant - 2 Upright Trays



Part Number	Description	A	B	C	D
TR6621WH	800mm Quadrant 2 Upright Tray	810	810	500	500
TR6631WH	900mm Quadrant 2 Upright Tray	910	910	600	600

Note leg/panel kit and waste MUST be ordered separately  
See shower tray accessories for details

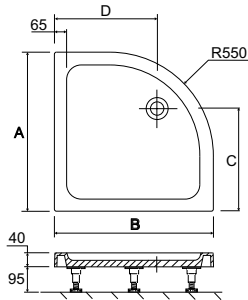


Quadrant - Flat Top Trays



Part Number	Description	A	B	C	D
TR6521WH	800mm Quadrant Flat Top Tray	810	810	500	500
TR6531WH	900mm Quadrant Flat Top Tray	910	910	600	600
TR6541WH	1000mm Quadrant Flat Top Tray	1010	1010	700	700

Note leg/panel kit and waste MUST be ordered separately  
See shower tray accessories for details



Shower Tray Accessories



Part Number	Description
TR6012WH	Standard Legset & Panel Kit (For Use With Trays Up To 1200mm)
TR6013WH	Extension Legset & Panel Pack (For Use With Above For Trays Over 1200mm)
TR6011WH	Quadrant Legset & Panel Kit (including offset)
SF8888XX	Twyford 90mm High Flow Waste Kit
TR6014WH	Flexible Upright/Seal Kit (2800mm Long)
TR6015WH	Flexible Waste Pipe (1200mm Long)

Note leg/panel kit and waste MUST be ordered separately

Quadrant leg set and panel kit

It's all in the planning

When it comes to planning, precision is everything.

Our dedication to your specification ensures that we have every angle covered, from the total flexibility and design freedom we bring to every application to the smart installation features and compact options that transform any bathroom space.

Our technical department constantly monitor changes in legislation and building regulations to ensure our products are fully compliant and meet the Code for Sustainable Homes (CSH).

Our 160 years' experience and unrivalled design heritage is your reassurance that every detail will be right, whether you have special requirements, accessibility issues or unusual room sizes to contend with.

Our exceptionally supportive service also includes useful tools like Specmaster™, our online specification programme created to help with design logistics.

For product codes and pricing, please refer to the corresponding Price List (RRP)

Call 0800 007 5133 or email [twyford@web-response.co.uk](mailto:twyford@web-response.co.uk) to order a price list/brochure.

# Cleaning and Maintenance

## Shower enclosures (excluding Proclean)

Shower enclosures should be cleaned after every use with a squeegee, soft cloth or chamois leather - but not cleaning agents - to wipe off any water droplets. Residue left by bodycare products (liquid soap, shampoo, shower gel) can also accumulate so please rinse them off. Follow the same routine with sliding door track fittings.

Don't allow limescale to build up - especially in hard water areas. If a stubborn limescale build up can be cleaned with a mixture of 50:50 vinegar and water - but make sure all vinegar is rinsed off completely. Never use strong detergents or cleaning agents.

## Proclean glass

Cleaning Proclean glass could not be easier, simply use a damp cloth.



## Shower trays

Clean with warm soapy water or mild detergent after each use, and wipe dry with a clean cloth - not gritty abrasive cleaners. If limescale or fine scratches become a problem, apply T-cut with a damp cloth, then polish it off. The waste trap should be removed and cleaned regularly, ensuring that any debris is removed.

# Key Contacts

## Registered office

Geberit Sales Ltd, Geberit House, Edgehill Drive,  
Warwick, Warwickshire, CV34 6NH

## Website

[www.twyfordbathrooms.com](http://www.twyfordbathrooms.com)

## General enquiries

Tel: 01926 516 800 Fax: 01926 400 101 Email: [enquiries@geberit.co.uk](mailto:enquiries@geberit.co.uk)

## Twyford customer support (orders, delivery, price and availability)

Tel: 01926 516 800 Fax: 01926 400 101  
Email: [enquiries@geberit.co.uk](mailto:enquiries@geberit.co.uk)

## Twyford technical services (product issues and technical support)

Tel: 01926 516 800 Fax: 01926 400 101  
Email: [technical@geberit.co.uk](mailto:technical@geberit.co.uk)

## To order a brochure

Tel: 0800 007 5133 Email: [twyford@web-response.co.uk](mailto:twyford@web-response.co.uk)



# Our guarantee

**Lifetime** Shower enclosures and bath screens, Twyford shower trays.

**2 years** Accessories and fittings, all wooden products, bath panels, plastic and metal fittings including seats, taps (excluding those listed under 5 year guarantee), cistern fittings, electronic components and ceramic bathroom accessories.

This guarantee covers products manufactured or supplied by Twyford Bathrooms under the Twyford brand name and installed in the United Kingdom and the Republic of Ireland. Should a claim be made, under the guarantee, we ask that the following conditions are met:

- Proof of purchase should be supplied at the time of the claim, if there is no proof of purchase supplied then the claim will be refused.
- Product should have been fitted in accordance with our installation instructions, UK Water Regulations 1999 and general good plumbing practice.
- We need to ensure that the product has been maintained and cared for in accordance with our Cleaning and Maintenance Instructions. Note mildew, limescale effects and corrosion are not covered under the guarantee.
- We cannot accept responsibility for the failure of a product if it has been modified, misused, neglected or wilfully or accidentally damaged. This also includes the general effects of wear and tear through usage.
- We must be given reasonable opportunity to inspect the product in the installed situation, if removed the product must not be destroyed but should be retained for inspection. Photographic evidence of the product in the installed situation may be requested.

- If our on-site investigation determines the reported issue is not a manufacturing fault or a materials defect, a call out charge may be applied. This will be advised at the time of your claim.
- Our policy is one of continuous improvement. If the product has failed under the terms of the guarantee and a replacement is offered, but identical goods are no longer available, a mutual agreement will be sought.
- This guarantee applies only to the single product in question and not to the whole bathroom suite. This guarantee does not extend to cover consequential loss or damage which could not be reasonably foreseen at the time the product was purchased.

For further information contact our Customer Services Team on:

**T: 01926 516 800**

**E: [enquiries@geberit.co.uk](mailto:enquiries@geberit.co.uk)**

**F: 01926 400 101**

This guarantee is effective for all our products under the aforementioned parameters and is non-transferable. It is offered to customers acquiring our products as consumers, not in the course of a trade or business. This guarantee does not in any way affect the statutory or other rights of a consumer.



Visit **[www.twyfordbathrooms.com](http://www.twyfordbathrooms.com)**



Registered office: Geberit Sales Ltd, Geberit House,  
Edgehill Drive, Warwick, Warwickshire CV34 6NH  
T: 01926 516800 F: 01926 400101  
[www.twyfordbathrooms.com](http://www.twyfordbathrooms.com) Email: [enquiries@geberit.co.uk](mailto:enquiries@geberit.co.uk)

Technical helpline: T: 01926 516800 F: 01926 400101  
Email: [technical@geberit.co.uk](mailto:technical@geberit.co.uk)

Part of the Geberit Group  
Ref: TWYTC/05/19

Whilst every care has been taken to ensure that the information included in this document was accurate at the time of printing, we reserve the right to change product specifications at any time without prior notice. The photographs reproduced in this publication are within the constraints of the printing process and are not to be used for matching purposes. All photographs are used for approximate representation only and may not show the actual products on offer. E&OE.