



# SIKALASTIC<sup>®</sup> RAPID SOLUTIONS FOR BALCONIES AND WALKWAYS

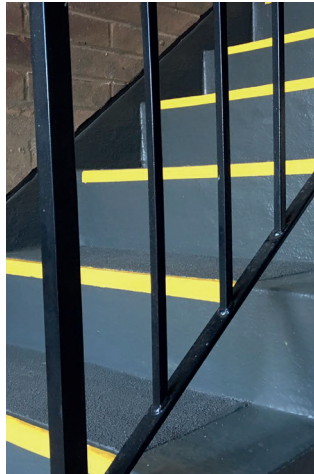
SIKALASTIC<sup>®</sup>  
**RAPID**

**Sarnafil**<sup>®</sup>





# RAPID TRAFFICABLE SYSTEMS FOR WALKWAYS, BALCONIES AND TERRACES



The Sikalastic® Rapid range has been developed to be used in situations where the contractor's access to the area may be restricted, and a fast application is desirable. A typical scenario may be a communal walkway or stairwell within a housing block, frequently seen in urban areas, where residents require access to their home within an acceptable time period.

The Sikalastic® Rapid range is based on PMMA (polymethyl methacrylate) technology, which offers the fastest cure of any liquid applied membrane in the market, even in lower temperatures. The product has the ability to cure in 30-40 minutes and can be accelerated if required.

The systems are compatible with almost all substrates, are exceptionally hard wearing, and are proven to withstand the demands of the walkway, balcony and terrace environment, giving reliable waterproofing and protection, in combination with functional surfacing.

Decorative options are available with the use of Sikalastic® Rapid Clear Sealer and coloured quartz.

## WATERPROOFING OF STAIRS AND STAIRWELLS

Sikalastic® Rapid Structured Coating RA is available for areas requiring a more heavy duty finish, such as stairwells and access ramps. When used with a proprietary edge nosing, it provides a long term protective wearing solution.

**SIKALASTIC®**  
**RAPID**

## SIMPLE WET-ON-WET APPLICATION

This means that the polyester reinforcing fleece is first saturated with Sikalastic® Rapid-721 resin, bonding the membrane to the substrate, with the surface layer then applied onto the bonding coat whilst still wet, so forming a single seamless membrane of uniform thickness. The advantage of this type of application is that on balconies and terraces, a one day application may be possible, because there is no need to wait for drying between coats.

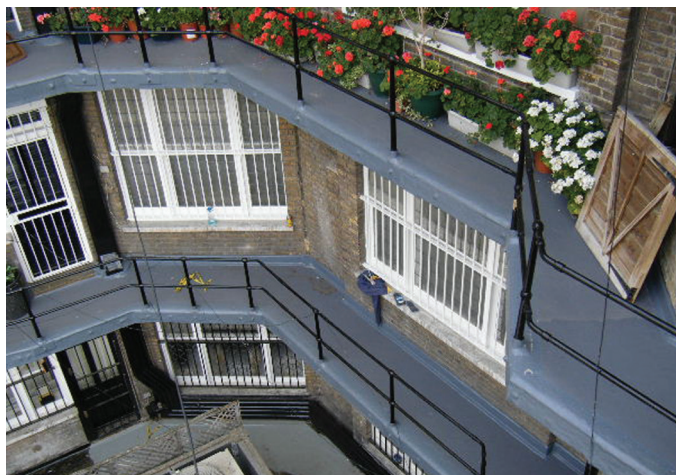
The polyester reinforcing fleece provides the membrane with exceptional tensile strength to withstand thermal movement in the substrate.

### SYSTEM FEATURES:

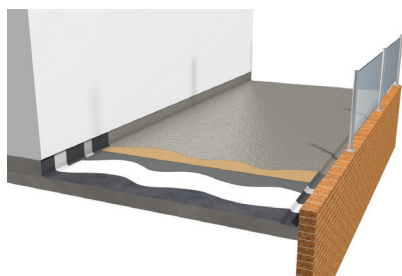
- **Rapid Curing** - allowing areas to be treated quickly, minimising time on site
- **Access Restrictions Minimised** - materials achieve full mechanical properties exceptionally quickly, and can be trafficked shortly after installation
- **Can Be Applied At Very Low Temperatures** - with an ability to still achieve a rapid cure
- **Flexible and Crack-Bridging** - even at extreme sub-zero temperatures
- **Heavy-Duty** - wearing layer option for foot traffic
- **Cold Applied** - eliminating the risk of fire on an occupied building during installation
- **Guarantees** - up to 20 year guarantee available
- **BBA Accreditation** (Certificate No: 16/5295)



# SIKALASTIC® RAPID RANGE



## SIKALASTIC® RAPID TRAFFICABLE (WEARING)

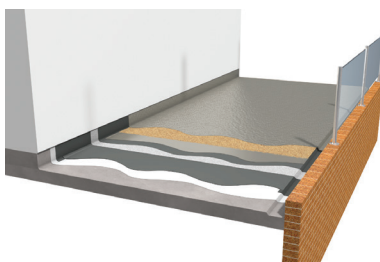


System build up:

- Sikalastic® Rapid Pigmented Sealer
- Sikalastic® Rapid Aggregate
- Sikalastic® Rapid Levelling Mortar
- Sikalastic® Rapid-721 Thixo and Sikalastic® Rapid Fleece 110 (detail areas)
- Substrate\*

\*Prime as required

## SIKALASTIC® RAPID TRAFFICABLE (WATERPROOFING & WEARING)

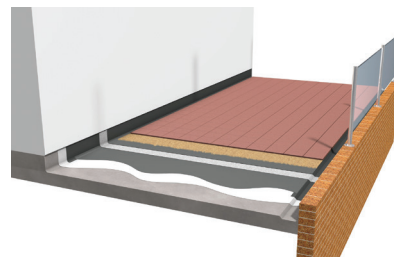


System build up:

- Sikalastic® Rapid Pigmented Sealer
- Sikalastic® Rapid Aggregate
- Sikalastic® Rapid Levelling Mortar
- Sikalastic® Rapid-721 and Sikalastic® Rapid Fleece 110
- Sikalastic® Rapid-721 Thixo and Sikalastic® Rapid Fleece 110 (detail areas)
- Substrate\*

\*Prime as required

## SIKALASTIC® RAPID TRAFFICABLE (WATERPROOFING & BURIED)



System build up:

- Tiles
- Sikalastic® Rapid Aggregate
- Sikalastic® Rapid-721
- Sikalastic® Rapid-721 and Sikalastic® Rapid Fleece 110
- Sikalastic® Rapid-721 Thixo and Sikalastic® Rapid Fleece 110 (detail areas)
- Substrate\*

\*Prime as required

SIKALASTIC®  
**RAPID**

# TRAINING ACADEMY



We are dedicated to provide high quality training to help roofers reach their potential and ensure our products are applied with quality workmanship. Our bespoke training courses are designed to give Sarnafil's Registered Contractors a full understanding of the requirements for working on our roofing systems, as well as health and safety, with a mix of theory, demonstrations and practical application work.

Our Applicator Training focuses on the correct application and installation techniques of Sikalastic Rapid Systems. The training course is designed to ensure the contractors understand the requirements of working on Sika Rapid systems, combining a mixture of theory, live demonstrations of every stage, chat and hands on practical application work. All trainees finish with a theory based test, to ensure that the contractors have listened and learned throughout the course. Comprehensive information is provided after the course to allow trainees to concentrate on practical elements.

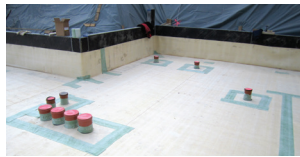


The course is held at Sika's Roofing Training Academy in Preston.

We also offer onsite guidance from our Application Department, giving operatives direct support. The availability of training will no doubt help to improve the reputation of the industry with potential employees.



# SIKA FULL RANGE SOLUTIONS FOR CONSTRUCTION:



**WATERPROOFING**



**CONCRETE**



**REFURBISHMENT**



**MERCHANT**



**SEALING AND BONDING**



**FLOORING**



**ROOFING**



**INDUSTRY**

## WHO WE ARE

Sika Limited and Sika Ireland Limited are part of the global Sika Group, specialising in the manufacture and supply of chemical based products. Sika have a leading position in the development and production of systems and products for bonding, sealing, damping, reinforcing, and protecting in the building sector and the motor vehicle industry. Sika has subsidiaries in 100 countries around the world and manufactures in over 190 factories. With over 17,000 employees Sika generates annual sales of CHF 5.75 billion (£4.69bn). We are also committed to providing quality, service, safety and environmental care.

In the UK and Ireland, we provide market-leading solutions for concrete, waterproofing, roofing, flooring, refurbishment, sealing & bonding, and industry, and have manufacturing sites in Welwyn Garden City, Preston, Leeds and Dublin with more than 700 employees and a turnover of more than £220 million.

The information, and, in particular, the recommendations relating to the application and end use of Sika® products, are given in good faith based on Sika's current knowledge and experience of the products when properly stored, handled and applied under normal conditions. In practice, the differences in materials, substrates and actual site conditions are such that no warranty in respect of merchantability or of fitness for a particular purpose, nor any liability arising out of any legal relationship whatsoever, can be inferred either from this information, or from any written recommendations, or from any other advice offered. The proprietary rights of third parties must be observed. Please refer to our homepage [www.sika.co.uk](http://www.sika.co.uk) for our current standard terms & conditions applicable to all orders. Users should always refer to the most recent issue of the Product Data Sheet for the product concerned, copies of which will be supplied on request.



## SIKA LIMITED

Sika Sarnafil  
Watchmead  
Welwyn Garden City  
Hertfordshire, AL7 1BQ  
United Kingdom

## Contact

Phone +44 1 707 358500  
Fax +44 1 707 329129  
E-Mail [sarnafilroofing@uk.sika.com](mailto:sarnafilroofing@uk.sika.com)  
[www.sarnafil.co.uk](http://www.sarnafil.co.uk)  
@SikaSarnafilUK

## SIKA IRELAND LIMITED

Sika House  
Ballymun Industrial Estate  
Dublin 11, D11 DA2V  
Ireland

## Contact

Phone +353 1 862 0709  
Fax +353 1 862 0707  
E-Mail [info@ie.sika.com](mailto:info@ie.sika.com)  
[www.sika.ie](http://www.sika.ie)

**Sarnafil®**

