



6 Tips for a leak-proof wet room

Advice to help you 'fit and forget'

Introduction

As someone with the responsibility of fitting out interiors, your focus is on providing the highest quality service to your customers, with minimal need for post-installation changes or modifications. You understand what your customers want, and you know when to suggest alternatives if you feel they would be more suitable or efficient.

An example of this is screeding. When installing wet rooms or accessible showers, concrete screeding is often a popular choice. However, are you aware of the risks surrounding screed flooring? If screeding is laid incorrectly, the wet room becomes a hazardous environment due to drainage issues. And, if for any reason the concrete should crack and water leaks through, the building infrastructure could be damaged.

Both of these issues could have a considerable impact on your reputation, and thus your livelihood and future revenue. Read on for our tips to help you 'fit and forget' and ensure your customers are left happy.



“
If screeding is laid incorrectly, the wet room becomes a hazardous environment due to drainage issues.”

Top Tips

Here are some helpful tips to minimise the risks surrounding wet room floor installation.

1

Screeding requires skill, follow all industry guidance and advice to minimise the chances of anything going wrong

In many new build properties, bathroom floors are screeded to create the main showering area of a wet room. The main danger of using traditional concrete screeding lies in the challenge of ensuring it is 100% leak-proof, and that the non-slip integrity of the surface remains.



2

There's no room for mistakes when laying screeding, outsource to an expert who specialises in it

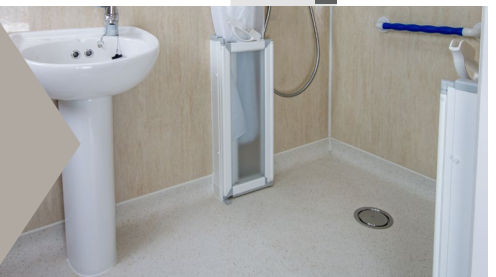
As the successful laying of screeding depends on your skills and ability, it may be necessary to outsource the task to a more experienced individual, and have peace of mind that it'll be carried out to a high standard.



3

Take care when considering the drain location

Drains can either be centrally offset (in the middle of the floor) or linear (located against a wall). Ensure they're approved for a wet room environment and that there's enough depth in the floor to install the drain.



Top Tips

Here are some helpful tips to minimise the risks surrounding wet room floor installation.

4

Ensure the slope is sufficient for the wet room draining area

Industry guidelines recommend a 1.5% gradient of slope within a shower area to a wet room drain. This removes the likelihood of water pooling which presents a serious slip hazard, even on non-slip vinyl safety flooring.



5

Carefully plan for recommended drying times

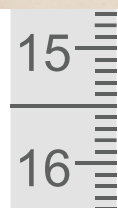
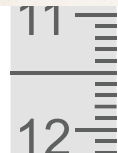
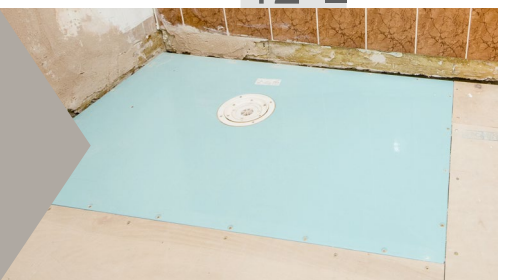
For freshly screeded surfaces, 24-48 hours must pass before light foot traffic resumes. However, it's recommended that 5-7 days pass before normal activity can be resumed, including the placing of heavy weights on the surface.



6

Consider a substitute for screeding

A cost-effective solution to the problem of leaking wet rooms is the installation of a wet room former. This is effectively an underfloor shower tray with a built-in gradient that helps achieve a leak-proof drainage surface.



Conclusion

Industry-leading wet room formers and shower trays are a cost-effective alternative to traditional concrete screeding anywhere you may be fitting a shower or bathroom facility.

Designed to withstand the rigorous demands required in sectors such as care and hospitality, they'll enable you to install a perfect leak-proof wet room every time. **Your customers will be happy with the quality product and increased safety of their service-users, and you'll have peace of mind and total reassurance that once the installation has taken place, you can focus on your next job.**

For more information on AKW's market-leading wet room solutions, arrange to speak to one of our experts on 01905 823 274 or email us on marketing@akw-ltd.co.uk