

BLÜCHER® Drain Design

Product catalogue for Design Drains



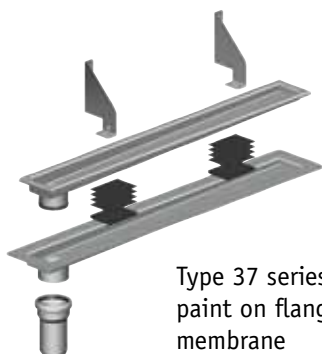
BLÜCHER®

K E E P I N G U P T H E F L O W

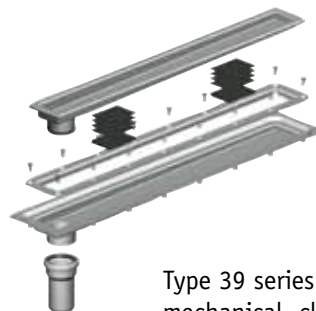
STAINLESS STEEL DRAINAGE SYSTEMS

WATERLINE bathroom channels for wooden or concrete floors with tanking membranes

Below you will find the various standard channels that make up the BLÜCHER LINE range of channels for wet rooms. We can also produce special variants if our standard program doesn't suit your application.



Type 37 series channel with paint on flange for the tanking membrane



Type 39 series channel with mechanical clamping flange for the tanking membrane

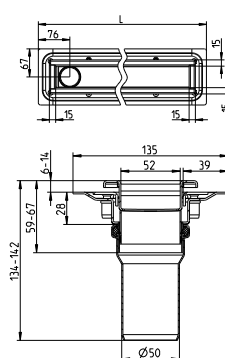
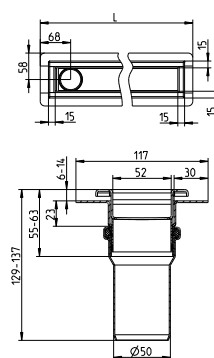
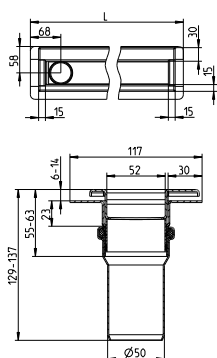
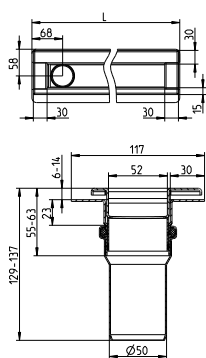
Against 3 walls type 371



Against 1 wall type 374



Free placing type 375 / 395

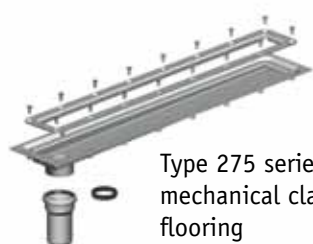


Type No.	L
371.070.056.20	700
371.080.056.20	800
371.090.056.20	900
371.100.056.20	1000

Type No.	L
374.070.056.20	700
374.080.056.20	800
374.090.056.20	900
374.100.056.20	1000

Type No.	L	Type No.	L
375.070.056.20	700	395.070.056.20	700
375.080.056.20	800	395.080.056.20	800
375.090.056.20	900	395.090.056.20	900
375.100.056.20	1000	395.100.056.20	1000

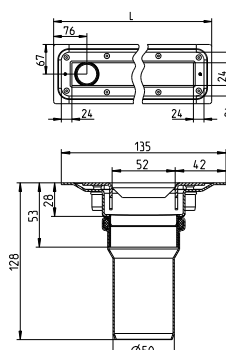
LINE channels for vinyl floors



Type 275 series channel with mechanical clamp for vinyl flooring

Grates and traps sold separately.

Free placing type 275



Type No.	L
275.070.056.20	700
275.080.056.20	800
275.090.056.20	900
275.100.056.20	1000

Grates and traps sold separately.

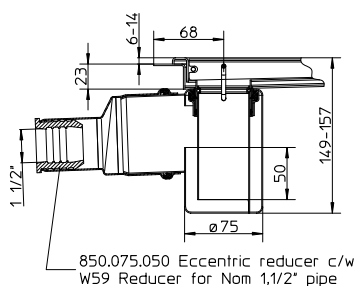
Lower parts

Grates for WATERLINE channels

Trap



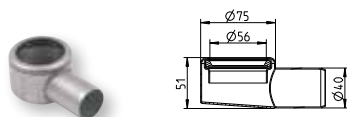
Type No	Depth of seal	Flow
510.000.059	50 mm	0,8 l/s



Trap type 510.000.059 --

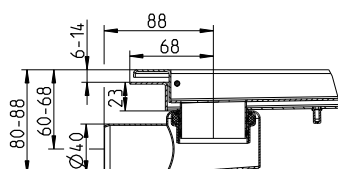
NB! Traps need to be purchased at time of order as they require installing under the channel and therefore cannot be retro fitted.

Lower part



Type No.	Outlet size
620.300.028	Ø40mm

For connection to outlet with existing trap.



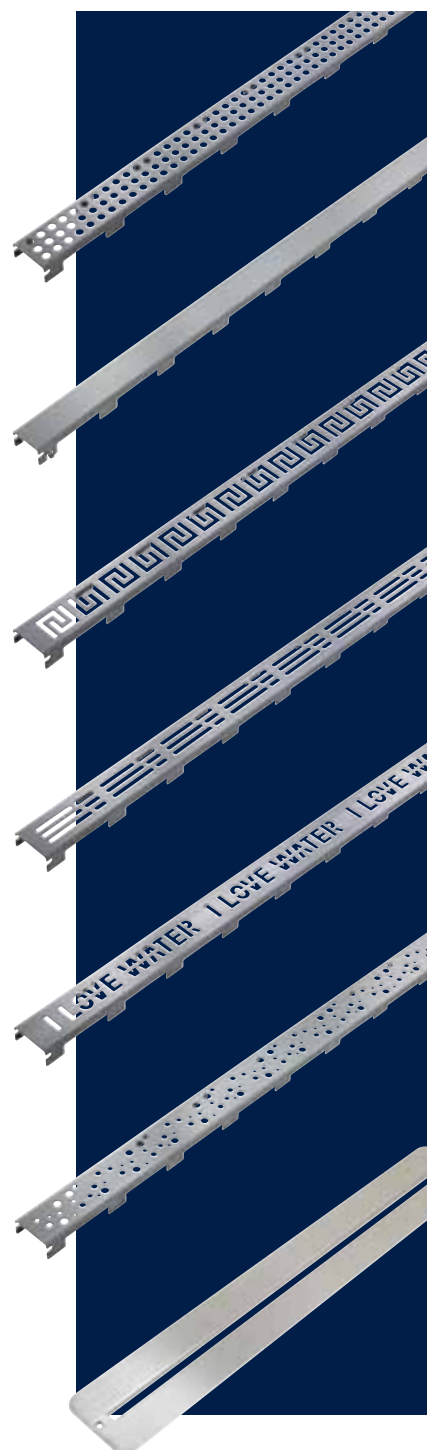
Measurements of channel and outlet

Type No.	Grate style	L	Flow
697.003.030	LINE VIENNA	300	0.70 l/sec.
697.003.070	LINE VIENNA	700	0.90 l/sec.
697.003.080	LINE VIENNA	800	0.90 l/sec.
697.003.090	LINE VIENNA	900	0.90 l/sec.
697.003.100	LINE VIENNA	1000	0.90 l/sec.
697.004.030	LINE COPENHAGEN	300	0.90 l/sec.
697.004.070	LINE COPENHAGEN	700	1.10 l/sec.
697.004.080	LINE COPENHAGEN	800	1.10 l/sec.
697.004.090	LINE COPENHAGEN	900	1.10 l/sec.
697.004.100	LINE COPENHAGEN	1000	1.10 l/sec.
697.005.030	LINE ATHENS	300	0.70 l/sec.
697.005.070	LINE ATHENS	700	0.90 l/sec.
697.005.080	LINE ATHENS	800	0.90 l/sec.
697.005.090	LINE ATHENS	900	0.90 l/sec.
697.005.100	LINE ATHENS	1000	0.90 l/sec.
697.006.030	LINE DETROIT	300	0.60 l/sec.
697.006.070	LINE DETROIT	700	0.75 l/sec.
697.006.080	LINE DETROIT	800	0.75 l/sec.
697.006.090	LINE DETROIT	900	0.75 l/sec.
697.006.100	LINE DETROIT	1000	0.75 l/sec.
697.007.030	LINE NEW YORK	300	0.60 l/sec.
697.007.070	LINE NEW YORK	700	0.80 l/sec.
697.007.080	LINE NEW YORK	800	0.80 l/sec.
697.007.090	LINE NEW YORK	900	0.80 l/sec.
697.007.100	LINE NEW YORK	1000	0.80 l/sec.
697.008.030	LINE OSLO	300	0.40 l/sec.
697.008.070	LINE OSLO	700	0.55 l/sec.
697.008.080	LINE OSLO	800	0.55 l/sec.
697.008.090	LINE OSLO	900	0.55 l/sec.
697.008.100	LINE OSLO	1000	0.55 l/sec.
697.004.070	LINE VINYL	700	0.60 l/sec.
697.004.080	LINE VINYL	800	0.60 l/sec.
697.004.090	LINE VINYL	900	0.60 l/sec.
697.004.100	LINE VINYL	1000	0.60 l/sec.

NEW

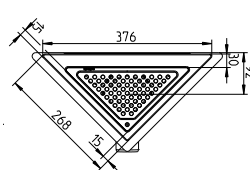
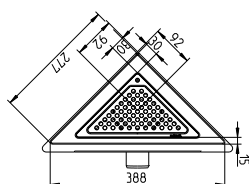


Grate style	Grate style	L	Flow
697.004.070	TOKYO	700	0.8 l/sec.
697.004.080	TOKYO	800	0.8 l/sec.
697.004.090	TOKYO	900	0.8 l/sec.
697.004.100	TOKYO	1000	0.8 l/sec.



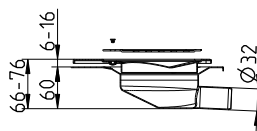
BLÜCHER® DRAIN DESIGN TRIO

Triangle drains for wooden and concrete floors with tanking membranes



The drains have been designed with double width edges where the drain meets the wall, to tile down onto. See the installation video online at www.blucher.co.uk for more information.

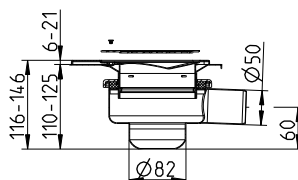
Minidrain Ø32 horizontal outlet



Type No.	Installation
381.360.032	Corner
381.370.032	Wall

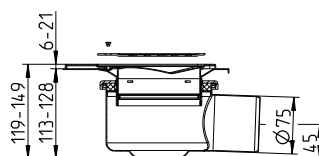
Cannot be fitted with trap.

Drain Ø50 horizontal outlet



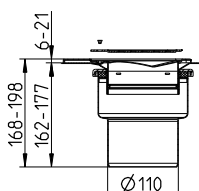
Type No.	Installation
314.360.050	Corner
314.370.050	Wall

Drain Ø75 horizontal outlet



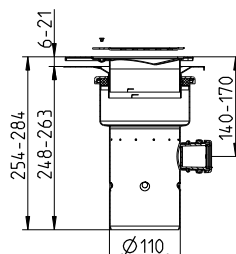
Type No.	Installation
310.360.075	Corner
310.370.075	Wall

Drain Ø110 vertical outlet



Type No.	Installation
350.360.110	Corner
350.370.110	Wall

Drain Ø110 vertical outlet with 2 side inlets



Type No.	Installation
355.360.110	Corner
355.370.110	Wall

Fittings for the triangle drain

Grates

BLÜCHER® Drains are supplied with the VIENNA grate as standard. Other grates can be ordered separately using the codes below.

Type No.	Grate style
620.300.030	TRIO OSLO
620.300.031	TRIO ATHENS
620.300.032	TRIO DETROIT
620.300.033	TRIO NEW YORK
620.300.034	TRIO COPENHAGEN
620.300.035	TRIO VIENNA



OSLO



ATHENS



DETROIT



NEW YORK

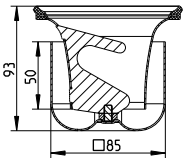


COPENHAGEN



VIENNA

Trap



Type No.
502.050.110

Trap type 502.050.110 has a flow rate of 1,7 l/sec with a depth of seal of 50 mm.

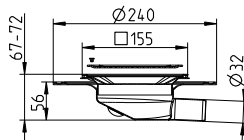
The trap cannot be used with the 381 style trio drain.

The diamond drains for concrete and wooden floors with tanking membranes

There are lots of variants in the BLÜCHER Drain SQUARE range. Below you can see the most commonly ordered drains. The full range can be viewed at www.blucher.co.uk



Minidrain Ø32 horizontal outlet

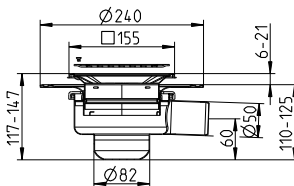


Type No.

381.300.032

Cannot be fitted with trap.

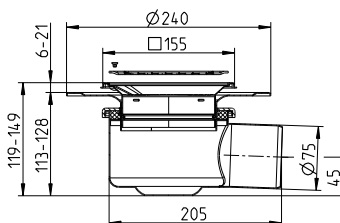
Drain Ø50 horizontal outlet



Type No.

314.300.050

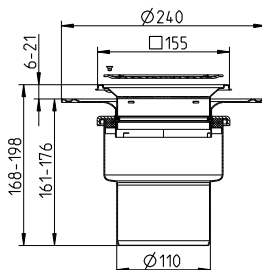
Drain Ø75 horizontal outlet



Type No.

310.300.075

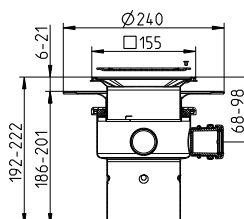
Drain Ø110 vertical outlet



Type No.

350.300.110

Drain Ø110 vertical outlet with 3 side inlets



Type No.

351.303.110

Side inlets

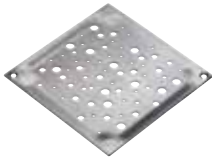
3

Fittings for the diamond drain

Grates

BLÜCHER® Drains are supplied with the VIENNA grate as standard. Other grates can be ordered separately using the codes below.

Type No.	Style
610.155.425	SQUARE OSLO
610.155.427	SQUARE ATHENS
610.155.428	SQUARE DETROIT
610.155.429	SQUARE NEW YORK
610.155.521	SQUARE COPENHAGEN
610.155.421	SQUARE VIENNA



OSLO



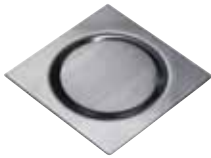
ATHENS



DETROIT



NEW YORK

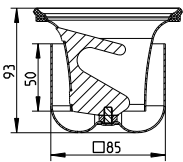


COPENHAGEN



VIENNA

Trap



Type No.
502.050.110

Trap type 502.050.110 has a flow rate of 1,7 l/sec with a depth of seal of 50 mm.

The trap cannot be used with the 381 style square drain.

BLÜCHER®

BLÜCHER employees over 300 staff who, through commitment and know how have developed a range of high quality stainless steel drainage systems which is sold throughout the world.

For more information on you local supplier log on to www.blucher.com

BLÜCHER® EuroPipe

BLÜCHER® Channel

BLÜCHER® Drain



KEEPING UP THE FLOW