

RECOVER

CARPET TILES AND SHEET MADE FROM RECYCLED MATERIAL



100% RECYCLABLE

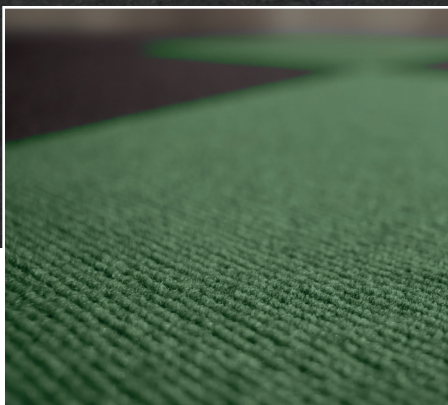
SINGLE POLYMER

NO ADDITIVES

NO LANDFILL

LIGHTWEIGHT BOXES

HIGH THERMAL AND
ACOUSTIC PROPERTIES



RAWSON
CARPET SOLUTIONS

RECOVER CORD

Through Research and development, UK Manufacturer Rawson have created a product which is surely the future for interior textiles.

Utilising the highest grade Polyester PET, and advanced machinery, a soft luxurious surface product in a selection of aesthetic colours has been created.

This, backed with a specially designed single polymer robust backing for the tile, provides a product to the market with proven recyclability back into PET, offering a multitude of further life uses.

Recover is available in sheet and tile. both are manufactured using 80% recycled material.

Our standard swatch is available ex stock, however as a manufacturer, bespoke colours and designs are always an option.

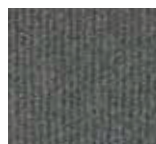
The benefits continue with a light weight box, easy cutting and high acoustic and thermal properties.



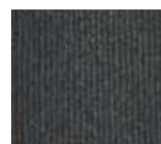
**A fully recyclable Carpet tile. NO LANDFILL.
NO ADDITIVES. NO LATEX. SINGLE POLYMER.
Made from 80% recycled material.**

Spec

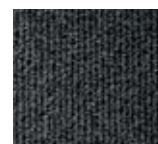
Surface Material	80% Recycled PET Polyester 20% Virgin Polyester
Backing Material	80% Recycled PET Polyester 20% Virgin Polyester
Surface weight	1000g
Total weight	2000g
Thickness	7mm
Tiles per box	20 (5M sq)
Dimensional stability	Pass
Fire Accreditations	Pass



Natural



Climate



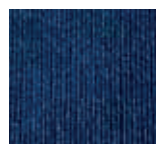
Conserve



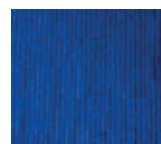
Carbon



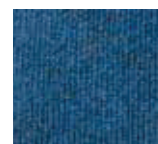
Atmosphere



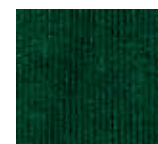
Protect



Solar



Ozone



Rainforest



Trees



RAWSON
CARPET SOLUTIONS

Get in touch with our creative sales team for more information and technical knowledge.

+44 (0) 1924 382860 rcsales@werawson.co.uk

www.rawsoncarpetsolutions.co.uk



PM588513

