



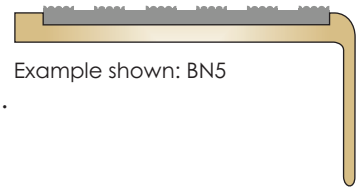
Stair Nosings & Edgings - Lead Times

Brass Stair Nosings With PVC Infills

Typical lead time for Polished and Satin finishes - 5-7 working days.

Typical lead time for Antique Brass and Antique Bronze - 10-14 working days.

Lead times may vary for large orders.



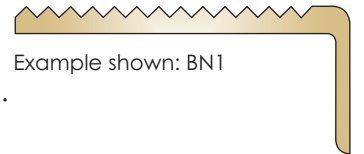
Example shown: BN5

Brass Stair Nosings With Ribbed Treads

Typical lead time for Polished and Satin finishes - 5-7 working days.

Typical lead time for Antique Brass and Antique Bronze - 10-14 working days.

Lead times may vary for large orders.



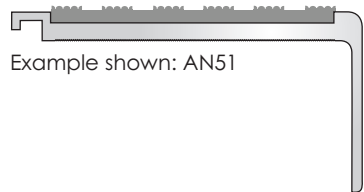
Example shown: BN1

Aluminium Stair Nosings With PVC Infill

Typical lead time for Mill Aluminium finish - 2-3 working days.

Typical lead time for Polished and Satin finishes - 4-5 working days.

Lead times may vary for large orders.



Example shown: AN51

Aluminium Stair Nosings With Ribbed And Castellated Treads

Typical lead time for Mill Aluminium finish - 2-3 working days.

Typical lead time for Polished and Satin finishes - 4-5 working days.

Lead times may vary for large orders.

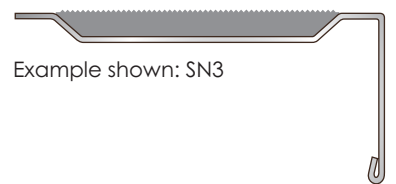


Example shown: AN5

Stainless Steel Nosings With PVC Infill

Typical lead time for Bright and Brushed finishes - 10 working days.

Lead time may vary for large orders.

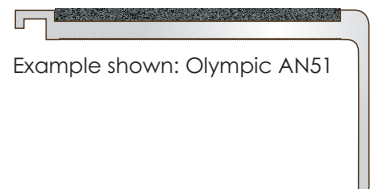


Example shown: SN3

Aluminium Stair Nosings With Olympic Carborundum Infill

Typical lead time 14 working days.

Lead time may vary for large orders.



Example shown: Olympic AN51

Staircase Stringer Trims

Typical lead time 5 working days.

Lead time may vary for large orders.



Example shown: AT35

Stair Nosings - Technical Information & Installation

General

C.A.T. stair nosings are manufactured to the highest specification in brass and aluminium. A selection of nosings have ribbed treads, others have castellated treads and there are those with PVC infills which are available in a range of colours.

Selection

Choose from nosings in various gauges and shapes to accommodate different step edges and floorings. A number of nosings are designed with a diminished edge for retro installation on hard floorings, including vinyl, terrazzo, wood, etc.

Finishes

Brass: Polished Brass • Satin Brass • Antique Brass • Antique Bronze.

Aluminium: Polished • Satin • Mill.

Please note that we are constantly developing new finishes. Please contact the C.A.T. sales office for the latest developments.

Data

Brass alloy to BS 2874 : 1986

Aluminium alloy to BS 1474 : 1987

PVC to BS 6746 : 1990

Measuring Steps

When measuring stair nosings steps should be numbered from top to bottom, indicating floor levels, flights and landings for the cutting and installation plan.

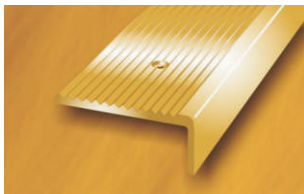
Staircases with open strings should be measured oversize by 50mm for cutting on site.

A measuring/ordering sheet can be found in this catalogue or call the C.A.T. sales office for advice.

Installation

It is highly advisable when installing stair nosings to use screw fixings and a suitable gap filling cartridge adhesive after ensuring that treads and risers are in good order.

Advice on adhesives is available by contacting the C.A.T. sales office.



Stair Nosings With Ribbed And Castellated Treads

Can be pre-drilled for screw and adhesive fixing, alternatively nosings can be supplied undrilled for adhesive fixing only if suitable and requested.



Stair Nosings With PVC Infills - Retro Fit

Retro fit option when installing stair nosings with PVC infills. Specify retro fit for a neat, concealed fixing finish.

Retro fit nosings are supplied cut to size with pre-drilled channel for countersunk screw fixings. On site, having secured nosings to treads with screws and adhesive, peel away protective cover from adhesive carrier tape, insert infill into channel applying pressure ideally with a roller to ensure a good bond along the entire length of the tread.

Infills should be fitted at normal room temperature, not in cold environments, to avoid the possibility of contraction. Infills supplied oversize for cutting in.



Stair Nosings With PVC Infills With Concealing Plugs

Stair nosings are supplied pre-drilled and affixed with screws and adhesive.

A small 'dab' of adhesive is applied to screw heads and concealing plugs gently tapped level with the infill.



Installation Using Adhesive Only

Whilst C.A.T. recommends that all nosing profiles are fixed with screws and adhesive, it recognises that in some instances an adhesive fixing only is preferred. In these instances we recommend the use of Stycco Flex adhesive from F.Ball & Co. Please contact the sales office for details.

When adhesive only is used, ensure adequate cure time is allowed before allowing pedestrian access to the step(s).

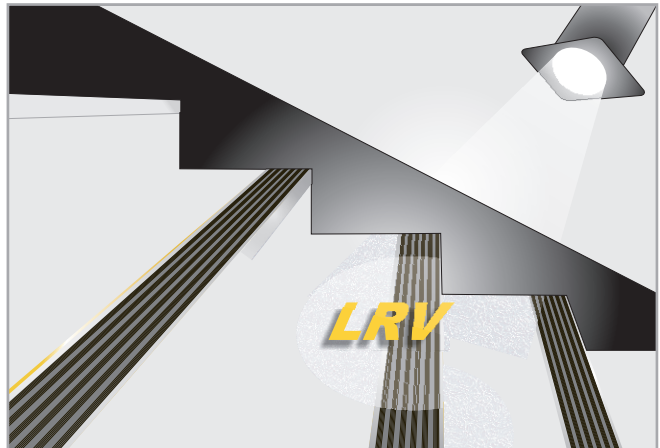


Stair Nosings - Infill, Colour Options & LRVs

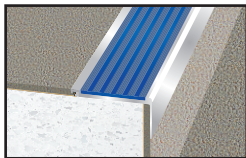
Light Reflectance Values (LRV)

LRV is a measurement which expresses the percentage of light that is reflected from a surface with lighter finishes at the upper end of the scale and darker finishes at the lower. Designers of buildings need to comply with the building regulations applicable to the structure under consideration. Since 2004 guidance has existed on access to and use of buildings. The guidance is particularly concerned with provisions to assist the disabled, including those who are visually impaired.

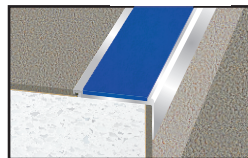
The guidance highlights the need for certain surfaces and features to "contrast visually" with their surroundings. This is relevant to a wide range of non-residential buildings including, hospitals, schools, hotels, theatres, etc.



PVC Infills



Castellated



Textured

The current guidance in the regulations and in the relevant codes of practice BS8300:2009 is that adequate visual contrast is provided if the Light Reflectance Value (LRV) of the contrasting areas exceeds 30 points, "i.e., the contrast between the stair edging and the floor covering".

The testing equipment used to assess the LRV of C.A.T. product finishes is an integrated sphere spectrophotometer.

Black
Castellated: LRV 4.25
Textured: LRV 4.47



White
Castellated: LRV 84.22
Textured: LRV 88.85



Light Grey
Castellated: LRV 12.33
Textured: LRV 12.74



Flint
Castellated: LRV 11.27
Textured: LRV 11.66



Granite
Castellated: LRV 7.02
Textured: LRV 7.14



Regency
Castellated: LRV 5.16
Textured: LRV 5.37



Mid Blue
Castellated: LRV 6.53
Textured: LRV 6.71



Nimbus
Castellated: LRV 4.77
Textured: LRV 4.95



Peat
Castellated: LRV 5.88
Textured: LRV 6.04



Rustic
Castellated: LRV 5.52
Textured: LRV 5.79



Fawn
Castellated: LRV 11.27
Textured: LRV 11.53



Ivory
Castellated: LRV 37.42
Textured: LRV 37.65



Spruce
Castellated: LRV 6.38
Textured: LRV 6.59



Jade
Castellated: LRV 7.33
Textured: LRV 7.52



Yellow
Castellated: LRV 54.91
Textured: LRV 55.11



Poppy
Castellated: LRV 10.01
Textured: LRV 10.24



Claret
Castellated: LRV 5.83
Textured: LRV 6.09



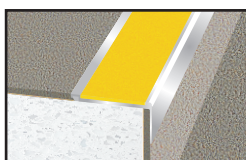
Porth Stone
Castellated: LRV 52.91
Textured: LRV 53.11



Polar Grey
Castellated: LRV 42.53
Textured: LRV 42.73



Olympic Carborundum Infill



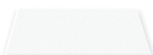
Black
LRV 4.76



Yellow
LRV 47.07



White
LRV 58.45



Metal Finishes

Finish	LRV	Finish	LRV	Finish	LRV
Aluminium Mill	35	Brass Mill	61	Stainless Steel Brushed	43
Aluminium Satin	57	Brass Satin	67	Stainless Steel Bright	58
Aluminium Polished	75	Brass Polished	65	Bright Chrome	56
Aluminium Matt Silver	57	Antique Brass	16 - 20	Satin Chrome	41
		Antique Bronze	6 - 10	Nisheen	39

Colours shown for guidance only. Please request sample for accurate referencing.

Stair Nosings - Infill Types & SRVs

General

C.A.T. offer a range of infill types and tread surfaces to suit all application types. Some are designed for interior only applications with others suitable for external applications. In addition, ribbed and castellated treads offer a prestigious alternative where a coloured infill is not preferred.

Slip Resistance Values (SRV)

The SRV of C.A.T. stair nosings and edgings has been independently determined using the Pendulum 4S testing method in conjunction with the guidelines recommended by the UK Slip Resistance Group.

UK Slip Resistance Group classified the degree of slip resistance as follows:

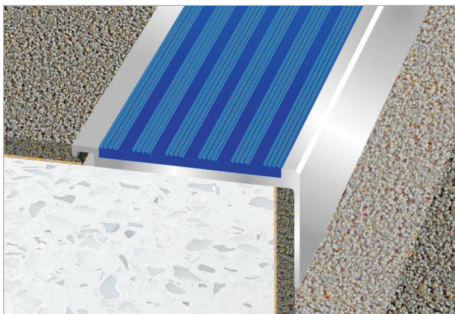
Classification	*PTV
High Slip Potential	0 - 24
Moderate Slip Potential	25 - 35
Low Slip Potential	36 +

*Pendulum Test Value



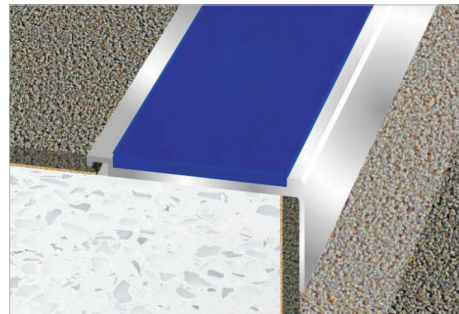
The results shown are for testing in the direction of normal travel on stairs, i.e., ascending and descending. Lateral testing results are available on request.

Castellated PVC Infill - Standard Supply



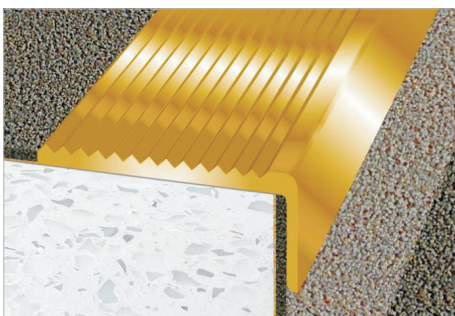
SRV
PTV Dry 85
PTV Wet 76

Smooth Textured PVC Infill



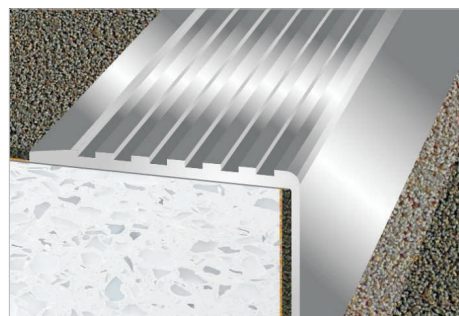
SRV
PTV Dry 65
PTV Wet 56

Ribbed Treads - Brass & Aluminium



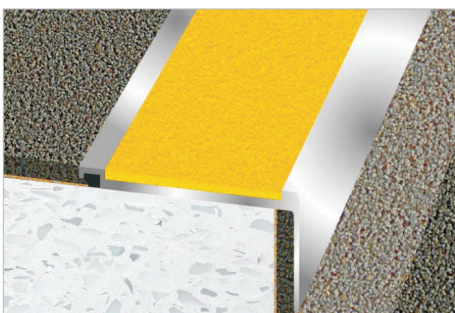
SRV
PTV Dry 73
PTV Wet 45

Castellated Treads - Aluminium



SRV
PTV Dry 82
PTV Wet 54

Olympic Carborundum - Exterior Infill



SRV
PTV Dry 92
PTV Wet 86

Colours shown for guidance only. Please request sample for accurate referencing.

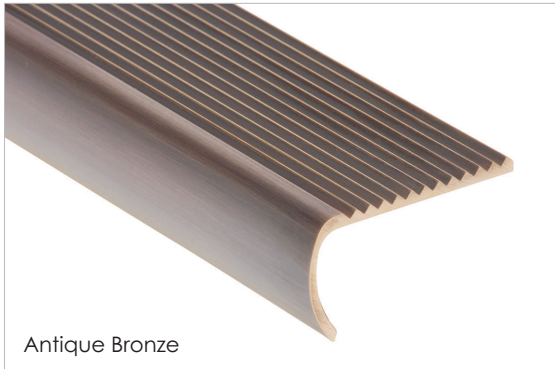
Special Finishes On Stair Nosings



Chelsea Harbour project: stair nosing profile BN8, finished in Antique Bronze and with Peat textured infill.

Special Finishes On Stair Nosings

Examples



A selection of C.A.T. stair nosing products are available with special finishes.

For information on the availability of these or any a finish on a particular product please refer the relevant product page in this catalogue. Should you require further assistance, please contact the C.A.T. sales office.

Finishes depicted in this catalogue are representative only and are subject to print interpretation. For accurate referencing, please request a sample from the C.A.T. sales office.

Brass Finishes

Antique Brass and Antique Bronze finishes are a chemically applied process to Brass products and are hand finished with a variance from batch to batch. Antique finishes are not foot traffic resistant and are designed to create an aged, unpolished effect.



Polished Brass
LRV 65



Satin Brass
LRV 67



Antique Brass
LRV 6-10



Antique Bronze
LR 16-20

Aluminium Finishes



Mill
LRV 35



Polished
LRV 75



Satin
LRV 57

Stainless Steel Finishes



Bright
LRV 58



Brushed
LRV 43



LRV Guidance

The current guidance in the regulations and in the relevant codes of practice BS8300:2009 is that adequate visual contrast is provided if the light reflectance value (LRV) of the contrasting areas exceeds 30 points, "i.e., the contrast between the stair edging and the floor covering".

The testing equipment used to assess the LRV of C.A.T. product finishes is an integrated sphere spectrophotometer.