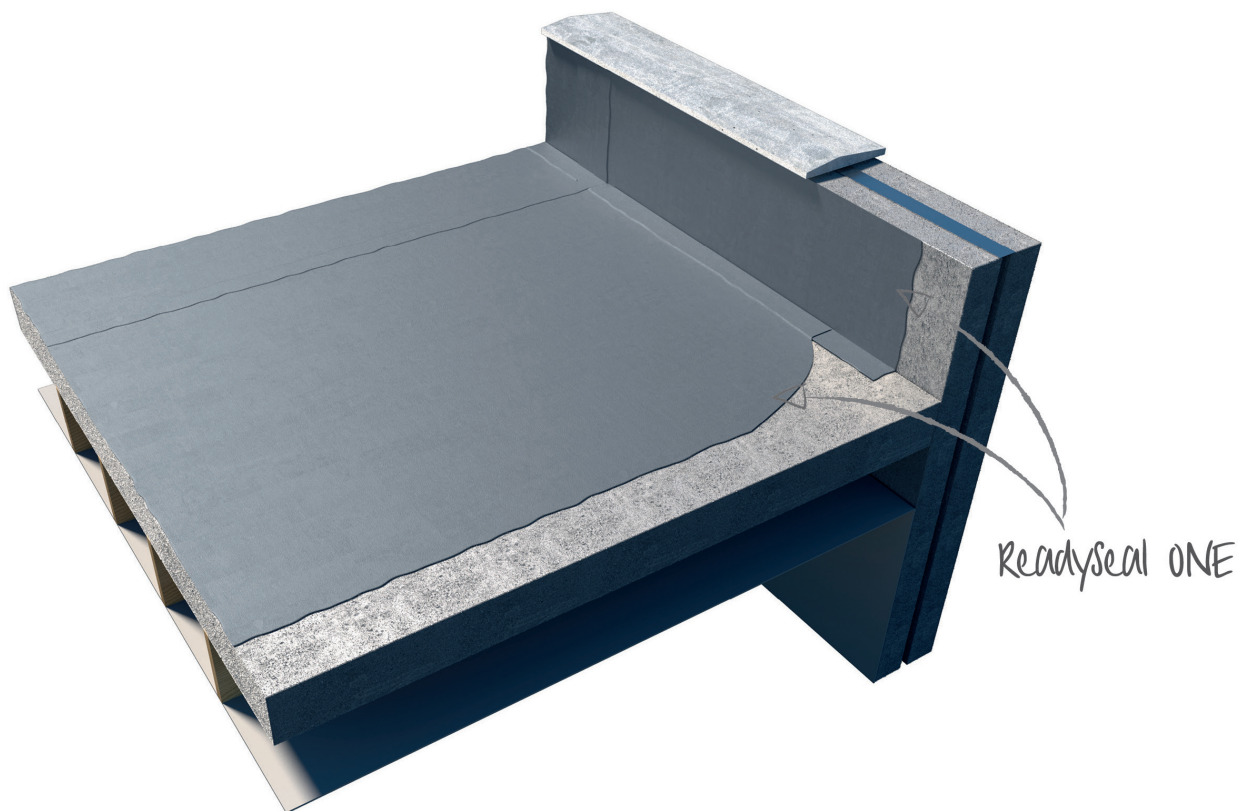


ReadySeal ONE

Product Data Sheet



ReadySeal ONE

Waterproofing Membrane

General Information

ReadySeal ONE is a one part, quick drying, plasticiser, cyanate-free and solvent free alpha-hybrid polymer waterproofing with 100% solids. ReadySeal ONE can be applied in temperatures between 3°C* and +50°C using a brush, roller or airless spray equipment. ReadySeal ONE can also be installed on concrete that is still within its 28 day curing period subject to peel testing (consult Radmat for further information).

Product uses:

- As the primary waterproofing in external and inset balconies.

Product features:

- Easy application
- High chemical resistant
- 3° C to 50°C applied
- Low odour

For a comprehensive NBS J31 specification contact Radmat Building Products.

Directions of Application

Preparation:

- Application surface should be dry, free of dust and loose parts (such as anti-stick material) and oil. The surfaces should be waste free. An electric vacuum cleaner is advisable. Wash the surface with clean water if necessary.
- Application surface may be damp but not pools of water
- Cracks on the surface should be repaired with suitable materials.
- If application will be covered with ceramic surface the strength of the joints should be inspected and replaced if necessary or missing parts must be completed.
- Do not add any material or thin before using ReadySeal ONE.
- Expansion joint materials must be checked for compatibility.
- Wall floor joints such as the formation of cold joints should be treated with suitable materials

Application:

After the surface is prepared ReadySeal ONE can be applied by brush, squeegee, roller or airless spray. Do not thin ReadySeal ONE.

Upstands

Whenever possible install the upstands first using a brush or roller.

Concrete Deck with a Concrete Upstand

1. Open the tin and stir gently to mix the contents thoroughly, do not whisk.
2. Apply the ReadySeal ONE a minimum of 80mm onto the horizontal surface and 150mm up the upstand (75mm at thresholds) in accordance with BS 6229, covering all exposed upstand areas at a rate of approx. 1 litre/m².

Concrete Deck with non-Concrete Upstand (see overleaf)

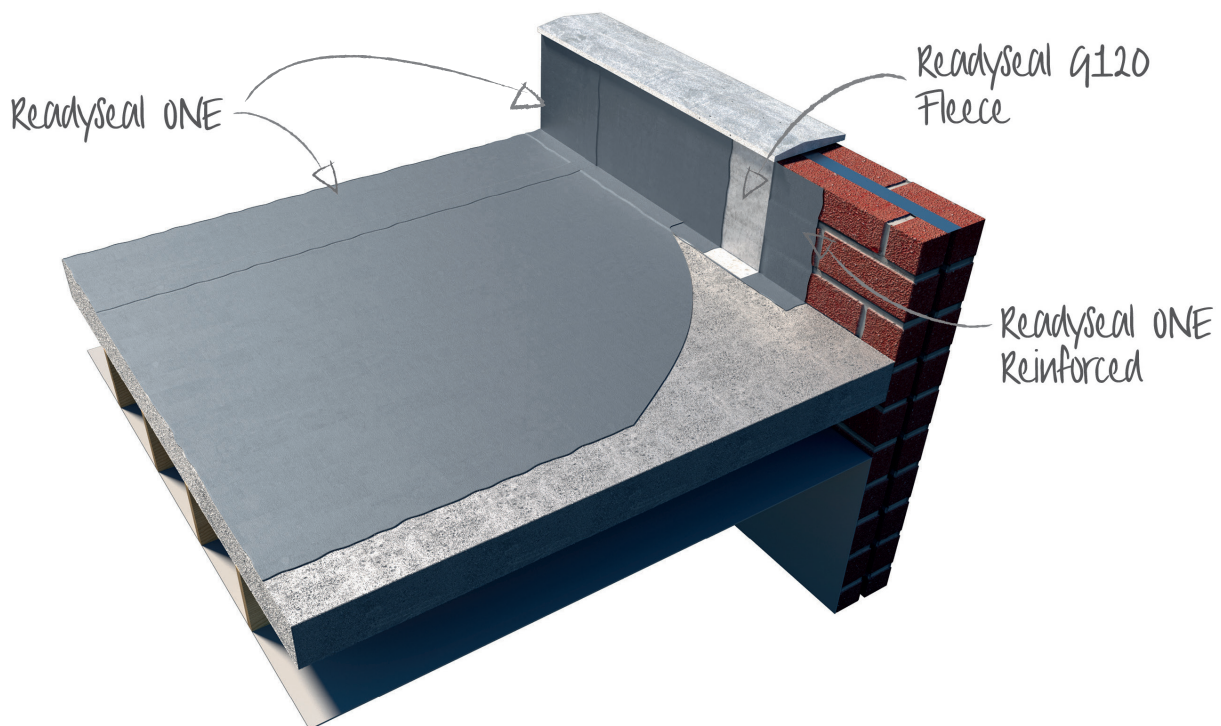
*above dew point

ReadySeal ONE

Waterproofing Membrane

Concrete Deck with non-Concrete Upstand

1. Open the tin and stir gently to mix the contents thoroughly, do not whisk.
2. Apply the ReadySeal ONE a minimum of 80mm onto the horizontal surface and 150mm up the upstand (75mm at thresholds) in accordance with BS 6229, covering all exposed upstand areas at a rate of approx. 1 litre/m².
3. Embed the appropriate Radmat Reinforcement Fleece immediately after the first coat of ReadySeal ONE is applied, ensuring a smooth application by carefully using a soft brush. Each roll of Radmat Reinforcement Fleece must overlap the previous roll by at least 75mm. Installation to be according to guidelines and specifications supplied by Radmat Building Products Ltd.
4. Apply a second coat of ReadySeal ONE promptly, making sure that the Radmat Reinforcement Fleece is fully coated and you leave a flat and level surface. Apply the second coat at a rate of approx. 0.9 litres/m².



Flat Area

1. Open the tin and stir gently to mix the contents thoroughly, do not whisk.
2. Apply the ReadySeal ONE with a squeegee to the flat area at a rate of between 1.96 and 2.95 litres/m² ensuring a 75mm overlap to the previously installed wall flashing. If the wall flashing was installed 15 hours before the installation of the ReadySeal ONE on the flat area apply ReadySeal Lap Primer to the overlap area and allow to evaporate prior to installation of the flat area.
3. Allow to cure before trafficking the area.

Warning

- Adhesion testing is recommended prior to application on ceramics, natural stones and glossy surfaces.
- Opened packages should be completely finished.
- After curing, ReadySeal ONE is non-hazardous.

Safety notice

- On application, use protective gloves and in a well-ventilated place.
- If ReadySeal ONE comes in contact with the skin or eyes bathe immediately with plenty of water and soap.
- For more information please contact our technical department.

ReadySeal ONE

Waterproofing Membrane

PRODUCT SPECIFICATION

Essential characteristics		Performance/Unit
Appearance		Fluid
Colour		RAL 7046 Telegrey 2
Thickness	Upstand Flat	approx 2.3mm approx 1.5mm
Density (ISO 1183-B)		1.50 gr/cm ³
Viscosity (25 °C)		85.00-95.00
Elasticity (BS2782 Part 3)		ONE 0%
Hardness (ShoreA) (DIN 53505-A-87)		ONE 0%
Heat exchange flexibility		-40°C - +80°C
Water vapour permeability (for 1.5mm thickness) Sd:		1m
Crack bridging		2mm
Film forming time (25°C, 50% R.H.)		30 mins
Cure (25°C, 50%R.H.)		5 hours
Completion of Cure (25 °C, 50% R.H.)		7 days
Water absorption (cured material (28 days) under water)		< 2%

Delivery conditions

Delivery

20 kg tin, 24 per pallet.

Storage and shelf life

Store in dry conditions in original packaging at temperatures between +5°C and +30°C. Protect from direct sunlight and frost. In the original closed package ReadySeal 30 will be in good condition for at least 1 year.

This information given in good faith and is based on the latest knowledge available to Radmat Building products Ltd. Whilst every effort has been made to ensure that the contents of the publication are current while going to press, customers are advised that products, techniques and codes of practice are under constant review and liable to change without notice.

For further information on Radmat products and services please call **01858 410372**, email techenquiries@radmat.com or visit our website www.radmat.com **JUNE 2019**



Radmat Building Products Ltd Holland House, Valley Way, Rockingham Road, Market Harborough, Leicestershire, LE16 7PS **T** : 01858 410 372 **E** : techenquiries@radmat.com