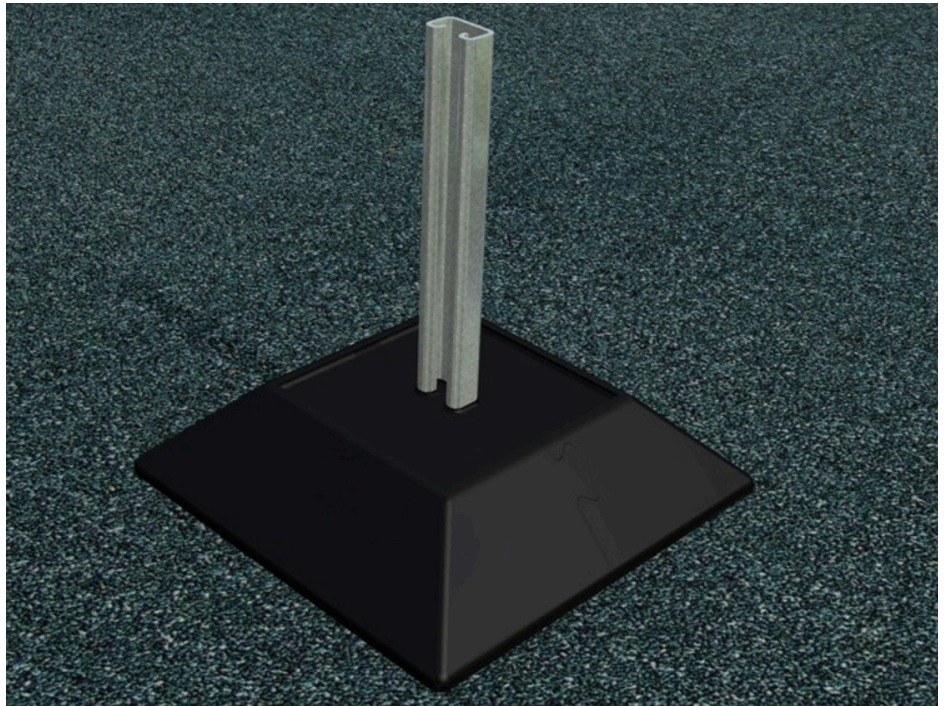


PipePockets[™]

For sealing flat roof penetrations

Product Data Sheet



PipePockets - for sealing flat roof penetrations

General Information

Radmat PipePockets provide quick and easy method of creating a 50mm deep waterproof pitch pocket, a method of waterproofing small or irregular shaped penetrations. Manufactured from polyurethane elastomer, Radmat PipePockets consist of pre-formed elements for simple site assembly prior to being filled with PPR-5000 sealer, a fast setting solvent-free multi-use flexible sealant. Suitable for use with PermaQuik, EshaFlex, EshaGum and EshaUniversal.

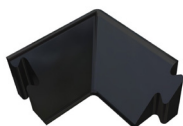
Applications

For sealing small, irregular shaped or difficult to detail penetrations on PermaQuik, EshaFlex, EshaGum and EshaUniversal roofing systems.

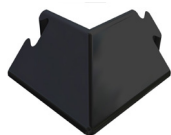
PP-100



PP-IC



PP-OC



SEELEX-BI



PPR-5000



PPR-JUG / WHISK



Code	Internal Dimension (mm)	To suit pipe diameters (mm)
PP-100	100	0-60
PP-150	150	0-110
PP-200	200	0-160
		Minimum 20mm of sealer between penetration and inside of PipePocket

Individual PipePocket components

Code	Description (mm)
PP-IC	Inside Corner
PP-OC	Outside Corner
PP-S-150	Straight 150mm
PP-S-250	Straight 250mm
PP-S-300	Straight 300mm

PP-S-150/250/300



Code	Description	Instructions
SEELEX-BI	300ml cartridge	Apply with skeleton gun to bond PipePocket to roof surface, seal the tongue and groove joint, and interface between pipe or penetration and existing roof surface
PPR-500	Part A 3.86 kg/3420ml Part B 1.28kg/1030ml	Pour contents of Part B into part A. Thoroughly mix for 3-5 mins using PPR-whisk with a drill
PPR-JUG	Jug for dispensing PPR-5000	
PPR-WHISK	Whisk for mechanically mixing two components	

PipePocket kits

Code	Contents
PPK-150	8 x PP-OC, 8 x PP-S-150, 2 x LPS Sealant
PPK-250	8 x PP-OC, 8 x PP-S-250, 2 x LPS Sealant
PPK-300	8 x PP-OC, 8 x PP-S-300 2 x LPS Sealant

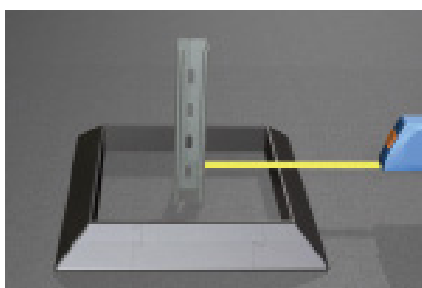
This information given in good faith and is based on the latest knowledge available to Radmat Building products Ltd. Whilst every effort has been made to ensure that the contents of the publication are current while going to press, customers are advised that products, techniques and codes of practice are under constant review and liable to change without notice.

For further information on Radmat products and services please call **01858 410372**, email techenquiries@radmat.com or visit our website www.radmat.com

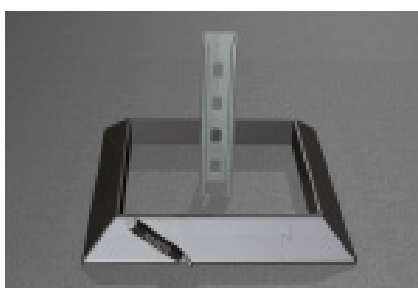
PipePockets - for sealing flat roof penetrations

Application guide

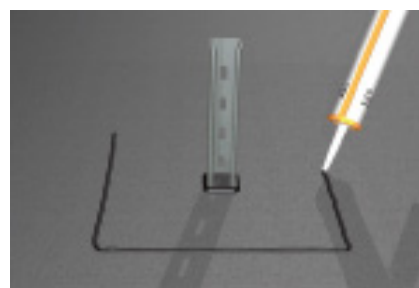
Ensure substrate is dry and clear of any loose gravel, dust granules or any foreign substances that can affect adhesion. The PPR 5000 (Parts A and B) should be kept at room temperature prior to use. PipePockets should not be installed or used in temperatures below 5°C. PipePockets are unable to accommodate any movement between finished base and the deck where installed.



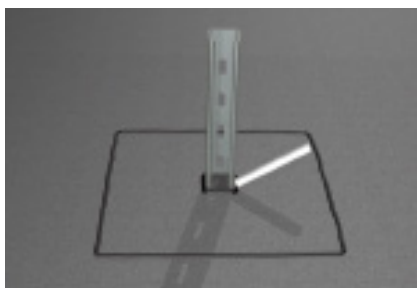
Place PipePocket with at least 20mm clearance between inside of pocket and penetration.



Mark around outside edge of PipePocket for reference.



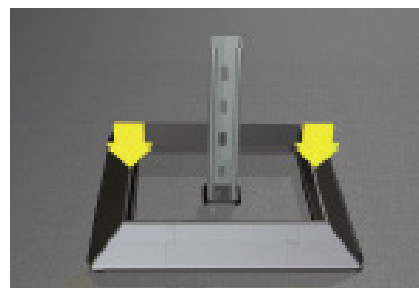
Seal base of penetration with LPS/Seelex BI and also apply a liberal bead to the substrate.



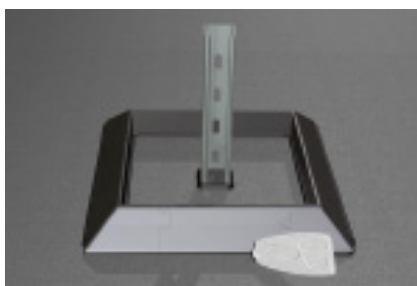
Ensure base of penetration is sufficiently sealed.



Apply LPS/Seelex BI in the joint(s) of the PipePocket.



Set PipePocket in place. Apply equal pressure to ensure positive contact with substrate.



Wipe away excess sealant.



Pour contents of PPR-5000 (Part B) bottle into PPR-5000 (Part A) tin. Thoroughly mix the two components for 3-5 mins using PPR-WHISK with a power drill.



Dispense PPR 500 into assembled PipePocket using PPR-JUG until full.