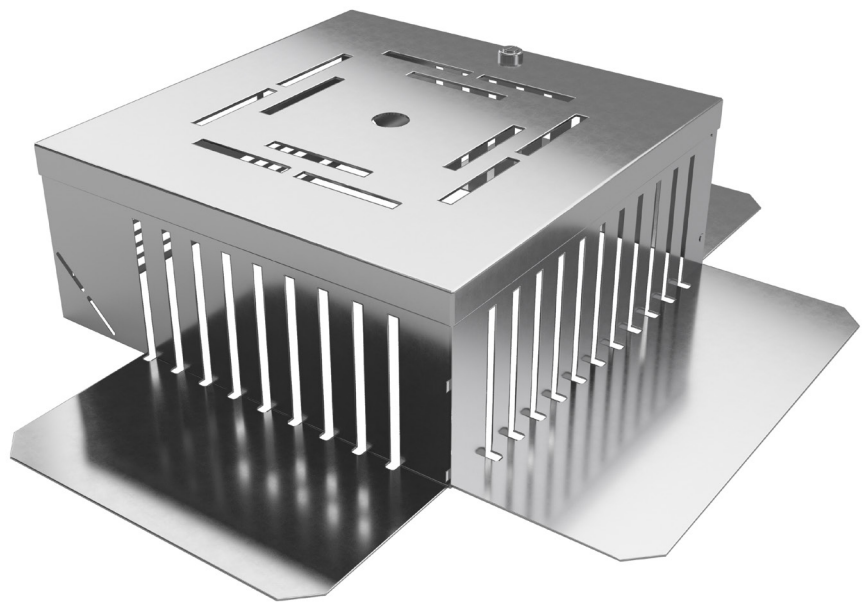


# ***Med0*** **Inspection Chamber**

## Product Data Sheet



---

Chamber enables easy control and cleaning whilst providing safe and steady drainage to green roofs.

## Product Data Sheet

### General Information

- Drains can be controlled and cleaned without bigger effort anytime. For safe and steady drainage of green roofs.
- Extremely space saving and easily to transport.
- Robust construction made of aluminium and galvanised steel sheet.
- Wide pressure distributing support-flange.
- Also usable next to parapets.
- With stable top cover.

Product Description	
<b>Body</b>	Aluminium, t = 1.50 mm with paint coating.
<b>Top Cover</b>	Galvanised steel sheet with paint coating t = 1.50 mm
<b>Measurement</b>	250 mm x 250 mm
<b>Height</b>	100mm
<b>Colour</b>	RAL 9007 (grey aluminium).

### Suggestion For A Tender

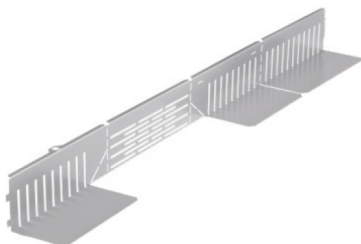
PCS Inspection Chamber	Foldable, Colour Coated Ral 9007, With Wide Pressure Distributing Support-Flange and Stable Top Cover
<b>Measurement</b>	250 mm x 250 mm
<b>Height</b>	100 mm
<b>Raw Material</b>	Chamber made of aluminium (t = 1.50 mm) Top cover made of galvanised steel sheet (t = 1.50 mm)

This information given in good faith and is based on the latest knowledge available to Radmat Building products Ltd. Whilst every effort has been made to ensure that the contents of the publication are current while going to press, customers are advised that products, techniques and codes of practice are under constant review and liable to change without notice.

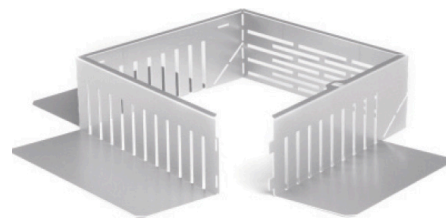
For further information on Radmat products and services please call **01858 410372**, email [technquiries@radmat.com](mailto:technquiries@radmat.com) or visit our website [www.radmat.com](http://www.radmat.com)

## Product Data Sheet

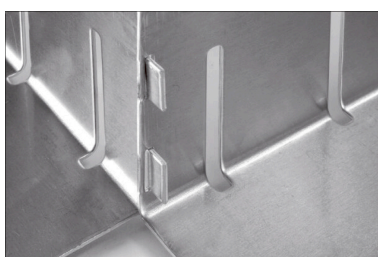
### Inspection Chamber Foldable



1. Condition upon delivery



2. Folding of the inspection chamber

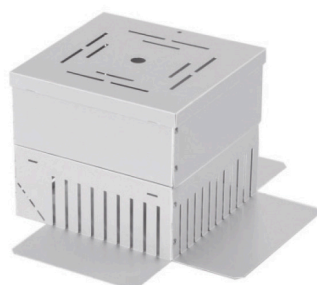


3. Inserting the joints / Corner joint

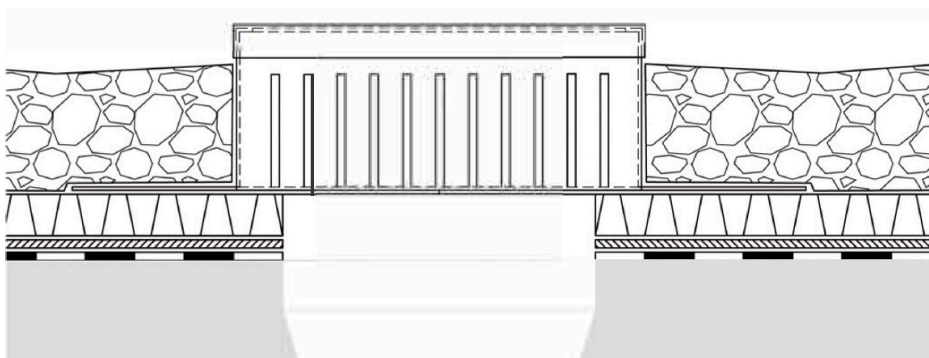
Insert the straight plates into the retainers and bend them



4. Putting on the top cover



5. Also usable with extension chamber



6. Installation details of inspection chamber

This information given in good faith and is based on the latest knowledge available to Radmat Building products Ltd. Whilst every effort has been made to ensure that the contents of the publication are current while going to press, customers are advised that products, techniques and codes of practice are under constant review and liable to change without notice.

For further information on Radmat products and services please call **01858 410372**, email [technquiries@radmat.com](mailto:technquiries@radmat.com) or visit our website [www.radmat.com](http://www.radmat.com)