

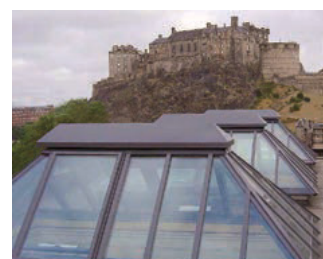
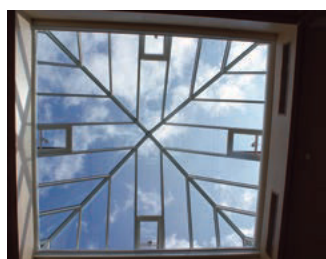
EVALITE SPECIAL GLAZING

TECHNICAL DATA

Self supporting rooflights are generally used on the ridge of a roof slightly above the finished roof level with a pitch of 30-45°.

They can be supplied with motorised ventilation and specialised glass if required.

| | Evalite Rooflights |
|-----------------------|--|
| Type | Evalite Rooflights for special glazing requirements can be pitched as required by Architect. To BS 5516 CP3 Chapter V and BS 6399 Part 3 1988. |
| Frame | Aluminium, aluminium to BS 1474:1987 Alloy 6063-T6. Bars normally at 600mm but can be changed to suit Architects' requirements. |
| Upstand Finish | Dark grey – XTEVA coated – Aluminium. |
| Colour | RAL 9010 white matt or any standard RAL colour. |
| Kerb | Structural kerb by Main Contractor. Normally 100mm/150mm wide x 150mm high. Kerb must be capable of supporting the weight of the structure. Glass structure weighs 50 kilos M ² surface area. |
| Glazing | Sealed double glazed units comprising 6.0mm clear toughened outer pane/16mm air gap argon filled, 6.4mm Low 'E' laminate inner. Other glass can be fitted if required to suit your requirements. |
| Fragility | They have been tested and are classed as NON-FRAGILE Class B. To ACR(M)001:2005 Test for Fragility of Roofing Assemblies. |
| Flashings | Lead by others. |
| Profile | Height in centre dependant on size of dome required. |
| Sizes | To suit your overall kerb size. |
| Fixing | IAW ICB fixing recommendations. |



All Rooflights have been tested at BRE and are manufactured to: BS EN 6375-1:2009 Weather Tightness; BS EN 1026 / 12207:2000 Air Permeability; BS EN 1873 / 12208:2000 Water Tightness; BS EN 12210:2000 Wind Resistance; BS EN 1991-1 Snow Load; BS EN ISO 140 Acoustic; BS EN 1627-1630 Security.

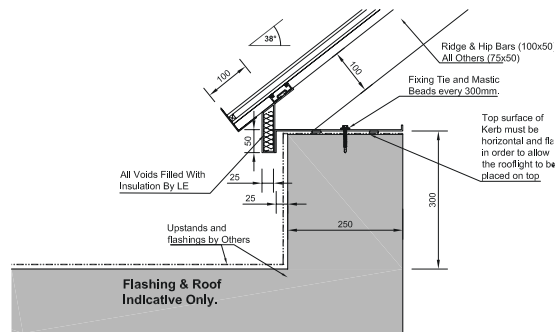
ICB (International Construction Bureau) Ltd.
Unit 9 -11, Fleets Industrial Estate, Willis Way, Poole, Dorset, BH15 3SU UK
Tel: 01202 785200 Fax: 01202 785201 Email: info@icb.uk.com

www.icb.uk.com

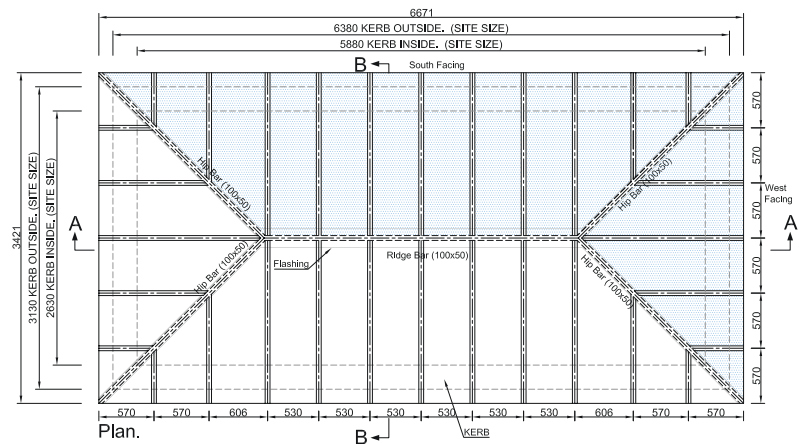
EVALITE SPECIAL GLAZING TECHNICAL DATA

The following diagrams show typical Special Glazing fixing details. Other details upon request.

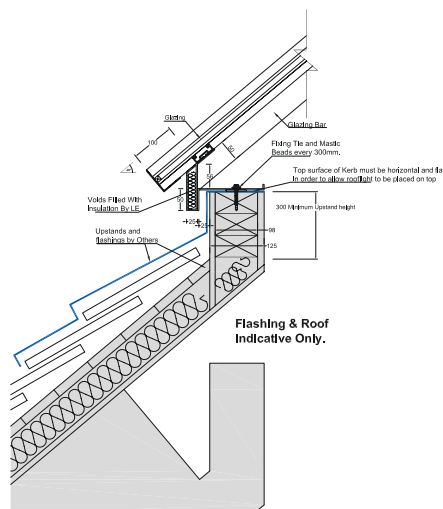
Diagram shows different glass can be used on the same rooflight for solar and light transmittance control.



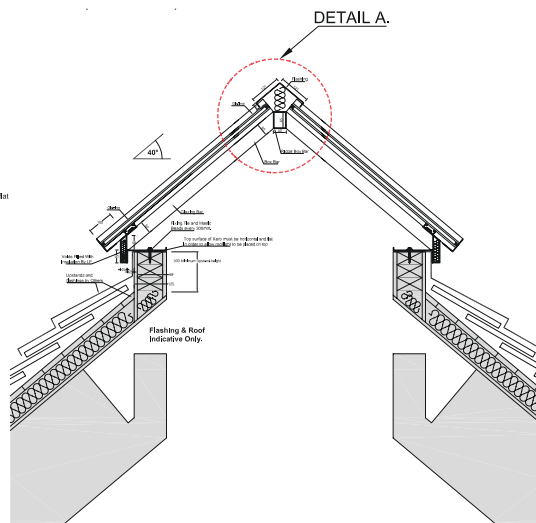
Detail A.



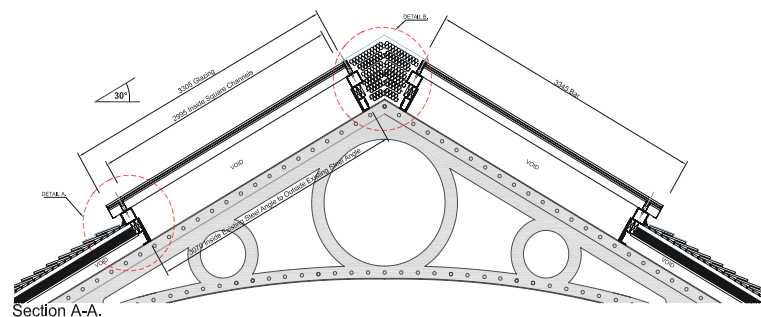
Plan.



Detail A.



Section A-A



Section A-A.

All Rooflights have been tested at BRE and are manufactured to: BS EN 6375-1:2009 Weather Tightness; BS EN 1026 / 12207:2000 Air Permeability; BS EN 1873 / 12208:2000 Water Tightness; BS EN 12210:2000 Wind Resistance; BS EN 1991-1 Snow Load; BS EN ISO 140 Acoustic; BS EN 1627-1630 Security.

ICB (International Construction Bureau) Ltd.
Unit 9 -11, Fleets Industrial Estate, Willis Way, Poole, Dorset, BH15 3SU UK
Tel: 01202 785200 Fax: 01202 785201 Email: info@icb.uk.com

www.icb.uk.com