

Important

Surface preparation:

		Primer not necessary	MARISEAL DETAIL PRIMER recommended
Polymeric Bitumenfelt (APP/SBS)	*5	x	
Chippings finished Bitumenfelt (APP/SBS)	*4	x	
Chippings finished Oxidized Bitumenfelt	*4	x	
Plain Oxidized Bitumenfelt	*5	x	
Painted surfaces	*3	x	
Steel	*1, *3	x	
Aluminium	*1, *3	x	
Copper	*1	x	
Zinc	*1	x	
Concrete	*2, *6		x
Lightweight concrete	*2, *6		x
Plaster	*2, *6		x
Screed	*2, *6		x
Brick	*2, *6		x
Stones	*2, *6		x
EPDM membranes	*1, *7	x	
PVC membranes	*1, *7	x	
PVC rigid	*1	x	
Wood	*2		x
Polyester	*1, *7	x	
Acrylic glass	*1	x	
Glass	*1	x	

*1: Before application, grind surface with sand-paper or grinding wheel. Then thoroughly clean/ degrease with MARISEAL DETAIL CLEANER.
*2: Residual moisture content of mineral substrates max. 5%. New cementitious surfaces must be at least 28 days old. Remove loose pieces mechanically.
*3: Always remove old paints.
*4: MARISEAL DETAIL PRIMER binds the slate chippings on the bitumenfelt. If in doubt it is recommended to use the MARISEAL DETAIL PRIMER.
*5: Liquify surface by firetorch and immediately saturate with enough dry silica sand (0.4-0.8mm).
*6: Before coating, brush off the surface with a wire brush, to roughen it.
*7: Always perform adhesion test before application
For not listed substrates please contact MARIS POLYMERS application department.

All information regarding the treatment of surfaces is to be considered indicative, as corresponds to the current level of laboratory and practical experience. Given the multitude of different materials in the market, deviations are possible. Therefore, absolute accuracy of given information can not be guaranteed. Due to the different object requests and the varying conditions, an adhesion test is necessary to guarantee suitability for the specific purpose. Preliminary coating adhesion tests are therefore recommended in all cases. Should doubts arise about the suitability of the coating for your surface, we will gladly test your surface samples.

Product information:

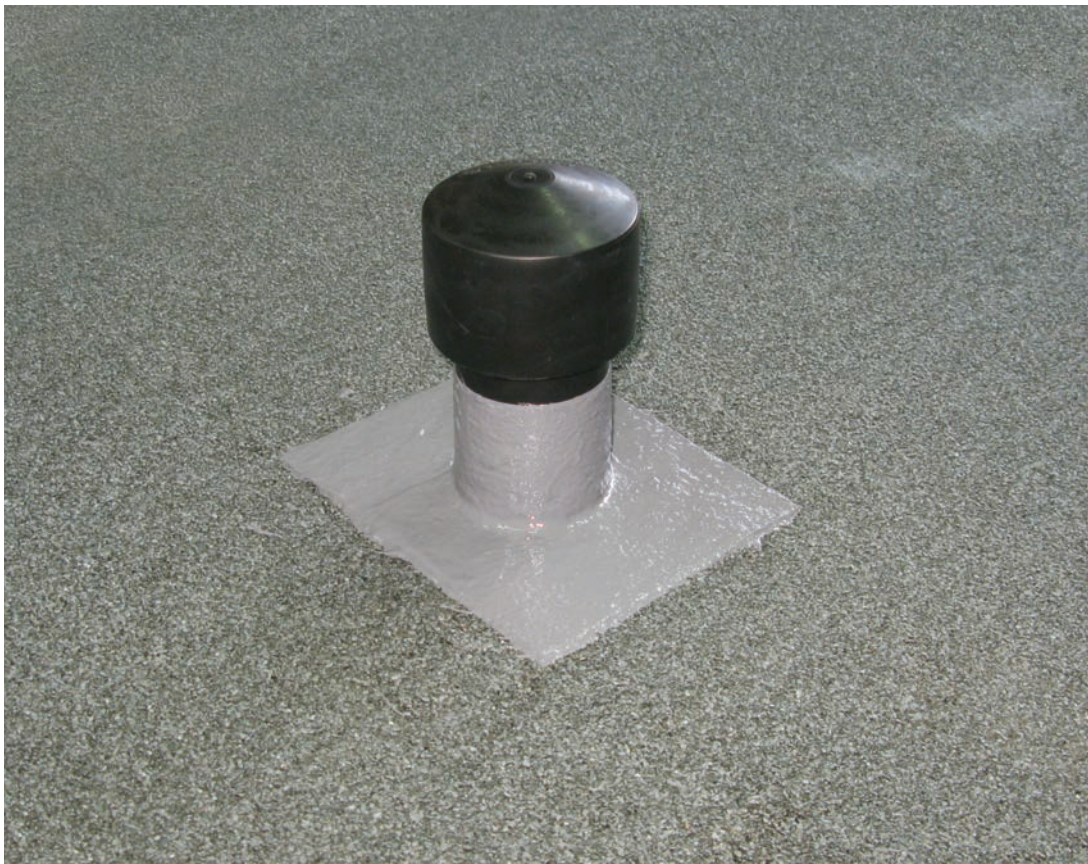
MARISEAL-DETAIL		
Description	One component, polyurethane-based, liquid membrane, reinforced with synthetic fibers	
Packaging	supplied in 6 kg pails	
Properties	Color	Grey, Black
	Density	1.32 g/cm3
	Hardness (Shore A scale)	70
	Viscosity	Thixotropic
	Elongation at Break	>250%
	Tensile strength	>4 N/mm2
	Rain stability time (20°C)	3-4 Hours
	Light pedestrian traffic	12-18 Hours
	Final Curing time	7 Days

MARISEAL-DETAIL PRIMER		
Description	One-component, quick drying, polyurethane-based primer	
Packaging	supplied in 1kg pails	
Properties	Color	Transparent
	Density	1.0 g/cm3
	Hardness Shore A	>95
	Adhesion (Concrete)	>1.5 N/mm2
	Touch dry (20°C)	1-2 Hours

Safety measures: contains isocyanates. See information supplied by the manufacturer. Please study the Safety Data sheet.

Maris Polymers®
POLYURETHANE SYSTEMS

SUCCESSFUL PRESENCE IN OVER 50 COUNTRIES WORLDWIDE



www.marispolymers.com



ICB (International Construction Bureau) Ltd
Unit 9-II Fleets Industrial Estate, Willis Way
Poole, BH15 3SU
Tel: 01202 785200 Fax: 01202 785201
www.icb.uk.com



MARIS POLYMERS SA
INDUSTRIAL AREA OF INOFYTA
GR-32011 INOFYTA, GREECE
TEL.: +30 22620 32918-9, FAX: +30 22620 32040
e-mail: info@marispolymers.gr

MARIS POLYMERS FRANCE
ZI de Villemilan
26 Avenue Ampère 91320
WISSOUS France
Tél: +33.(0).164.478.700, Fax: +33.(0).164.478.702
e-mail: info@resines.eu

MARIS POLYMERS ASIA Pte Ltd
18 Sin Ming Lane
07-24 Midview City
Singapore 573970
Tel: +65 67463528, Fax: +65 67463529
e-mail: lancekhoo@marispolymers.gr

MARIS POLYMERS SPAIN, S.L.U.
Pl. Mas Gali - Pirineus, 18
08503-Gurb(Bcn)
Spain
Tel.: +34 938869481, Fax: +34 938869482
e-mail: maris@marispolymerspain.com

MARISEAL-DETAIL®

ROOF DETAILS WATERPROOFING

Maris Polymers®
POLYURETHANE SYSTEMS

ROOF DETAILS WATERPROOFING

MARISEAL•DETAIL

The **MARISEAL•DETAIL** is a liquid-applied, thixotropic, permanent elastic, **fiber-reinforced**, one component polyurethane coating used for long-lasting waterproofing of complex roofing details and connections.

The **MARISEAL•DETAIL** is mainly used to waterproof details like:

- Pipes
- Flashings and 90° angles
- Lightdome
- Chimneys
- Photovoltaic systems
- Wall-floor connections
- Gutters, etc.



advantages

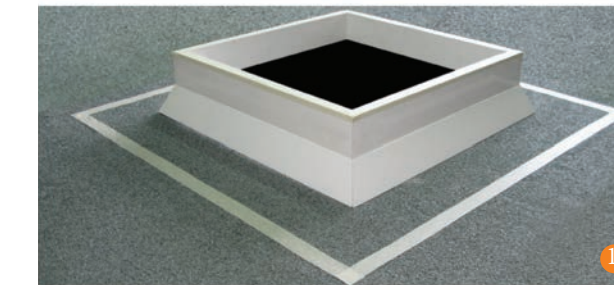
- simple application (brush)
- fiber reinforced
- it forms seamless membrane without joints or leak possibilities
- resistant to water; rain and frost
- maintains its mechanical properties over a temperature span of -30°C to +80°C
- provides water vapor permeability
- full surface adherence without any additional anchoring
- in case of damage, membrane can be easily repaired locally within minutes
- low cost

The **MARISEAL•DETAIL SYSTEM** consists of the compatible components:

- **MARISEAL•DETAIL**
- **MARISEAL•DETAIL REINIGER (CLEANER)**
- **MARISEAL•DETAIL PRIMER**
- **MARIFLEX•PU30 SEALANT**



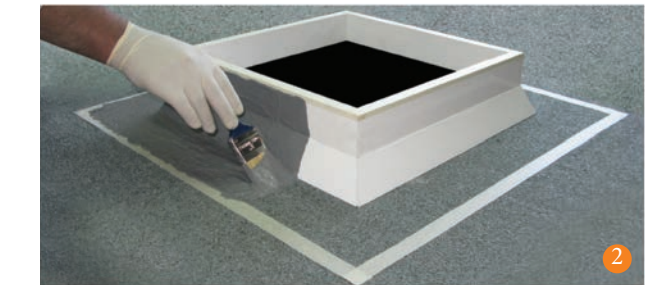
example 1: Lightdome



Mask the area to be waterproofed, with a masking tape in a sufficient size. Prepare the surface according to the surface preparation table.



Apply the second layer of MARISEAL DETAIL thickly with a flat brush and remove masking tape.



Apply the first layer of MARISEAL DETAIL with a flat brush and spread evenly.



If desired, for aesthetic reasons, slate chippings can be sprinkled in the wet coating in excess. Apply slight pressure by hand to stabilize the slate chippings.

example 2: Pipe Penetration



Mask the area to be waterproofed, with a masking tape in a sufficient size. Prepare the surface according to the surface preparation table.



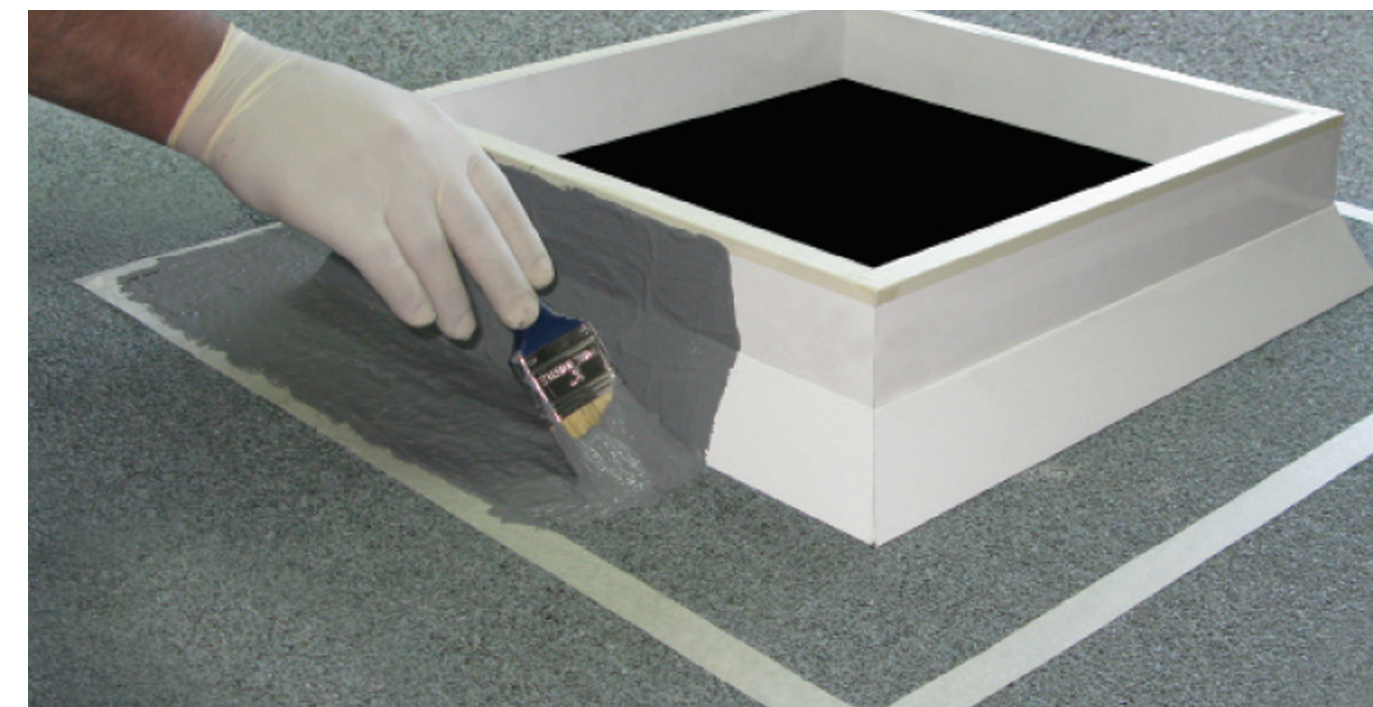
Apply the second layer of MARISEAL DETAIL thickly with a flat brush and remove masking tape.



Apply the first layer of MARISEAL DETAIL with a flat brush and spread evenly.



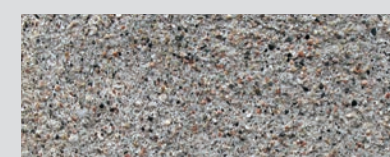
If desired, for aesthetic reasons, slate chippings can be incorporated in the coating in excess.



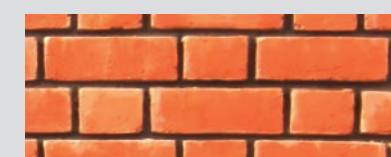
The **MARISEAL•DETAIL** can be used on:



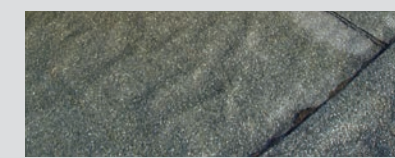
Beton



Mortar



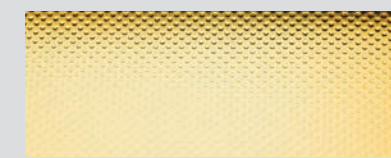
Brick



Mineral finished bitumenfelt



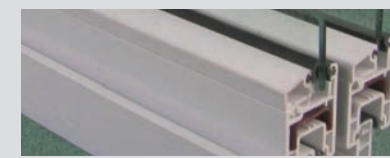
Plain Bitumenfelt



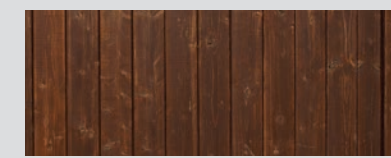
PVC and EPDM membrane



Metal



PVC and Aluminium profile



Wood, etc