

Uniclass L2123 + JR12 + JS10 + L71121 + L731	EPIC J3413
CI/SfB (52.5)	

ACO Water Management:

Civils + Infrastructure



*ACO StormBrixx – stormwater attenuation
and infiltration range*

Supply & Install Service



Introduction to the ACO Group

Throughout the world ACO branded drainage and surface water management systems are recognised for their innovative design, high quality manufacture, environmental excellence and industry leading performance.

Today the ACO Group has a research and production base that reaches across four continents. This unmatched resource pioneers the development of solutions that are tailored to individual applications, meeting the need for high performance, sustainable products that deliver optimum value throughout their operational life.



ACO Technologies plc

ACO operates as ACO Technologies plc in the United Kingdom. Founded over 30 years ago, the company has grown quickly on a reputation for design innovation and customer service.

There are now 2 divisions within ACO Technologies that serve every sector of the construction industry, providing solutions for applications as diverse as rail, highways, airports, landscaping, retail, distribution centres and environmentally sensitive projects.



To help architects, designers and contractors meet the legal requirements that now tightly control the way surface water is managed, ACO has created its unique system chain that combines a 'Surface Water Management Cycle' – Collect, Clean, Hold, Release, with the service support of Train, Design, Support and Care.

These processes enable ACO to offer a combination of product and service expertise necessary for the complete and sustainable management of surface water drainage.

Contents

Introducing the service	3
Best practice installation process	4
Service process and case study	5
ACO StormBrixx configurations	6-7



Introducing the ACO StormBrixx Supply and Install Service

Specialised support

Selection, delivery and installation of a Stormwater infiltration or attenuation system, such as ACO StormBrixx, is another added level of complexity to a construction project. ACO now offer a supply and install service that helps reduce this complexity and keeps the project on schedule.

Our Supply and Installers install attenuation and infiltration solutions everyday, so using this solution speeds up the installation process and ensures the tank is built to the best possible standards.

The team install to CIRIA guidelines on best practice and each tank comes with a warranty to reduce the liability taken on by main contractors and sub-contractors.



The ACO StormBrixx range



ACO StormBrixx SD

Void ratio:	97%
Max depth to invert:	4.5m
Short term vertical compressive strength:	350kN/m ²
Short term lateral compressive strength:	70kN/m ²
Accessibility:	Remote access



ACO StormBrixx HD

Void ratio:	95%
Max depth to invert:	6.0m
Short term vertical compressive strength:	455kN/m ²
Short term lateral compressive strength:	95kN/m ²
Accessibility:	Man access & remote access

Best practice installation process

Our Supply and Installers work to CIRIA 698 which states that all storage tanks should be fully sealed in accordance with waterproofing standards, using welded joints rather than adhesive tape.

Additionally the integrity of the seal needs to be checked through the use of non-destructive testing, to ensure it is leak-proof. Care needs to be taken during installation against damage of both the modular structure and the geotextile and/or geomembrane wrapping.

Our Supply and Installer trained operatives are certified welders working in accordance with the relevant CIRIA guidelines.



Stackable ACO StormBrixx units being transported to site



Geotextile membrane being laid



Installation of ACO StormBrixx with Man access units



Geotextiles being welded

- ▶ Our approved supply and installers bring all the components and manpower required for the install to site
- ▶ They lay the correct geotextile and geomembrane layers depending on the configuration
- ▶ They install the ACO StormBrixx geocellular units in the correct configuration
- ▶ The team encapsulate the geotextile around the constructed ACO StormBrixx and weld
- ▶ The installers ensure that all joints and welds are tested in accordance with CIRIA best practice
- ▶ They ensure the relevant man access or remote access units are in place for future maintenance procedures

Service process and case study

Service process

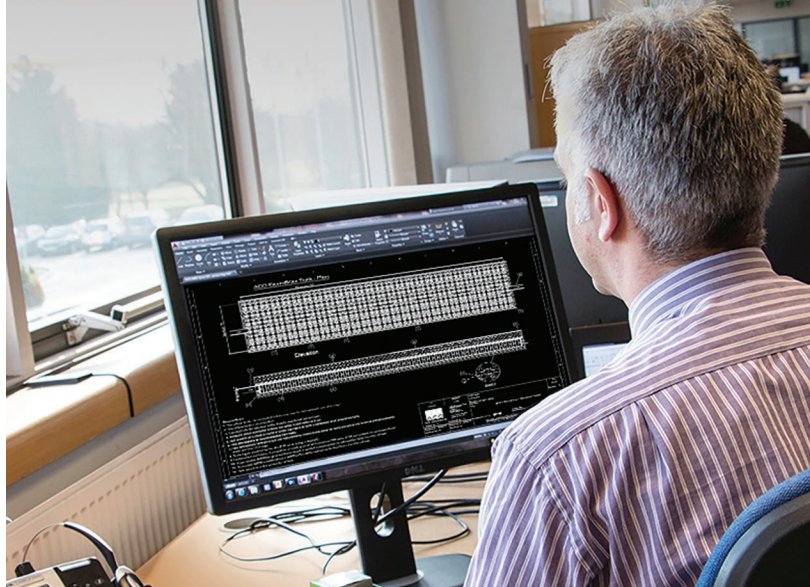
Discuss your particular project requirements for stormwater attenuation or infiltration systems with the ACO SuDS team

ACO will recommend an ACO StormBrixx solution: ACO StormBrixx SD or ACO StormBrixx HD, the appropriate configuration, soakaway/ offline or adoptable, and finally the access options

You then have an option to use a supply only quote from ACO or request a quote for a full supply and install. ACO will send on the project details, with your permission, to our supply and installers

The supply and installer will come back to you with the full quote for the work

They will buy all the components from ACO, arrange delivery and supply the manpower for when you need it



Contact ACO about the supply and install service: suds@aco.co.uk
Tel: 01462 816 666

Supply and Install case study

Project requirement: attenuation and strength

Project name:
DPD Parcel Distribution Centre

Client:
J Pullan & Sons Ltd



The solution needed to cope with the vertical and lateral load pressures from site traffic and a deep installation respectively, as well as trap silt and pollutants collected from the surface water.

The client's engineers turned to ACO StormBrixx HD, which was installed quickly and efficiently with ACO's supply and installer service. The 115.8 x 6 x 2.44m four layer Stormwater tank construction was made up of over 7000 half pieces delivered to site and installed under the edges of two car parking areas by the specialist team.

The ACO StormBrixx HD tank was then wrapped and sealed with impermeable geotextile membranes, ACOTex and ACOWrap. This allowed the main contractors to attach the ACO StormBrixx tank to a surface water system that collected and cleaned water before taking it into the ACO StormBrixx solution.



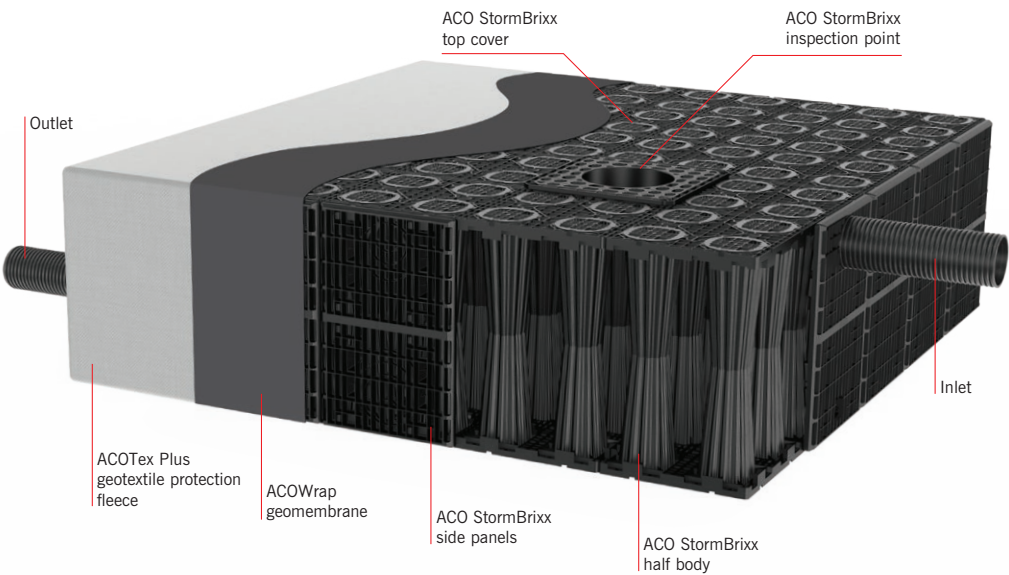
For more ACO StormBrixx case studies go to www.aco.co.uk/products/stormbrixx

ACO StormBrixx configurations

ACO StormBrixx SD can be configured for remote access and ACO StormBrixx HD for both man access and remote access. Our Supply and Installers are experienced in constructing all types of ACO StormBrixx configurations for attenuation and infiltration applications.

REMOTE ACCESS CONFIGURATION

ACO StormBrixx with remote access - SD



6

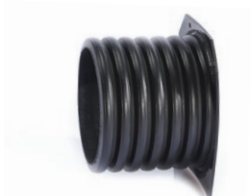


ACO StormBrixx components

The supply and installers will bring along all the components necessary to construct the relevant ACO StormBrixx system including side panels, geotextile wraps and access units.



ACO StormBrixx HD half body/layer piece



Horizontal pipe connector



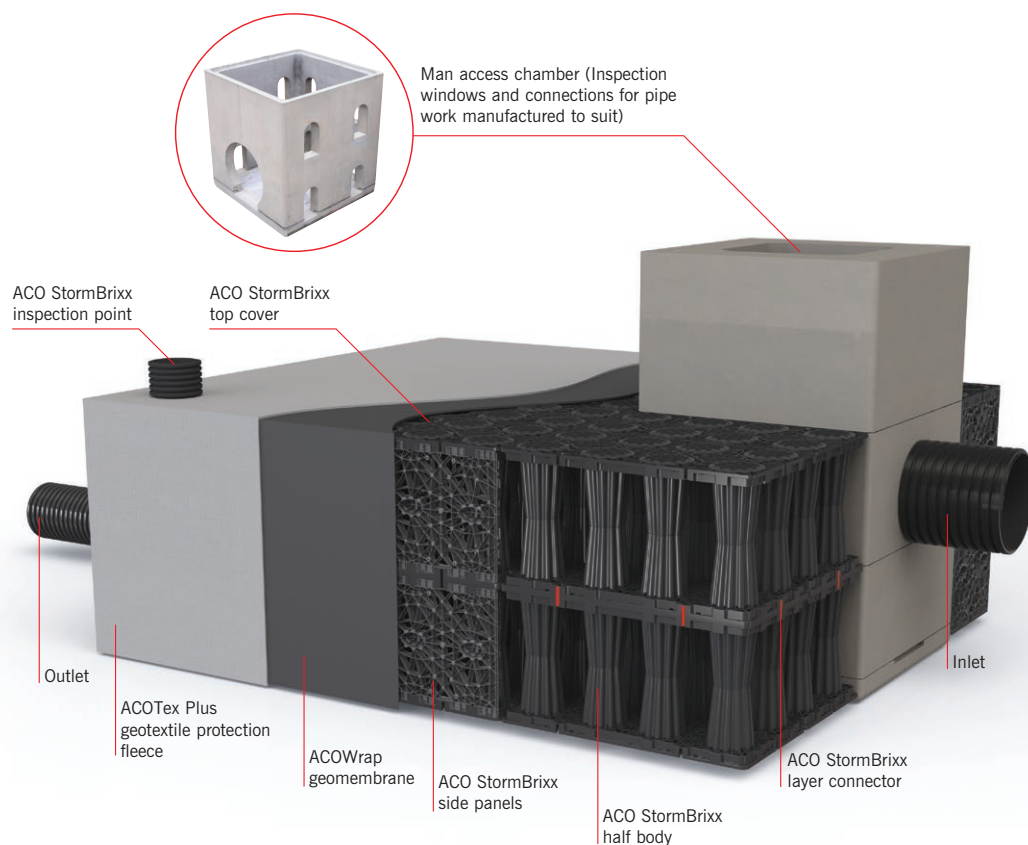
ACO StormBrixx SD remote access plate



Access chamber for HD and SD

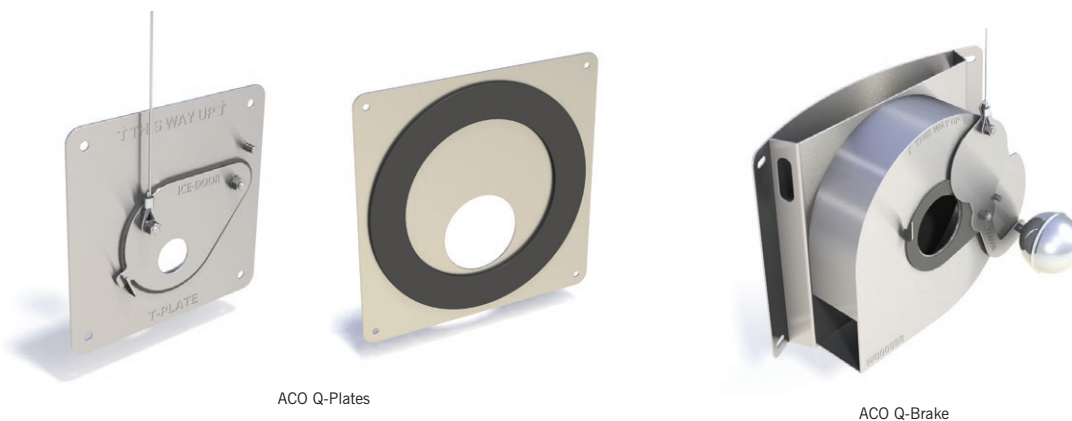
MAN ACCESS CONFIGURATION

ACO StormBrixx with man access – ideal for adaptable applications – HD



Complementary surface water flow control systems

ACO StormBrixx has a range of flow control systems that work with ACO StormBrixx



ACO Q-Brake & ACO Q-Plate Features

- ▶ Available with a drain down door
- ▶ Manufactured from 304 Stainless steel
- ▶ Easy to install
- ▶ Available with a flat or curved back
- ▶ Large orifice sizes minimise blockages
- ▶ Integrated into many hydraulic software packages

ACO Technologies plc

- ACO Water Management
Civils + Infrastructure
Building + Landscape
- ACO Building Drainage
- ACO Access
- ACO Sport
- ACO Wildlife

ACO Water Management

A division of ACO Technologies plc
ACO Business Park,
Hitchin Road,
Sheffield,
Bedfordshire
SG17 5TE

Tel: 01462 816666

Fax: 01462 815895

e-mail Project Pricing: awmprojects@aco.co.uk

e-mail Sales: customersupport@aco.co.uk

e-mail Technical: technical@aco.co.uk

Website: www.aco.co.uk

The ACO Group: A strong family you can depend on.

© November 2018 ACO Technologies plc. All reasonable care has been taken in compiling the information in this document. All recommendations and suggestions on the use of ACO products are made without guarantee since the conditions of use are beyond the control of the Company. It is the customer's responsibility to ensure that each product is fit for its intended purpose, and that the actual conditions of use are suitable. This brochure and any advice is provided by ACO Technologies plc (the Company) free of charge and accordingly on terms that no liability including liability for negligence will attach to the Company or its servants or agents arising out of or in connection with or in relation to this brochure or any such advice. Any goods supplied by the Company will be supplied solely upon its standard conditions of sale, copies of which are available on request. The Company's policy of continuous product development and improvement renders specifications liable to modification. Information provided in this brochure is therefore subject to change without prior notification.

ACO CARES ABOUT THE ENVIRONMENT

Printed on material certificated in accordance with the rules of the FSC who provide a means of assuring that products come from responsibly managed forest.



ISO 9001
FM 13502



ISO 14001
EMS 538781



OHSAS 18001
OHS 524145

