

Product portfolio

**We know washrooms.**  
For all your design and  
budget requirements.



**Venesta**



A photograph of a modern washroom interior. On the left, a row of bright orange cubicle doors extends into the distance. Each door has a small, circular silver handle. The floor is made of large, light-colored square tiles that reflect the light. On the right, a white wall features a rectangular mirror or panel. The lighting is bright and even, creating a clean and professional atmosphere.

## **We know washrooms.** After 120 years of innovation in partnership with our customers, we're still passionate about setting new standards of design, value, performance and reliability.

At Venesta, we live and breathe washrooms. Ever since the early days, innovation has been our inspiration, and product excellence our goal. With a commitment to setting the benchmark for design and performance, we've partnered with our clients in creating solutions that they can rely on to satisfy the most challenging and demanding of briefs.

Today, our expert knowledge and pioneering attitude have inspired our new range of commercial toilet cubicle and washroom systems. On the following pages you'll discover great product choice, value for money and uncompromising quality. As customer care is so important to us, you'll find we're breaking new ground in customer service too.

We invite you to see for yourself.



# We know our customers.

## From tailor-made design excellence to dedicated support and responsive service, everything we do is focused on you and what you need to get the job done.

### Your guarantee of quality

At Venesta, quality underscores everything we do. Our design team is dedicated to providing solutions that inspire, delight and perform superbly, even in the most demanding of environments.

All of our fittings are designed to suit our clients' specific requirements. Each component is considered in detail, in terms of both visual appearance and functionality. The same integrity applies in the way we select materials.

Our research and development team is continually raising the design benchmark and no product is launched without extensive testing. In fact, we've been at the forefront of industry invention for many years and have pioneered countless innovations.

### Durable and fit for purpose to suit your demands

Everyone expects a product that's fit for purpose but for Venesta, all of our products come with a rock solid 10 year guarantee. We make it our business to really understand your needs before providing the appropriate solution. That way we can be sure you're getting the right product for the job. Fit for purpose also means high standards of durability.

### Simple to install to make your life easier

Because we want to make your life as easy as possible, installation is at the forefront of our mind when we're creating new products. With simplicity built into every solution and thorough fixing instructions provided, we can ensure your washroom will be built and ready for use in the shortest of time frames. But don't forget, if you do experience any difficulties, our customer service team is here to resolve any issues quickly and efficiently.

### A team of experts focused on fulfilling your needs

At Venesta, we've built a team of people who are genuinely passionate about what they do. Many of us have been with the company for years and have built up a wealth of experience and product knowledge. We have CAD technicians to help with your drawings, project management professionals to ensure everything is on budget and on time, manufacturing experts who have a fine eye for detail and a friendly team that's committed to your total satisfaction.

### Equality Act 2010 compliant for your reassurance

At Venesta, we're an authority on Equality Act 2010 compliance. From access, to colours and finishes, we offer products that are fully compliant. What's more, because we understand the Equality Act 2010 inside out, we can provide an unrivalled level of support and advice, should you need it.

**The UK's first panel manufacturer to achieve 0% board waste to landfill**  
In 2019 we were extremely proud to announce that we achieved our target of 0% board waste going to landfill, with the help of our £1M state-of-the-art, 1.75MW, on-site biomass burner.

The heat generated from our burner provides heating to our entire manufacturing facility and office buildings, self-sufficiently, from waste offcuts.

As a manufacturer we're making the most of every portion of the materials that we use and are continually searching for ways to reduce energy consumption across all of our facilities. We know our responsibility and Venesta is totally committed to making a positive impact on the environment.



- 01 A friendly team of experts**

We're genuinely passionate about what we do and enjoy sharing our wealth of experience and product knowledge with you.
- 02 A fine eye for detail**

Our team is committed to your total job satisfaction, and that means getting every detail right, every time.
- 03 Our responsibility to the environment**

The heat generated from our biomass burner provides heating to our entire manufacturing facility and office buildings from waste offcuts.
- 04 Quality materials**

No product is launched without extensive testing and all materials are selected for quality and durability.



# We know good service.

## The quality of our products is only half the story. We know that excellent service can make all the difference to your satisfaction.

### Our 7-stage service plan

Whether it's a simple vanity unit or an extensive refit, you'll always find we go the extra mile to ensure you're happy. Here's our 7-stage service plan.

#### Stage 1 Specification

Our dedicated team of Specification Managers will help you choose the most cost effective and suitable products for your project without compromising on aesthetics and quality. To help you, our NBS specification writing service is available free of charge to guide you through all the detail. With our remote specification service, the process is quick and easy. Simply send over your drawings and your local Specification Manager will provide you with a comprehensive specification tailored to your project. Remember, whenever you need advice of any kind, just call our helpful sales team, who can also provide you with product literature and samples.

#### Stage 2 Estimating

Our estimating service levels have never been stronger; it's our aim to never deliver a late quotation. We pride ourselves on our attention to detail, so our comprehensive quotations always give the most detailed breakdowns of materials and prices. Don't forget, our dedicated technical helpline is here to give you technical support on all our products at any stage of the estimating and ordering process.

#### Stage 3 CAD

Once your order is placed, our highly skilled CAD Technicians will prepare layout drawings. At this stage, you'll be given a dedicated CAD Technician to work with you throughout your project. Everything from dimensions, colours and drawings can be sent for your approval prior to manufacture.

#### Stage 4 Manufacture and delivery

We're committed to delivering your order as soon as we possibly can, wherever you are in the World. With that in mind, we've invested £5m in state of the art machinery - allowing us to streamline our manufacturing process to make it more efficient than ever before. 100% on time, in full with no errors is our aim and we monitor our performance closely to ensure we can deliver on this.

#### Stage 5 Installation

Our highly responsive technical helpline is here to give you technical support throughout the installation process. It's worth remembering that although we're a supply only company, if you need fitting too, there are Accredited Installers we can recommend who have vast experience installing our products. Accredited Installers undergo a rigorous training and approval process so you can be assured of a top quality job.

#### Stage 6

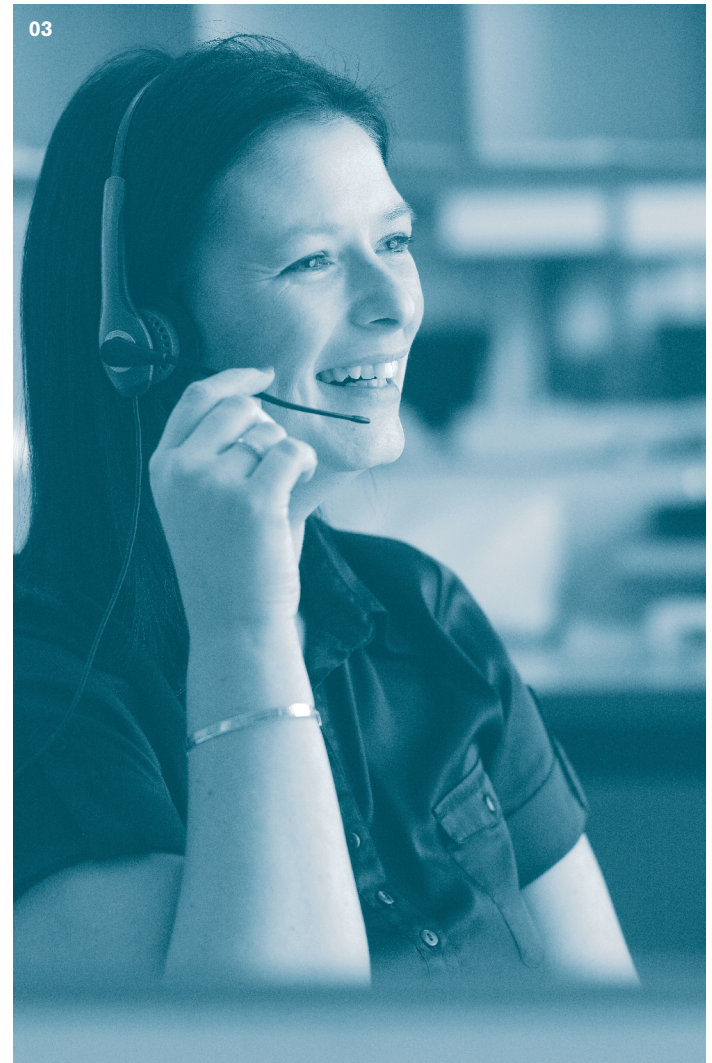
##### After sales support and spares

Once your products have been delivered, we'll give you your own dedicated point of contact to efficiently deal with all your after sales needs. Attentive and highly empathetic to your needs, they'll ensure you're completely happy at all times with our service.

#### Stage 7 Spares website

Our spares website has been created to make it as easy as possible for you to purchase spare items for your Venesta products. Whether it's a toilet cubicle lock, a pedestal leg, headrail end caps, washroom cubicle hinges or door buffers, it's easy to find what you are looking for on our Venesta spare parts website [www.venesta-spares.co.uk](http://www.venesta-spares.co.uk).

One final thing, at Venesta, we appreciate customer feedback; it helps us to ensure we can continue to improve what we do in line with your needs. So, if you have any comments on our products or service, we want to hear them. You can call us on 01474 353333.



#### 01 Sample service

Our helpful sales team can provide you with product literature and samples.

#### 02 Technical drawings

Everything from dimensions, colours and drawings can be sent for your approval prior to manufacture.

#### 03 Dedicated technical helpline

When you're ready to specify, our dedicated technical helpline offers you all the technical support you need.

#### 04 Design team

A specification manager will talk through your washroom requirements to help you choose the most suitable products for your project.



**Accessories** To complement your washroom, we've designed an inspiring range of accessories. From premium right through to budget, we promise you an accessory that's right for you.





# Accessories

Contemporary designs that do the job perfectly - that's our accessory range. To make your life easier, we have everything from soap dispensers to bins and door signs to coat hooks. It's all here ready for your selection.



**Liquid soap dispenser**  
White metal  
Wall mounted white metal liquid soap dispenser with key lock and 900ml refillable reservoir.  
H251 x W108 x D91mm  
**Code: 0302521**



**Liquid soap dispenser**  
Stainless steel  
Wall mounted stainless steel liquid soap dispenser with brushed satin finish, key lock and 900ml refillable reservoir.  
H251 x W108 x D91mm  
**Code: 0302525**



**Liquid soap dispenser**  
Grey plastic  
Wall mounted dispenser for liquid soap with with Grey ABS case and stainless steel cover with 900ml refillable reservoir.  
H255 x W130 x D120mm  
**Code: 0302513**



**Foam soap dispenser**  
Grey plastic  
Wall mounted dispenser for foam soap with with Grey ABS case and stainless steel cover with 900ml refillable reservoir.  
H255 x W130 x D120mm  
**Code: 0302514**



**Liquid soap dispenser**  
White plastic  
Wall mounted dispenser for liquid soap with white ABS case and 900ml refillable reservoir.  
H250 x W115 x D115mm  
**Code: 0302540**



**Liquid soap dispenser**  
Polished chrome  
Basin or vanity mounted liquid soap dispenser with polished chrome finish and 900ml refillable soap bottle.  
H85 x Ø44 x L140mm  
**Code: 0302532**



**Under mounted basin liquid soap dispenser**  
Polished chrome  
Polished chrome liquid soap dispenser with 500ml soap bottle for basins mounted under vanity top.  
H60 x W105 x Ø50mm  
**Code: 0302014**



**Top mounted basin liquid soap dispenser**  
Polished chrome  
Polished chrome liquid soap dispenser with 500ml soap bottle and spacer ring for basins mounted on vanity top.  
H80 x W105 x Ø50mm  
**Code: 0302015**



**Duct wall soap dispenser**  
Polished chrome  
Duct wall push button liquid soap dispenser with polished chrome finish.  
W125 x Ø50mm x Ø25mm  
**Code: 0362006**



**Cylindrical liquid soap dispenser**  
Stainless steel  
Wall mounted stainless steel cylindrical soap dispenser with brushed satin finish.  
H193 x Ø63 x D88mm  
**Code: 0302508**



**Plastic multi-feed soap dispensing system**  
Multi-feed liquid soap dispenser for use with basin/vanity top, vessel basin or duct wall mounted soap dispensers with 5 litre refillable soap bottle.  
H283 x W190 x D130mm  
**Code: 0362007**



**Toilet seat sanitiser**  
Stainless steel  
A compact sanitiser unit with a high quality brushed stainless steel finish.  
H196 x W98 x D97mm  
**Code: 0302501**



**Paper towel dispenser**  
White plastic  
Wall mounted white ABS towel dispenser for C-fold or interfold paper towels.  
H425 x W290 x D145mm  
**Code: 0302537**



**Paper towel dispenser**  
White metal  
Wall mounted white metal paper towel dispenser for C-fold or interfold towels with white powder coated finish and key lock.  
H300 x W262 x D128mm  
**Code: 0302522**



**Paper towel dispenser**  
Stainless steel  
Wall mounted stainless steel paper towel dispenser for C-fold or interfold towels with brushed satin finish and key lock.  
H300 x W262 x D128mm  
**Code: 0302526**



**Paper towel dispenser**  
Black plastic  
Wall mounted towel dispenser for C-fold or interfold paper towels made from Black ABS with stainless steel cover.  
H325 x W325 x D150mm  
**Code: 0302519**



Accessories



**Behind mirror paper towel dispenser**  
Stainless steel  
Stainless steel paper towel dispenser mounted behind mirror with hinged dispensing flaps for interfold towels. H464 x W292 x D107mm  
**Code: 0302531**



**Elite paper towel dispenser**  
Stainless steel  
Recessed mounted dispenser for C-fold or interfold paper towels with brushed satin stainless steel door and key lock. H510 x W340 x D118mm  
**Code: 0302045**



**Elite paper towel waste bin**  
Stainless steel  
Recessed mounted stainless steel paper towel waste bin with brushed satin finish, door latch and integral plastic liner. H835 x W340 x D118mm  
**Code: 0302046**



**Paper towel 50 litre waste bin**  
Stainless steel  
Floor standing stainless steel paper towel waste bin without lid. H602 x W301 x D301mm  
**Code: 0302529**



**Paper towel 30 litre waste bin**  
Stainless steel  
Stainless steel paper towel waste bin with brushed satin finish, bag holder and wall fixings. H527 x W344 x D161mm  
**Code: 0302528**



**Lockable toilet roll holder**  
Light/Dark Grey plastic  
Light/Dark Grey nylon single toilet roll holder with lockable arm and concealed wall fixings. H130 x W155 x D25mm  
**Code: Light Grey 0300403**  
**Dark Grey 0300147**



**Toilet roll holder**  
Light/Dark Grey plastic  
Light/Dark Grey nylon single toilet roll holder with concealed wall fixings. H130 x W155 x D25mm  
**Code: Light Grey 0300303**  
**Dark Grey 0300146**



**Toilet roll holder**  
Satin chrome aluminium  
Cast aluminium toilet roll holder with lockable single core. Available in satin chrome aluminium finish. H50 x W175 x D90mm  
**Code: 0380070**



**Single toilet roll holder**  
Stainless steel  
Stainless steel single toilet roll holder with concealed wall fixings. H85 x W141 x D40mm  
**Code: 0302509**



**Double toilet roll holder**  
Stainless steel  
Stainless steel double toilet roll holder with concealed wall fixings. H85 x W254 x D40mm  
**Code: 0302510**



**Jumbo toilet roll dispenser**  
Stainless steel  
Stainless steel jumbo toilet roll dispenser with brushed satin finish, key lock and viewing slot. Ø320 x H320 x D125mm  
**Code: 0302500**



**Jumbo toilet roll dispenser**  
White metal  
White powder coated metal jumbo toilet roll dispenser with key lock and viewing slot. Ø320 x H320 x D125mm  
**Code: 0302523**



**Midi-jumbo toilet roll dispenser**  
Black plastic  
Wall mounted dispenser for jumbo toilet roll paper with Black ABS case and stainless steel cover plus spare stub roll. H350 x W260 x D140mm  
**Code: 0302518**



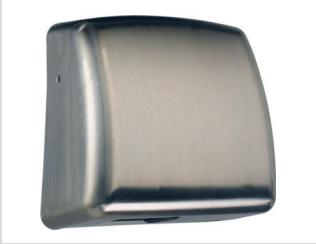
**Midi-jumbo toilet roll dispenser**  
White plastic  
Wall mounted white ABS jumbo toilet roll dispenser. H325 x W280 x D145mm  
**Code: 0302538**



**Toilet tissue dispenser**  
White plastic  
Wall mounted white ABS toilet tissue dispenser. H275 x W150 x D130mm  
**Code: 0302539**



**Automatic warm air hand dryer**  
White metal  
Surface mounted automatic warm air hand dryer with white painted cast aluminium case. H206 x W348 x D185mm  
**Code: 0302005**



**Automatic warm air hand dryer**  
Stainless steel  
Surface mounted automatic warm air hand dryer with brushed satin stainless steel case. H277 x W274 x D135mm  
**Code: 0302019**



**Automatic high speed hand dryer**  
White metal  
Compact high speed hand dryer with low energy consumption, touch-free start/stop sensor and white cast aluminium cover. H300 x W280 x D175mm  
**Code: 0302533**



**Automatic high speed hand dryer**  
Metallic Silver  
Compact high speed hand dryer with low energy consumption, touch-free start/stop sensor and metallic silver cast aluminium cover. H300 x W280 x D175mm  
**Code: 0302535**



**Slimline warm air hand dryer**  
Stainless steel  
Surface mounted slimline warm air hand dryer, with low energy twin blowers and touch-free start/stop sensors. H345 x W350 x D100mm  
**Code: 0302520**



**Automatic jet hand dryer**  
Metallic Silver  
High speed jet hand dryer with metallic silver ABS cover, auto start/stop sensors and low energy consumption. H670 x W300 x D219mm  
**Code: 0302536**



**Automatic jet hand dryer**  
White  
High speed jet hand dryer with white ABS cover, auto start/stop sensors and low energy consumption. H650 x W292 x D250mm  
**Code: 0302534**



**Elite warm air hand dryer**  
Stainless steel  
Recessed mounted warm air hand dryer with brushed satin stainless steel cover and auto start/stop sensors. H579 x W382 x D116mm  
**Code: 0302047**



**Automatic hand wash station**  
Brushed satin stainless steel  
Recessed mounted hand wash station with auto hand rinse, soap and warm air dryer. Brushed satin stainless steel case. H815 x W422 x D175mm  
**Code: 0302024**



# Accessories



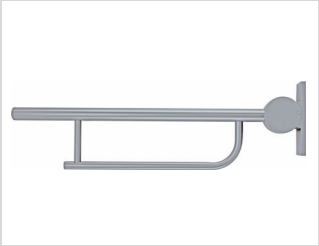
**Hinged support rail**  
White  
Hinged support rail for use where facilities for people with disabilities or infirmities must be provided.  
H260 x W100 x D800mm  
**Code: S6467AC**



**Back support rail**  
Satin  
Aluminium back rest 400mm long with brushed satin stainless steel finish, concealed fixings and white vinyl pad.  
W400 x D310 x Ø35mm  
**Code: S6466MY and S688467**



**Back support rail**  
White  
Aluminium back rest 400mm long with white polyester coated finish, concealed fixings and white vinyl pad.  
W400 x D310 x Ø35mm  
**Code: Rail only S6466AC**  
**Pad only S688467**



**Hinged support rail**  
Satin/White  
Aluminium support rail in polished stainless steel with hinged support arm 800mm long and concealed fixing plate. Also available in satin and white polyester coated finish.  
L800 x H242 x W110mm  
**Code: S6360MY**



**Door handle**  
Satin anodised  
Satin anodised aluminium pull door handles.  
L225 x D45 x Ø19mm  
**Code: Single 0182222**  
**Pair 0182227**



**Door handle**  
Satin anodised  
Satin anodised aluminium pull door handles.  
L400 x D45 x Ø19mm  
**Code: Single 0182225**  
**Pair 0182226**



**Door handle**  
Satin Stainless steel  
Stainless steel pull door handles (pair) with brushed satin finish and concealed fixings.  
H619 x Ø19 x D65mm  
**Code: 0302511**



**Cubicle door pull handle**  
Satin Stainless Steel  
Stainless steel cubicle door pull handle with satin finish and concealed fixings.  
L225 x D45 x Ø19mm  
**Code: Single 0182221**  
**Pair 0182218**



**Cubicle door pull handle**  
Satin Stainless Steel  
Stainless steel cubicle door pull handle with satin finish and concealed fixings.  
L400 x D45 x Ø19mm  
**Code: Single 0182216**  
**Pair 0182232**



**Cubicle door pull handles**  
Polished aluminium  
Pair of polished aluminium cubicle door handles with a polished anodised powder coated finish.  
H175 x W150 x D80mm  
**Code: 0500101**



**Grab rail/fixing kit**  
White  
Aluminium grab rail 600mm long with white polyester coated finish and concealed fixings. Fixing plate kit for cubicle mounted grab rails.  
W600 x D95 x Ø80/Ø32  
**Code: S6454AC**  
**Fixing kit 0500021**



**Grab rail/fixing kit**  
Polished aluminium  
Polished aluminium grab rail 600mm long with concealed fixings. Fixing plate kit for cubicle mounted grab rails.  
W600 x D95 x Ø80/Ø32  
**Code: S6454MY**  
**Fixing kit 0500021**



**Toilet brush and holder**  
Stainless steel  
Wall mounted stainless steel toilet brush and holder in brushed satin finish.  
H396 x W89 x D115mm  
**Code: 0302512**



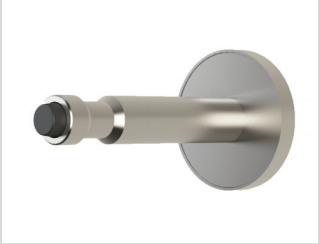
**Coat hook**  
Light/Dark Grey/White plastic  
Dark Grey nylon lightweight coat hook with concealed fixings. Also available in Light Grey and White.  
H50 x W20 x D38mm  
**Code: Light Grey 0300139**  
**Dark Grey 0300137**  
**White 0300201**



**Coat hook 30mm**  
Satin Stainless steel  
Stainless steel contemporary coat hook with concealed fixings and precision made groove retained buffer. Load tested to 30kg.  
Ø13mm x D30mm  
**Code: MFC / HPL / CC CH30T**  
**SLG CH30SG**



**Coat hook 65mm**  
Satin Stainless steel  
Stainless steel contemporary coat hook with concealed fixings and precision made groove retained buffer. Load tested to 30kg.  
Ø50 x D65mm  
**Code: MFC / HPL / CC CH65T**  
**SGL CH65SG**



**Coat hook 90mm**  
Satin Stainless Steel  
Stainless steel contemporary coat hook with concealed fixings and precision made groove retained buffer. Load tested to 30kg. Glass fixing kit available.  
Ø50 x D90mm  
**Code: MFC / HPL / CC CH90T**  
**SGL CH90SG**



**Female WC door sign**  
Stainless steel  
Stainless steel, self adhesive Female WC door sign.  
Ø76mm  
**Code: 0302504**



**Male WC door sign**  
Stainless steel  
Stainless steel, self adhesive Male WC door sign.  
Ø76mm  
**Code: 0302503**



**Unisex WC door sign**  
Stainless steel  
Stainless steel, self adhesive Unisex WC door sign.  
Ø76mm  
**Code: 0302505**



**Baby change WC door sign**  
Stainless steel  
Stainless steel, self adhesive Baby Change WC door sign.  
Ø76mm  
**Code: 0302507**



**Disabled WC door sign**  
Stainless steel  
Stainless steel, self adhesive Disabled WC door sign.  
Ø76mm  
**Code: 0302506**



# We know our responsibility.

## Your world is our world. At Venesta, we treat the environment the way we treat our customers, with care and commitment.

**Managing our waste**

**Targeting zero waste**

Waste is an inevitable part of any manufacturing process, but there are ways to ensure it doesn't become an environmental headache. In 2016 we set ourselves a challenge to reduce and if possible, totally eliminate our waste.

We are incredibly proud to say that in 2019 we became the first UK washroom manufacturer to achieve our target of 0% board waste to landfill.

A £1M investment into a new, state-of-the-art 1.75MW biomass burner has enabled us to eliminate MDF and HPL board waste; our smaller burner incinerates non-biomass waste like Solid Grade Laminate.

The cost of energy and the issue of carbon emissions are high on our environmental agenda and we are continually searching for ways to reduce energy consumption. Our biomass facility generates enough renewable energy to independently heat our entire manufacturing facility and office buildings.

We know our responsibility and Venesta is totally committed to making a positive impact on the environment. We treat the environment the way we treat our customers, with care and commitment.

**FSC® certification**

**Take care of the forest**

As our customer, you can be confident that our materials and products have been checked at every stage of processing to ensure we are sourcing from sustainable and ethical sources.

We only purchase wood-based panel products from suppliers who are independently certified from either FSC (Forest Stewardship Council) or PEFC (Programme for the Endorsement of Forest Certification).

Our V3 Veneer range is FSC MIX certified with a full chain of custody available for our customers.

Laminate product materials are supplied to us as an FSC accredited product under 'FSC Controlled Wood'. Certificates are available to our customers upon request to demonstrate this.



Learn about our biomass burner which has helped us achieve 0% board waste to landfill by visiting our YouTube channel.

**Reducing our travel**

**Decreasing carbon emissions**

As part of our ongoing commitment to improve our carbon footprint, we've tasked ourselves with reducing employees' travelling time. All staff are encouraged to use public transport wherever possible and we've installed video conferencing facilities on all of our sites to allow meetings to be held without the need for travel.



The mark of responsible forestry  
FSC® C137315



**01-02 Waste management**

Biomass burner turns production waste into factory and office heating.

**03 Recycling**

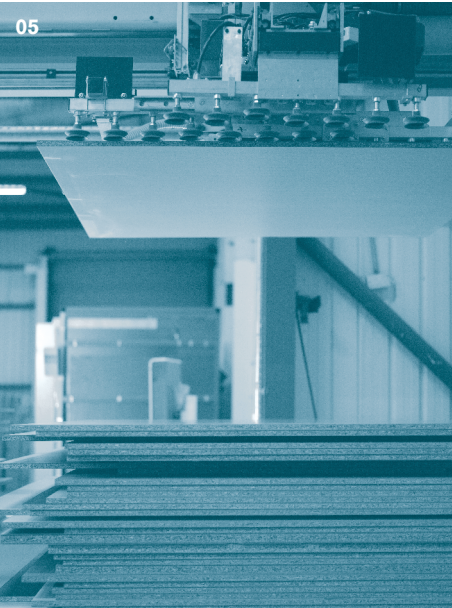
Wherever possible, all off-cuts are worked back into production for smaller product components.

**04 Boilers**

Our biomass burner has helped us achieve our 0% waste to landfill target.

**05 Efficiency**

Robotic handling systems ensure maximum board utilisation is achieved.

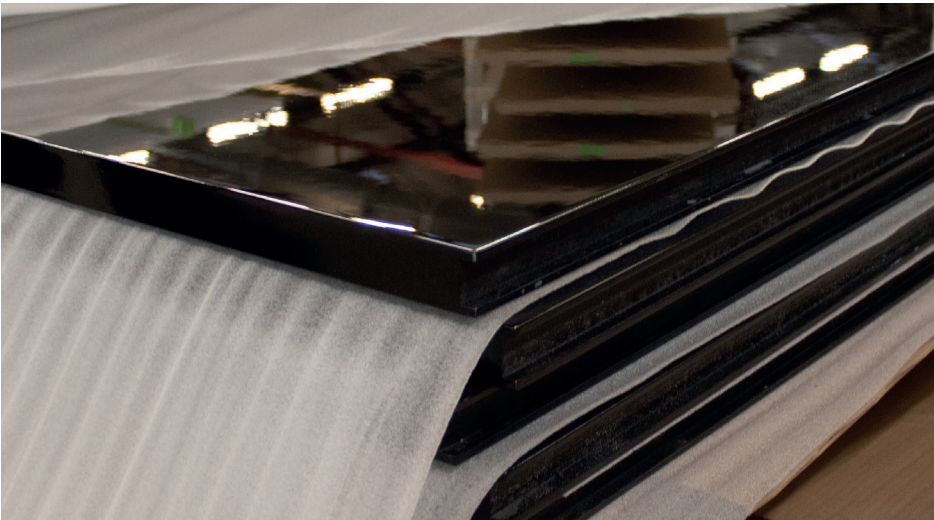




# We know washrooms. Your partner, every step of the way.

Venesta is passionate about ensuring you get the very best product and service, whatever the size of the project. That's why, from your first enquiry through to installation and beyond, you'll have a team of talented and committed experts working tirelessly to ensure you're happy and satisfied.

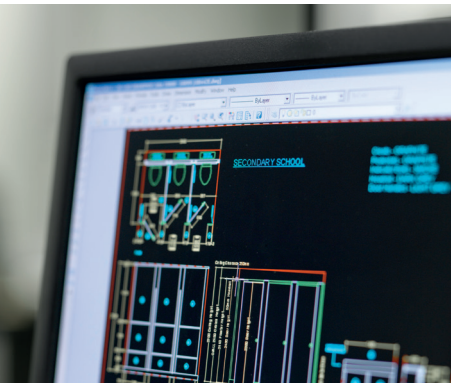
At Venesta, we believe it's our people that make the real difference to our business success. Everyone is an expert in their field, from our highly creative CAD team to our efficient and responsive Project Managers and our dedicated manufacturing team. Their experience and professionalism is what underpins the quality of our customer relationships.



## How can we help you?

Our friendly and knowledgeable team is waiting to advise you on your project. Call us on **01474 353333**.

Alternatively, you can see all our products online at **[www.venesta.co.uk](http://www.venesta.co.uk)**. We look forward to working with you.





**[www.venesta.co.uk](http://www.venesta.co.uk)**

**For help and advice on choosing  
your washroom, visit our website  
for a comprehensive guide.**

**Our address**

1st Floor,  
Units 19-23,  
St George's Square,  
St George's Centre,  
Gravesend,  
Kent, DA11 0TA  
United Kingdom

Telephone  
01474 353333

Email  
[marketing@venesta.co.uk](mailto:marketing@venesta.co.uk)

Republic of Ireland  
Telephone  
1 800 931 880

Middle East  
Telephone  
+971 6 5533361

[www.venesta.co.uk](http://www.venesta.co.uk)

[www.venesta-spares.co.uk](http://www.venesta-spares.co.uk)