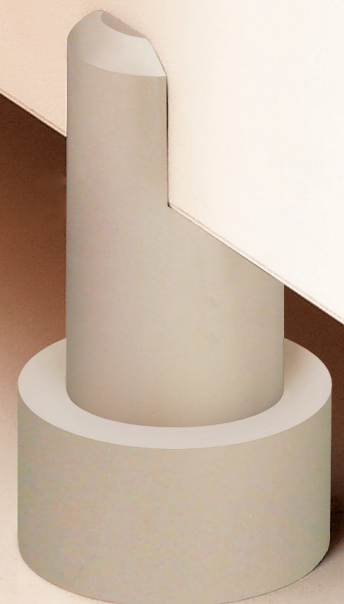


Product portfolio

We know washrooms.
For all your design and
budget requirements.



Venesta



We know washrooms. After 120 years of innovation in partnership with our customers, we're still passionate about setting new standards of design, value, performance and reliability.

At Venesta, we live and breathe washrooms. Ever since the early days, innovation has been our inspiration, and product excellence our goal. With a commitment to setting the benchmark for design and performance, we've partnered with our clients in creating solutions that they can rely on to satisfy the most challenging and demanding of briefs.

Today, our expert knowledge and pioneering attitude have inspired our new range of commercial toilet cubicle and washroom systems. On the following pages you'll discover great product choice, value for money and uncompromising quality. As customer care is so important to us, you'll find we're breaking new ground in customer service too.

We invite you to see for yourself.

We know our customers.

From tailor-made design excellence to dedicated support and responsive service, everything we do is focused on you and what you need to get the job done.

Your guarantee of quality

At Venesta, quality underscores everything we do. Our design team is dedicated to providing solutions that inspire, delight and perform superbly, even in the most demanding of environments.

All of our fittings are designed to suit our clients' specific requirements. Each component is considered in detail, in terms of both visual appearance and functionality. The same integrity applies in the way we select materials.

Our research and development team is continually raising the design benchmark and no product is launched without extensive testing. In fact, we've been at the forefront of industry invention for many years and have pioneered countless innovations.

Durable and fit for purpose to suit your demands

Everyone expects a product that's fit for purpose but for Venesta, all of our products come with a rock solid 10 year guarantee. We make it our business to really understand your needs before providing the appropriate solution. That way we can be sure you're getting the right product for the job. Fit for purpose also means high standards of durability.

Simple to install to make your life easier

Because we want to make your life as easy as possible, installation is at the forefront of our mind when we're creating new products. With simplicity built into every solution and thorough fixing instructions provided, we can ensure your washroom will be built and ready for use in the shortest of time frames. But don't forget, if you do experience any difficulties, our customer service team is here to resolve any issues quickly and efficiently.

A team of experts focused on fulfilling your needs

At Venesta, we've built a team of people who are genuinely passionate about what they do. Many of us have been with the company for years and have built up a wealth of experience and product knowledge. We have CAD technicians to help with your drawings, project management professionals to ensure everything is on budget and on time, manufacturing experts who have a fine eye for detail and a friendly team that's committed to your total satisfaction.

Equality Act 2010 compliant for your reassurance

At Venesta, we're an authority on Equality Act 2010 compliance. From access, to colours and finishes, we offer products that are fully compliant. What's more, because we understand the Equality Act 2010 inside out, we can provide an unrivalled level of support and advice, should you need it.

The UK's first panel manufacturer to achieve 0% board waste to landfill
In 2019 we were extremely proud to announce that we achieved our target of 0% board waste going to landfill, with the help of our £1M state-of-the-art, 1.75MW, on-site biomass burner.

The heat generated from our burner provides heating to our entire manufacturing facility and office buildings, self-sufficiently, from waste offcuts.

As a manufacturer we're making the most of every portion of the materials that we use and are continually searching for ways to reduce energy consumption across all of our facilities. We know our responsibility and Venesta is totally committed to making a positive impact on the environment.



01 A friendly team of experts

We're genuinely passionate about what we do and enjoy sharing our wealth of experience and product knowledge with you.

02 A fine eye for detail

Our team is committed to your total job satisfaction, and that means getting every detail right, every time.

03 Our responsibility to the environment

The heat generated from our biomass burner provides heating to our entire manufacturing facility and office buildings from waste offcuts.

04 Quality materials

No product is launched without extensive testing and all materials are selected for quality and durability.

We know good service.

The quality of our products is only half the story. We know that excellent service can make all the difference to your satisfaction.

Our 7-stage service plan

Whether it's a simple vanity unit or an extensive refit, you'll always find we go the extra mile to ensure you're happy. Here's our 7-stage service plan.

Stage 1 Specification

Our dedicated team of Specification Managers will help you choose the most cost effective and suitable products for your project without compromising on aesthetics and quality. To help you, our NBS specification writing service is available free of charge to guide you through all the detail. With our remote specification service, the process is quick and easy. Simply send over your drawings and your local Specification Manager will provide you with a comprehensive specification tailored to your project. Remember, whenever you need advice of any kind, just call our helpful sales team, who can also provide you with product literature and samples.

Stage 2 Estimating

Our estimating service levels have never been stronger; it's our aim to never deliver a late quotation. We pride ourselves on our attention to detail, so our comprehensive quotations always give the most detailed breakdowns of materials and prices. Don't forget, our dedicated technical helpline is here to give you technical support on all our products at any stage of the estimating and ordering process.

Stage 3 CAD

Once your order is placed, our highly skilled CAD Technicians will prepare layout drawings. At this stage, you'll be given a dedicated CAD Technician to work with you throughout your project. Everything from dimensions, colours and drawings can be sent for your approval prior to manufacture.

Stage 4 Manufacture and delivery

We're committed to delivering your order as soon as we possibly can, wherever you are in the World. With that in mind, we've invested £5m in state of the art machinery - allowing us to streamline our manufacturing process to make it more efficient than ever before. 100% on time, in full with no errors is our aim and we monitor our performance closely to ensure we can deliver on this.

Stage 5 Installation

Our highly responsive technical helpline is here to give you technical support throughout the installation process. It's worth remembering that although we're a supply only company, if you need fitting too, there are Accredited Installers we can recommend who have vast experience installing our products. Accredited Installers undergo a rigorous training and approval process so you can be assured of a top quality job.

Stage 6

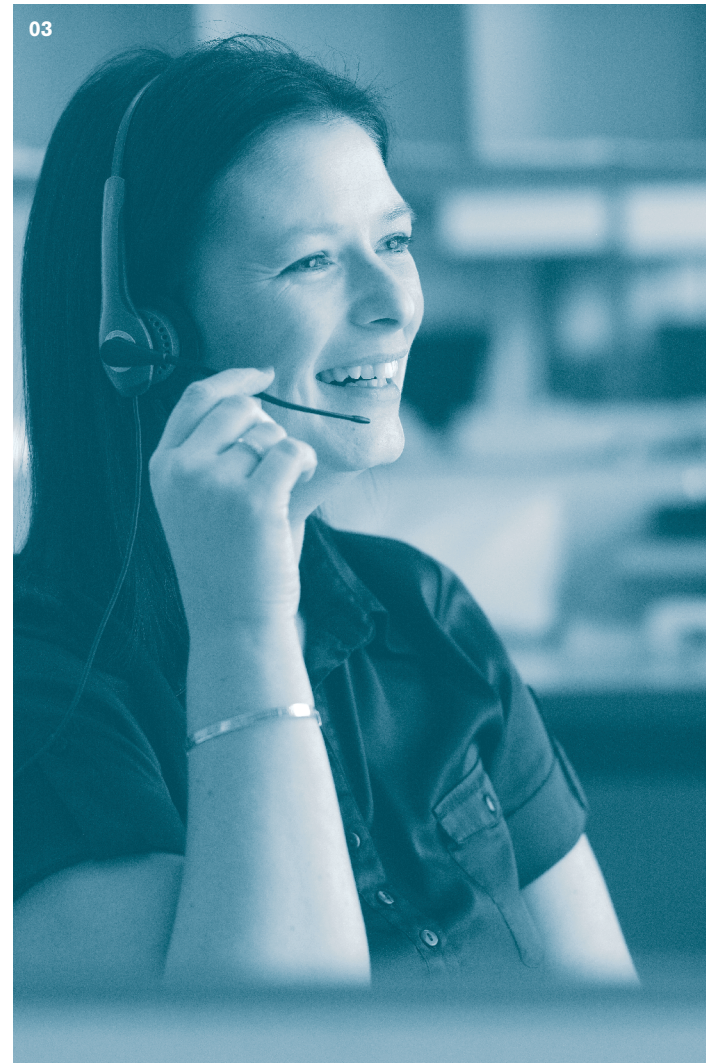
After sales support and spares

Once your products have been delivered, we'll give you your own dedicated point of contact to efficiently deal with all your after sales needs. Attentive and highly empathetic to your needs, they'll ensure you're completely happy at all times with our service.

Stage 7 Spares website

Our spares website has been created to make it as easy as possible for you to purchase spare items for your Venesta products. Whether it's a toilet cubicle lock, a pedestal leg, headrail end caps, washroom cubicle hinges or door buffers, it's easy to find what you are looking for on our Venesta spare parts website www.venesta-spares.co.uk.

One final thing, at Venesta, we appreciate customer feedback; it helps us to ensure we can continue to improve what we do in line with your needs. So, if you have any comments on our products or service, we want to hear them. You can call us on 01474 353333.



01 Sample service

Our helpful sales team can provide you with product literature and samples.

02 Technical drawings

Everything from dimensions, colours and drawings can be sent for your approval prior to manufacture.

03 Dedicated technical helpline

When you're ready to specify, our dedicated technical helpline offers you all the technical support you need.

04 Design team

A specification manager will talk through your washroom requirements to help you choose the most suitable products for your project.

Infinite The ultimate in classic modernity, Infinite delivers sleek, clean lines, flush fronts and minimalist fittings. This is a contemporary, high quality solution, perfect for the most stylish environments.

Infinite

Main image

Infinite Veneer in straight grain Fumed Oak, Infinite ColourCoat in White RAL9003, Rapiduct in straight grain Fumed Oak.

See p100-101 for Infinite technical specifications.

Infinite Veneer

Real wood veneers offer a rich, earthy tone to spice up a modern washroom with warmth and texture.



01 Door and pilaster appear to be floating.

02 Stainless steel indicator bolt fascia.

See p100-101 for Infinite technical specifications.

Main image
Infinite Veneer in horizontal grain American Black Walnut, bespoke Dupont Zodiaq vanity in Chalk White.

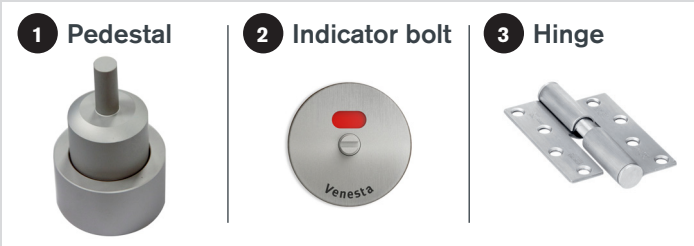
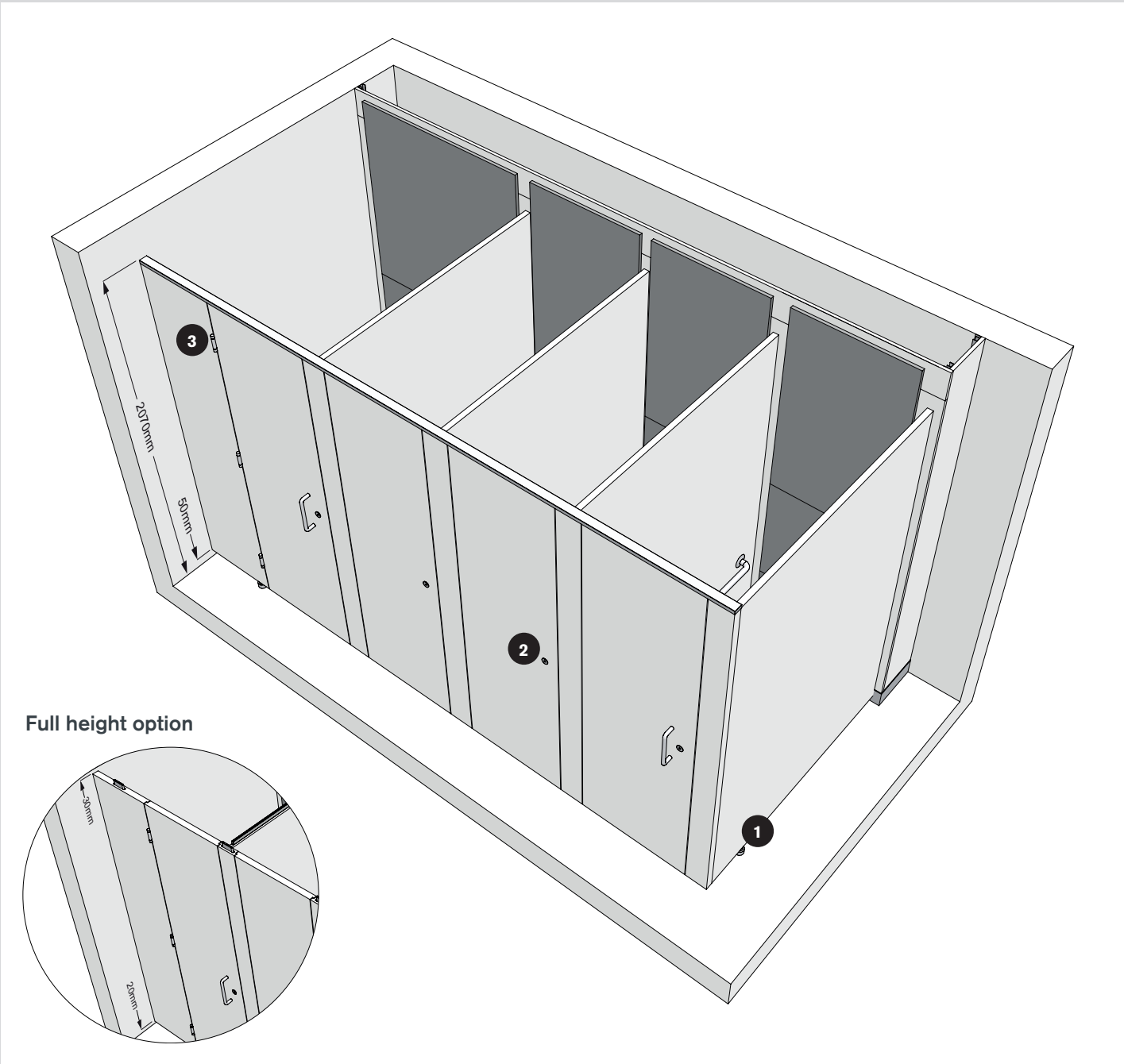
For the full choice of veneers, please visit our website at www.venesta.co.uk, contact our sales team or refer to our Colour Selector.



Key features

- Flush fronted
- Minimal look and clean lines
- Real wood veneer
- Stainless steel and satin anodised aluminium fittings
- Floating appearance

Technical Specifying Infinite



Dimensions

Overall height
2070mm

Full height
2600mm

Bespoke heights available.

Full height available, 30mm ceiling clearance and 20mm floor clearance required.

Floor clearance
50mm, with headrail.

Ceiling clearance
20mm, with headrail.

Maximum depth	
Veneer*	2045mm
ColourCoat	2045mm
ColourCoat High Gloss	2045mm
HPL	2045mm

*Max depth dependent on veneer choice.

Bespoke
Infinite cubicles can be specified in various configurations, the images on pages 96-99 are indicative of what can be achieved using a combination of components available.

Performance

Available in three material options, Infinite is suitable for even the most prestigious environments allowing you to specify with confidence.

Veneer
Doors and pilasters are 44mm nominal thickness chipboard faced with real wood veneer, partitions are 25mm MDF core faced with real wood veneer. Door, pilaster and partition edging in complementing ABS from the Venesta standard colour range.

ColourCoat
Doors and pilasters are 44mm nominal thickness MDF, partitions are 25mm MDF, both are sprayed with a coat of primer and finished with 20% high gloss pigmented lacquer. Edges are sprayed with one coat of primer and finished with pigmented polyurethane lacquer.

ColourCoat High Gloss
Doors and pilasters are 44mm nominal thickness MDF, partitions are 25mm MDF, both are sprayed with a coat of primer and finished with 80% high gloss pigmented lacquer. Edges are sprayed with one coat of primer and finished with high gloss pigmented lacquer.

HPL
Doors and pilasters are 44mm nominal thickness with an MDF core, partitions are 25mm nominal thickness. Edges lipped with matching ABS.

Detailing

Panels and doors
Available in Veneer, ColourCoat and ColourCoat High Gloss.

Colour finish
Veneer
Wide range of Alpi veneer options (varying price points).
ColourCoat
Unlimited ColourCoat options - any RAL classic colour, excluding metallic and fluorescent colours.
ColourCoat High Gloss
Unlimited ColourCoat High Gloss options - any RAL classic colour, excluding metallic and fluorescent colours.

HPL
34 colours from the standard colour range.
Cubicle hardware
Stainless steel & satin anodised aluminium.

Edge treatment
Veneer
Complementing ABS edging from the Venesta standard colour range.
ColourCoat
Edges are sprayed with one coat of primer and finished with pigmented polyurethane lacquer.

ColourCoat High Gloss
Edges are sprayed with one coat of primer and finished with high gloss pigmented lacquer.
HPL
Matching ABS lipping.

Headrail
Slimline aluminium profile with satin anodised finish, 3 part fixing system which allows cubicles to finish 20mm below ceiling height. Stainless steel end cap.

Cubicle hardware
Hinge
Stainless steel rise and fall butt hinge.

Wall fixing
Satin anodised aluminium gravity channel.

Indicator bolt
Stainless steel lever operated slimline mortise lock and keep with circular face plate and emergency release facility.

Pedestal
Adjustable aluminium pedestal in satin anodised finish.

Accessories
Coat hooks & toilet roll holders available.

We know our responsibility.

Your world is our world. At Venesta, we treat the environment the way we treat our customers, with care and commitment.

Managing our waste

Targeting zero waste

Waste is an inevitable part of any manufacturing process, but there are ways to ensure it doesn't become an environmental headache. In 2016 we set ourselves a challenge to reduce and if possible, totally eliminate our waste.

We are incredibly proud to say that in 2019 we became the first UK washroom manufacturer to achieve our target of 0% board waste to landfill.

A £1M investment into a new, state-of-the-art 1.75MW biomass burner has enabled us to eliminate MDF and HPL board waste; our smaller burner incinerates non-biomass waste like Solid Grade Laminate.

The cost of energy and the issue of carbon emissions are high on our environmental agenda and we are continually searching for ways to reduce energy consumption. Our biomass facility generates enough renewable energy to independently heat our entire manufacturing facility and office buildings.

We know our responsibility and Venesta is totally committed to making a positive impact on the environment. We treat the environment the way we treat our customers, with care and commitment.

FSC® certification

Take care of the forest

As our customer, you can be confident that our materials and products have been checked at every stage of processing to ensure we are sourcing from sustainable and ethical sources.

We only purchase wood-based panel products from suppliers who are independently certified from either FSC (Forest Stewardship Council) or PEFC (Programme for the Endorsement of Forest Certification).

Our V3 Veneer range is FSC MIX certified with a full chain of custody available for our customers.

Laminate product materials are supplied to us as an FSC accredited product under 'FSC Controlled Wood'. Certificates are available to our customers upon request to demonstrate this.



Learn about our biomass burner which has helped us achieve 0% board waste to landfill by visiting our YouTube channel.

Reducing our travel

Decreasing carbon emissions

As part of our ongoing commitment to improve our carbon footprint, we've tasked ourselves with reducing employees' travelling time. All staff are encouraged to use public transport wherever possible and we've installed video conferencing facilities on all of our sites to allow meetings to be held without the need for travel.



01-02 Waste management

Biomass burner turns production waste into factory and office heating.

03 Recycling

Wherever possible, all off-cuts are worked back into production for smaller product components.

04 Boilers

Our biomass burner has helped us achieve our 0% waste to landfill target.

05 Efficiency

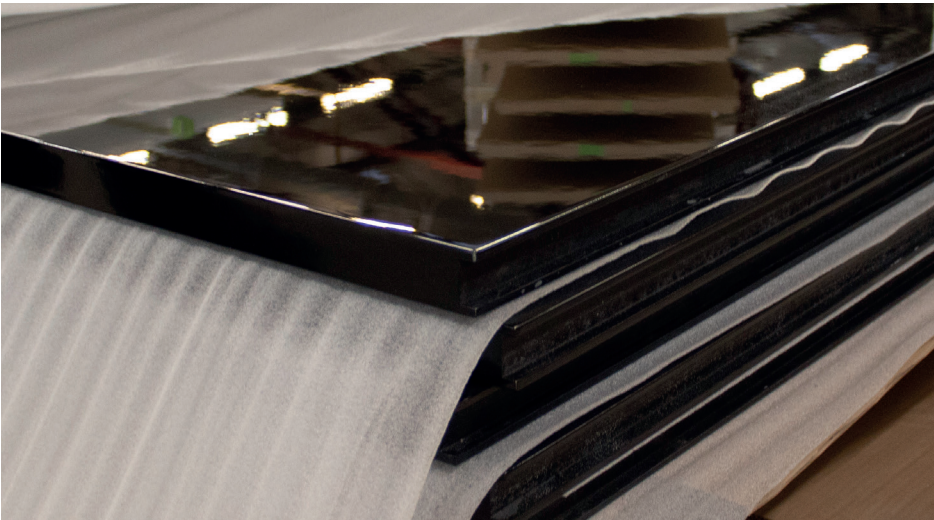
Robotic handling systems ensure maximum board utilisation is achieved.



We know washrooms. Your partner, every step of the way.

Venesta is passionate about ensuring you get the very best product and service, whatever the size of the project. That's why, from your first enquiry through to installation and beyond, you'll have a team of talented and committed experts working tirelessly to ensure you're happy and satisfied.

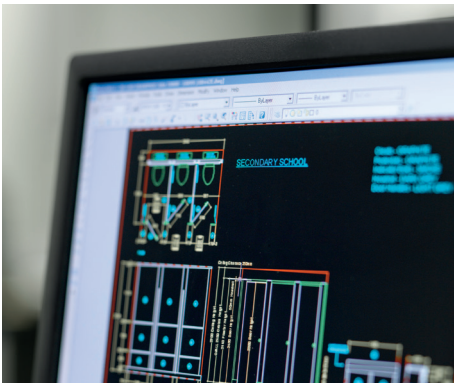
At Venesta, we believe it's our people that make the real difference to our business success. Everyone is an expert in their field, from our highly creative CAD team to our efficient and responsive Project Managers and our dedicated manufacturing team. Their experience and professionalism is what underpins the quality of our customer relationships.



How can we help you?

Our friendly and knowledgeable team is waiting to advise you on your project. Call us on **01474 353333**.

Alternatively, you can see all our products online at **www.venesta.co.uk**. We look forward to working with you.



www.venesta.co.uk

**For help and advice on choosing
your washroom, visit our website
for a comprehensive guide.**

Our address

1st Floor,
Units 19-23,
St George's Square,
St George's Centre,
Gravesend,
Kent, DA11 0TA
United Kingdom

Telephone
01474 353333

Email
marketing@venesta.co.uk

Republic of Ireland
Telephone
1 800 931 880

Middle East
Telephone
+971 6 5533361

www.venesta.co.uk

www.venesta-spares.co.uk