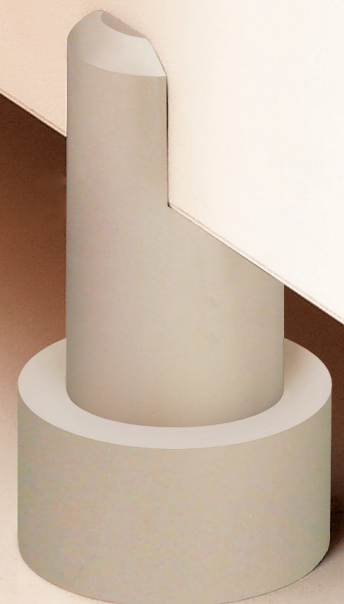


Product portfolio

We know washrooms.
For all your design and
budget requirements.



Venesta

A photograph of a modern washroom interior. On the left, there is a long row of bright orange washroom cubicles. Each cubicle has a small, circular silver handle. The floor is made of large, light-colored square tiles. On the right, a white wall features a rectangular mirror. The lighting is bright and even.

We know washrooms. After 120 years of innovation in partnership with our customers, we're still passionate about setting new standards of design, value, performance and reliability.

At Venesta, we live and breathe washrooms. Ever since the early days, innovation has been our inspiration, and product excellence our goal. With a commitment to setting the benchmark for design and performance, we've partnered with our clients in creating solutions that they can rely on to satisfy the most challenging and demanding of briefs.

Today, our expert knowledge and pioneering attitude have inspired our new range of commercial toilet cubicle and washroom systems. On the following pages you'll discover great product choice, value for money and uncompromising quality. As customer care is so important to us, you'll find we're breaking new ground in customer service too.

We invite you to see for yourself.

We know our customers.

From tailor-made design excellence to dedicated support and responsive service, everything we do is focused on you and what you need to get the job done.

Your guarantee of quality

At Venesta, quality underscores everything we do. Our design team is dedicated to providing solutions that inspire, delight and perform superbly, even in the most demanding of environments.

All of our fittings are designed to suit our clients' specific requirements. Each component is considered in detail, in terms of both visual appearance and functionality. The same integrity applies in the way we select materials.

Our research and development team is continually raising the design benchmark and no product is launched without extensive testing. In fact, we've been at the forefront of industry invention for many years and have pioneered countless innovations.

Durable and fit for purpose to suit your demands

Everyone expects a product that's fit for purpose but for Venesta, all of our products come with a rock solid 10 year guarantee. We make it our business to really understand your needs before providing the appropriate solution. That way we can be sure you're getting the right product for the job. Fit for purpose also means high standards of durability.

Simple to install to make your life easier

Because we want to make your life as easy as possible, installation is at the forefront of our mind when we're creating new products. With simplicity built into every solution and thorough fixing instructions provided, we can ensure your washroom will be built and ready for use in the shortest of time frames. But don't forget, if you do experience any difficulties, our customer service team is here to resolve any issues quickly and efficiently.

A team of experts focused on fulfilling your needs

At Venesta, we've built a team of people who are genuinely passionate about what they do. Many of us have been with the company for years and have built up a wealth of experience and product knowledge. We have CAD technicians to help with your drawings, project management professionals to ensure everything is on budget and on time, manufacturing experts who have a fine eye for detail and a friendly team that's committed to your total satisfaction.

Equality Act 2010 compliant for your reassurance

At Venesta, we're an authority on Equality Act 2010 compliance. From access, to colours and finishes, we offer products that are fully compliant. What's more, because we understand the Equality Act 2010 inside out, we can provide an unrivalled level of support and advice, should you need it.

The UK's first panel manufacturer to achieve 0% board waste to landfill

In 2019 we were extremely proud to announce that we achieved our target of 0% board waste going to landfill, with the help of our £1M state-of-the-art, 1.75MW, on-site biomass burner.

The heat generated from our burner provides heating to our entire manufacturing facility and office buildings, self-sufficiently, from waste offcuts.

As a manufacturer we're making the most of every portion of the materials that we use and are continually searching for ways to reduce energy consumption across all of our facilities. We know our responsibility and Venesta is totally committed to making a positive impact on the environment.



01 A friendly team of experts

We're genuinely passionate about what we do and enjoy sharing our wealth of experience and product knowledge with you.

02 A fine eye for detail

Our team is committed to your total job satisfaction, and that means getting every detail right, every time.

03 Our responsibility to the environment

The heat generated from our biomass burner provides heating to our entire manufacturing facility and office buildings from waste offcuts.

04 Quality materials

No product is launched without extensive testing and all materials are selected for quality and durability.

We know good service.

The quality of our products is only half the story. We know that excellent service can make all the difference to your satisfaction.

Our 7-stage service plan

Whether it's a simple vanity unit or an extensive refit, you'll always find we go the extra mile to ensure you're happy. Here's our 7-stage service plan.

Stage 1 Specification

Our dedicated team of Specification Managers will help you choose the most cost effective and suitable products for your project without compromising on aesthetics and quality. To help you, our NBS specification writing service is available free of charge to guide you through all the detail. With our remote specification service, the process is quick and easy. Simply send over your drawings and your local Specification Manager will provide you with a comprehensive specification tailored to your project. Remember, whenever you need advice of any kind, just call our helpful sales team, who can also provide you with product literature and samples.

Stage 2 Estimating

Our estimating service levels have never been stronger; it's our aim to never deliver a late quotation. We pride ourselves on our attention to detail, so our comprehensive quotations always give the most detailed breakdowns of materials and prices. Don't forget, our dedicated technical helpline is here to give you technical support on all our products at any stage of the estimating and ordering process.

Stage 3 CAD

Once your order is placed, our highly skilled CAD Technicians will prepare layout drawings. At this stage, you'll be given a dedicated CAD Technician to work with you throughout your project. Everything from dimensions, colours and drawings can be sent for your approval prior to manufacture.

Stage 4 Manufacture and delivery

We're committed to delivering your order as soon as we possibly can, wherever you are in the World. With that in mind, we've invested £5m in state of the art machinery - allowing us to streamline our manufacturing process to make it more efficient than ever before. 100% on time, in full with no errors is our aim and we monitor our performance closely to ensure we can deliver on this.

Stage 5 Installation

Our highly responsive technical helpline is here to give you technical support throughout the installation process. It's worth remembering that although we're a supply only company, if you need fitting too, there are Accredited Installers we can recommend who have vast experience installing our products. Accredited Installers undergo a rigorous training and approval process so you can be assured of a top quality job.

Stage 6

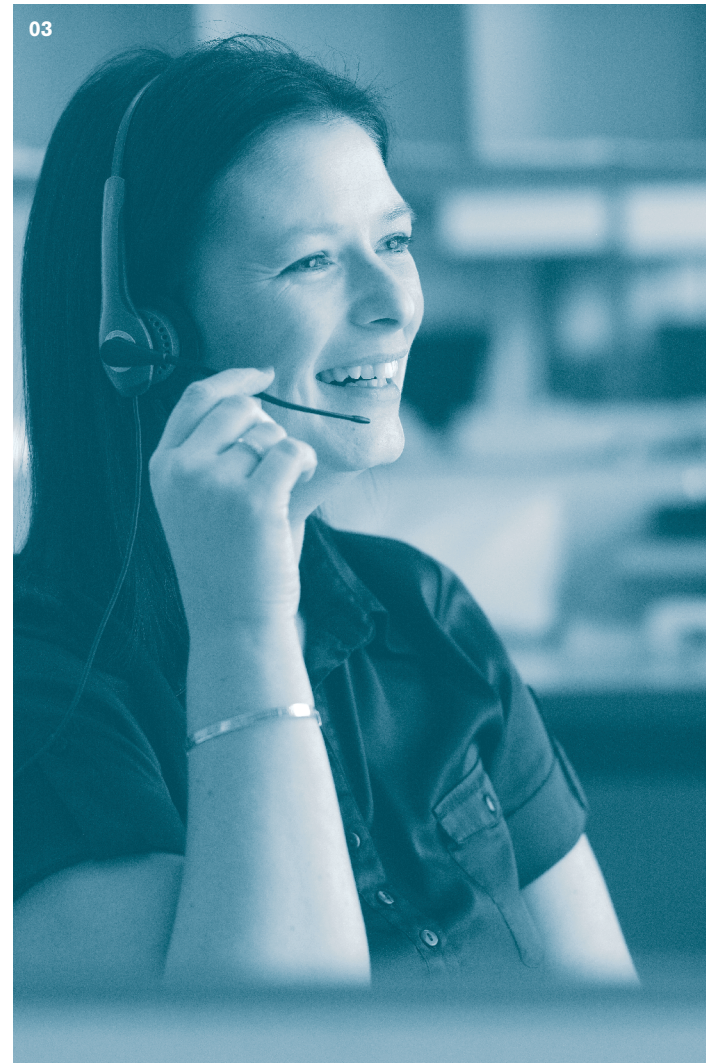
After sales support and spares

Once your products have been delivered, we'll give you your own dedicated point of contact to efficiently deal with all your after sales needs. Attentive and highly empathetic to your needs, they'll ensure you're completely happy at all times with our service.

Stage 7 Spares website

Our spares website has been created to make it as easy as possible for you to purchase spare items for your Venesta products. Whether it's a toilet cubicle lock, a pedestal leg, headrail end caps, washroom cubicle hinges or door buffers, it's easy to find what you are looking for on our Venesta spare parts website www.venesta-spares.co.uk.

One final thing, at Venesta, we appreciate customer feedback; it helps us to ensure we can continue to improve what we do in line with your needs. So, if you have any comments on our products or service, we want to hear them. You can call us on 01474 353333.



01 Sample service

Our helpful sales team can provide you with product literature and samples.

02 Technical drawings

Everything from dimensions, colours and drawings can be sent for your approval prior to manufacture.

03 Dedicated technical helpline

When you're ready to specify, our dedicated technical helpline offers you all the technical support you need.

04 Design team

A specification manager will talk through your washroom requirements to help you choose the most suitable products for your project.

Vepps Sanitaryware



Jasper Morrison back to wall WC*
E622101



Contour 21+ back to wall WC
S0439HY 410mm height
S0440HY raised height



Sandringham 21 back to wall WC
E897401



Contour 21+ 46cm height back to wall WC
S0437HY 700mm projection
S0438HY 750mm projection



Contour 21 schools back to wall WC
S304601 305mm height
S304701 355mm height



Jasper Morrison urinal
E621501 580mm height



Concept back to wall WC with Aquablades
E050901



Sandringham wall hung WC*
V391001
Requires Vepps WC Carrier



Jasper Morrison wall hung WC*
E621701
Requires Vepps WC Carrier



Contour HygenIQ urinal
S611901 675mm height



Contour urinal
S611001 665mm height



Sanura 50cm urinal bowl
S6100(01) 500mm height



Contour 21+ wall hung WC
S0443HY
Requires Vepps WC Carrier



Concept wall hung WC with Aquablades
E047301
Requires Vepps WC Carrier



Urinal division Vitreous China with hanger and screw
S6120(01)

*Could incur extended lead times, please contact our friendly sales team for further information

Vepps Sanitaryware



Jasper Morrison 500mm vessel basin*
E621001 no tap hole



Concept 430mm vessel basin
E803901 1 tap hole*



Stainless steel fully inset basin*
9S30047PO no tap hole



Concept 450mm semi-recessed basin
E797901 1 tap hole



Profile 21 500mm semi-recessed basin
S249201 1 tap hole
S249401 2 tap holes



Sandringham 21 500mm semi-recessed basin
E895801 1 tap hole
E895901 2 tap holes



White Integrated Solid Surface basin*
0V10000 no tap hole



Cherwell 21 undermount basin
S268701 38cm no tap hole



Sandringham 21 500mm fully inset basin*
E895201 1 tap hole
E895401 2 tap hole



Portman 21 500mm panel mounted basin
S230801 left tap hole*
S225401 right tap hole
S231101 Centre tap hole



Portman 21 400mm panel mounted basin
S215901 left tap hole
S231401 right tap hole



Contour 21 370mm panel mounted basin
S212201 centre tap hole
S2473(01) left tap hole
S2474(01) right tap hole



Orbit 21 550mm fully inset basin
S248601 1 tap hole
S248801 2 tap holes



Jasper Morrison 550mm semi-recessed basin*
E620601 1 tap hole



Contour 21 500mm panel mounted basin
S215401 no tap hole



Contour 21+ 50cm back outlet basin (HBN 00-10 HTM64)
S0430HY

*Could incur extended lead times, please contact our friendly sales team for further information

Vepps Brassware



Sensorflow 21 compact deck mounted electronic spout
A4852AA mains
A4853AA link



Sensorflow 21 basin mounted electronic spout
A4171AA mains
A4172AA link



Contour lever thermo
A4131AA flexi tails
A4169AA copper tails



Avon basin mixer
B8263AA flexitails
B8861(AA) 1 tap hole copper tails



Silver single lever vessel basin mixer*
E0069AA



Piccolo 21 washbasin mixer 1 hole single lever*
B8260AA



Avon bib wall mounted tap*
S7241AA



Sensorflow 21 compact wall spout 23cm
A4849AA Mains
A4850AA Link



Avon 21 pillar taps
B8267AA pair



Piccolo 21 pillar taps
B8262AA pair



Sandringham pillar taps
S0672AA pair



Sandringham 21 lever pillar taps*
B9881AA pair



Markwik lever bib taps*
S8270AA



Markwik 21+ wall mounted thermo mixer with time flow sensor
A6737AA Fixed spout
A6684AA Detachable spout
S8239NU sterilising kit for hospital mixer



Markwik 21+ wall mounted thermo mixer
A6060AA / S8239NU sterilising kit for hospital mixer
A6682AA Detachable spout
A6735AA Fixed spout

*Could incur extended lead times, please contact our friendly sales team for further information



Sensorflow WC flush
S358967 6 litre flush
S359967 4 or 4.5 litre flush



Sensorflow urinal flush
A7002AA high pressure link
A7001AA high pressure mains
A7059AA low pressure link
A7058AA low pressure mains



Armitage Shanks unbranded dual flush plate
S4399AA chrome plated
S4504MY stainless steel



Pneumatic panel mounted palm push button
S4513MY stainless steel



Pneumatic panel mounted finger push button
S4512MY stainless steel



Chrome plated lever
C03SN20CP



Shower in a box
S6933MY



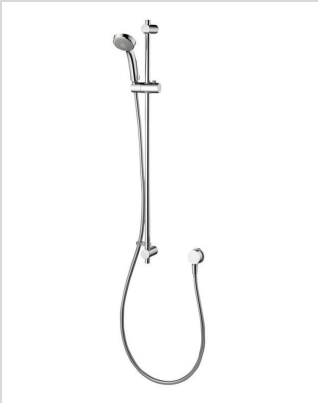
Sensorflow 21 shower control*
A4185AA mains
A4186AA link



Contour 21 push button shower valve
B8266AA chrome plated



Anti vandal fixed shower head
A5452AA



Armaglide 2 shower kit with single function handspray 900mm rail and 1800mm smooth hose
B9306



Contour 21 Built-in Sequential Shower mixer
A4129AA



01 Doc M Shower Room Pack
S6960 White, Blue, Grey, Charcoal, Stainless Steel



02 Doc M Contour 21+ back to wall pack with lever operated cistern and grab rails
S0685 White, Blue, Grey, Charcoal, Stainless Steel*, Red*

*Could incur extended lead times, please contact our friendly sales team for further information



Langley back to wall WC
LLWC102



Langley Curve back to wall WC
LLWC122



Marden back to wall WC
MDWC102



Chartham Beyond back to wall rimless WC
CHWC121



Shenley back to wall children's pan
SHWC101



Chartham Healthcare wall hung WC
CHWC117 700mm projection
Requires Vepps WC Carrier



Chartham back to wall WC
CHWC102



Chartham rimless back to wall WC
CHWC103 Comfort height
CHWC104 480mm high



Langley wall hung WC
LLWC101
Requires Vepps WC Carrier



Langley Curve wall hung WC
LLWC121
Requires Vepps WC Carrier



Langley concealed trap urinal
LLUR101



Marden concealed trap urinal
MDUR101



Chartham exposed trap urinal
CHUR104



Marden waterless urinal
MDUR103



Marden wall hung WC
MDWC101
Requires Vepps WC Carrier



Chartham wall hung WC
CHWC101
Requires Vepps WC Carrier



Chartham Beyond wall hung rimless WC
CHWC122



Chartham 480mm height back to wall WC
CHWC105 700mm projection
CHWC106 750mm projection



Langley Waterless Urinal
LLUR104



Urinal separator
CHUR107

Vepps Sanitaryware



Chartham countertop basin CTH
CHWB112



Langley round under counter basin 400
LLWB107 no tap hole



Marden 560mm under counter basin
MDWB107



Langley wall hung basin 400
LLWB101 centre tap hole



Langley wall hung basin
LLWB109 centre tap hole 500
LLWB110 centre tap hole 600



Marden wall hung basin 525
MDWB103 centre tap hole



Shenley countertop basin
SHWB103 centre tap hole
SHWB104 2 tap hole



Langley semi-recessed basin 500
LLWB104 centre tap hole



Marden semi-recessed CTH basin 520
MDWB105 centre tap hole



Marden wall hung basin 420
MDWB101 centre tap hole



Chartham wall hung basin 450
CHWB104 centre tap hole
CHWB103 2 tap hole



Chartham wall hung back outlet clinical basin 500
CHWB107 no tap hole



Chartham semi-recessed basin 450
CHWB109 right tap hole
CHWB108 2 tap hole



Shenley slim semi-recessed basin 400
SHWB105 right tap hole
SHWB106 2 tap hole



Marden square semi-recessed basin
MDWB113



Chartham wall hung basin 380
CHWB101 left tap hole
CHWB102 right tap hole



Chartham wall hung basin 500
CHWB105 right tap hole



Marden cloakroom wall hung basin
MDWB114 1 tap hole

Vepps Sanitaryware

Vepps Brassware



Langley vessel basin
LLWB108 no tap hole



Marden vessel basin
MDWB111 - Central tap hole
MDWB112 - No tap holes



Langley round vessel basin
LLWB122



Langley oval vessel basin
LLWB123



Langley rectangular vessel basin
LLWB121



Chartham Beyond vessel basin
CHWB120



Chartham cleaners sink
CHSK101



SanCeram Thermostatic sequential TMV3 mixer tap-flexi tails
SCBW120
SCBW115 Copper tail pack



SanCeram Basin mounted self closing mixer with temperature adjustment
SCBW106



Vision self closing mixer
VSN123



Insignia mixer
INS113



Adore basin mixer
ADORE113/EK



Adore mini basin mixer
ADORE313



Swoop luxury lever mono basin mixer PTW
SWO113



Swoop luxury tall mono basin mixer for vessel basin
SWO113 EX



Hartley deck mounted mono basin mixer tap
HABW101 - Chrome



Hartley deck mounted mono basin mixer tap
HABW101N - Brushed nickel



Hartley deck mounted mono basin mixer tap
HABW101B - Matt black



Hartley mono basin mixer
HABW102 - Chrome

Vepps Brassware



Hartley mono vessel basin mixer
HABW102N - Brushed nickel



Hartley mono vessel basin mixer
HABW102B - Matt black



Hartley mono basin mixer tap
HABW103 - Chrome



Hartley mono basin mixer tap
HABW103N - Brushed nickel



Deva deck mounted temperature adjustment sensor tap
SENSOR6BT



Deva sensor tall vessel basin tap
SENSOR3D



Wall mounted sensor tap
SENSOR9W



DVS Aquarius wall mounted 150mm tap spout
AT02001



Hartley mono basin mixer tap
HABW103B - Matt black



Insignia lever pillar
INS101



DLT short lever pillar
DLT101



Self closing pillar
NCT001



Deva lever action bib taps
DLT095



Deva 6" lever handles
DLV002



HBN lever operated tap
SCBW111 fixed spout
SCBW122 removable spout
SCBW117 HBN tap purge kit



HBN thermostatic sensor tap
SCBW112 fixed spout
SCBW123 removable spout
SCBW117 HBN tap purge kit
SCBW116 Transformer to mains power



Contemporary press action taps
SCBW124



Aquarius A45*
AT03011



SanCeram deck mounted sensor tap
SCBW119



Deva deck mounted sensor tap
SENSOR1D

*Could incur extended lead times, please contact our friendly sales team for further information

Vepps Fittings



Thomas Dudley sensor flush
CIST108 Single (Battery)
CIST109 Dual (Battery)
CIST110 Mains transformer option



Electroflo urinal sensor
URIN108 Battery
URIN109 Mains



Miniflo dual flush plate
CIST104 Dual push button flush
CIST103 Single push button flush



Concealed dual flush cistern with oyster push button
CIST107



Miniflo palm push flush
CIST105



Miniflo metal single flush
CIST106



Thomas Dudley standard lever, dual flush
CIST101



Thomas Dudley dimple lever, dual flush
CIST102



Sequential lever operated concealed shower valve
SHWR112



Deva Vision thermostatic valve
VSNVSEQ02



Inta push button shower valve
SHWR122



Anti-vandal shower head
SHWR124



Anti-vandal fixed shower head
SHWR118



SanCeram grab rail based shower kit, White
SHWR115



SanCeram Doc M shower pack concealed
SCDMSHCWH White
SCDMSHCBL Blue



Doc M pack, back to wall
SCDMBTWLB Left hand blue
SCDMBTWRB Right hand blue
SCDMBTWLW Left hand white
SCDMBTWRW Right hand white

SCDMBTWLG Left hand grey
SCDMBTWRG Right hand grey
SCDMBTWLSS Left hand stainless steel
SCDMBTWRSS Right hand stainless steel

We know our responsibility.

Your world is our world. At Venesta, we treat the environment the way we treat our customers, with care and commitment.

Managing our waste

Targeting zero waste

Waste is an inevitable part of any manufacturing process, but there are ways to ensure it doesn't become an environmental headache. In 2016 we set ourselves a challenge to reduce and if possible, totally eliminate our waste.

We are incredibly proud to say that in 2019 we became the first UK washroom manufacturer to achieve our target of 0% board waste to landfill.

A £1M investment into a new, state-of-the-art 1.75MW biomass burner has enabled us to eliminate MDF and HPL board waste; our smaller burner incinerates non-biomass waste like Solid Grade Laminate.

The cost of energy and the issue of carbon emissions are high on our environmental agenda and we are continually searching for ways to reduce energy consumption. Our biomass facility generates enough renewable energy to independently heat our entire manufacturing facility and office buildings.

We know our responsibility and Venesta is totally committed to making a positive impact on the environment. We treat the environment the way we treat our customers, with care and commitment.

FSC® certification

Take care of the forest

As our customer, you can be confident that our materials and products have been checked at every stage of processing to ensure we are sourcing from sustainable and ethical sources.

We only purchase wood-based panel products from suppliers who are independently certified from either FSC (Forest Stewardship Council) or PEFC (Programme for the Endorsement of Forest Certification).

Our V3 Veneer range is FSC MIX certified with a full chain of custody available for our customers.

Laminate product materials are supplied to us as an FSC accredited product under 'FSC Controlled Wood'. Certificates are available to our customers upon request to demonstrate this.



Learn about our biomass burner which has helped us achieve 0% board waste to landfill by visiting our YouTube channel.

Reducing our travel

Decreasing carbon emissions

As part of our ongoing commitment to improve our carbon footprint, we've tasked ourselves with reducing employees' travelling time. All staff are encouraged to use public transport wherever possible and we've installed video conferencing facilities on all of our sites to allow meetings to be held without the need for travel.



01-02 Waste management

Biomass burner turns production waste into factory and office heating.

03 Recycling

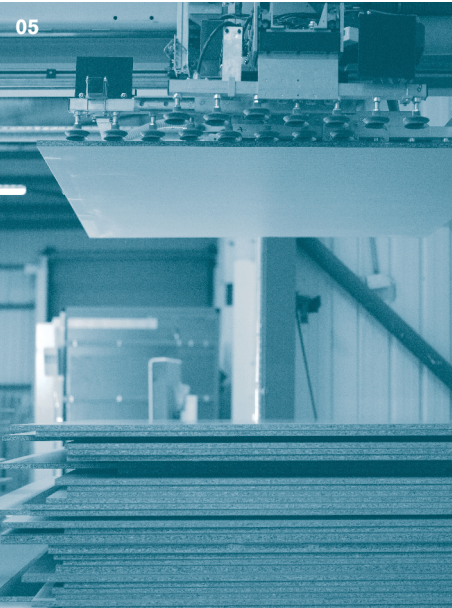
Wherever possible, all off-cuts are worked back into production for smaller product components.

04 Boilers

Our biomass burner has helped us achieve our 0% waste to landfill target.

05 Efficiency

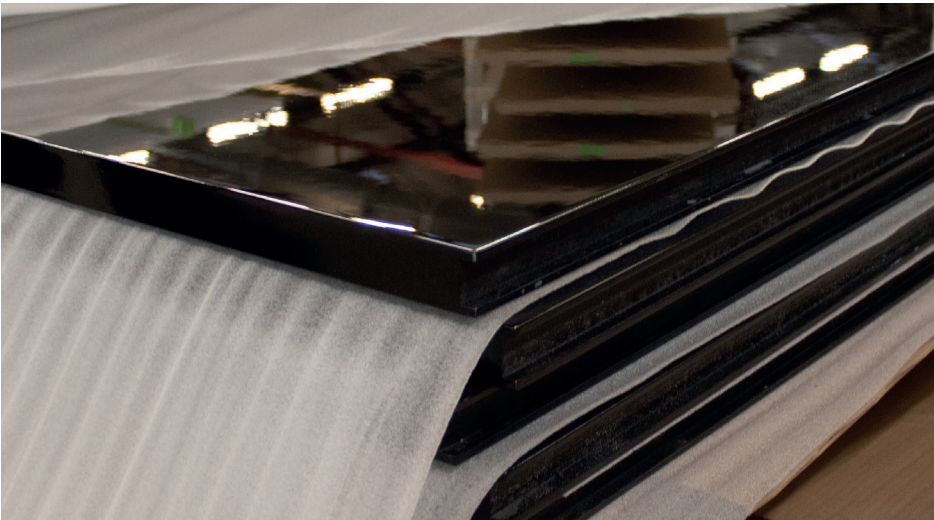
Robotic handling systems ensure maximum board utilisation is achieved.



We know washrooms. Your partner, every step of the way.

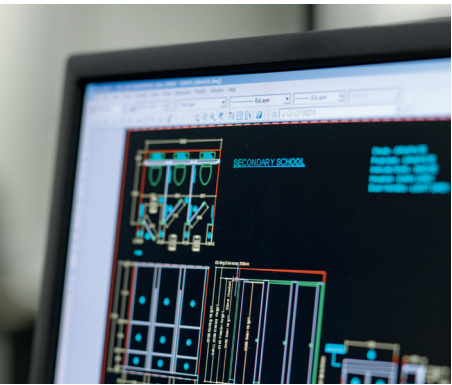
Venesta is passionate about ensuring you get the very best product and service, whatever the size of the project. That's why, from your first enquiry through to installation and beyond, you'll have a team of talented and committed experts working tirelessly to ensure you're happy and satisfied.

At Venesta, we believe it's our people that make the real difference to our business success. Everyone is an expert in their field, from our highly creative CAD team to our efficient and responsive Project Managers and our dedicated manufacturing team. Their experience and professionalism is what underpins the quality of our customer relationships.



How can we help you?
Our friendly and knowledgeable team is waiting to advise you on your project. Call us on **01474 353333**.

Alternatively, you can see all our products online at **www.venesta.co.uk**. We look forward to working with you.



www.venesta.co.uk

**For help and advice on choosing
your washroom, visit our website
for a comprehensive guide.**

Our address

1st Floor,
Units 19-23,
St George's Square,
St George's Centre,
Gravesend,
Kent, DA11 0TA
United Kingdom

Telephone
01474 353333

Email
marketing@venesta.co.uk

Republic of Ireland
Telephone
1 800 931 880

Middle East
Telephone
+971 6 5533361

www.venesta.co.uk

www.venesta-spares.co.uk