

# The Halfen Connection

Construction solutions for fixing,  
support and restraint, reinforcement and lifting



**HALFEN**  
YOUR BEST CONNECTIONS





our global expertise and experience means that we are industry leaders

- Part of the Halfen Group that operates worldwide through 15 companies and divisions, Halfen in the UK benefits from a pool of international experience and expertise allied to considerable research and development resources.
- This has helped us to gain and maintain a position at the very top of the specialist supplier's ladder.

Halfen has been providing fixing, support and restraint, reinforcement and lifting solutions to the UK construction industry for more than 30 years.



we listen, we understand, we learn and we improve

- Halfen people understand and are aware of industry requirements and legislation.
- We provide specifiers, engineers and contractors with both off-the-shelf and custom-designed solutions to particular problems.
- Our commitment is to new and better ways of building and to achieve that we will continue to make substantial investments for the future.

Main photograph: Kwikastrip reinforcement continuity used at Canary Wharf.



ETA - 09/0339  
432 - CPD - 8394 - 01





#### our technical and design service is an integral part of the Halfen solution

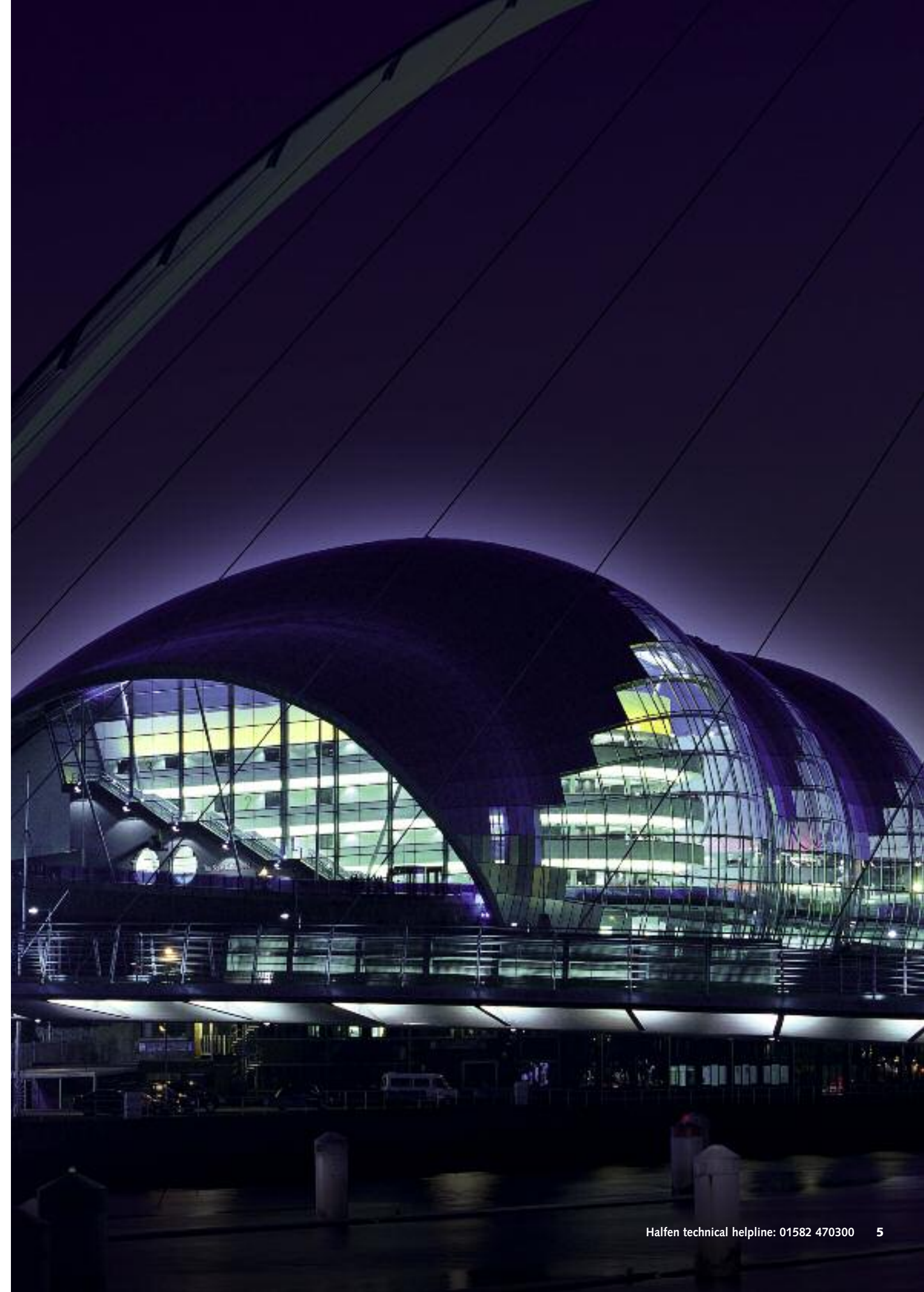
- Halfen's technical advisory service is aimed at assisting designers and end users with practical advice.
- We evaluate the cost effective option, re-design and re-cost where necessary.
- We advise on selection and use of Halfen products and systems including compliance with the relevant regulations.
- We are members of several organisations including the British Precast Concrete Federation and the Stone Federation Great Britain. Many of our reinforcement products are CARES approved.

Halfen products are backed by an expert, experienced, technical design and customer support service.

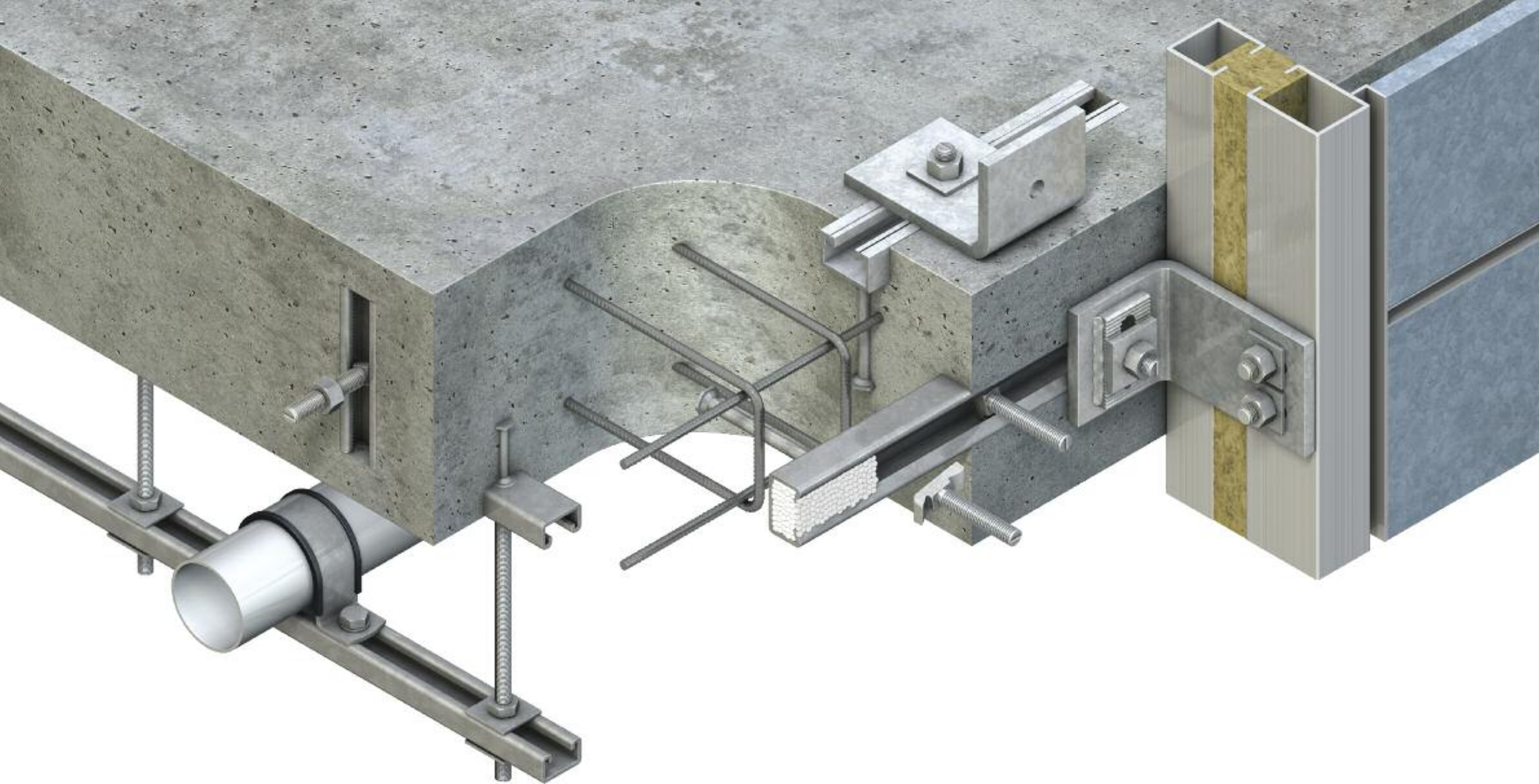


- To ensure that products are used to maximum effect, Halfen makes information readily available through literature and CAD details, CPD seminars, NBS Plus, and on our website.
- Software programmes for the calculation of safe loadings for various products are available on request and down-loadable from the website: [www.halfen.co.uk](http://www.halfen.co.uk)

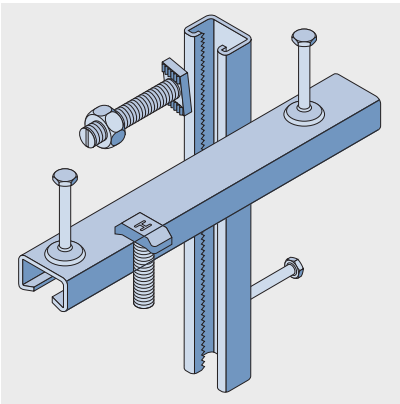
Main photograph: Sage Music Centre with DETAN tension rods and Millennium Bridge with BRA parapet anchor brackets, Gateshead.



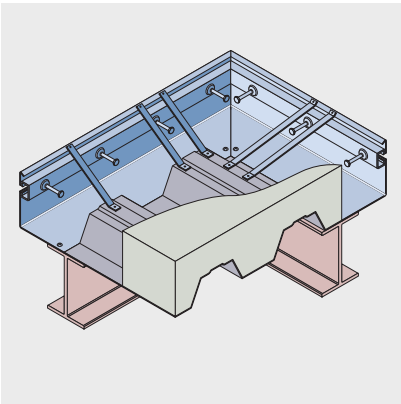




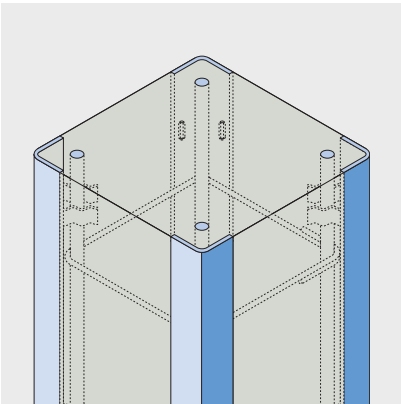
# Cast-in channels and accessories



**Cast-in channels**  
A solution to Hand Arm Vibration, are available in a wide range of sizes and profiles, with load ranges up to 32kN pull out or shear. Plain or toothed channels with a full range of matching T-bolts and locking plates.



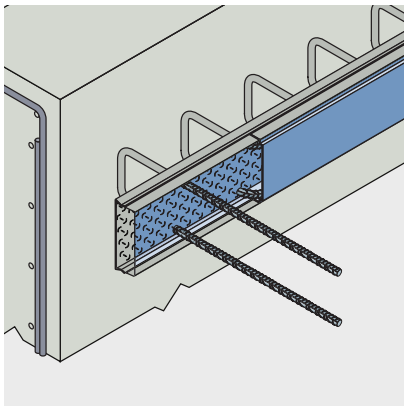
**Pourstop and skis**  
Custom fabricated solutions for safe and secure fixing into or close to edges of thin metal deck flooring. Ideal for brickwork support systems, curtain wall fixings and lift installations.



**Corner guards**  
The ideal protection for corners and edges of concrete walls and columns in car parks, factories and other 'trafficked' buildings.

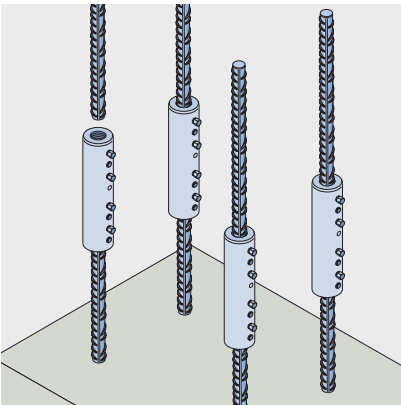
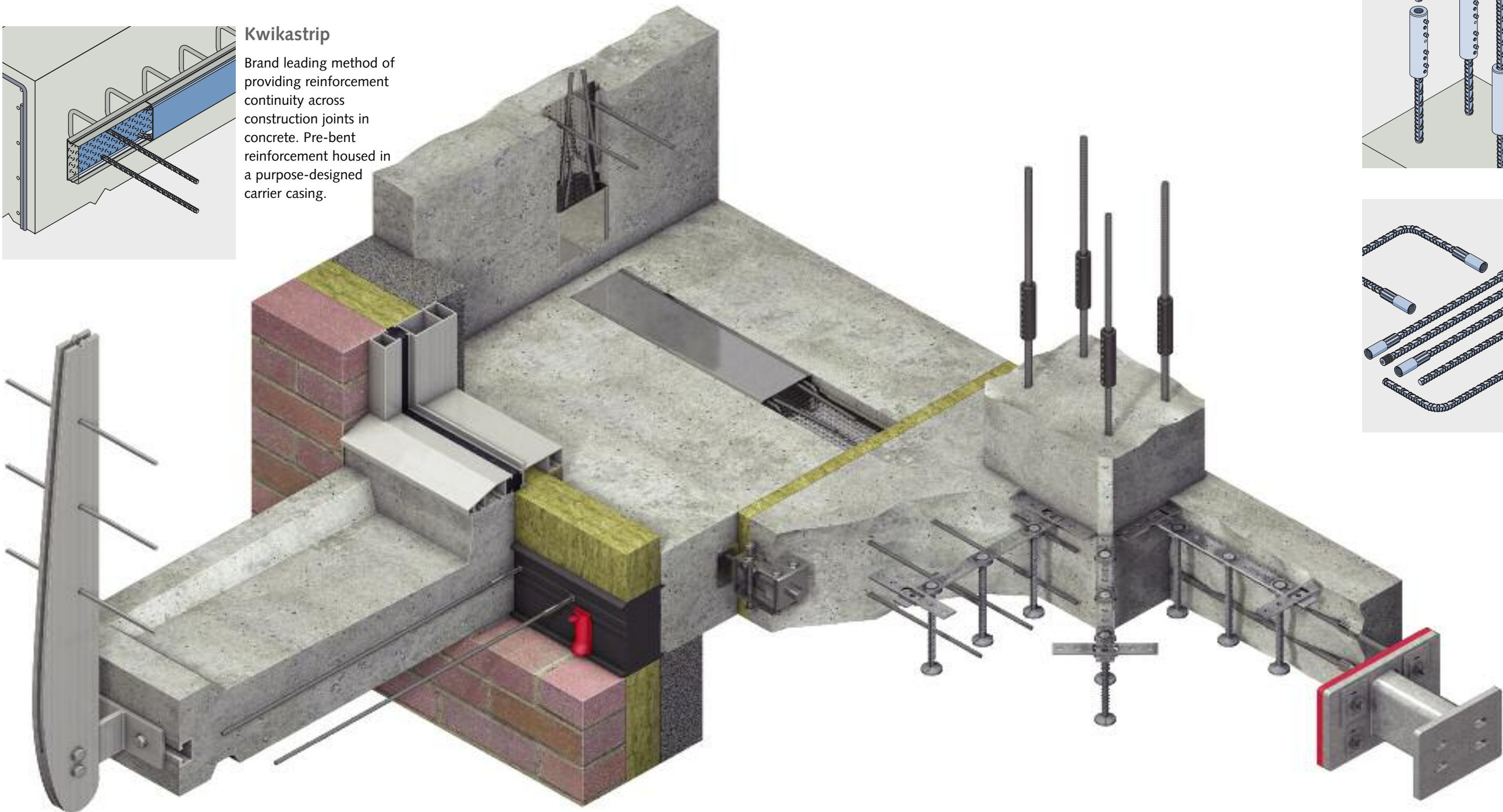


# Concrete reinforcement products



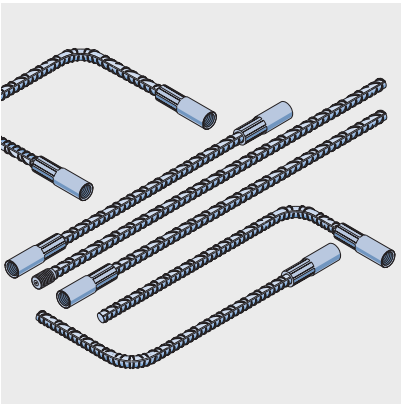
## Kwikastrip

Brand leading method of providing reinforcement continuity across construction joints in concrete. Pre-bent reinforcement housed in a purpose-designed carrier casing.



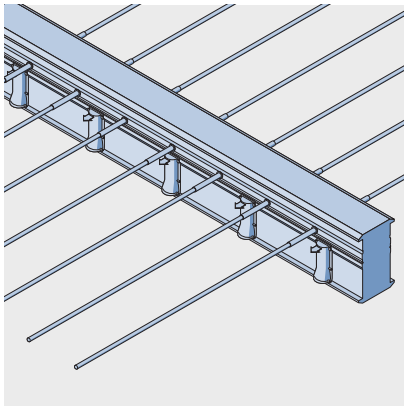
## MBT grip connector

Slimline remedial coupler which eliminates the need for splicing and welding to achieve reinforcement continuity.



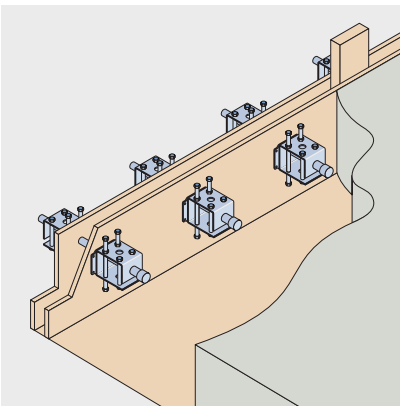
## Rebar couplers

HBM concrete reinforcement continuity achieved by means of socket bars and connector bars. The system features high-strength couplers factory-swaged onto European standard 500 reinforcement bars.



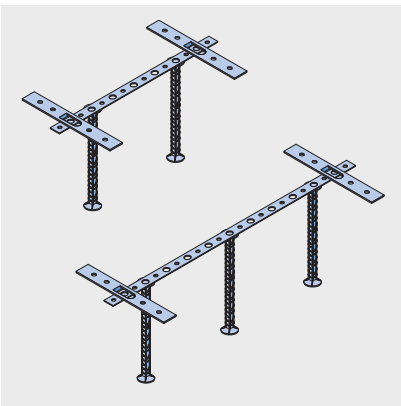
## HIT balcony connection system

Market leading reinforcement continuity and thermal break system for cantilevered balcony construction that minimises the effects of cold-bridging.



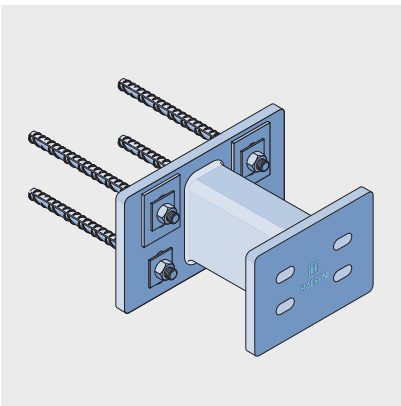
## CRET shear load connector

High-load shear dowel system for movement joints which elevates the need for additional column supports.



## Punching shear reinforcement

Designed to prevent punching shear failure at column heads in concrete flat slab construction. Supplied in easy to install standard modules.

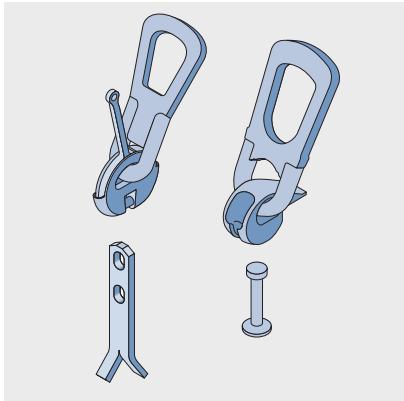


## Balcony connectors

The SBC bracket allows both horizontal and vertical adjustment. The rectangular body of the bracket passes easily through the facade and allows the bracket penetration to be neatly and aesthetically sealed and trimmed.

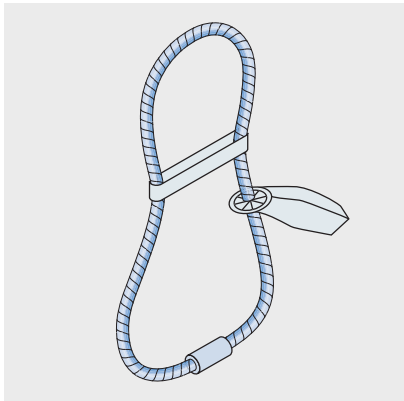


# Precast lifting and support systems



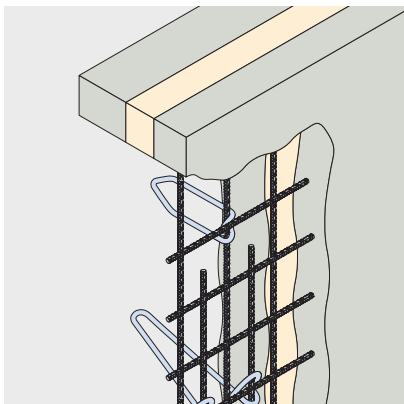
**Rapid safety lift systems**

The two most trusted brands in the industry – Frimeda and Deha – provide economical and safe methods of lifting, turning and installing precast concrete elements. Rapid safety lift systems are quick-release, easy-to-use and versatile systems with loads ranges to 45T.



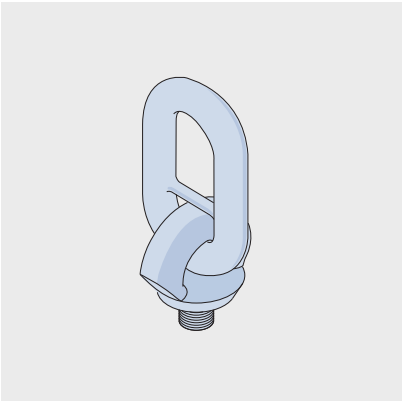
**Halfen cast-in hoop lifting system**

Cast-in hoops require no additional lifting head, only the crane hook. Suited to large grey concrete elements such as bridge beams, they have a load capacity to up to 90T per hoop.



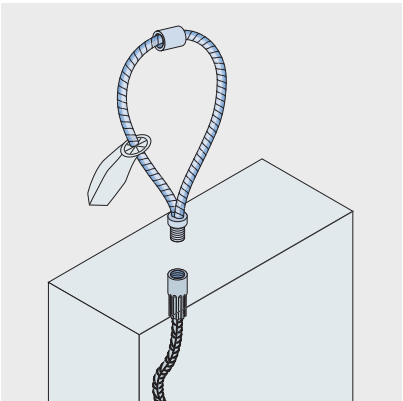
**Precast sandwich panel system**

For fully insulated precast panels, stainless steel ties carry the load of the outer skin through the insulation and back to the inner load-bearing skin.



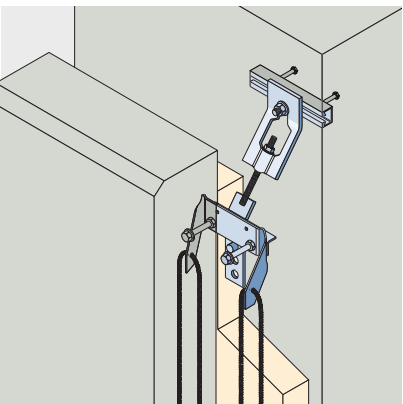
**HD socket lifting system**

The new high capacity HD socket lifting system with a socket protector with 8 load levels up to 15T. Particularly suited for high loads in thin panels.



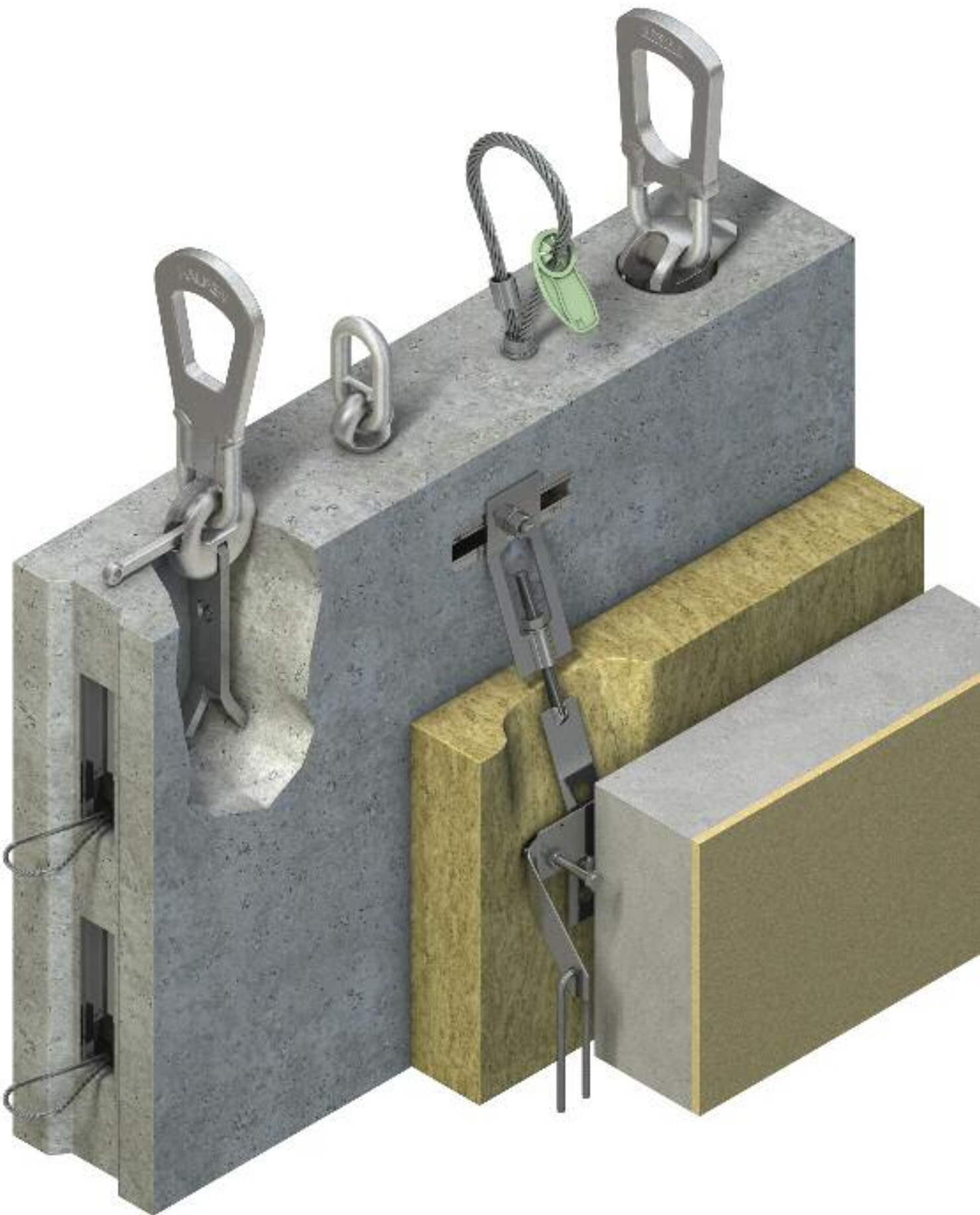
**Halfen threaded lifting system**

Traditional threaded inserts with or without reinforcement tails available in zinc-plated mild steel or stainless steel and have a load capacity up to 12.5T.



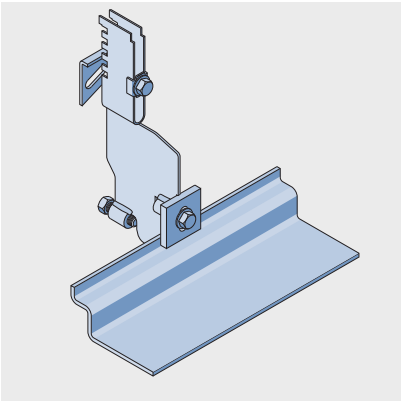
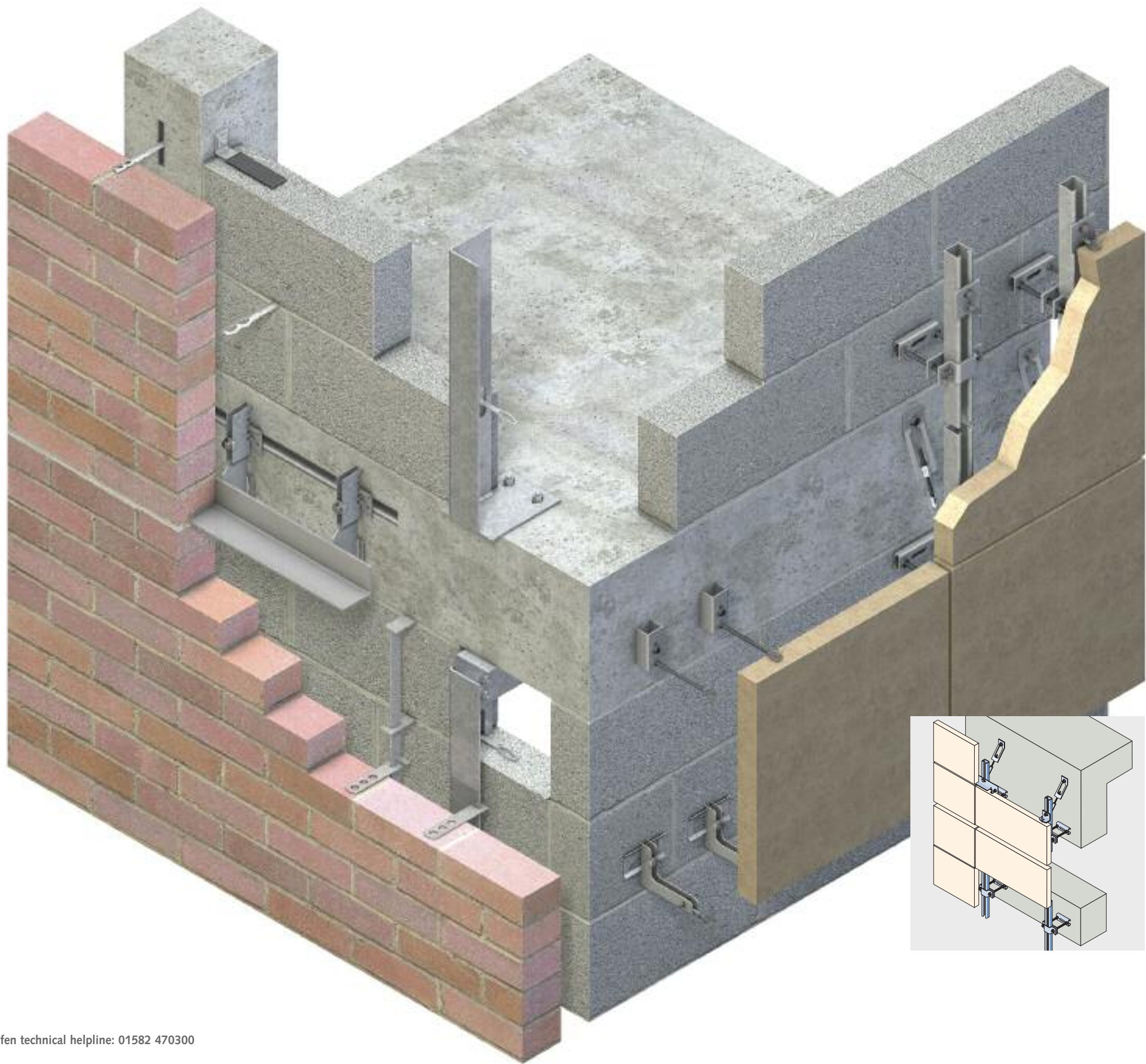
**Precast panel support**

A support system to enable off-site construction. The fast and simple installation method minimises the time spent on site. The system uses standard off-the-shelf components, obviating the need for bespoke manufacture.



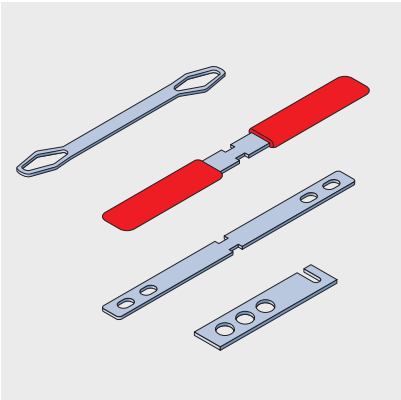


# Brickwork supports, restraints and façade systems



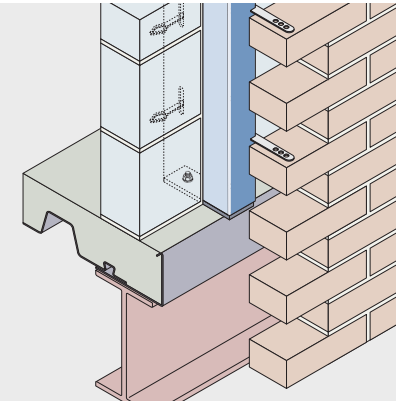
**Brickwork supports**

Using a bracket/angle system to support masonry above horizontal soft joints. High load capacity and site adjustable. A customised service adapts standard parts for supplied unique design solutions.



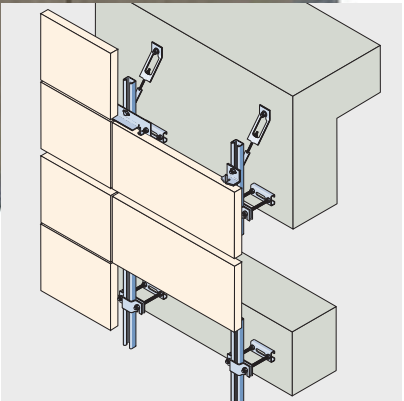
**Brickwork ties and restraints**

A comprehensive range of brickwork restraint products to provide structural stability and to transmit forces imposed by wind pressures, including cavity ties, frame cramps, brick tie channels, insulation retaining disks, and sliding brick anchors.



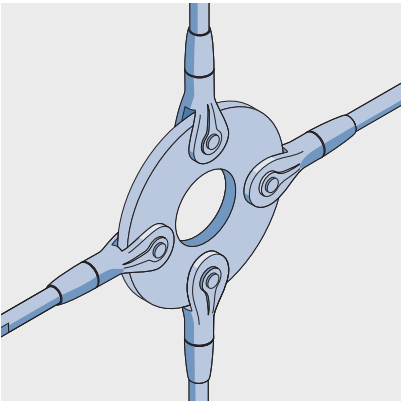
**Wind posts**

Designed to strengthen masonry panels, windposts are mainly used as vertical posts at intermediate points between structural columns. They are usually storey height and have a fixed base and sliding top cleat fixed to the structural slab.



**Stone support and restraint**

A range of stone support and restraint systems ideally suited for today's cladding requirements. The range consists of highly adjustable body anchors, grout-in anchors and sub-structure systems for wide and varying cavities. Thick stone supports and accessories are also available.

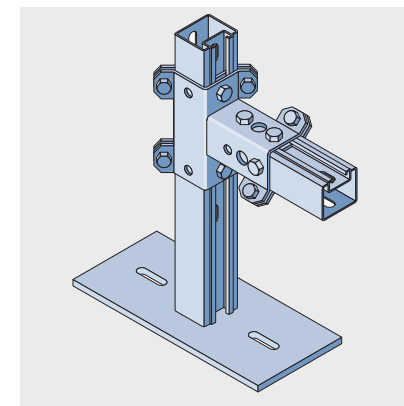


**Detan tension rod system**

Provides aesthetic solutions to architectural designs whilst meeting the structural and functional requirements of the building.

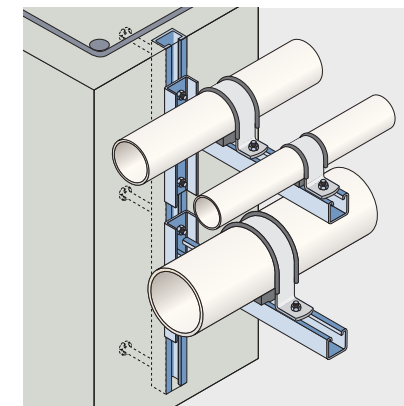


# Framing systems



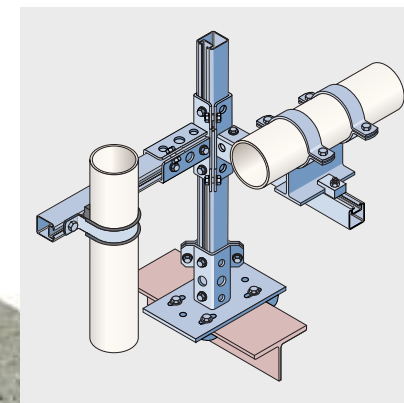
## Powerclick systems

Designed to provide an alternative to conventional structural steel for both beams and columns. Brackets are supplied pre-assembled for quick and easy installation.



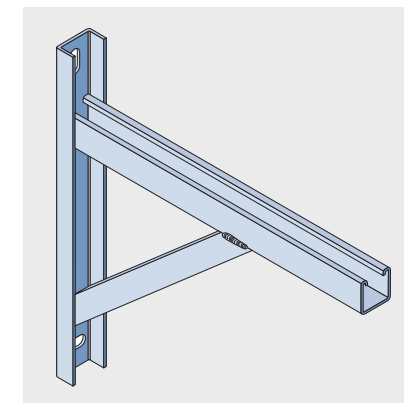
## Plain back channel

Halfen plain back channels are available in a wide range of sizes to enable effective and economic use in applications from light to heavy duty framing with dynamic loads.



## Pipe clips

Designed for economic and adjustable installation with Halfen framing systems, and available in a wide range of versions and pipe diameters from 15-530 mm.



## Cantilever brackets

Fabricated from conventional Halfen framing channels, they offer the same advantages of rapid, safe and adjustable installation.



# Halfen delivers to sites across the UK on a daily basis.



## we move to keep your project moving

- Our UK head office and warehouse complex is just off the M1 motorway at Junction 11, so we are ideally placed to serve all of the UK.
- Stock items and custom-made solutions are delivered directly to sites to meet the needs of building schedules.



Halfen Limited

Humphrys Road Woodside Estate Dunstable LU5 4TP

Tel: +44 (0)1582 470300 Fax: +44 (0)1582 470304

Email: [info@halfen.co.uk](mailto:info@halfen.co.uk) Web: [www.halfen.co.uk](http://www.halfen.co.uk)