

# infinity

Steel Rainwater Systems



CI/SfB (52) X

FEBRUARY 2019



ALUMASC

## RAINWATER™

GUTTERS AND DOWNPIPES





## About Alumasc

AWMS, part of Alumasc Group, is the first joined-up brand in integrated water management. Alumasc Group - the leading UK supplier of premium building products, systems and solutions has been promoting the efficient use, retention, recycling and disposal of water for almost 90 years.

AWMS brings together the expertise of leading industry brands in water management to provide one simple solution in water management - Rain to Drain. These include: Skyline Fascias, Soffit & Copings; Alumasc Rainwater Gutters & Downpipes; Harmer Building Drainage; Gatic Drainage & Access Covers and Wade International. Each brand is well known for innovation, quality and outstanding support and together provides customers with an unrivalled depth and breadth of range.

Alumasc Rainwater is the UK market leader for Aluminium, Cast Iron and Steel gutters and downpipes. From cutting edge-contemporary to traditional heritage, Alumasc's metal rainwater systems are manufactured to the highest standards for strength, long life and durability.

The Infinity Steel Rainwater system is manufactured in Germany using the latest in material and manufacturing technology. The Infinity range is a result of decades of continued innovation in galvanised steel rainwater systems. The systems comes with a 15 year product warranty.

### Product features

- Internal single seamed downpipe technology
- Unobtrusive seam welded outlets
- Patented single seam offset bends
- Fully drawn single piece 90° gutter angles
- High capacity deep flow gutter profile
- Robust colour finish
- 15 years product warranty - Steel only



### Features & Performance

- Lightweight, stylish & strong
- Stable material with only 1.2mm/m\*100k thermal expansion
- Easy to install dry-jointed rubber lined gutter union
- Low maintenance system with no need to repaint
- Push-fit stop-ends with EPDM rubber seal
- Steel is a malleable material therefore it will not crack over time
- Fascia brackets: short-backed for shallow fascia or longer-backed ones with pre-formed security tabs
- Environmentally friendly & fully recyclable
- Wrap around gutter outlets for complete flexibility
- New Pre-formed outlet available



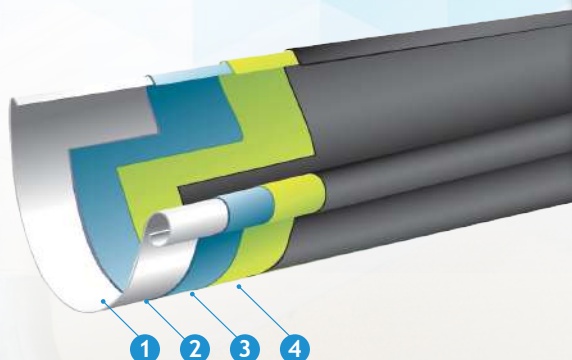


## Innovation, Design & Performance

### New ROBUST colour coated system

As the name implies, ROBUST is an innovative coating system that is extremely hard wearing. The coating consists of three layers of protection comprising zinc corrosion protection, primer bonding coat and a 'Robust' polyester top coat. The surface coating is UV and scratch resistant and has been formally performance tested as follows:

- Scratch resistant to >\_30 N in accordance to EN123523-12-2004
- UV resistant RUV 4 in accordance with EN10169-2



- 1 Galvanised steel core
- 2 Zinc / Magnesium corrosion protection layer
- 3 Primer bonding coat adds further corrosion protection
- 4 Polyester top coat for maximum UV and scratch resistance



## Steel Rainwater Colours

### Stock Colours (3 Day Delivery)

Alumasc steel is available in a plain galvanised finish or in polyester pre-coated black and anthracite finish.

Galvanised  
Steel

RAL 7016m  
Anthracite

RAL 9005m  
Black

### Additional Colour Finishes

Also available to order in 5 contemporary colours to suit your project.

RAL 9002m  
Grey White

RAL 7037m  
Dusty Grey

RAL 8014  
Sepia Brown

RAL 6005m  
Moss Green

RAL 8004m  
Copper Brown

**NEW**

### Infinity Copper or Quartz Zinc

The new Infinity Copper and Zinc rainwater systems offer a smart, contemporary and sustainable choice for all projects. Like Infinity Steel, the Copper and Quartz zinc gutter is available in "deep flow" for improved capacity.

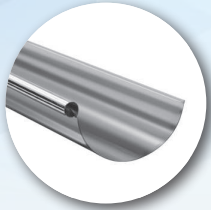
Both systems form a thin layer called patina. This patina covers the material and thus protects it from weather giving them a life expectancy of 50 years.

The copper patina visibly changes colour beautifully with age. The Quartz Zinc shade is already the colour of pre-weathered zinc will maintain its colour finish.



## Steel Rainwater Range

### Steel Half Round Gutter



100 x 75mm - HRS40

125 x 75mm - HRS50

150 x 90mm - HRS60

190 x 100mm - HRS75

### Steel Circular Downpipe



80mm (3½") - SRW1

100mm (4") - SRW2

## System Components





## 3m Gutter (Inclusive of Union Connectors)



	Galvanised	Black	Anthracite Grey
100mm	HRS40/3MA	HRS40/3MA/BLK	HRS40/3MA/GRY
	£30.46	£37.88	
125mm	HRS50/3MA	HRS50/3MA/BLK	HRS50/3MA/GRY
	£33.61	£40.15	
150mm	HRS60/3MA	HRS60/3MA/BLK	HRS60/3MA/GRY
	£41.83	£51.68	
190mm	HRS75/3MA	HRS75/3MA/BLK	HRS75/3MA/GRY
	£57.73	£68.99	

## Fascia Bracket



	Galvanised	Black	Anthracite Grey
100mm	HRS40/FB	HRS40/FB/BLK	HRS40/FB/GRY
	£3.31	£3.83	
125mm	HRS50/FB	HRS50/FB/BLK	HRS50/FB/GRY
	£3.55	£3.99	
150mm	HRS60/FB	HRS60/FB/BLK	HRS60/FB/GRY
	£3.76	£4.07	
190mm	HRS75/FB	HRS75/FB/BLK	HRS75/FB/GRY
	£7.34	£9.46	



Short-back fascia bracket

## Union Connector



	Galvanised	Black	Anthracite Grey
100mm	HRS40/UC	HRS40/UC/BLK	HRS40/UC/GRY
	£6.91	£8.23	
125mm	HRS50/UC	HRS50/UC/BLK	HRS50/UC/GRY
	£7.12	£8.46	
150mm	HRS60/UC	HRS60/UC/BLK	HRS60/UC/GRY
	£7.34	£8.64	
190mm	HRS75/UC	HRS75/UC/BLK	HRS75/UC/GRY
	£11.07	£12.72	



Needed if additional cuts are required

## Push Fit Stop Ends

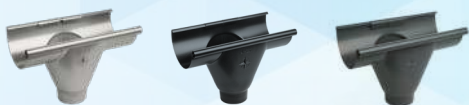


	Galvanised	Black	Anthracite Grey
100mm	HRS40/SE	HRS40/SE/BLK	HRS40/SE/GRY
	£3.30	£4.89	
125mm	HRS50/SE	HRS50/SE/BLK	HRS50/SE/GRY
	£3.52	£5.01	
150mm	HRS60/SE	HRS60/SE/BLK	HRS60/SE/GRY
	£3.81	£5.37	
190mm	HRS75/SE	HRS75/SE/BLK	HRS75/SE/GRY
	£6.77	£8.12	





## Prefab Gutter Outlet *(Inclusive of Union Connectors)*



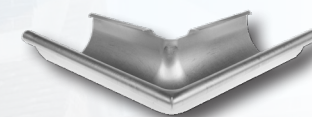
	Galvanised	Black	Anthracite Grey
100mm	HRS40/ROA80A	HRS40/ROA80A/BLK	HRS40/ROA80A/GRY
	£28.86	£31.75	
125mm	HRS50/ROA80A	HRS50/ROA80A/BLK	HRS50/ROA80A/GRY
	£32.80	£34.80	
150mm	HRS60/ROA100A	HRS60/ROA100A/BLK	HRS60/ROA100A/GRY
	£34.47	£37.12	



## 90° External Angle *(Inclusive of Union Connectors)*



	Galvanised	Black	Anthracite Grey
100mm	HRS40/EA90A	HRS40/EA90A/BLK	HRS40/EA90A/GRY
	£32.13	£40.07	
125mm	HRS50/EA90A	HRS50/EA90A/BLK	HRS50/EA90A/GRY
	£33.31	£41.04	
150mm	HRS60/EA90A	HRS60/EA90A/BLK	HRS60/EA90A/GRY
	£37.81	£47.66	
190mm	HRS75/EA90A	HRS75/EA90A/BLK	HRS75/EA90A/GRY
	£51.58	£63.17	



## Wrap Around Gutter Outlet



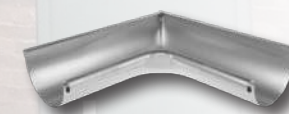
	Galvanised	Black	Anthracite Grey
100mm	HRS40/RO80	HRS40/RO80/BLK	HRS40/RO80/GRY
	£9.55	£11.81	
125mm	HRS50/RO80	HRS50/RO80/BLK	HRS50/RO80/GRY
	£10.93	£11.81	
150mm	HRS60/RO100	HRS60/RO100/BLK	HRS60/RO100/GRY
	£11.75	£13.81	
190mm	HRS75/RO100	HRS75/RO100/BLK	HRS75/RO100/GRY
	£21.91	£27.69	



## 90° Internal Angle *(Inclusive of Union Connectors)*



	Galvanised	Black	Anthracite Grey
100mm	HRS40/IA90A	HRS40/IA90A/BLK	HRS40/IA90A/GRY
	£32.13	£40.07	
125mm	HRS50/IA90A	HRS50/IA90A/BLK	HRS50/IA90A/GRY
	£33.31	£41.04	
150mm	HRS60/IA90A	HRS60/IA90A/BLK	HRS60/IA90A/GRY
	£37.81	£47.66	
190mm	HRS75/IA90A	HRS75/IA90A/BLK	HRS75/IA90A/GRY
	£51.58	£63.17	





## Gutter Rafter Arm



	Galvanised	Black	Anthracite Grey
100mm	HRS40/RB/SF	HRS40/RB/SF/BLK	HRS40/RB/SF/GRY
	£5.05	£6.56	
125mm	HRS50/RB/SF	HRS50/RB/SF/BLK	HRS50/RB/SF/GRY
	£5.27	£6.56	
150mm	HRS60/RB/SF	HRS60/RB/SF/BLK	HRS60/RB/SF/GRY
	£5.67	£6.56	



## 3m Steel Downpipe



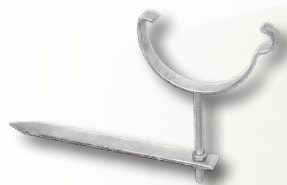
	Galvanised	Black	Anthracite Grey
80mm	SRW1/3M	SRW1/3M/BLK	SRW1/3M/GRY
	£32.69	£38.95	
100mm	SRW2/3M	SRW2/3M/BLK	SRW2/3M/GRY
	£35.90	£46.66	



## Rise and Fall Bracket



	Galvanised	Black	Anthracite Grey
100mm	HRS40/R&F	HRS40/R&F/BLK	HRS40/R&F/GRY
	£23.68	£24.96	
125mm	HRS50/R&F	HRS50/R&F/BLK	HRS50/R&F/GRY
	£25.41	£26.81	
150mm	HRS60/R&F	HRS60/R&F/BLK	HRS60/R&F/GRY
	£26.40	£27.81	
190mm	HRS75/R&F	HRS75/R&F/BLK	HRS75/R&F/GRY
	£30.96	£32.64	



	Galvanised	Black	Anthracite Grey
80mm	SRW1/PC	SRW1/PC/BLK	SRW1/PC/GRY
	£3.57	£4.17	
100mm	SRW2/PC	SRW2/PC/BLK	SRW2/PC/GRY
	£3.76	£4.50	



## Branch 72°



	Galvanised	Black	Anthracite Grey
80mm	SRW1/BR/72	SRW1/BR/72/BLK	SRW1/BR/72/GRY
	£43.04	£54.06	
100mm	SRW2/BR/72	SRW2/BR/72/BLK	SRW2/BR/72/GRY
	£47.76	£56.31	

## Offset bend 70°



	Galvanised	Black	Anthracite Grey
80mm	SRW1/OSB/70	SRW1/OSB/70/BLK	SRW1/OSB/70/GRY
	£10.38	£12.52	
100mm	SRW2/OSB/70	SRW2/OSB/70/BLK	SRW2/OSB/70/GRY
	£11.53	£13.69	

## Shoe



	Galvanised	Black	Anthracite Grey
80mm	SRW1/SH	SRW1/SH/BLK	SRW1/SH/GRY
	£19.93	£22.07	
100mm	SRW2/SH	SRW2/SH/BLK	SRW2/SH/GRY
	£20.74	£22.54	

## Offset bend 90°



	Galvanised	Black	Anthracite Grey
80mm	SRW1/OSB/90	SRW1/OSB/90/BLK	SRW1/OSB/90/GRY
	£16.98	£20.28	
100mm	SRW2/OSB/90	SRW2/OSB/90/BLK	SRW2/OSB/90/GRY
	£19.84	£23.67	



## Downpipe Connection



	Galvanised	Black	Anthracite Grey
80mm	SRW1/DC	SRW1/DC/BLK	SRW1/DC/GRY
	£6.24	£8.74	
100mm	SRW2/DC	SRW2/DC/BLK	SRW2/DC/GRY
	£7.92	£9.41	

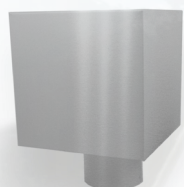
## Fixed Offset



	Galvanised	Black	Anthracite Grey
80mm	SRW1/FOS/60	SRW1/FOS/60/BLK	SRW1/FOS/60/GRY
	£31.83	£40.17	
100mm	SRW2/FOS/60	SRW2/FOS/60/BLK	SRW2/FOS/60/GRY
	£38.58	£43.71	



## Hopper Head



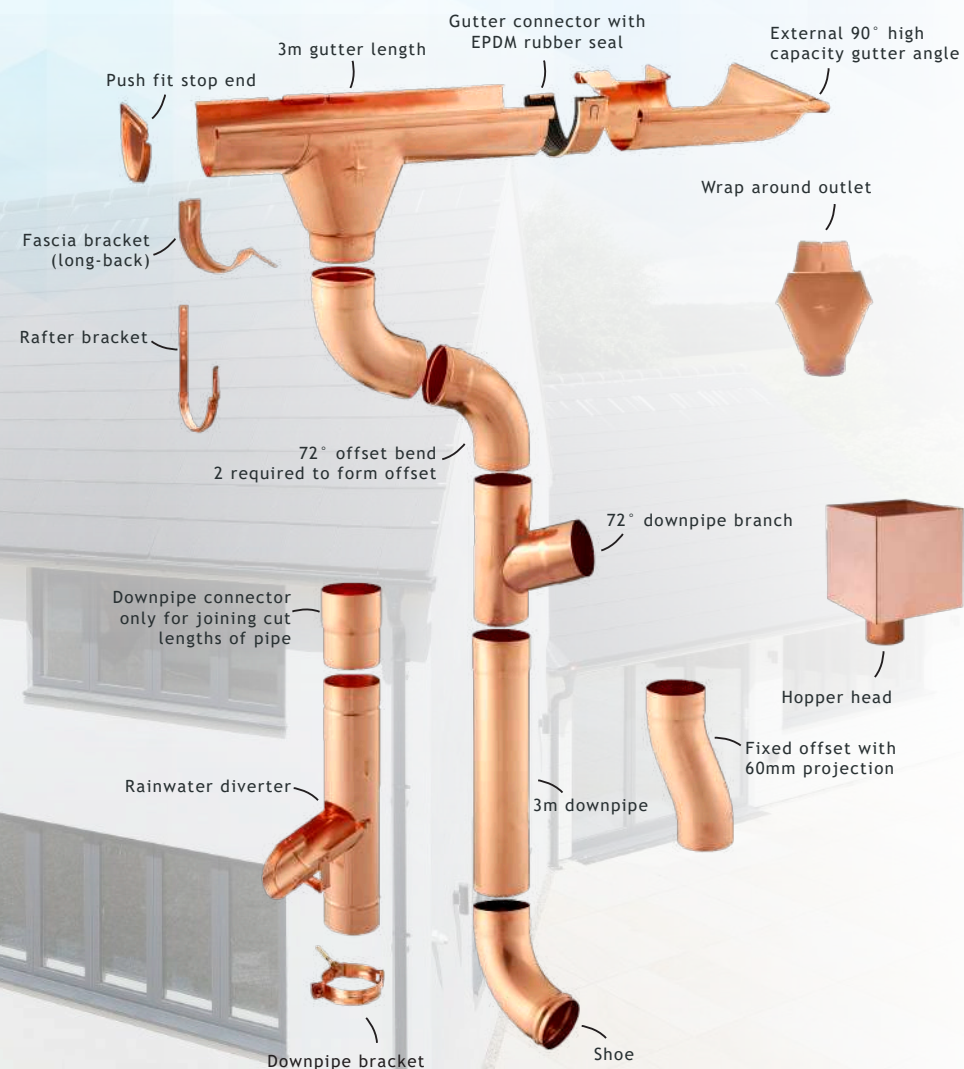
	Galvanised	Black	Anthracite Grey
80mm	SRW1/HH/GSR	SRW1/HH/GSR/BLK	SRW1/HH/GSR/GRY
	£88.57	£126.75	
100mm	SRW2/HH/GSR	SRW2/HH/GSR/BLK	SRW2/HH/GSR/GRY
	£88.57	£126.75	

## Rainwater Diverter



	Galvanised	Black	Anthracite Grey
80mm	SRW1/RDIV	SRW1/RDIV/BLK	SRW1/RDIV/GRY
	£35.90	£44.63	
100mm	SRW2/RDIV	SRW2/RDIV/BLK	SRW2/RDIV/GRY
	£39.18	£49.89	

## Copper & Quartz Zinc Gutters & Downpipes





## 3m Gutter



	Copper	Quartz Zinc
100mm	HRS40/3MA/COP	HRS40/3MA/QZ
	£107.24	£112.57
125mm	HRS50/3MA/COP	HRS50/3MA/QZ
	£119.81	£120.28
150mm	HRS60/3MA/COP	
	£181.32	



## Fascia Bracket



	Copper	Quartz Zinc
100mm	HRS40/FB/COP	HRS40/FB/QZ *
	£6.97	£5.43
125mm	HRS50/FB/COP	HRS50/FB/QZ *
	£7.54	£5.43
150mm	HRS60/FB/COP	
	£9.56	



\* N.B. Quartz Zinc colour coated galvanised steel

## Union Connector



	Copper	Quartz Zinc
100mm	HRS40/UC/COP	HRS40/UC/QZ *
	£13.28	£10.14
125mm	HRS50/UC/COP	HRS50/UC/QZ *
	£13.67	£10.14
150mm	HRS60/UC/COP	
	£20.21	

Needed if additional cuts are required

\* N.B. Quartz Zinc colour coated galvanised steel

## Push Fit Stop Ends



	Copper	Quartz Zinc
100mm	HRS40/SE/COP	HRS40/SE/QZ
	£6.86	£2.72
125mm	HRS50/SE/COP	HRS50/SE/QZ
	£6.86	£2.81
150mm	HRS60/SE/COP	
	£10.98	





## Wrap around gutter outlet



	Copper	Quartz Zinc
100mm	HRS40/RO80/COP	HRS40/RO80/QZ
	£18.04	£23.43
125mm	HRS50/RO80/COP	HRS50/RO80/QZ
	£19.09	£23.86
150mm	HRS60/RO100/COP	
	£40.96	

## 90 degree external angle



	Copper	Quartz Zinc
100mm	HRS40/EA90A/COP	HRS40/EA90A/QZ
	£52.77	£41.14
125mm	HRS50/EA90A/COP	HRS50/EA90A/QZ
	£53.16	£42.00
150mm	HRS60/EA90A/COP	
	£67.64	

## Gutter rafter arm



	Copper
100mm	HRS40/RB/SF/COP
	£6.60
125mm	HRS50/RB/SF/COP
	£6.80
150mm	HRS60/RB/SF/COP
	£7.01

## 90 degree internal angle



	Copper	Quartz Zinc
100mm	HRS40/IA90A/COP	HRS40/IA90A/QZ
	£52.77	£41.14
125mm	HRS50/IA90A/COP	HRS50/IA90A/QZ
	£53.16	£43.00
150mm	HRS60/IA90A/COP	
	£58.42	



## 3m Steel Downpipe



	Copper	Quartz Zinc
80mm	SRW1/3M/COP £109.11	SRW1/3M/QZ £111.00
100mm	SRW2/3M/COP £166.73	

## Offset bend 70°



	Copper	Quartz Zinc
80mm	SRW1/OSB/70/COP £13.48	SRW1/OSB/70/QZ £13.57
100mm	SRW2/OSB/70/COP £19.24	



## Offset bend 90°



	Copper	Quartz Zinc
80mm	SRW1/OSB/90/COP £13.48	SRW1/OSB/90/QZ £19.86
100mm	SRW2/OSB/90/COP £19.24	



## Pipe Clip



	Copper	Quartz Zinc
80mm	SRW1/PC/COP £8.25	SRW1/PC/QZ £7.71
100mm	SRW2/PC/COP £11.29	

\* N.B. Quartz Zinc colour coated galvanised steel

## Fixed Offset



	Copper	Quartz Zinc
80mm	SRW1/FOS/60/COP £27.10	SRW1/FOS/60/QZ £21.57
100mm	SRW2/FOS/60/COP £35.15	





## Branch 72°



	Copper	Quartz Zinc
80mm	SRW1/BR/72/COP	SRW1/BR/72/QZ
	£43.77	£66.14
100mm	SRW2/BR/72/COP	
	£57.30	

## Shoe



	Copper	Quartz Zinc
80mm	SRW1/SH/COP	SRW1/SH/QZ
	£20.78	£16.15
100mm	SRW2/SH/COP	
	£26.93	

## Downpipe Connection



	Copper	Quartz Zinc
80mm	SRW1/DC/COP	SRW1/DC/QZ
	£7.54	£6.71
100mm	SRW2/DC/COP	
	£10.01	

## Hopper Head



	Copper	Quartz Zinc
80mm	SRW1/HH/GSR/COP	SRW1/HH/GSR/QZ
	£219.53	£121.00
100mm	SRW2/HH/GSR/COP	
	£237.39	

## Rainwater Diverter



	Copper	Quartz Zinc
80mm	SRW1/RDIV/COP	SRW1/RDIV/QZ
	£52.69	£48.29
100mm	SRW2/RDIV/COP	
	£61.69	



## Frequently asked questions

**Q: How long should my gutters last?**

A: The Infinity roofline system is manufactured in Germany using the latest in both material and manufacturing technology. The steel system comes with a 15 year product warranty and will last in excess 25 years with regular maintenance.

**Q: Is the system low maintenance?**

A: The only recommended maintenance is an annual clearing of leaves and debris after the autumn leaves have fallen. The outside surface can simply be washed down with warm soapy water to remove any green moss or algae.

**Q: Will the colour fade?**

A: The natural Galvanised finish will simply weather over time and dull slightly to give a natural oxidised finish. The Colour ranges are UV resistant and unlike plastic will not fade or crack in the sun.

**Q: Do steel gutters crack like plastic?**

A: Steel is a malleable material and extremely strong, unlike plastic steel has low thermal expansion which means that it is not vulnerable to the varying temperatures of the UK climate and therefore will not crack.

**Q: Will the joints leak?**

A: The infinity system uses a tried and tested jointing system that incorporates a high quality EPDM rubber seal together with a hinged clasp mechanism that ensures complete joint integrity and leak free joints.

**Q: Can Galvanised Steel be used with any roof covering?**

A: Most standard roof coverings such as slate, clay tiles, concrete tiles and metal sheets are compatible with Galvanised Steel but specialist material such as cedar shingles or other wooden roof tiles should be avoided due to the acidity of the water run-off. Infinity is available in Zinc and Copper for these applications, please enquire with our technical service team for advice on such applications.

**Q: I care about the environment and want to know if steel can be recycled at the end of its life?**

A: The Infinity Steel Rainwater system is 100% recyclable, unlike plastic, metal products have a commodity value at the end of their life which means that they are much less likely to go into landfill.

**Q: How do I calculate what I need?**

A: Download our drainage calculator at [www.alumascrainwater.co.uk](http://www.alumascrainwater.co.uk), or if you have a drawing for your project then you can send it to us and we'll work out exactly what you need and provide a written quotation. If you don't have any drawings and need to talk through your project then call us on 01536 383 810.

**Q: I'm worried about the coating being scratched or damaged during installation?**

A: Due care should be taken during installation, however, the infinity gutter length are supplied with a protective film that is peeled off during installation. Furthermore the ROBUST coating is scratch resistant and is pretty durable during and long after installation.

**Q: Where can I find a recommended installer?**

A: Infinity roofline system can be installed by most competent builders or DIYers, For further information on our recommended installer network or to discuss your project call us on: 01536 383 810

**Q: What if I have difficulty in fitting your guttering?**

A: Infinity is a very easy to fit, we have installation guides available online at [www.alumascrainwater.co.uk](http://www.alumascrainwater.co.uk) or if you prefer to speak to someone then call one of our helpful technical team on 01536 383 810

**Q: The fascia overhangs the wall by 350mm. How do I fix my downpipes so they fall in line with the wall?**

A: You need to incorporate an offset, or combine two bends to create a 'swan neck' offset.

**Q: I don't have a fascia board on my property how would I fix my gutter?**

A: You can use either a top or side rafter bracket, which of these will be suitable depends on how much access you have to rafters. We also offer rise and fall brackets - a stake is bedded between the brick-work with a support bracket with alterable height so you can incorporate a fall should you wish.

**Q: Why is the lifetime value of steel cheaper than plastic?**

A: When replacing your guttering and roofline system, the material is only one element of the cost, installation and scaffolding costs can amount to a significant part of the overall cost therefore when you consider having to replace plastic 2-3 times to steel's 1 life-cycle then steel becomes the obvious choice for long term, low maintenance, low cost trouble free protection for your home. And remember, it won't fade, crack or leak.

If you have any further questions just call us on 01536 383 810

## Technical and Customer Service Support

**AWMS offers a full technical and support service for all projects.**

### This includes:

- Rainwater Flow calculations
- Take-offs from drawings
- BIM files, CAD drawings and NBS specifications
- Site surveys
- Detailing advice
- Samples & Colour swatches on request



For Project Quotations, Customer Service, Technical Advice or Sales Orders call: 01536 383 810

Literature Hotline & Merchant Support Team: 01536 383 810



[www.alumascrainwater.co.uk](http://www.alumascrainwater.co.uk) • [info@alumascwms.co.uk](mailto:info@alumascwms.co.uk) • 01536 383 810



ALUMASC

**RAINWATER™**

GUTTERS AND DOWNPIPES

## Call our Merchant Support Team for help with:

- Branch incentives
- In-branch product training
- Point of sale for trade counters
- Site surveys
- Product samples
- Marketing support
- Trade mornings



Alumasc Water Management  
Solutions  
Station Road  
Burton Latimer  
Kettering  
Northamptonshire  
NN15 5JP

[info@alumascwms.co.uk](mailto:info@alumascwms.co.uk)

### Contacts:

For Project Quotations, Customer Service,  
Technical & Sales Orders call:

**01536 383 810**

Literature hotline:  
**0808 100 2008**

[www.alumascwms.co.uk](http://www.alumascwms.co.uk)