

# GATIC®

Uniclass

L731

CI/SfB

(52.5)

lh

**GATIC®** Pave. High-performance  
access covers for paved areas.

2017



**Pave**

## Product Features and Benefits

Gatic Pave is a comprehensive system of single, duct and multi span access covers and frames for use in paved areas where an aesthetic finish is required in environments up to D400 loading.



### Cover types

Covers are recessed for an aesthetic paviour infill.

### Applications

Urban public places and parking areas.

### Materials

The components of Pave covers are manufactured from: Ductile iron to BS EN 1563 and structural steel sections (removable beams) to BS 4-1.

### Non-rocking

Correctly installed, Pave covers will be non-rocking under slow moving traffic.

### Watertight

A film of graphite grease between the contact faces of Gatic units provides a gas and airtight seal, and a watertight joint under normal rainwater conditions.

### Secure and vandal resistant

Gatic covers cannot be removed without the correct lifting key so unauthorised removal is virtually impossible. Locking bolts can be fitted to Gatic cover keyways as an additional security feature. Gatic recommends that due to their weight with paviour infill, when Pave covers are removed they are lifted vertically using Gatic's mechanical lifting keys.

### Ventilation

If you require ventilated covers please refer to Gatic.

### Closed keyways

Pave cover keyways are closed and fitted with plastic plugs to prevent the ingress of dirt.

### Loadings

All Pave covers will withstand test load and maximum permanent set criteria specified in BS EN 124: up to D400.

### Secure support

The clear opening width between supporting frames are at least 7mm greater than the pit/chamber design to allow for minor deviations in pit construction dimensions.

### Beam wallbox

Supporting beams in Pave Multispan units are easily removed with appropriate lifting equipment for access to the total chamber area. Beam wallboxes do not project into the chamber opening.



Loading Group | D400

### Finishes

Covers, removable supporting steelwork and side frames are supplied with a galvanised finish.

### Installation

Consignments of Pave units are accompanied by comprehensive installation instructions.

### Environmental commitment

Responsibility towards the environment is our primary concern. Our customers often now demand products that are made from recycled and recyclable materials, supplied by companies with robust environmental policies to reduce the environmental impact of their projects for future generations.

To meet these requirements we have an integrated Quality (BS EN ISO 9001) and Environmental (BS EN ISO 14001) Management System which encompasses the design, manufacture and management systems within the company and ensures our commitment to continuous environmental improvements regarding the manufacture and design of all our products in the following ways:

- Minimise environmental impact
- Commit organisational resources to energy management
- Reduce energy costs
- Give high priority to energy efficient investments
- Consider life cycle energy costs for all new projects
- Minimise CO<sub>2</sub> emissions year on year
- Use energy from sustainable resources wherever possible

To achieve these goals we have put in place the necessary systems and controls to meet demanding environmental targets and to make sure that these are maintained for the future benefit of the environment and our customers alike.

### Gatic services

Gatic offers a full support service to specifiers and contractors, including Computer Aided Design, AutoCAD compatible details of all Gatic products are available. Please consult our technical department for assistance.

In view of our commitment to product improvement, we reserve the right to alter designs without notice. Design changes will not adversely affect the performance or loading capability of our products.

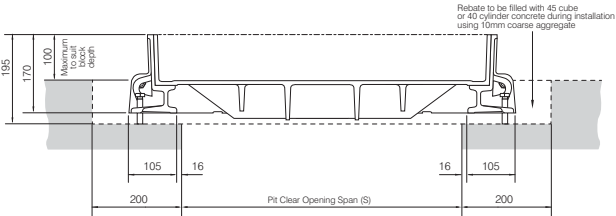




Single Covers and Frames

Suitable for 11.5 tonne slow moving pneumatic wheel load. Cover test load - 400kN

Pit clear opening sizes L x S (mm)	Cover type
600 x 600	PAV
750 x 600	PAV
750 x 750	PAV



Duct & Trench Covers and Frames

Suitable for 11.5 tonne slow moving pneumatic wheel load. Cover test load - 400kN

Pit clear opening spans (mm)	Cover type
600	PAV
750	PAV

Pave Covers

Pave covers can be supplied to cover ducts or trenches as straight runs.

Pit clear opening spans (mm)	Cover type	Standard Pit clear opening length							
		1300	1450	1600	2000	2150	2300	2450	2700
600	PAV	2	2	2	3	3	3	3	4
750	PAV	2	2	2	3	3	3	3	4

Pit clear opening spans (mm)	Cover type	Standard Pit clear opening length							
		3150	3300	3400	3550	3700	2850	4000	4100
600	PAV	4	4	5	5	5	5	5	6
750	PAV	4	4	5	5	5	5	5	6

The number shown indicates the quantity of cover parts. Other cover sizes may be available. Please refer to our technical department.





## Multispan Covers and Frames

Suitable for 11.5 tonne slow moving pneumatic wheel load. Cover test load - 400kN

### Specification

Below is sample specification information and notes for Multispan Pave covers and frames.

#### Loading group Gatic D400

11.5 tonne slow moving pneumatic wheel load – test load 400 kN.

#### Materials

Covers: Ductile iron components to BS EN 1563.

Structural steel removable beams to BS 4-1

#### Finishes

Covers, removable supporting steelwork and side frames are supplied with a galvanised finish.

#### Surround concrete by customer

Concrete strength, using 10mm coarse aggregate, to be:

45N/mm<sup>2</sup> for a test cube of 150mm or

40N/mm<sup>2</sup> for a test cylinder of 150mm diameter x 300mm high.

#### Installation

In accordance with instructions supplied by Gatic.

To specify use size and description format as follows:

**Pave Multispan Recessed covers and frames** Cover type PAV recessed

Multiple access covers recessed for concrete infill with removable beams.

.... in no. .... (length) x .... (span) mm pit clear opening galvanised multi span cover and frame.

Pave Type PAV Ductile Iron Recessed Cover in .... parts complete with

.... in no. .... x .... mm galvanised removable support beam spanning the .... (length) mm way.

Suitable for Loading Group D400 – 11.5 Tonnes Slow Moving Wheel Load (pneumatic tyre).

Standard pit clear opening sizes are shown on Page 7.

Beam sizes and other dimensions are shown on Page 8.

## Multispan Covers and Frames

Suitable for 11.5 tonne slow moving pneumatic wheel load. Cover test load - 400kN

### Product Selection

Refer to the table to identify which cover and beam configuration you require against pit clear opening length (L) and pit clear opening span (S). All dimensions are in millimetres.

		Pit clear opening length (L) mm						Beam centres (mm)				
		2 parts		3 parts		4 parts		A	B	C	D	E
Pit clear opening span (S) mm	2 parts 1 beam	1300 1380 1450 1530 1600	1600	2000 2150 2300 2450	2450	2700 2850 2900 3000 3150 3300	3300	690	690			
		4 part (2x2) recessed multispan cover with 1 removable support beam		6 part (3x2) recessed multispan cover with 1 removable support beam		8 part (4x2) recessed multispan cover with 1 removable support beam		690	690			
	3 parts 2 beam	2160 2310 2460 2610						690	780	690		
		6 part (2x3) recessed multispan cover with 2 removable support beams		9 part (3x3) recessed multispan cover with 2 removable support beams		12 part (4x3) recessed multispan cover with 2 removable support beams		690	930	690		
	4 parts 3 beam	2940 3090 3240 3390 3540						690	780	780	690	
Pit clear opening span (S) mm	5 parts 4 beam	3720 3870 4020 4170 4320 4470						690	780	780	780	690
		10 part (2x5) recessed multispan cover with 4 removable support beams		15 part (3x5) recessed multispan cover with 4 removable support beams		20 part (4x5) recessed multispan cover with 4 removable support beams		690	780	930	780	690
								690	780	780	780	840
								690	930	930	930	690
								840	930	780	930	840

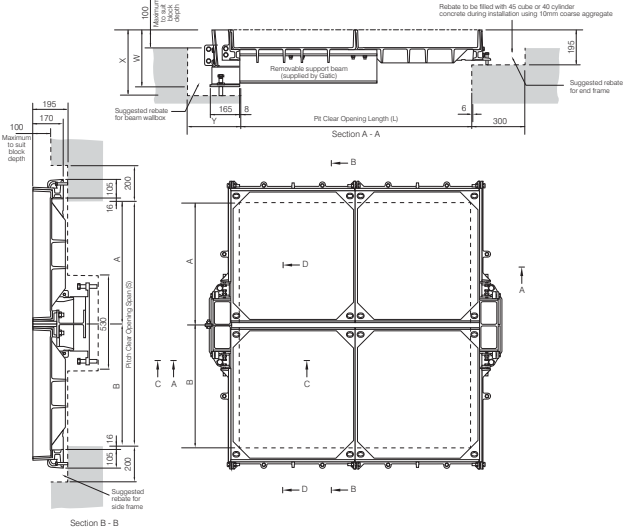
Note: For other pit clear opening sizes please refer to our technical department

Multispan Covers and Frames



■ Covers recessed for pavour infill

The details below show a typical plan and sections of a Pave Multispan Cover.



Multispan Covers and Frames

**Beam Size**

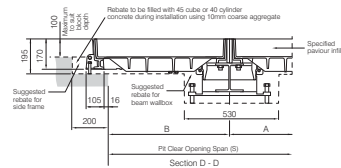
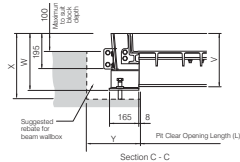
The required beam size for Multispan covers is dependent on the pit clear opening length and the loading group.

The table shows maximum beam length against beam size. The removable support beams are supplied by Gatic.

The table also indicates dimensions of the beam wallbox and rebate to suit different beam sizes. See also the accompanying section details.

Support beam size chart

Removable support beam size (mm)	Max pit clear opening length (L)	Beam wallbox dimensions			
		V	W	X	Y
152 x 152 x 37kg/m UC	1300	297	319	360	300
203 x 203 x 52kg/m UC	1750	341	363	405	300
305 x 165 x 54kg/m UB	2300	445	467	510	300
356 x 171 x 67kg/m UB	2850	498	520	560	300
457 x 152 x 82kg/m UB	3450	601	623	665	300
533 x 210 x 122kg/m UB	3900	680	702	745	300



## GATIC Mechanical lifting keys



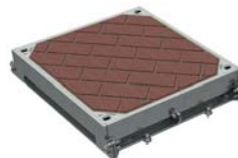
Gatic recommends that due to their weight with pavioir infill, when Pave covers are removed they are lifted using Gatic's Mechanical lifting keys.

A Mechanical lifting key is inserted into each of the four keyways found on all Gatic Pave covers which are designed and tested for use with cranes and other mechanical devices.

Full operating and installation instructions are available from Gatic.



## GATIC Pave – Applications gallery



### Interactive Website

Our website is ultra user-friendly and offers full details of our Slotdrain surface water drainage systems, channel drainage and linear drainage. This includes features and benefits, sizes and load categories, as well as design service and contact information.

The website also contains dedicated Access Covers and StreetWise sections.



### COEX Brochure

Gatic COEX is a highly economical solution to protecting underground services. COEX is a system of single duct and multi span access covers and frames for areas of slow moving traffic, with a choice of cover types - concrete infill recessed or solid top. The range includes single covers, duct and trench covers, and multi span access covers. There are solutions for straight run and more complex configurations, useful selector mechanisms for different scales of job, and systems offered to suit both medium and heavy duty applications.



### Assisted Lift Brochure

Illustrated literature giving advice and general information on safe handling, installation and maintenance of all our products.



### Access Covers Brochure

A detailed manual with full technical detail on the complete range of our access covers and frames for all loading groups.

The manual includes product selector guides and installation information. Also available is complementary interactive software that allows you to design your own drainage system. Register your details with us on the MyGatic section of our website; alternatively, register by phone or email.



# GATIC®

Gatic, Poulton Close,  
Dover CT17 0UF  
England

Tel: +44 (0) 1304 203 545  
Fax: +44 (0) 1304 215 001  
Email: [info@gatic.com](mailto:info@gatic.com)  
Website: [www.gatic.com](http://www.gatic.com)

### Access Covers Product Selector Software

Our Gatic Access Covers Product Selector software can be sent to you on a USB at no cost. Simply register your details with us on the MyGatic section of our website, or by emailing/phoning us.



All reasonable care has been taken in the preparation of this brochure, all information, recommendations and guidance notes on the use of The Products are made without guarantee since the conditions of use are beyond the control of Alumasc Exterior Building Products Limited (The Company). The customer is responsible for ensuring that each product is fit for its intended purpose and that conditions for use are suitable. The information contained in this brochure and advice arising therefrom is free of charge and accordingly on the terms that no liability nor liability for negligence will attach to the Company or its servants in relation to any such service arising out of or in connection with this brochure. The Company pursues a policy of constant product development and information contained in this publication is therefore subject to change without notice.