



AWMS Introduction Pack





Alumasc Overview

The Alumasc Group plc has over 600 employees, generating a turnover of around £100 million. The aim is to focus on high quality, environmentally responsible building products within the construction arena in order to deliver first class customer service, technical support, long-term solutions and lasting relationships.

Alumasc is a UK based supplier of premium building products. The majority of the group's business is in the area of sustainable building products which enable customers to manage energy and water use in the built environment.

All Alumasc businesses have strong UK market positions within their own individual market niches and several are market leaders. Alumasc sustains this strong strategic positioning by offering customers quality products, service and trust. For certain brands, Alumasc is seeking to leverage UK successes in international markets, with particular focus in America, the Middle and Far East, and Europe.

Alumasc fosters an entrepreneurial, achievement orientated culture whereby businesses are encouraged to innovate and respond quickly to local market needs within a cohesive group strategic and management framework. Alumasc businesses also benefit from the group's financial strength.

Alumasc Water Management Solutions (AWMS) is the new name in the industry for proven water management. It's a new joined-up brand that harnesses the expertise of four trusted brands in water management: Alumasc has been promoting the efficient use, retention, recycling and disposal of water within the built environment for over 80 years. Now, it combines the knowledge and unique benefits of these four brands to provide one simple solution in water management.



In addition to complying with environmental legislation, Alumasc is committed to developing its own measures to limit the adverse effects of its activities on the environment. To this end, Alumasc operates an environmental policy that fully integrates all aspects of company activities.

Quality

ISO 9001: 2008 Quality Management

Alumasc operates a quality management system which is independently audited to ISO 9001: 2008 certificate number 02/1832. The ISO 9001 framework governs the management of many aspects of Alumasc support services, manufacturing and transport operations. Alumasc extends quality management to its network of improved installers for single source accountability and peace of mind.



Sustainability

Alumasc actively pursues sustainability in the full range of products it offers and, with its partners and its suppliers, is committed to putting consideration for the built and wider environment at the core of all aspects of current business and future development.

ISO 14001: 2004 Environmental Management

Alumasc's manufacturing sites at St Helens, Merseyside and at Burton Latimer, Northamptonshire are audited to the ISO 14001: 2004 Environmental Management Standard. Alumasc is committed to achieving improvements across all of its operating sites, not only as a good neighbour to the surroundings of manufacturing plants, but in the responsible sourcing of raw materials and monitoring of the impact on the environment as a whole.



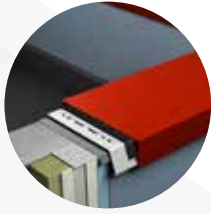
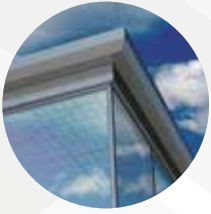
BREEAM Standards

BREEAM points, as a framework for analysis and scoring, allow easy comparison of the relative merits of different construction types and also comparisons between different construction product groups. The BREEAM points system promotes the use of materials with a proven sustainable message and allows designers to differentiate between products with true ecological credentials and those not achieving the benchmark.



SKYLINE®

FASCIA SOFFIT COPINGS



Skyline's high performance weatherproofing and integrated guttering systems provide industry leading rainwater protection. Skyline includes Fascias, Soffits, Copings, Cills & Surrounds.

ALUMASC

RAINWATER™

GUTTERS AND DOWNPIPES



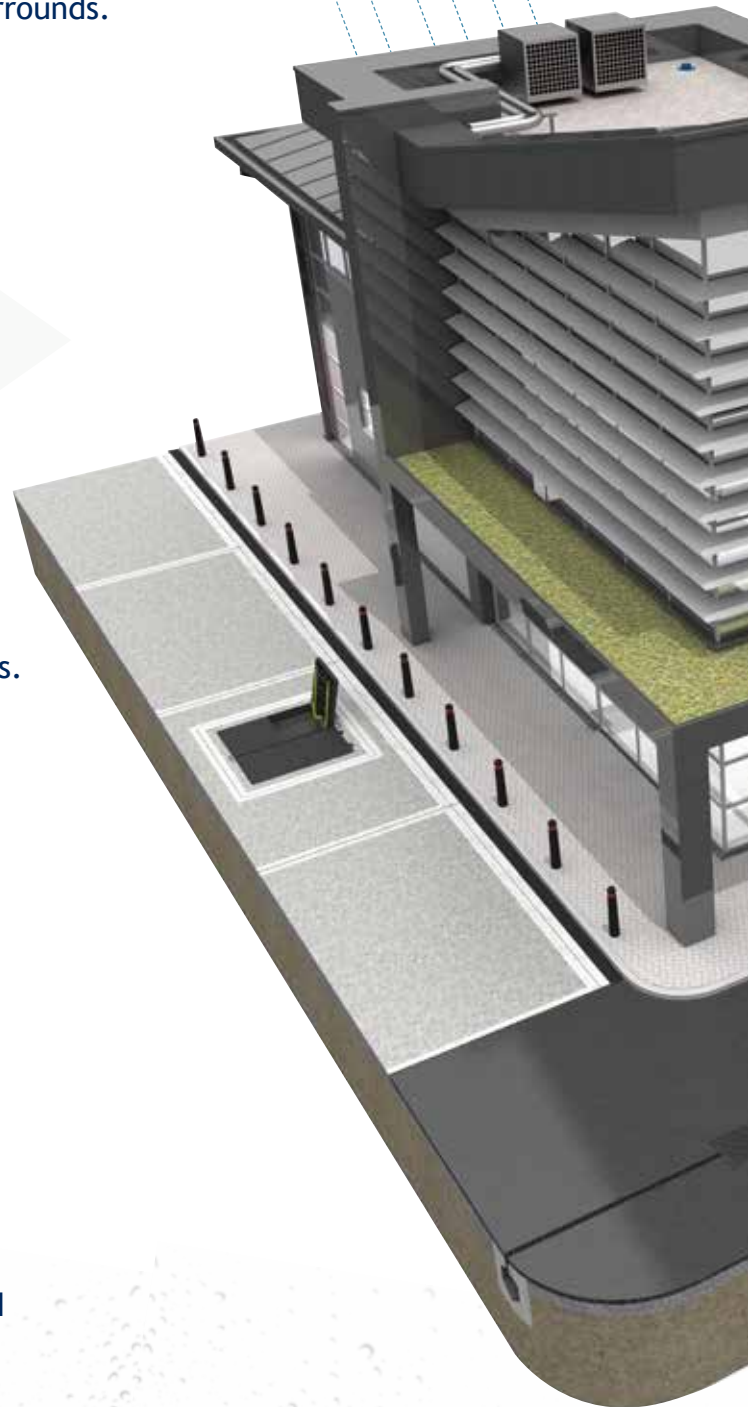
Alumasc Rainwater is the UK Market leader for aluminium, Cast Iron & Steel Gutters and Downpipes. From Cutting edge contemporary to traditional heritage.

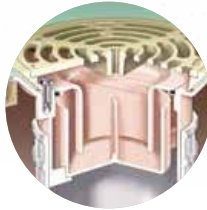
HARMER®

BUILDING DRAINAGE

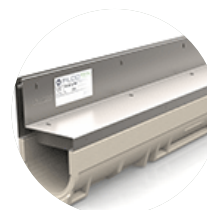
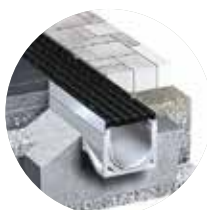


Harmer Building Drainage manages water inside and outside the building. its systems allow designers, contractors and clients to realise the design, performance and installation benefits of fully integrated drainage solutions.



**WADE[®]**
BUILDING DRAINAGE

A UK company with more than 50 years experience in the industry, Wade is established as a leading manufacturer of quality drainage products. our success is attributed to an ongoing commitment to put technology to practical use.

**GATIC[®]**
DRAINAGE & ACCESS COVERS

Gatic Civil Drainage specialises in integrated surface water management. For almost 90 Years Gatic Drainage systems have been used to capture control and return run-off safely in the natural water cycle.

The background of the entire page is a light grey image showing various types of building drainage products, including circular and rectangular grates, some with raised patterns. In the top left corner, there is a blue rectangular box containing the Harmer logo and the text 'BUILDING DRAINAGE'.

HARMER®

BUILDING DRAINAGE

Harmer Drainage is a UK market leading brand in building drainage Over 40 years of market leading innovation. The most comprehensive Building Drainage range in the market place Commercial buildings internal & external Long term strategic supplier relationships with market leading manufacturers

Harmer Roof Outlets

Aluminium Range

Suitable for all regular flat roof drainage applications, these high-performance metal roof outlets come in a range of options in lightweight, non-corrosive and highly durable materials.

Cast Iron Range

Offer extreme strength and durability so are ideal for load bearing applications, with the Harmer range offering unparalleled longevity for flat roof drainage systems that are built to last.

Insulated Range

Prevent condensation forming on the underside which makes them ideal in metal deck warm and inverted roof installations, with this range being available in plenty of configurations to suit numerous drainage applications.

Modulock Channel Drainage

The advanced, linear, steel drainage ranges are for use within a raised deck structure.



Cast Iron Floor Drains

Harmer Cast Iron Floor Drains offer an all new range of drain bodies from shallow sump to deep sump with a wide selection of grate & bezel designs with three connection types, available in Satin Stainless finish or Nickel Bronze. Also complemented with a range of cast iron floor drain assemblies which are ideally suited for composite or asphaltic floor applications.

Stainless Steel Floor Drains

A new high performance range of stainless steel standard & compact floor drains

Aluminium Floor Drains

Harmer Aluminium Floor Drains are designed for use in interior drainage applications on all types of flooring. This versatile, fully engineered range is available trapped or untrapped, with a new extensive range of satin stainless or nickel bronze grates.



HARMER®

BUILDING DRAINAGE

Harmer Shower Drains

Aluminium Range

A precision-engineered, high-performance range of drain bodies available with a choice of caps and grates, the Aluminium range can achieve flow rates of up to 1.3litres per second with free running waterways for self-cleaning.

ABS Range

With drain bodies manufactured from antimicrobial ABS plastic compound this range is ideal for applications where hygiene is a primary concern, with innovative design features including an easy-clean cap and fast-flow trap reducing dirt build-up and controlling the growth of bacteria.

Stainless Steel Channel Drain

The new high performance stainless steel linear wet room drain and shower drains. Available with a choice of grating options for tiled or sheet vinyl flooring to suit any wet room application.



Harmer SML

The Harmer SML above and below ground lightweight cast iron pipework system is a dry-jointed pipework system at the leading edge of cast iron technology. Agrément Certified and fully compliant with BS EN 877 and with CE Mark conformity. With its comprehensive range of fittings and accessories, SML is the ideal soil and waste system which can also be used for rainwater installations.

A complete soils and waste pipework system from rain to drain

- Covers installation from pipework connection to stacks and underground sewer connections
- Also suited to rainwater installations in conjunction with Harmer Roof Outlets
- Pipes available in standard 3m lengths, in diameters of 50mm to 400mm
- Choice of ductile or stainless steel couplings
- Lightweight, strong and durable
- Excellent noise attenuation, tested to BS EN 14366: 2004
- Non-combustible - fire protection collars not necessary
- High tensile strength
- Inherent resistance to external accidental damage and vandalism



Wade Drainage is a leading manufacturer of quality drainage products. Over 50 years' experience in the industry. Leading manufacturer of drainage products for use in and around buildings. Products are installed worldwide in shopping centres, hospitals, prisons, oil rigs, etc. We offer a comprehensive range of drainage products with choices of material, size, style, finish and accessories.

Wade Roof Outlets

3400 series

Medium sump cast iron roof drain outlets with choice of outlet size and connection type; with polycarbonate dome or sherardized cast or ductile iron grating.

3100 series

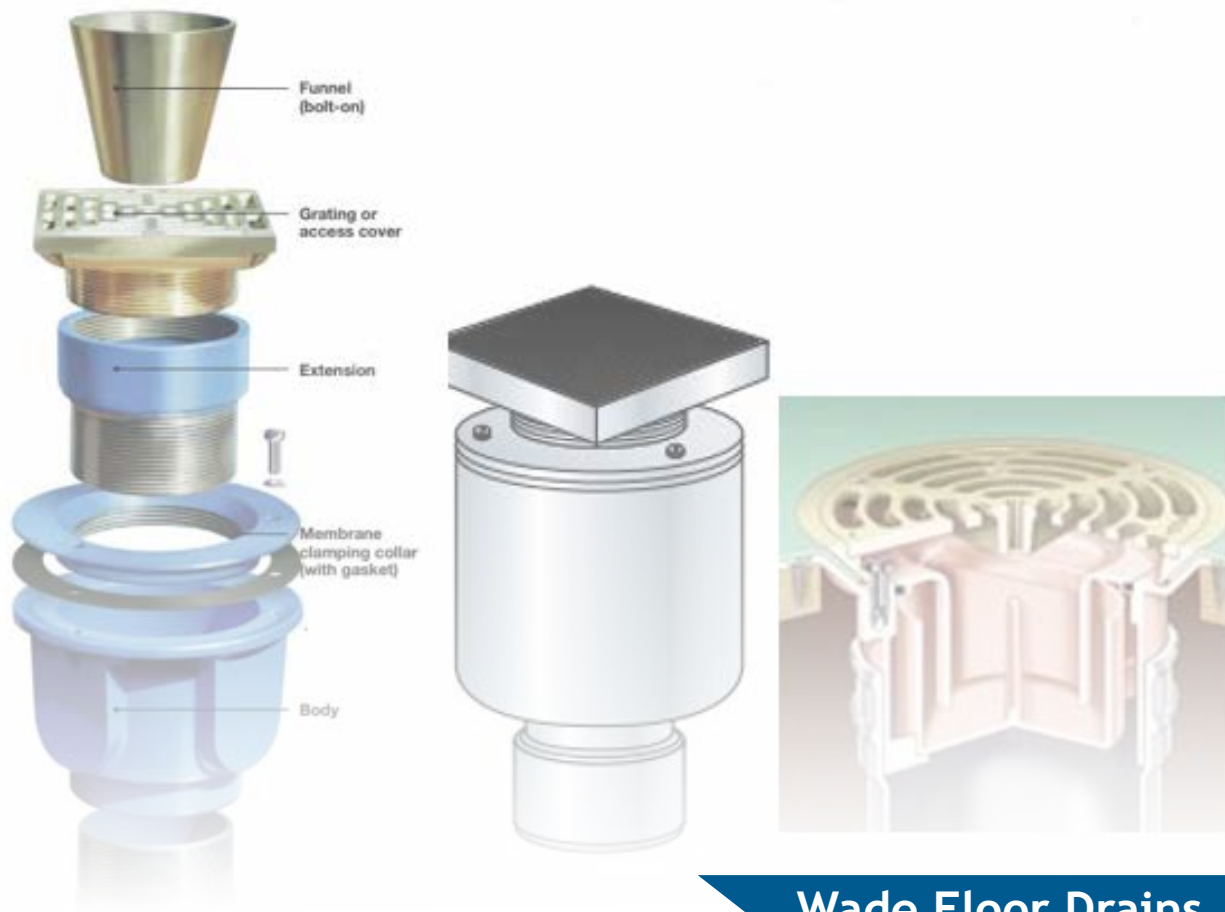
Deep sump cast iron roof drain outlets with choice of outlet size and connection type; with polycarbonate dome or sherardized cast or ductile iron grating.

Parapet Outlets

Reversible cast iron drain body to provide horizontal or vertical threaded outlet. May be used in conjunction with our downspout nozzles.

Balcony Outlets

Cast iron, for drainage on balconies with an asphalt finish.



Wade Floor Drains

Vari-Level floor drains, floor gullies and access covers

Rodding points have a fine thread to enable accurate installation at finished floor level. The range covers all floor finishes, including drainage in tiled floors, drainage in resin floors, drainage in vinyl finished floors and drainage in concrete floors, with trapped and non-trapped versions.

Multi-Level floor gullies

Height adjustable, for use in unfinished floors (trapped & non-trapped versions available). Uni-Level floor drains are for use with asphalt/composition finished floors.

Stainless steel floor gullies

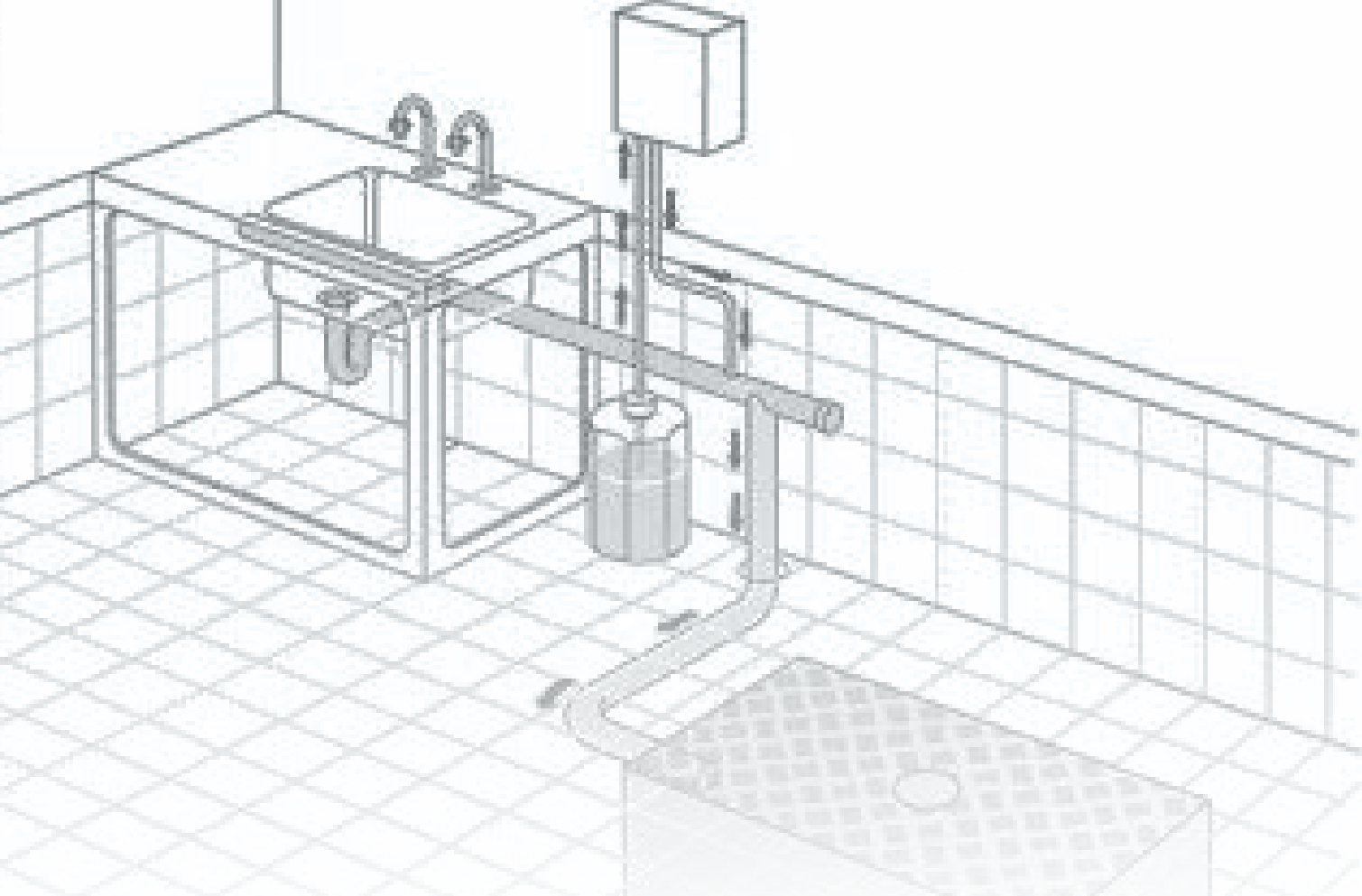
Suited for use in areas associated with food production (trapped & non-trapped versions available).



Wade Linear Drainage

Linear Drainage, Channel and Grating Range

- Wide range of standard linear drain channel profiles and grating styles to choose from.
- Hidden channel drain, suited for draining large areas of screed, resin, block paving and other finishes, hidden linear channel drain can be designed to accommodate a range of flooring thickness's and flow rate requirements.
- Hidden channel for threshold drainage - Wade TDN and TDR profiles help protect a building threshold from ingress/ponding of rainwater landing on an external door.
- 'Supaslot' linear channel drain available for large areas with only low volumes of water.
- Dual-level linear drainage channel provides primary drainage at finished floor level plus secondary drainage at membrane level.
- Channel drain and grating for fire-fighting lift available to deal with 25 l/s flow rate in accordance with BS 9999.



Wade Grease Converters

Grease Converters

Wade provides effective and easy to use means of dealing with grease, oil and sediment.

- Actimatic Grease Converters are available to suit a wide range of applications.
- Wade Actimatic in powder or liquid form is a bacterial product formulated to deal with kitchen effluent.
- An Automatic Dosing System is available for use with Actimatic Liquid. The unit automatically doses the Grease Converter with diluted Actimatic Liquid once daily at a time selected by the user.
- Sediment Interceptors are used to help prevent blockages where solids such as food scraps, hair, plaster, sediment etc. are discharged into drain lines.
- Oil Interceptors are installed in drain lines to help prevent the pollution of rivers, streams, drainage systems and water treatment plants.

ALUMASC

RAINWATER™

GUTTERS AND DOWNPIPES

Alumasc Rainwater is the UK market leader of Aluminium, Cast Iron and Steel gutters and downpipes.

From cutting edge-contemporary to traditional heritage, Alumasc's metal rainwater systems outperforms others whatever the weather.

Aluminium



- Cast, Pressed & Extruded systems
- 26 Factory applied colours plus any RAL colour
- Lightweight yet strong
- Low Maintenance
- Durable & Corrosion resistant
- BBA accredited

Cast Iron



- 8 Heritage colours in Apex certified factory painted finish
- Black painted available ex-stock
- Strong, durable & vandal resistant
- Life expectancy in excess of 40 years

Steel



- 7 Polyester pre-coated paint finishes or plain galvanised
- Long lasting and extremely strong
- High Quality
- 15 year warranty
- Pre-Fabricated Outlet

SKYLINE®

FASCIA SOFFIT COPINGS

Skyline Systems

Skyline Fascia Soffit System

Soffits

The Skyline Soffit Plank is a secret fix modular planking system designed to work on overhanging soffits and canopies or as part of a Skyline fascia scheme.



Copings

The Skyline Copping system provides an economical and easily installed capping to upstand parapets, in conjunction with flat or pitched roofs. The strap fixing method avoids penetration of the capping, whilst allowing ventilation over the top of the wall. Skyline Copings are equally suited to retrofit and new build projects.



Fascias

Top of the range roof edge details to suit all designs and budgets. Whether you choose from the standard range or bespoke design, the Skyline Fascia system is manufactured from high quality, polyester powder coated aluminium and is available in four bold generic shapes with bespoke designs available to order.



Cills & Surrounds

As well as the standard range, Skyline Cills and Surrounds can be made to your exact specification. If you can't find the correct colour from our 26 standard colours, we can provide Cills and Surrounds in any RAL colour, so you can ensure an exact match for your project.



**GATIC®****DRAINAGE & ACCESS COVERS**

A global leader of surface water drainage and engineered access covers

Slotdrain



Gatic's Slotdrain hexagonal channel profile was originally developed in conjunction with industry professionals from the airport sector.

The concept has proved infinitely scalable and has been developed into a comprehensive range of products suitable for smaller projects such as landscaping schemes, shopping developments and parking facilities. The current Slotdrain range consists of CastSlot, UltraSlot, PaveSlot and FacadeSlot for total design flexibility, and includes complementary accessories.

Filcoten



Filcoten is an innovative, lightweight concrete channel drainage system that sets new standards in strength, installed performance and environmental benefits. The unique combination of high strength, high durability and geometric stability provides engineers and contractors with a market leading channel drainage solution.



Access Covers

Originally developed to meet the demanding specifications set by Shell in the '20s, our access covers have been subject to continuous development and refinement to meet the ever increasing and diverse demands of travel, industry and commerce.

Today, Gatic offers a broad range of ductile iron, composite and parade machined access covers in a variety of surface finishes and load ratings to cope with the harshest and most punishing of environments.



Kerb

The Lightweight Gatic Kerb Range of products conform to Manual Handling Regulations, cutting out the cost of any mechanical handing equipment. Installation time is exceptionally quick on the whole Gatic Kerb System, as well as reducing the RISK of personal injury. Kerb drain is also a fully recycled material

