

**Rooflights, Skylights,
Roof Lanterns, AOVs
& Suntubes**

Create a better
living space with
natural light

**NEW
BIGGER
RANGE**

more choice, better prices.

2017/18

more choice, better prices.

The UK's Leading Supplier of Rooflights, Skylights and Smoke Vents to the Trade.



The National Domelight Company

The National Domelight Company are specialist suppliers of domelights, rooflights, skylights and smoke vents, to roofing contractors and builders, and to developers of commercial and residential property.

Our family-run company has been successfully trading for over 30 years and our UK-based sales team has more than 50 years of rooflight and skylight knowledge between them. You can trust us to know what we are talking about and to give you the best advice and guidance to find the right rooflight for you and your customers.

Why choose the National Domelight Company?

- **Widest choice**

We are the UK's leading supplier of rooflights for flat roofs and as a result we can supply you with any size, shape and material of rooflight, and with any combination of upstands and accessories that you will ever need – *and all at the best trade prices.*



- **No more waiting**

We deliver a first class service and our large warehouse and stocks mean that you won't have to wait long for your order. We can deliver most stock units, direct to site, within 48 hours. Our FREE nationwide delivery service means your rooflight will be safely delivered direct to site at your convenience – just when you need it.

- **Best quality**

Whether you are looking for a budget polycarbonate dome or a bespoke glass rooflight you will find our prices are competitive yet we still deliver industry leading quality and service in everything we do. Guaranteed.

- **Dedicated support**

We have been supplying the roofing industry for decades and to help you we provide useful resources at www.nationaldomes.com and CAD downloads to incorporate into your digital plans. Just call our **Technical Support Team on 01276 451555.**

Don't just take our word for it – Put us to the test, let us quote your next job and see just how much you could save! We guarantee excellent products, at sensible prices.



Improve your living space and personal wellbeing with more natural light.

Natural light is hugely important in a home. It can make a room feel bigger, more spacious, airier, transforming dark and tired spaces. But even more importantly, it can have a huge effect on our wellbeing and enjoyment of our homes.

Re-energise and improve wellbeing

Improving the natural light in a home is easy with rooflights and skylights. They can let in up to three times more light than a same-sized vertical window to flood a space with natural light and drastically improve the home.

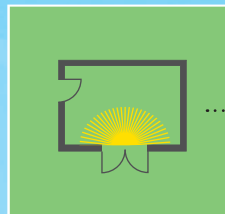
Pointing you in the right direction for greater effect

In the scheme of things, where should a rooflight go? You'll need to think about which way your home and windows face in relation to the sunlight.

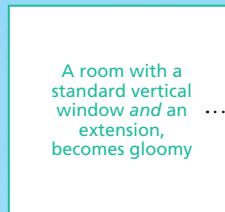


A south-facing window will get the sunlight for most of the day. While a north-facing window will get no direct sunlight but a weaker light all day. A west-facing window will get the sun from early afternoon and an east-facing window will catch the sunrise. Where you position your

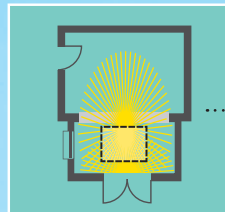
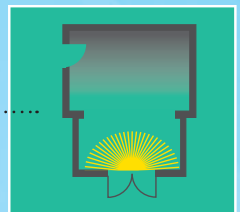
windows will depend on the size of the room and how much light you want to let in.



The amount of natural light in a room with a standard vertical window and without an extension built on



A room with a standard vertical window and an extension, becomes gloomy



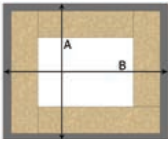
In a room with a standard vertical window, an extension and a rooflight there is no shortage of natural light

People often forget that by extending a room they are moving the vertical windows further away, which can make the space darker. Incorporating a rooflight into the design of your new extension or development will bring daylight right into the heart of the space and make the room feel brighter and more inviting.

Contact the National Domelight Company to discuss a project and find a solution that fits your needs – 01276 451555.

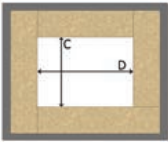
Site Specification and Measuring Guide

1. Rooflight to suit existing kerb



Overall weathered kerb size
A = _____ mm

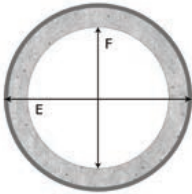
Overall weathered kerb size
B = _____ mm



Internal roof opening size
C = _____ mm

Internal roof opening size
D = _____ mm

2. Circular rooflight measurements for both existing and supplied kerbs



Overall weathered kerb size
E = _____ mm

Internal roof opening size
F = _____ mm*

*Please note only internal roof opening size is required for circular rooflights with a supplied kerb.

3. Kerb Profile



Flat Topped ☐



Angle Topped ☐

*Minimum of 150mm high from the finished roof surface to avoid invalidating roofing guarantees.

4. Rooflight to suit new roof opening



Roof opening size **Length**
= _____ mm

Roof opening size **Width**
= _____ mm

5. Supplied Upstand requirements



Splayed ☐



Vertical ☐



We recommend you use the following guide to help you work out exactly what you need to specify for your project. The National Domelight team will be happy to help you apply the results to a full specification.

GLASS		POLYCARBONATE		VENTILATION OPTIONS	
Glazing Options		Glazing Options			
Double Glazed	<input type="checkbox"/>	Single Skin	<input type="checkbox"/>	Fixed – No Vent	<input type="checkbox"/>
Triple Glazed	<input type="checkbox"/>	Double Skin	<input type="checkbox"/>	Permanent	<input type="checkbox"/>
Walk-On	<input type="checkbox"/>	Triple Skin	<input type="checkbox"/>	Controlled Trickle	<input type="checkbox"/>
Fire-Rated	<input type="checkbox"/>	Quad Skin	<input type="checkbox"/>	Hit & Miss	<input type="checkbox"/>
Other	<input type="checkbox"/>	Other	<input type="checkbox"/>	Rotary	<input type="checkbox"/>
Glazing Finish		Glazing Finish		Manual Hinged	<input type="checkbox"/>
Clear	<input type="checkbox"/>	Clear	<input type="checkbox"/>	Electric Linear Actuator	<input type="checkbox"/>
Sandblasted	<input type="checkbox"/>	Diffused	<input type="checkbox"/>	Electric Chain Actuator	<input type="checkbox"/>
Opaque	<input type="checkbox"/>	Opal	<input type="checkbox"/>	Other	<input type="checkbox"/>
Non-Slip	<input type="checkbox"/>	Bronze	<input type="checkbox"/>	ACCESS HATCH REQUIRED?	
Solar Control	<input type="checkbox"/>	Heat Reflected	<input type="checkbox"/>	Yes	<input type="checkbox"/>
Ritec/Easy Clean	<input type="checkbox"/>	Other	<input type="checkbox"/>	No	<input type="checkbox"/>
Other	<input type="checkbox"/>			Opening Mechanism	
Profile/Shape		Profile/Shape		Manual	<input type="checkbox"/>
Flat	<input type="checkbox"/>	Dome	<input type="checkbox"/>	Electric	<input type="checkbox"/>
Pyramid	<input type="checkbox"/>	Pyramid	<input type="checkbox"/>	AOV/SMOKE VENT REQUIRED?	
Elongated Pyramid	<input type="checkbox"/>	Trapezoid	<input type="checkbox"/>	Yes	<input type="checkbox"/>
Lantern	<input type="checkbox"/>	Northlight	<input type="checkbox"/>	No	<input type="checkbox"/>
Monopitch	<input type="checkbox"/>	Barrel Vault	<input type="checkbox"/>	Opening Angle	
Lean-to	<input type="checkbox"/>	Continuous	<input type="checkbox"/>	140°	<input type="checkbox"/>
Other	<input type="checkbox"/>	Other	<input type="checkbox"/>	160°	<input type="checkbox"/>
EXISTING UPSTAND MATERIAL (If applicable)		SUPPLIED UPSTAND MATERIAL REQUIRED		Free Vent Area	
Please note here.		Timber	<input type="checkbox"/>	1.0m ²	<input type="checkbox"/>
		PVC	<input type="checkbox"/>	1.5m ²	<input type="checkbox"/>
		GRP	<input type="checkbox"/>	Other	<input type="checkbox"/>
		Metal	<input type="checkbox"/>	Control Panel Required?	
		Other	<input type="checkbox"/>	Yes	<input type="checkbox"/>
				No	<input type="checkbox"/>
Notes:					

Stardomes are high quality flat roof polycarbonate domed rooflights designed to make optimum use of natural light. They are perfect for a project where size limitations mean you need a rooflight made to your specific requirements without having to wait long lead times. Stardome offer a huge range of sizes to meet any requirement you may have whether installing above or below the roof insulation. With outstanding thermal qualities they are available as dome only or with a PVC, thermally broken aluminum or GRP upstand offering huge choice and excellent quality.

Features

Material

- Polycarbonate.

Skin

- Single, Double, Triple, Quad & bespoke options.

Glazing finish

- Clear, Opal, Diffused, or Bronze.

Shape

- Square, Rectangular or Circular. Multi-part, Barrel Vaults & Continuous Rooflights.

Profile

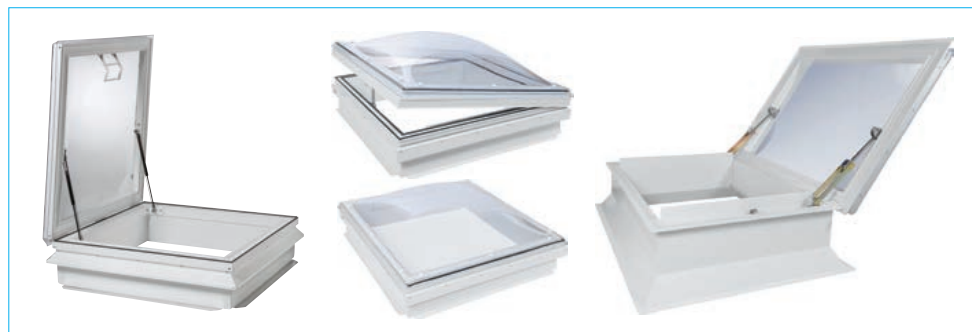
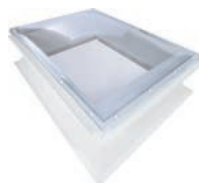
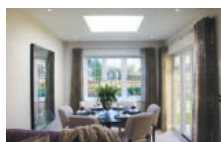
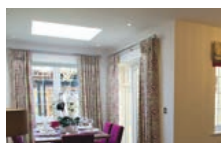
- Domed, Pyramid, Trapezoidal, Circular, Hexagonal.

Size range

- One piece rooflights to order from 400 x 400mm to 1800 x 2400mm. A huge range of bespoke sizes and larger units available to order with industry leading U-Values.

Options

- Large range of Kerb & Ventilation options available in either manual or electric variants. A.O.Vs and Access Hatches also available.



Thermadome polycarbonate rooflights, available in a range of shapes, with a choice of glazing & ventilation options to suit every need. Manufactured to the highest quality, they are the perfect solution for most flat roof applications. With a large range of 40 sizes available from stock for immediate delivery and over 70 non-stock sizes available to order there is bound to be a rooflight to match your requirement.

Features

Material

- Polycarbonate.

Skin

- Single, Double, Triple or Quad.

Glazing finish

- Clear, Opal Diffused, Bronze or 'HeatReflect' (reflects up to 68% of heat radiation).

Shape

- Square, Rectangular, Circular.

Profile

- Domed, Pyramid, Trapezoidal.

Size range

- Ex-Stock: from 500 x 500mm to 1200 x 2400mm. Other sizes available to order.
- Next day delivery available on all of the most popular sizes in the UK.

Options

- Kerb & Ventilation options, A.O.Vs and Access Hatches also available.

**ECO
Kerbs
now
available**



Starglaze are flat double glazed glass rooflights, offering a cost effective solution for those who still want all the benefits of glass while keeping to a budget. Available with splayed and vertical kerbs, and a variety of fixed and hinged ventilation options. The kerb's cellular construction means there is no cold bridging: reducing the risk of condensation whilst ensuring good insulation and low U values. Starglaze is also available as a top only solution for those who wish to fit to their own timber kerb.

Features

Material

- Glass.

Glazing layers

- Double Glazed, Triple Glazed, Walk-On.

Glazing finish

- Clear as standard. Solar Control, Tinted and Sand Blasted Glass as optional.

Shape

- Square, Rectangular, Circular.

Profile

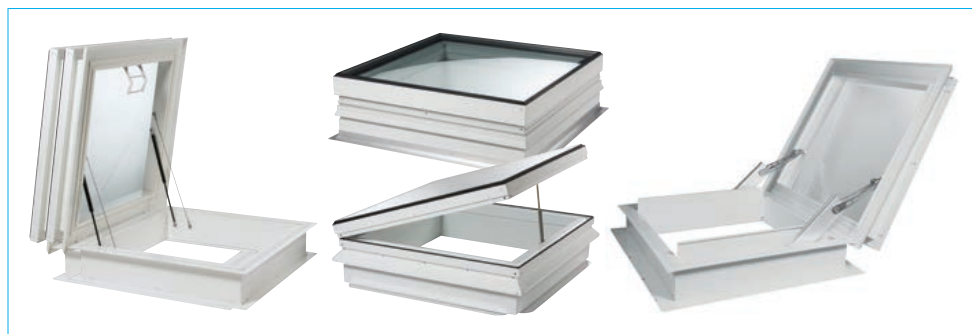
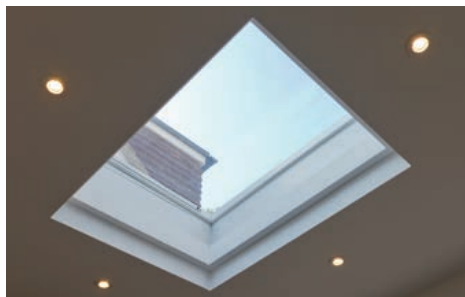
- Flat.

Size range

- To Order: from 600 x 600mm to 2400 x 900mm.
Bespoke units also available.

Options

- Ventilation options, A.O.Vs and Access Hatches also available.



Lunaglaze is a range of standard specification flat glass rooflights, stocked in a wide range of sizes – the ideal solution for next day delivery. The range comprises Lunaglaze ALU, a high quality fully welded aluminium framed unit for a clean minimalistic finish inside and out, as well as the more functional and cost-effective Lunaglaze PVC units. Both are available as 'top-only' to sit over a weathered builder's kerb, or can be supplied with a suitable proprietary upstand and ventilated if required.

Features**Material**

- Glass & PVC frame.
- Glass & Aluminium frame.

Glazing layers

- Double Glazed as standard.

Glazing finish

- Clear as standard.

Shape

- Square or Rectangular. Circular (aluminium) to order.

Profile

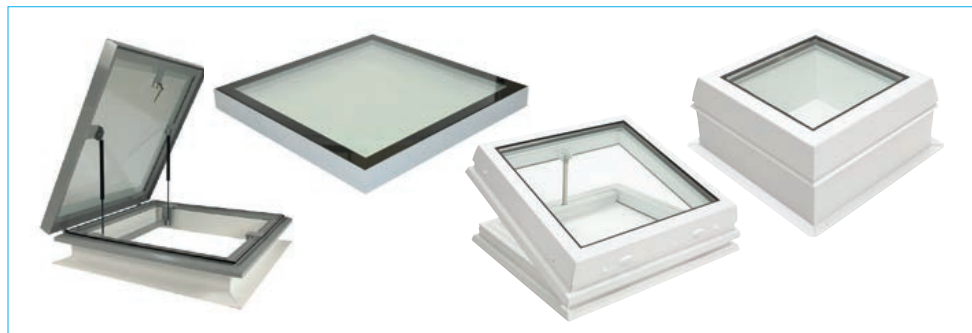
- Flat.

Size range

- To Order: from 600 x 600mm to 1300 x 2300mm overall weathered kerb size.

Options

- Fixed, Hinged (Electric & Manual) & Controlled Trickle Vent.

**NEW
for
2017!**

Solarglaze are high quality, double glazed glass rooflights: A flat glass construction which combines industry leading aesthetics with excellent acoustics and thermal qualities. Insulated kerbs are supplied as standard, and both fixed and electrically hinged variants are currently available in a selection of standard and purpose made sizes. Solarglaze rooflights are perfect for those looking for a complete rooflight solution without having to construct your own kerb.

Features

Material

- Glass.

Glazing layers

- Double Glazed, Triple Glazed, Walk-On.

Glazing finish

- Clear as standard. Solar Control as optional.

Shape

- Square, Rectangular, Circular.

Profile

- Flat.

Size range

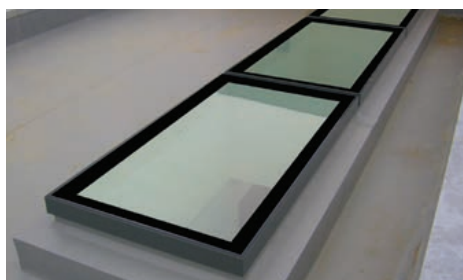
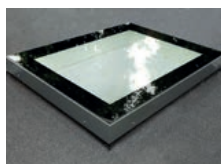
- To Order: from 600 x 600mm and continuous option for unlimited lengths.

Options

- Electric Hinged, Walk-On, Access Hatch, High spec Eco option also available.

NEW TO THE RANGE

- Electric Access now available.
- Fully Integrated electric modular units now available.



Astroglaze are aesthetically designed glass rooflights, with high insulation values and offer simple on-site installation. They are designed to sit over builders timber kerbs and can be made to order to custom sizes in either single piece units or large multi-section units. Standard glazing is supplied clear, with a sandblasted border around the perimeter of the unit. This can be tailored to suit your individual kerb width – creating a smart appearance when viewed from either below or above.

Features

Material

- Glass.

Glazing layers

- Double Glazed, Triple Glazed, Walk-On.

Glazing finish

- Clear as standard.
Solar Control, Tinted and Sand Blasted Glass as optional.

Shape

- Square, Rectangular, Circular and other shapes to order.

Profile

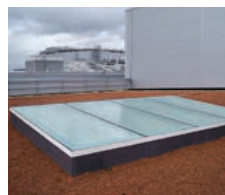
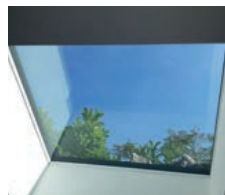
- Flat

Size range

- To Order: from 600 x 600mm. Bespoke sizes available.

Options

- Fixed, Sliding, Hinged (Electric & Manual), Multi-Part, Access Hatches, Walk-On units, Smoke Vents/AOVs. Ventilation options also available.



The UK's Leading Supplier of Rooflights, Skylights

Polycarbonate

Polycarbonate

StarDome

Ideal for all standard and bespoke requirements.

- An unrivalled cost effective option.

Polycarbonate and Glass

COXDOME®

Ideal for specifiers looking for the original rooflight, manufactured since 1954.

- Next day available on all of the most popular UK sizes.

Roof Lanterns

Glass

SkyLantern

Ideal for maximising natural daylight in an extension/orangery.

- Stock sizes for quick delivery and bespoke sizes to order, delivered in kit-form for easy transportation to the roof area for self-assembly.

Glass

Glass

AstroGlaze

Ideal for all domestic and commercial projects.

- Standard and bespoke sizes available with various ventilation and access options.

Glass

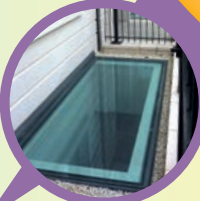
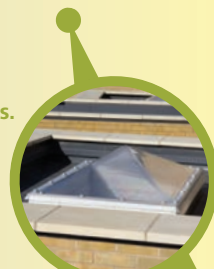
SolarGlaze

Ideal all-in-one rooflight solution with insulated kerb supplied as standard.

- Standard and bespoke sizes available with fixed or electric hinged ventilation offering superb U-Values.

NATIONAL
DOMELIGHTS

more
better



s, Smoke Vents, Roof Lanterns, AOVs & Suntubes.

Polycarbonate

ThermaDome

Ideal for flat roofing projects that require a fast turnaround.

- Next day available on over 40 sizes.



Polycarbonate and Glass

mardome

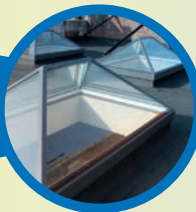
Ideal for projects that require a stylish and contemporary solution.

- Lowest profile dome available with increased clear light size thanks to its unique kerb design.

Polycarbonate

ONAL
T COMPANY

choice,
prices.



Glass

ThermaLight

Ideal for non-obtrusive, modern designs.

- Standard and bespoke sizes available delivered factory assembled for quick installation.

Roof Lanterns



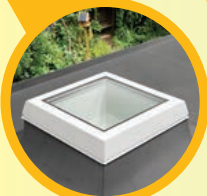
Glass

StarGlaze

Ideal for bespoke and standard glass requirements.

- PVC and Aluminium Kerb/Upstands available for standard or bespoke requirements.

Glass



Glass

LunaGlaze

Ideal for quick delivery glass projects.

- Next day available on all stock sizes.

New

Mardome rooflights are high performance rooflights designed to optimise glazing for maximum light penetration. Available in polycarbonate glazing with an extremely low profile dome to blend discreetly with the roofline and improved insulation properties. Mardome glass rooflights also provide exceptional thermal performance and contemporary styling throughout with the added security thanks to the secret fix security system.

Features

Material

- Polycarbonate and Glass.

Skin

- **Polycarbonate** – Single, Double, Triple or Quad.
- **Glass** – Double Glazed.

Glazing finish

- Clear, Textured, Opal & Bronze.

Shape

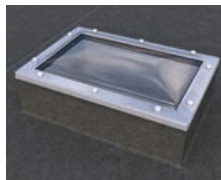
- Square, Rectangular, Circular.

Profile

- Low Profile Dome or Pyramid, Flat.

Size range

- 450 x 450mm – 2400 x 1200mm
- Next day delivery available on all of the most popular sizes in the UK.



Manufactured since 1954, the Coxdome brand is still regarded by many as the 'original' rooflight, and remains the benchmark for design, innovation and performance. Coxdome rooflights provide a wide range of daylight solutions in both polycarbonate & glass – all are quality tested to the highest standards and are extremely good value.

Features

Material

- Polycarbonate and Glass.

Glazing layers

- **Polycarbonate** – Single, Double, Triple or Quad.
- **Glass** – Double Glazed.

Glazing finish

- Clear, Diffused, Opal or Cool & Clear.

Shape

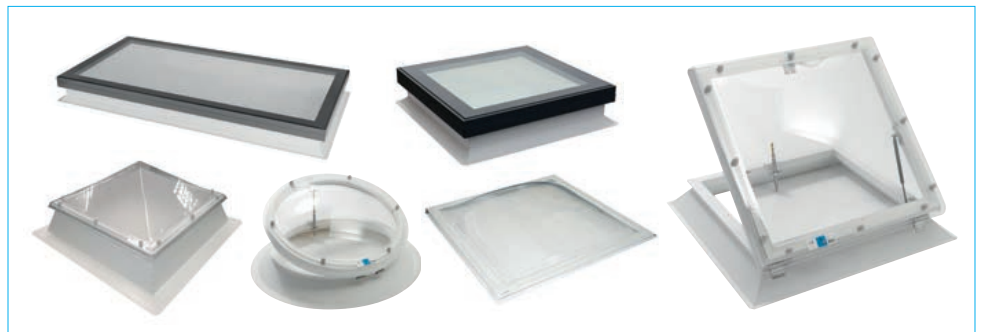
- Square, Rectangular, Circular.

Profile

- Dome or Pyramid, Flat.

Size range

- 600 x 600mm – 2200 x 2200mm
- Next day delivery available on all of the most popular sizes in the UK.



SkyLantern brings more natural light into a home, opening up any living space with style. It will maximise the aerial views from a home extension or orangery – bringing a more even pattern of daylight into the space without compromising on thermal efficiency or style. SkyLantern is beautifully designed to be minimal yet functional. It is super-strong, yet light aluminium box rafters deliver visual elegance and a superior thermal performance. The design of the units ensure sharp lines inside, and low sight lines outside, which means that they look stylish and elegant – from inside or out.

Features

Material

- Glass.

Glazing layers

- Double Glazed, Triple Glazed.

Glazing finish

- Self cleaning glass supplied as standard.

Shape

- Square, Rectangular and bespoke.

Profile

- Pyramid, Trapezoidal, Monopitch Lean-to, Flat.

Size range

- Sizes from 800 x 800mm. Standard and bespoke sizes also available.

Options

- uPVC or Aluminium capping. Sill or gutter detail. Integrated ventilation.



NEW!
Contemporary
design now
available



Thermalight glass rooflights are a premium quality, low profile system that utilises triple sealed, structurally bonded glass, making it ideal for flat roof low pitch applications. The range provides a long term and high quality daylight solution with an architectural style and clean looks. Perfect for those looking for a non-obtrusive modern, minimalistic rooflight design with a quality that surpasses all others.

Features

Material

- Glass.

Glazing layers

- Double Glazed, Triple Glazed, Walk-On & bespoke options.

Glazing finish

- Clear as standard, other options also available.

Shape

- Square or Rectangular, Circular.

Profile

- Flat, Pyramid, Elongated Pyramid.

Size range

- Ex-Stock & To Order:

Flat

Min 300 x 300mm - 1800 x 3000mm.

Pyramid/Lantern

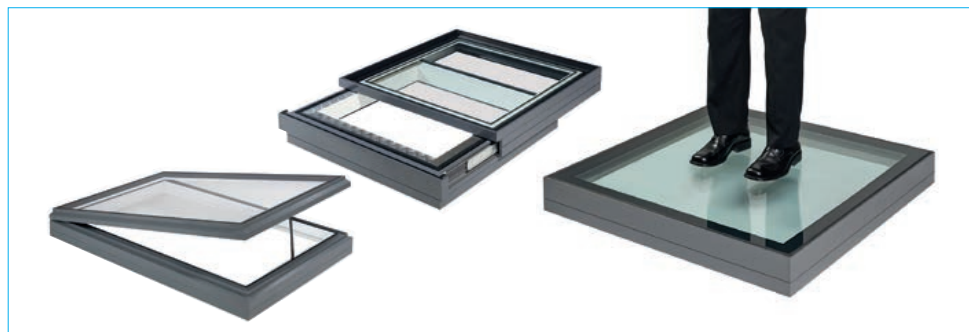
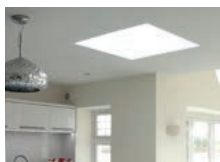
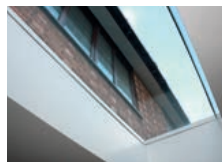
Min 700 x 700mm - 2000 x 5800mm.

Circular

Max span 1200mm dia.

Options

- Fixed, Hinged (Electric & Manual) Walk-On, Sliding & Multi-Part



AOVs/Smoke Vents

A wide range of Automatic Opening Vents (AOVs) and Smoke Vents to suit every need. AOVs are designed to reduce smoke build-up; providing a safer escape route for occupants and access for fire-fighting personnel. Depending on your specification/building regulations, AOVs can be supplied in polycarbonate, glass or with an insulated metal lid, opening to varying degrees of 90°, 140° or 160°. Some AOVs are ideal for day-to-day ventilation: motors can be off-set to enable access for roof maintenance purposes and all AOVs can be supplied with stand-alone controls.

Features

Material

- Polycarbonate, Glass, Insulated Aluminium.

Glazing layers

- Polycarbonate – Double, Triple, Quad skin.
- Glass – Double Glazed, Triple Glazed.
- Aluminium – Insulated.

Glazing finish

- Polycarbonate – Clear, Opal, Diffused, Bronze or 'HeatReflect' (reflects up to 68% of heat radiation).
- Glass – Clear as standard, other options also available.

Shape

- Square or Rectangular.

Profile

- Dome, Pyramid, Trapezoidal or Flat.

Size range

- From 900mm x 900mm.

Options

- Control Panel, Battery Back-Up, Fireman's Switch, Smoke Detector.



Suntubes provide an elegant natural light solution from the roof into any area that is too small to install traditional rooflights, such as a dark hallway, corridor or bathrooms. Essentially it captures daylight at roof level and directs it through reflective internal tubes into the space where it is diffused at ceiling level. Supplied as a kit with the choice of a rigid or flexible tube, Suntubes can be installed with minimal disturbance to roof and ceiling, and will fit most types of flat and pitched roof.

Features

Kit

- Square low profile flat glass roof unit.
- Flexible tube: (up to 3m), or Rigid tube: (up to 1m).
- Easy-fit magnetic, double-glazed ceiling diffuser with ventilation facility.

Type of Tubing

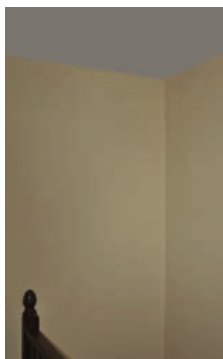
- Flexible: Provides up to 14 times more light (1500 lx) than a 100W bulb.
- Rigid: Provides up to 20 times more light (2200 lx) than a 100W bulb.

Nominal Size (mm Ø) vs Room Size

- 350 – Flexible: 2 x 2m, Rigid: 3 x 3m.
- 450 – Flexible: 3.5 x 3.5m, Rigid: 4.5 x 4.5m.
- 550 – Flexible: 5 x 5m, Rigid: 6 x 6m.

Options

- Available with trickle ventilation which can help improve Building Regulation compliance.



Before installation



After installation

The Range

more choice, better prices.

The National Domelight Company have an extensive range of rooflights and skylights available, with a vast array of options. Whatever your requirement, we are sure to have a rooflight or skylight to meet your needs. You may find it useful to use our brand matrix to find out which brands offer the type of unit you require for your specific project.



Polycarbonate

Polycarbonate is hard, durable and versatile plastic commonly used in rooflight products. It offers the advantages of being a Class B 'Non Fragile' material and is capable of achieving low U-Values when specified in triple of Quad glazed options. Polycarbonate can also be supplied in diffused finishes for privacy and a range of shape options such as dome, pyramid and trapezoid.

 **ThermaDome**

 **StarDome**

 **StarGlaze**

 **AstroGlaze**

 **SolarGlaze**

 **ThermaLight**

 **SkyLantern**

 **LunaGlaze**

 **mardome**

 **COX DOME**

Rooflight brand

Availability

Rooflight type

Polycarbonate
Domes

Glass Top

AOVs

Access Hatches

Walk-On (Glass)

Roof Lantern

Suntube



“ You can trust us to know what we are talking about and to give you the best advice and guidance to find the right rooflight for you and your customers. ”

*Scott Couldrey – Managing Director,
National Domelight Company*

Glass

Flat Glass

Glass is becoming a more and more popular material for use in rooflights due to its clean lines and aesthetic looks. Flat glass rooflights are perfect for use in areas where a low profile rooflight solution is required or you are looking for no light obstructions due to joins or framework. A framework of a one piece glass rooflight sits over your kerb meaning all you see from below is a flat glazed surface.

Roof Lanterns

For those who want more of a feature rooflight, a Roof Lantern is the perfect choice. They are available in a huge range of sizes and colours with a large array of options that can be tailored to perfectly compliment your property. With a minimalistic framework design you can maximise daylight whilst still achieving a modern and contemporary look.

Rooflight material									
Polycarbonate		Glass						Polycarbonate/Glass	
Thermadome	Stardome	Starglaze	Astroglaze	Solarglaze	Thermalight	Skylantern	Lunaglaze	Mardome	Coxdome
Ex-stock and to order	Ex-stock and to order	Ex-stock and to order	Ex-stock and to order	To order	Ex-stock and to order	Ex-stock and to order	Ex-stock	Ex-stock and to order	Ex-stock and to order
●	●							●	●
		●	●	●	●	●	●	●	●
●	●	●	●						●
●	●	●	●	●				●	●
		●	●	●	●				
●		●	●		●	●			●
●							●		●



Contemporary Garage Conversion

“NDC offer a good range which meant I could offer the customer real choice with excellent options to fit the brief. Their customer service was exceptional.”
Nathan Hawkins – Building Contractor

The project

A contemporary garage conversion adjacent to a circa 1970 detached bungalow in Camberley, Surrey – comprising a stylish double bedroom and en suite.

The requirements

The Building Contractor, Nathan Hawkins, was assigned responsibility for sourcing and offering his client choices for specific building materials and fixtures and fittings – including natural light source options. Achieving a quality look and feel within a moderate budget was key. The budget dictated that the height of the ceilings could not be raised to ‘normal’ room height and most importantly the layout of the property meant that fitting windows in the conversion was not feasible therefore rooflights were the logical solution.

The solution

The builder selected NDC as the preferred supplier based on several factors including; great customer service, comprehensive product range, high quality standards and tried and tested reliability. Plus all the company's units clearly adhered to the necessary and vitally important building regulations.

Glass skylights were specified because the roof of the garage conversion would be clearly visible and therefore it was important that the skylights were visually appealing. Using NDC's brand matrix Nathan was able to identify the best type of unit specifically for this project. The client was offered a couple of alternatives and it was decided to fit ‘StarGlaze’, which offers a cost effective solution with all the benefits of glass. Glass is a popular material for use in rooflights due to its clean lines and aesthetic looks. Flat glass rooflights are perfect for use in areas where a low profile rooflight solution is required.

The size of the units for each of the rooms was carefully considered to ensure they didn't overpower the room but allowed maximum light. A StarGlaze double glazed glass rooflights 600 x 1200mm was fitted in the 2.5 x 4m bedroom and 475 x 700mm rooflight in the 1.5 x 2 en suite. Hit & Miss Ventilation and MK2 vertical PVC upstands were specified and in the bedroom a manual hinged ventilation was included with a winding rod. The construction of the units means there is no cold bridging so the risk of condensation is reduced and good insulation is ensured.

The conclusion

High quality additional light and airy accommodation has been created within the existing footprint of the home. Low ceilings and no windows were a non-issue thanks to NDC's StarGlaze units flooding both of the new rooms with daylight. Consistent quality, fast delivery on request and competitive pricing all came as standard.

Building Contractor Nathan Hawkins says: “NDC offer a good range which meant I could offer the customer real choice with excellent options to fit the brief. Their customer service was exceptional. I received one to one advice on the specific needs of this job including comprehensive installation diagrams and lots of tips on best way and what to do.”



Actual products supplied:

- 1 x StarGlaze double-glazed glass rooflights with Hit & Miss Ventilation and MK2 vertical PVC upstand to suit a roof opening size of 475 x 700mm
- 1 x StarGlaze double-glazed glass rooflights with Hit & Miss Ventilation and Manual Hinged ventilation with portable winding rod on a MK2 vertical PVC upstand to suit a roof opening size of 600 x 1200mm

Please contact National Domelight Company for further information – 01276 451555.

**Pyramid House
52 Guildford Road
Lightwater
Surrey
GU18 5SD**

Tel: 01276 451555
Email: info@nationaldomes.com
www.nationaldomes.com



► **Visit our website to watch
our product videos.**



Important notes:

The responsibility for determining that any building component complies with the relevant Building Regulations rests solely with the client or specifier.

The National Domelight Company policy is one of continuous product improvement; accordingly we reserve the right to alter specifications without notice at any time.

