



**3** Colours



**1** Finish



**3** Sizes

JOHNSON • TILES

Select Collection

## Street

Glazed Porcelain  
Wall and Floor Tiles

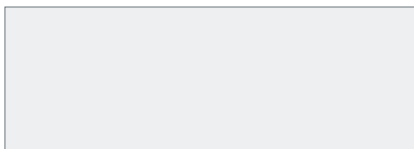


---

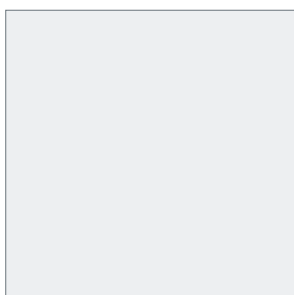
**Street** is available in **three sizes**, perfectly designed for easy installation.

---

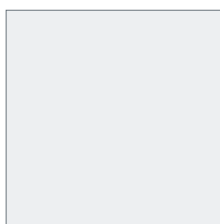
**Size**



850 x 300mm



600 x 600mm



450 x 450mm

---

**Thickness**

450 x 450mm tiles in this range are 9mm thick. All other tiles are 10mm thick.

---

## One finish

Example below is not to scale but has been enlarged to show detail:



---

**Matt**



---

**Three colours** offering a neutral and contemporary palette.



**Vapour**

**PEI IV**

---

**Vapour**

**Size**

**Finish**

Matt

450 x 450mm

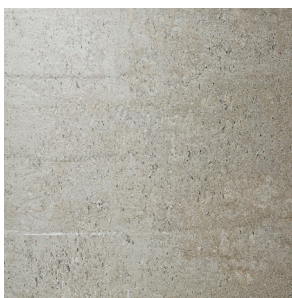
STRT1N

600 x 600mm

STRT1N

850 x 300mm

STRT1N



**Pewter**

**PEI II**

---

**Pewter**

**Size**

**Finish**

Matt

450 x 450mm

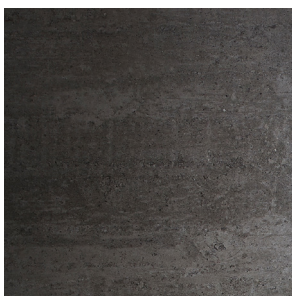
STRT2N

600 x 600mm

STRT2N

850 x 300mm

STRT2N



**Iron**

**PEI II**

---

**Iron**

**Size**

**Finish**

Matt

450 x 450mm

STRT3N

600 x 600mm

STRT3N

850 x 300mm

STRT3N

---

**Street** is a modern concrete effect tile. Mix the tonal colours of **Street** to create zoned areas within a space.

For more details on suitability, or advice on any technical issues, please contact our technical helpline below.

---

## Specification

### Size - All sizes

| Wall                  | Floor    | Wet barefoot | Material         | Finish |
|-----------------------|----------|--------------|------------------|--------|
| Internal and external | Internal | -            | Glazed Porcelain | Matt   |

### Floor values

| Colour            | Pendulum 4S         | R value | Shade variation | Wet ramp | Traffic    |
|-------------------|---------------------|---------|-----------------|----------|------------|
| Vapour            | Dry 36+ Wet 25 - 35 | R9      | VI              | -        | Commercial |
| All other colours | Dry 36+ Wet 25 - 35 | R9      | VI              | -        | Domestic   |

Due to the manufacturing process of all floor tiles there may be small variations in slip resistance. Given this, we suggest you refer to our website or call our technical helpline for the most up-to-date information.

---

## Colour notations

| Code   | Colour | NCS       | LRV |
|--------|--------|-----------|-----|
| STRT3N | Iron   | 6005-Y80R | 18  |
| STRT2N | Pewter | 4502-Y    | 29  |
| STRT1N | Vapour | 2002-Y50R | 55  |

**Note:** These results are from Johnson Tiles' internal test reports and are to be used for guidance only. LRV: Light Reflectance Value (Reflectance Y).

Front cover image: **Street Iron**

---

## Samples

Tel: +44 (0) 1782 524043

Fax: +44 (0) 1782 577379

Email: [samples@johnson-tiles.com](mailto:samples@johnson-tiles.com)



---

## Technical helpline

Tel: +44 (0) 1782 524111

Fax: +44 (0) 1782 577379

Email: [techadvice@johnson-tiles.com](mailto:techadvice@johnson-tiles.com)

---

**[www.johnson-tiles.com](http://www.johnson-tiles.com)**

© 2016 Johnson Tiles.  
All rights reserved.

Printed in England.