

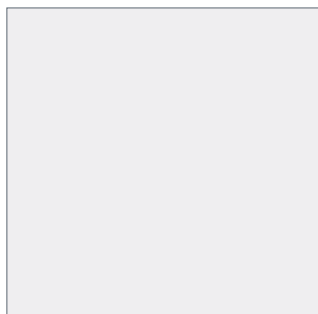
Hudson

Glazed Ceramic and Porcelain
Wall and Floor Tiles

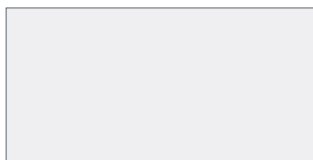


 **Hudson** is available in **two sizes**, perfectly designed for seamless installation.

Sizes



600 x 600mm



600 x 300mm

Thickness

600 x 600mm = 10.5mm
600 x 300mm = 10mm

N.B

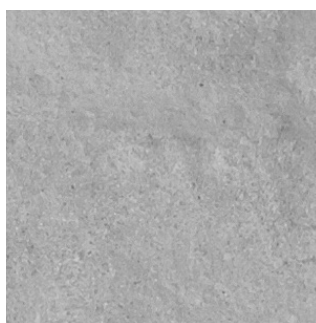
600 x 600mm products in this range are Glazed Porcelain (Bla). 600 x 300mm products are Glazed Ceramic (BIII).

 **Three finishes**, combining both form and function.

Examples below are not to scale but have been enlarged to show detail:



Natural



Rockfall



Sandbar

Four colours, offering a neutral and contemporary palette.

For the most up-to-date availability information, please visit our website.



Albany White

PEI IV

Albany White

Sizes	Finishes		
	Natural	Rockfall	Sandbar
600 x 300mm	-	HUDS1R	HUDS1S
600 x 600mm	HUDS1N	-	-



New Jersey

PEI IV

New Jersey

Sizes	Finishes		
	Natural	Rockfall	Sandbar
600 x 300mm	-	HUDS2R	HUDS2S
600 x 600mm	HUDS2N	-	-



Manhattan

PEI IV

Manhattan

Sizes	Finishes		
	Natural	Rockfall	Sandbar
600 x 300mm	-	HUDS3R	HUDS3S
600 x 600mm	HUDS3N	-	-



Brooklyn

PEI II

Brooklyn

Sizes	Finishes		
	Natural	Rockfall	Sandbar
600 x 600mm	HUDS4N	-	-

Hudson, offering a simple neutral colour palette, large format sizes and clever surface effects allowing for the creation of truly stunning lay patterns.

For more details on suitability, or advice on any technical issues, please contact our technical helpline below.

Specification

Size - 600 x 300mm

Wall	Floor	Wet Barefoot	Material	Finish
Internal	-	-	Glazed Ceramic (BIII)	Various

Size - 600 x 600mm

Wall	Floor	Wet Barefoot	Material	Finish
Internal and External	Internal	-	Glazed Porcelain (Bla)	Natural

Floor Values - Natural

Colour	Pendulum 4S	R Value	Shade Variation	Wet Ramp	Traffic
Brooklyn	Dry 36+ Wet 36+	R10	V2	-	Light Commercial
All Other Colours	Dry 36+ Wet 36+	R10	V2	-	Commercial

Due to the manufacturing process of all floor tiles there may be small variations in slip resistance. Given this, we suggest you refer to our website or call our technical helpline for the most up-to-date information.

Colour Notations

Colour	Code	NCS	LRV
Albany White	HUDS1	2002-Y	56
Brooklyn	HUDS4	6500-N	16
Manhattan	HUDS3	3502-Y	38
New Jersey	HUDS2	2005-Y40R	54

Note: These results are from Johnson Tiles' internal test reports and are to be used for guidance only. LRV: Light Reflectance Value (Reflectance Y).



Front Cover Image 1: **Hudson Manhattan Rockfall and Sandbar 600 x 300mm with Brooklyn Natural 600 x 600mm**

Front Cover Image 2: **Hudson Albany White Rockfall and New Jersey Sandbar 600 x 300mm**

Front Cover Image 3: **Hudson Albany White, New Jersey and Manhattan Rockfall and Sandbar**

N.B - Front Cover Image 1 features Mode Coal Bush Hammered 600 x 600mm in the shower area.

Samples

Tel: +44 (0)1782 524043
Fax: +44 (0)1782 577379
Email: samples@johnson-tiles.com

Technical Helpline

Tel: +44 (0)1782 524111
Fax: +44 (0)1782 577379
Email: techadvice@johnson-tiles.com

