

MRT1  
THERMOSTAT

MRT1 is a wall mounted, temperature activated on/off switch. The desired temperature is set on the rotary control dial. The thermostat monitors and compares the actual room temperature with the set temperature on the control. If the room temperature is below the desired level and the thermostat has requested heat the central heating system will run the heating circuit until the temperature reaches the required level, the MRT1 will switch off the heating circuit.



MRT1BRAILLE

- 2** **GUARANTEE**  
2 year guarantee from date of purchase against manufacturing defects.
- IP** **IP RATING**  
IP20.
- DELIVERY**  
2 - 5 working days.

For more general information, please see page 276.

Description	Order Code	Minimum Order Qty
Room Thermostat	MRT1	1
Room Thermostat (Braille Version)	MRT1BRAILLE	1

PRODUCT SUMMARY

- Gas bellow with anticipator for better reaction times to temperature change
- Simple and accurate
- Lockable or high/low temperature restrict feature
- Operating range 6 to 30°C
- Switching differential 1.3°C
- Large terminal screws
- Braille version also available

MRTE  
THERMOSTAT

MRTE is a wall mounted slimline electronic thermostat for users that require greater accuracy of temperature control. It has a clear, accurate LCD display and limits the maximum and minimum temperature, working as either a heating control or a cooling control. It is battery powered which makes this thermostat ideal for upgrading an old two-wire (no neutral wire) thermostat and has volt free contacts for use with various types of system.



- 2** **GUARANTEE**  
2 year guarantee from date of purchase against manufacturing defects.
- IP** **IP RATING**  
IP20.
- DELIVERY**  
2 - 5 working days.

For more general information, please see page 276.

Description	Order Code	Minimum Order Qty
Electronic Room Thermostat	MRTE	1

# MCT1 THERMOSTAT

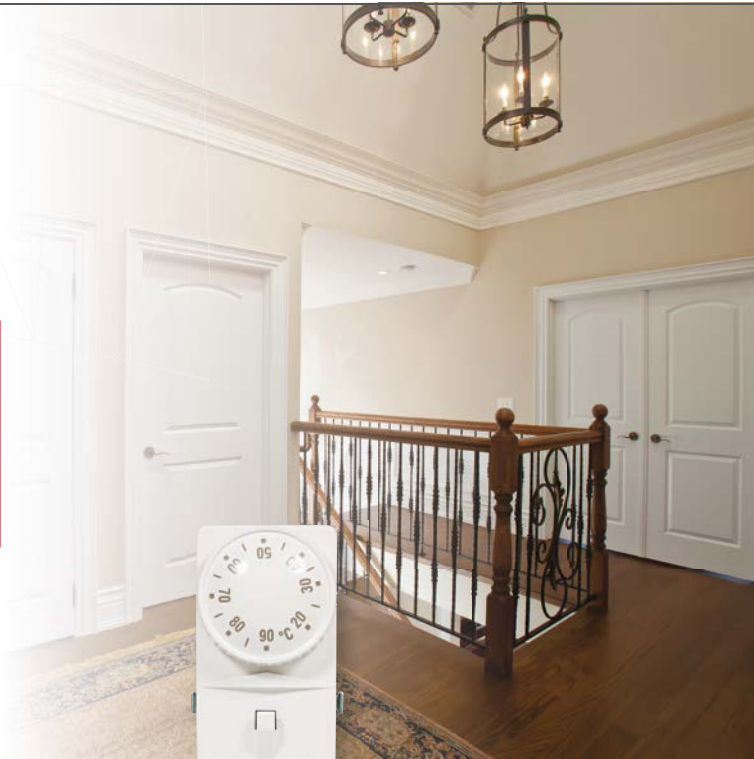
The MCT1 cylinder thermostat is designed to complement the MRT1. It is used for monitoring and controlling the temperature of the hot water stored within the hot water cylinder. When used with a thermostatic control for the heating circuit it will give boiler interlock providing a safety feature. It can also be used as a pipe thermostat in conjunction with a frost thermostat to ensure a boiler does not run uncontrolled during cold weather.



- 2** **GUARANTEE**  
2 year guarantee from date of purchase against manufacturing defects.
- IP** **RATING**  
IP20.
- DELIVERY**  
2 - 5 working days.

For more general information, please see page 276.

Description	Order Code	Minimum Order Qty
Cylinder Thermostat	MCT1	1



MCT1

## PRODUCT SUMMARY

- Maximum mounting temperature 100°C
- Operating range 10 to 90°C
- Switching differential 5 to 10°C
- Large terminal screws, for easy connection



MPRT

## PRODUCT SUMMARY

- Uses Smart Start technology
- 24 hour or 7 day programming
- 3 temperature settings - comfort, economy (set back) and frost
- 4 programmes (3 preset, 1 adjustable) with manual override
- Clear, accurate LCD display
- Compatible with MYSON FLOORTEC underfloor heating systems and connects to a 24V hard wired wiring centre. One thermostat can control several loops
- Also available in chrome and black

Description	Order Code	Minimum Order Qty
Programmable Room Thermostat	MPRT	1
Programmable Room Thermostat, Chrome Fascia	MPRTCR	1
Programmable Room Thermostat, Black Fascia	MPRTBL	1
Programmable Room Thermostat, Mains Supply	MPRTMS	1
Wireless Programmable Room Thermostat and Receiver	MPRTRF	1
Wireless Programmable Room Thermostat and Receiver, Chrome Fascia	MPRTRFCR	1
Wireless Programmable Room Thermostat and Receiver, Black Fascia	MPRTRFBL	1
RF Relay for use with the MPRTRF	RELAY433	1

# MPRT PROGRAMMABLE ROOM THERMOSTAT

MPRT is an easy to use programmable room thermostat. It utilises Smart Start technology which can give the user considerable savings on heating bills by varying start-up times. The Smart Start system is continually learning the temperature rise requirement, delaying the startup of the system, therefore saving energy during milder weather. A radio frequency version is also available.



- 2** **GUARANTEE**  
2 year guarantee from date of purchase against manufacturing defects.
- IP** **RATING**  
IP30.
- DELIVERY**  
2 - 5 working days.
- BOILER PLUS COMPLIANT**

For more general information, please see page 276.



# TOUCH

PROGRAMMABLE ROOM THERMOSTAT

The MYSON TOUCH range of touch screen programmable thermostats allow you to set different room temperatures for the morning, day, evening and night time. The Smart Start function will save both energy and money by delaying the heating start up time when the weather is warmer.

The range includes the MYSON TOUCH and MYSON TOUCH RS, which comes with a remote sensor. The TOUCH RS is primarily designed for underfloor systems which senses floor temperature.



- 2** **GUARANTEE**  
2 year guarantee from date of purchase against manufacturing defects.
- IP** **RATING**  
IP20.
- DELIVERY**  
2 - 5 working days.

For more general information, please see page 276.

Description	Order Code	Minimum Order Qty
TOUCH Screen Programmable Room Thermostat	TOUCH	1
TOUCH Screen Programmable Room Thermostat with Remote Sensor	TOUCHRS	1



## PRODUCT SUMMARY

- Smart Start technology
- Clear, easy to use touch screen display
- 24 hour programming, 5/2 day programming or 7 day programming
- Up to 4 time and temperature settings per day
- 230V supply
- MYSON TOUCH is suitable to be classified as a "Delayed Start" thermostat as defined in SAP 2005
- MYSON TOUCH RS, primarily designed for underfloor systems, includes a remote sensor which senses either floor or room temperature or a combination of both
- Load Compensation technology (saves fuel by delaying heating 'start-up' on warm days)
- 2 zone programmable room thermostat

## PRODUCT SUMMARY

- Apple HomeKit enabled
- Geo Location
- Smart Start technology
- Thimble air and floor sensor options
- 24 hour, 5/2 day or 7 day programming
- Up to 4 time and temperature period settings per day
- Can be set for time only (to control hot water cylinder)
- Temperature over-ride, temperature hold and holiday functions
- Lockable, with PIN code
- View live temperature from your home on your smart phone via the MYSON TOUCH2 app
- Uses mesh communication for multi-zone control
- Compact size - 85mm x 85mm x 15mm and requires a minimum electrical box depth of 25mm
- Hub can control up to 32 thermostats
- 1 zone programmable room thermostat

Description	Order Code	Minimum Order Qty
TOUCH2 WiFi Touch Pad Programmable Room Thermostat for 'Smart Phone' Control & Control Hub	T2AHWIFI	1
TOUCH2 WiFi Touch Pad Programmable Room Thermostat for 'Smart Phone' Control	T2WIFI	1
TOUCH2 WiFi Hub Only	T2HUB	1
WiFi Air Sensor including Thimble Cover (2 metre cable)	TAIRSEN	1
WiFi Floor Sensor (3 metre cable)	TFLRSEN	1

# TOUCH2 WiFi

PROGRAMMABLE ROOM THERMOSTAT

TOUCH2 WiFi is the second generation WiFi thermostat from MYSON and allows you to control your heating from anywhere in the world. It is easy to set up and configure on your smart phone or tablet and is controlled using the TOUCH2 app. The Smart Start function will save both energy and money by delaying the heating start up time when the weather is warmer. The Geo Location feature will support multi-user smart phone to deactivate and reactivate when leaving and returning home.



- 2** **GUARANTEE**  
2 year guarantee from date of purchase against manufacturing defects.
- IP** **RATING**  
IP20.
- DELIVERY**  
2 - 5 working days.
- BOILER PLUS COMPLIANT**  
When connected to TOUCH2 Hub.

For more general information, please see page 276.

ELECTRONIC  
CONTROLS

ELECTRONIC  
CONTROLS

# MEP1C, MEP2C & MEP3C PROGRAMMERS

The MEP1c, MEP2c and MEP3c are single, dual and triple channel programmers offering energy efficient control of your heating system.

MEP1c is a single channel programmer for use with combi boilers, as a domestic hot water control or with electric radiators when using a programmable thermostat for the central heating circuit. MEP2c is a dual channel programmer for use within a central heating system to control two circuits. MEP3c is a three channel programmer, designed for installations where there is a need for two heating zones and a hot water circuit.

They are the first choice with service engineers due to their compliance with the industry standard back plate and the unique front fixing arrangement.



MEP3C



MEP1C



MEP2C

## PRODUCT SUMMARY

- Easy to use
- Can be set for 24hr, 5/2 day or 7 day operation
- Easy to read, backlit screen
- Pre-set clock
- Automatic summer/winter time change
- Memory saver - programmer and clock will not require resetting in the event of power loss
- Advanced and extend features for even more control

- 2** **GUARANTEE**  
2 year guarantee from date of purchase against manufacturing defects.
- IP** **IP RATING**  
IP20.
- DELIVERY**  
2 - 5 working days.

For more general information, please see page 276.

Description	Order Code	Minimum Order Qty
Single Channel Programmer	MEP1C	1
Dual Channel Programmer	MEP2C	1
Three Channel Programmer	MEP3C	1

# TOUCH4 PROGRAMMER

The MYSON TOUCH4 is a 4 zone programmer, designed to work perfectly with our electric radiator ranges (FINESSE, RIO, DÉCOR & COLUMN). The TOUCH4 is unique with its precision touch screen interface and easy to use functions.

## PRODUCT SUMMARY

- For use with our electric radiators only
- Up to 4 zones
- Each zone can be set to work in 5/2 or 7 day mode
- 4 switching times per day
- Holiday facility
- Boost facility
- Copy facility
- Mode select (Auto, Constant, Off)

- 2** **GUARANTEE**  
2 year guarantee from date of purchase against manufacturing defects.
- IP** **IP RATING**  
IP20.
- DELIVERY**  
2 - 5 working days.

For more general information, please see page 276.

Description	Order Code	Minimum Order Qty
Touch Screen 4 Zone Programmer	TOUCH4	1