



JOHN NEWTON

SYSTEM 800 - DAMP PROOFING



Protecting what matters

Newton Damp Proofing Membranes

Newton System 800

Damp Proofing

Newton System 800

Damp proofing

Quick, clean and proven to work, Newton damp proof membranes offer permanent and cost effective damp proofing solutions.

Damp proofing overview

Newton System 800 is a range of BBA approved damp proof membranes and ancillaries which are quick and clean to install and offer a permanent solution for damp proofing walls. Newton 805 Newlath and Newton 803 Newtonite meshed membranes provide a firm key and impermeable barrier on any damp or deteriorating surface ready for plaster, render or dot and dab plasterboard. The un-meshed Newton 803 is used where insulation requirements dictate the use of a timber or steel frame ready for plasterboard. Newton damp proof membranes are the ideal solution for listed buildings as they are deemed 'reversible'.

Why Newtons?

- Ideal for listed buildings as Newton damp proof membranes are reversible
- Permanently treats walls affected by penetrating and rising damp
- Over 2 million metres of Newton 805 Newlath have been used nationally
- Used in buildings such as Windsor Castle, London Underground stations, Houses of Parliament, Royal Courts of Justice and St George's Hall Liverpool
- 30 year product warranty
- Insurance backed guarantees available when installed by our nationwide Newton registered installers
- Ideal for damp proofing all existing building fabrics and new build timber framed housing
- BBA certified



Newton damp proof membranes installed to the walls of St George's Hall, Liverpool, to fit the contours of the structure. The damp proof membrane acts as a permanent barrier and allows the damp walls to dry out

John Newton company history

1848 established in London

Specialist supplier of plasterer's hair and ancillary products for the construction industry

Company timeline



John Newton
circa 1848

1932

Designed and produced the first physical damp proof membrane 'Newtonite' for internal and external damp proof applications throughout the UK

1940-1945

Business put on hold during the World War II

1945-1983

Newtons damp proof membrane business flourished as UK housing stock was upgraded to habitable accommodation with Newtonite. During this period over 5 million metres of Newton membrane sold

Damp Proof Membranes and Ancillaries

The proven solution to damp problems

'As a homeowner I would strongly recommend that anyone thinking of waterproofing or damp proofing their property look no further than Newtons – their products are excellent and this is coupled with first class service' G Palazzo, london

Damp proofing system

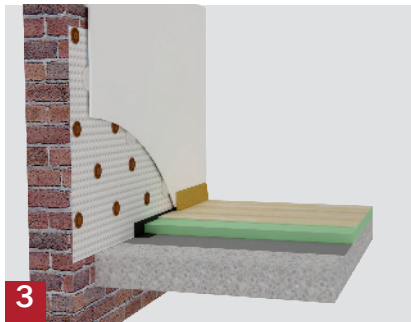
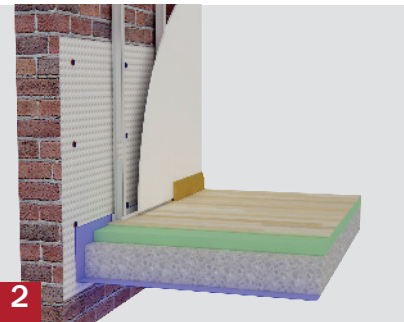
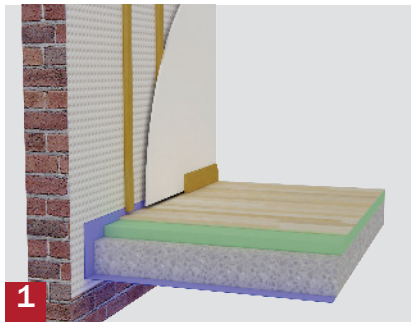
Newton damp proof membranes are ideal for accommodating a number of finishes, as illustrated in the following drawings:

1 Newton 803
with battens

2 Newton 803
with metal frame

3 Newton 805 Newlath/803 Newtonite
with dot and dab

4 Newton 805 Newlath/803 Newtonite
with plaster/lime plaster/render



1984

Current Chairman Christopher Newton invented Newlath – HDPE dimpled sheet membrane with heat welded nylon mesh

1986-2009

Newton develop Newton System 500 full basement waterproofing system. For above ground damp, Newlath continues to be the industry leading damp proof membrane with over 2 million metres installed in the UK

Today

Newtons product range continues to grow to encompass products to deal with all aspects of commercial and domestic structural waterproofing, damp proofing and packaged sump and pump stations



Newton damp proof membranes have a pattern of raised studs which create air channels to enable the damp wall to dry out

Windsor Castle

Treating rising and penetrating damp

Newton damp proof membranes can be sympathetically applied with little or no preparation to the wall surface required, thus maintaining the structural and aesthetic integrity of the building. This makes them the ideal solution for historic and listed buildings.



Data file	Project description
<p>Overview</p> <p>Sector Heritage refurbishment</p> <p>Client The Crown Estate</p> <p>Products used</p> <ul style="list-style-type: none">• Newton 803 Newtonite membrane• Newton 805 Newlath membrane• Newton 800 Mesh Plug• Newton Mesh Tape <p>Key project factors</p> <ul style="list-style-type: none">• Listed historic building• Reversible product• Conforms to conservation requirements	<p>Windsor Castle is the largest and oldest occupied castle in the world, and the original castle was built in around 1080. Recently, Windsor Castle had many problems with rising and penetrating damp. Newton 805 Newlath and Newton 803 Newtonite were used as they provided the ideal solution to the problem as Newton damp proof membranes are deemed ‘reversible’ so can be used in Historic and Listed buildings where there are strict regulations.</p> <p>With a building this size and this old, there was no question of damp proof provision being incorporated into the original building, so the dampness had become severe. Newtonite was used for remedial work at Windsor Castle in the 1950’s and Newlath has been used in many parts of the lower regions of the castle over recent years.</p>



For technical information and product data sheets please visit our website: www.newton-membranes.co.uk

Sutherland Grove

Treating aggressive penetrating damp

Newton damp proofing products are ideal for new-build and refurbishment projects. Newtons technical team can help with all aspects of damp proofing and waterproofing. Call 01732 360 095 to be put through to one of our experts.



Data file	Project description
<p>Overview</p> <p>Sector Residential refurbishment</p> <p>Client Berkeley Homes</p> <p>Products used</p> <ul style="list-style-type: none">• Newton 805 Newlath membrane• Newton 800 Mesh Plug• Newton Mesh Tape• Newton Mastic <p>Key project factors</p> <ul style="list-style-type: none">• Luxury apartment development• Penetrating damp made building uninhabitable• Newton 805 Newlath forms a permanent damp proofing barrier• Quick application• Protection from further moisture penetration	<p>Newton 805 Newlath was the recommended solution for treating penetration damp in this property. The project entailed renovating an existing Grade II Listed three-storey school building into luxury apartments. The single skin brick building had been derelict with defective pointing and as a consequence had lateral penetration of moisture across all elevations rendering it uninhabitable. The building suffered from penetrating damp to the external brickwork on three levels. As a Listed Building, the façade could not be touched and a sympathetic and ‘reversible’ solution needed to be implemented. Newton 805 Newlath was specified as the most effective method of damp proofing, and it was quick to apply, making it the ideal permanent damp proofing solution.</p>



For technical information and product data sheets please visit our website: www.newton-membranes.co.uk

Fixtures and Fittings

Total protection in five easy steps

Newton System 800 damp proof membranes are quick and easy to install and can be finished with a variety of wall coverings. Please refer to the product data sheets and installation sheets for guidance on fixing the membranes and the wall finishes.

Fitting of System 800 Damp Proof Membranes



1 Cut the membrane to size



2 Place the membrane to the wall



3 Neatly fold around corners



4 Drill and then fix with the fixing plug



5 Apply wall finish



Full range of ancillary products available

Newton Waterproofing Systems

Complete damp proofing and waterproofing solutions

System 100 Cementitious Products

Newton System 100 is a comprehensive portfolio of cementitious products which have been introduced into our structural waterproofing range to complement and complete our basement waterproofing designs in areas where the Newton System 500 would not be suitable. Such details include – lift shafts, flat soffits and externally to retained slabs and ring beams.

System 200 Deck and Roofing

A complete range of externally applied elastomeric high performance liquid membranes and ancillaries for balconies, terraces, flat and inverted roofs, podium decks, car parks and reservoirs. This new portfolio of seamless and robust liquid membranes gives specifiers and specialist waterproofing contractors a quick and cost effective solution to protect external areas from water ingress.

System 300 Horizontal Drainage

Newtons range of HDPP and HDPE horizontal drainage membranes provide comprehensive protection of primary waterproofing layers such as Newton 201 RubberFlex. In addition they can act as a filtration layer and also provide reservoir capabilities for specifiers who are designing green or turf roof projects.

System 400 Vertical Drainage

Newton System 400 comprises a range of composite membranes that include a dimpled core of HDPP or HDPE together with a filter fabric that is attached to the core during the manufacturing process. When placed to the retaining wall these membranes protect the primary waterproofing membrane from impact and water pressure, diverting water down to a perforated land drain for removal.

System 500 Cavity Drain Waterproofing

The professional's 'waterproofing system of choice', Newton System 500 is an internally applied waterproofing system based upon our range of cavity drain membranes, drainage conduits and sophisticated pumping and control systems. Unlike conventional 'tanking', Newton System 500 is not attempting the almost impossible and trying to hold water back, but places designed maintainable depressurisation voids at known weaknesses in the structure so that ingressing water is simply captured and diverted out of the property.

System 600 Flooring Membranes

Newton System 600 is a range of HDPE and HDPP flooring membranes offering a complete damp proof solution for both commercial and domestic flooring applications. As well as providing protection from dampness within the floor, our membranes 'de-couple' the floor finish from the substrate preventing damage due to substrate movement and cracking. Newton damp proof membranes can be installed over existing and 'green' concrete. In addition our flooring membranes are a popular solution for dealing with inherent hydrocarbons or ground gas problems. Newton flooring membranes can accommodate a variety of finishes including timber floors, screeds and direct tiles.

System 700 Liquid Applied Floor Coatings

System 700 is a range of liquid applied protective and decorative internal flooring products. These products are fast curing and available in a variety of colours, and are typically used for the refurbishment and protection of commercial and domestic floors.

System 800 Damp Proofing

Newton System 800 is a range of BBA approved damp proof membranes and ancillaries which are quick and clean to install offering a permanent solution for damp proofing walls. The meshed membranes provide a firm key and impermeable barrier on damp or deteriorating surface ready for plaster, render or dot & dab plasterboard. The un-meshed Newton 803 is used where insulation requirements dictate the use of a timber or steel frame ready for plasterboard.

System 900 Liquid Primers and Sealers

Newtons high performance range of liquid applied products are used in conjunction with System 200 and 700 liquid membranes. They act as priming agents for a variety of substrates prior to the application of our specialist waterproofing and flooring membranes.

Sump and pump

Newtons have an extensive range of submersible pumps and pumping ancillaries. We supply the highest quality pumps available in each class, for the control of clean ground water, grey water, effluent or sewage. Newtons can also provide a wide range of specialist submersible pumps and sump chambers which can be tailor made for site-specific conditions.



National Installer Network

Newton Registered Installers are trained and monitored by John Newton & Company so that we have not just the best damp proofing systems but the best specialist damp proofing contractors to diagnose your problem, design your damp proofing system and install Newton damp proof membranes to the very highest standards. In addition, Newton Registered Installers provide an insurance backed guarantee.

Please contact us for a list of Registered Installers in your area.

For further information please contact John Newton & Company

t 01732 360 095
e info@newton-membranes.co.uk
w www.newton-membranes.co.uk



JOHN NEWTON

WATERPROOFING SYSTEMS

John Newton & Co Ltd, Est 1848, is the UK's leading independent supplier of damp proofing membranes, structural waterproofing systems, water control and drainage products.

Newtons offer the best available, BBA certificated solutions for waterproofing and damp proofing applications in new-build and refurbishment projects. Our range of structural waterproofing systems, including cementitious products, deck and roofing membranes and liquid applied floor coatings enable us to offer full waterproofing solutions for a wide variety of projects.

Newton Waterproofing Systems control and remove unwanted water from leaking tunnels and underpasses, railway arches, wet basements, flooded cellars and damp vaults to make warm habitable areas or areas suitable for dry storage in both commercial and domestic projects.

John Newton & Company
Newton House
17-19 Sovereign Way
Tonbridge
Kent TN9 1RH

t 01732 360 095
e info@newton-membranes.co.uk
w www.newton-membranes.co.uk