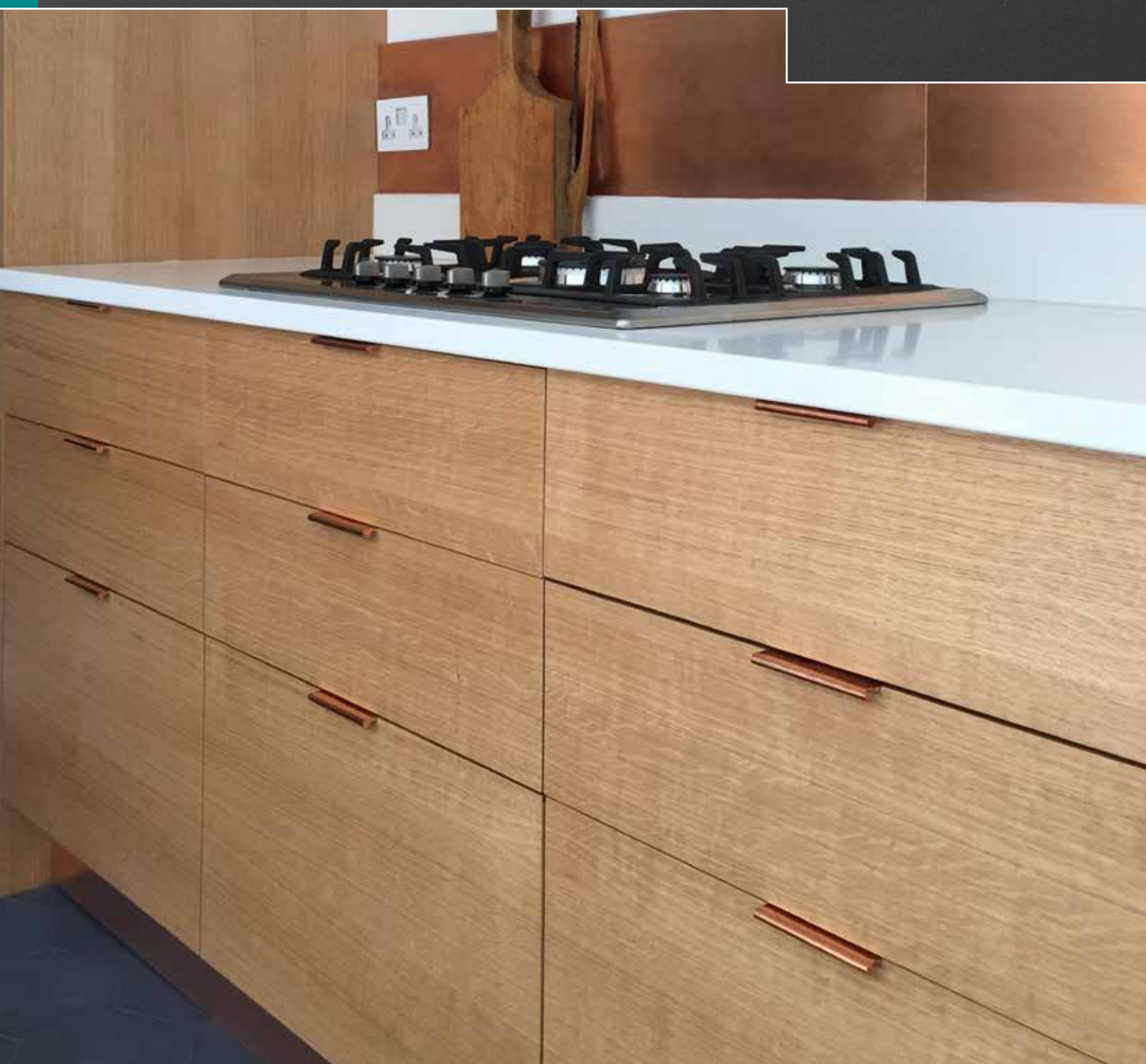


# EDGE PULLS

Solid brass edge pulls



# EDGE PULL

The solid brass edge pulls are ideal for use on drawers and various door types. With a simple modern design they will compliment any style of furniture and room. The edge pull is suitable for 18 mm and 44 mm+ thick profiles and are available in standard and bespoke lengths in a wide range of finishes including PVD. The PVD finishes have an abrasion and tarnish resistant surface with salt spray tests achieved for over 1,000 hours.

---

## PRODUCT FEATURES

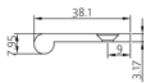
- › solid brass edge pulls for use on drawers and various door types
  - › simple modern design that will compliment any style of furniture
  - › supplied with brass Pozi-drive or slotted head woodscrews
  - › available in standard 50 mm, 75 mm, 100mm and 200mm sizes
  - › bespoke lengths and sizes prices on application
  - › various finishes including standard and PVD
- 



# EDGE PULL



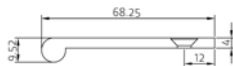
0012



0012



0039



0039

## Small Solid Brass Edge Pull Ref. 0012

Suitable for 18 mm thick profiles

### Edge Pull

#### Product Features

- Solid brass edge pulls for use on drawers and various door types
- Simple modern design that will compliment any style of furniture
- Available in standard 50mm, 75 mm, 100 mm and 200 mm sizes
- Various finishes including standard and PVD

#### Technical Data

Suitable Profile Size	18.0 mm
Height	50.0/75.0/100.0/200.0 mm
Knuckle Diameter	7.95 mm
Screw Size	8.0 g

## Large Solid Brass Edge Pull Ref. 0039

Suitable for 44 mm thick profiles

### Edge Pull

#### Product Features

- Solid brass edge pulls for use on drawers and various door types
- Simple modern design that will compliment any style of furniture
- Available in standard 50mm, 75 mm, 100 mm and 200 mm sizes
- Various finishes including standard and PVD

#### Technical Data

Suitable Profile Size	44.0 mm
Height	50.0/75.0/100.0/200.0 mm
Knuckle Diameter	9.52 mm
Screw Size	10.0 g

#### Finishes

Aged Brass (UK 501), Antique Brass (UK 502), Antique Nickel (UK 503), Black Nickel (UK 504), Copper Bronze (UK 505), Copper (UK 506), Honeycombe (UK 507), Imitation Bronze (UK 508), Midnight (UK 509), Pearl Nickel (UK 510), Polished Chrome (UK 511), Polished & Lacquered (UK 512), Polished Nickel (UK 513), Satin Brass & Lacquered (UK 514), Satin Chrome (UK 515), Satin Nickel (UK 516)

PVD Finishes: PVD Brass (UK 517), PVD Copper Rose (UK 518), PVD Matt Black (UK 519), PVD Rainbow (UK 520), PVD Stainless Steel Effect (UK 521)

Salt spray tested to over 1,000 hours

#### Note

Supplied with brass Pozi-drive head woodscrews.  
Bespoke length and sizes prices on application.

# EDGE PULL

## Solid Brass Cube Edge Pull Ref. 0079

Suitable for 18 mm thick profiles

Edge Pull		
-----------	--	--

**Product Features**

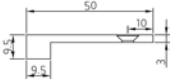
- Solid brass edge pulls for use on drawers and various door types
- Simple modern design that will compliment any style of furniture
- Available in standard 50mm, 75 mm, 100 mm and 200 mm sizes
- Various finishes including standard and PVD

**Technical Data**

Suitable Profile Size	18.0 mm
Height	50.0/75.0/100.0/200.0 mm
Knuckle Diameter	9.5 mm
Screw Size	8.0 g



0079



0079

## Solid Brass Cube Edge Pull with Radius Angle Return Ref. 0080

Suitable for 18 mm thick profiles

Edge Pull		
-----------	--	--

**Product Features**

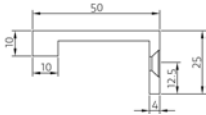
- Solid brass edge pulls for use on drawers and various door types
- Simple modern design that will compliment any style of furniture
- Available in standard 50mm, 75 mm, 100 mm and 200 mm sizes
- Various finishes including standard and PVD

**Technical Data**

Suitable Profile Size	18.0 mm
Height	50.0/75.0/100.0/200.0 mm
Knuckle Diameter	10.0 mm
Screw Size	8.0 g



0080



0080

**Finishes**

Aged Brass (UK 501), Antique Brass (UK 502), Antique Nickel (UK 503), Black Nickel (UK 504), Copper Bronze (UK 505), Copper (UK 506), Honeycombe (UK 507), Imitation Bronze (UK 508), Midnight (UK 509), Pearl Nickel (UK 510), Polished Chrome (UK 511), Polished & Lacquered (UK 512), Polished Nickel (UK 513), Satin Brass & Lacquered (UK 514), Satin Chrome (UK 515), Satin Nickel (UK 516)

PVD Finishes: PVD Brass (UK 517), PVD Copper Rose (UK 518), PVD Matt Black (UK 519), PVD Rainbow (UK 520), PVD Stainless Steel Effect (UK 521)

Salt spray tested to over 1,000 hours

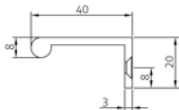
**Note**

Supplied with brass Pozi-drive head woodscrews.  
Bespoke length and sizes prices on application.

# EDGE PULL



0082



0082

## Small Solid Brass Edge Pull with Angle Return Ref. 0082

Suitable for 18 mm thick profiles

Edge Pull		
-----------	--	--

### Product Features

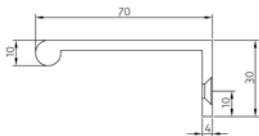
- Solid brass edge pulls for use on drawers and various door types
- Simple modern design that will compliment any style of furniture
- Available in standard 50mm, 75 mm, 100 mm and 200 mm sizes
- Various finishes including standard and PVD

### Technical Data

Suitable Profile Size	18.0 mm
Height	50.0/75.0/100.0/200.0 mm
Knuckle Diameter	8.0 mm
Screw Size	8.0 g



0081



0081

## Large Solid Brass Edge Pull with Angle Return Ref. 0081

Suitable for 44 mm thick profiles

Edge Pull		
-----------	--	--

### Product Features

- Solid brass edge pulls for use on drawers and various door types
- Simple modern design that will compliment any style of furniture
- Available in standard 50mm, 75 mm, 100 mm and 200 mm sizes
- Various finishes including standard and PVD

### Technical Data

Suitable Profile Size	44.0 mm
Height	50.0/75.0/100.0/200.0 mm
Knuckle Diameter	10.0 mm
Screw Size	10.0 g

### Finishes

Aged Brass (UK 501), Antique Brass (UK 502), Antique Nickel (UK 503), Black Nickel (UK 504), Copper Bronze (UK 505), Copper (UK 506), Honeycombe (UK 507), Imitation Bronze (UK 508), Midnight (UK 509), Pearl Nickel (UK 510), Polished Chrome (UK 511), Polished & Lacquered (UK 512), Polished Nickel (UK 513), Satin Brass & Lacquered (UK 514), Satin Chrome (UK 515), Satin Nickel (UK 516)

PVD Finishes: PVD Brass (UK 517), PVD Copper Rose (UK 518), PVD Matt Black (UK 519), PVD Rainbow (UK 520), PVD Stainless Steel Effect (UK 521)

Salt spray tested to over 1,000 hours

### Note

Supplied with brass Pozi-drive head woodscrews.  
Bespoke length and sizes prices on application.



## STANDARD FINISHES



Aged Brass (UK 501)



Antique Brass (UK 502)



Antique Nickel (UK 503)



Black Nickel (UK 504)



Copper Bronze (UK 505)



Copper (SW 506)



Honeycombe (UK 507)

Imitation Bronze  
(UK 508)

Midnight (UK 509)



Pearl Nickel (UK 510)

Polished Chrome  
(UK 511)Polished & Lacquered  
(UK 512)

Polished Nickel (UK 513)

Satin Brass & Lacquered  
(UK 514)

Satin Chrome (UK 515)



Satin Nickel (UK 516)

### Care of Finishes

1. Regular cleaning with a cloth dampened with good light oil or lanolin should be enough to keep all finishes in its original condition for a long period.
2. For extra cleaning of polished and lacquered finishes it is recommended that a good quality wax polish is used, particularly on externally fitted items, applied every few weeks.
3. Some lacquered finishes can break down eventually due to adverse conditions. Therefore the

life of all finishes is beyond our control and cannot be guaranteed.

4. For more information regarding salt spray corrosion testing on certain finishes to BS EN 1670 please contact your distributor or the manufacturer.
5. Do not use Solvents, cleaning chemicals or abrasive products on surface finishes.
6. Do not apply adhesive tapes to any surface finishes.

## PVD FINISHES



PVD Brass (UK 517)

PVD Copper Rose  
(UK 518)PVD Matt Black  
(UK 519)

PVD Rainbow (UK 520)

PVD Stainless Steel  
Effect (UK 521)

# SERVICE – COMPREHENSIVE EXPERTISE FOR YOUR DAILY WORK

We are happy to provide you with all the documentation you need to determine the most suitable hinge system for your building project. Please contact us: we would be delighted to work with you to choose the best solution – from high-quality standard elements right up to the most complex solutions.

All our brochures and data sheets can be requested in a printed version, or you can simply download them on the spot – and the same applies to our fitting instructions and milling data.

Our friendly and knowledgeable application engineers will be pleased to help you and advise you.

**[www.simonswerk.co.uk](http://www.simonswerk.co.uk)**

---

## VISIT OUR PRODUCTSELECTOR

Whether you are a manufacturer, trade partner or designer, at [www.simonswerk.co.uk](http://www.simonswerk.co.uk) you can find precise, detailed product descriptions that will help you to choose the most suitable hinge systems.



## CONTAINS

Solid Brass Edge Pulls:

Ref. 0012

Ref. 0039

Ref. 0079

Ref. 0080

Ref. 0082

Ref. 0081

PLEASE VISIT OUR PRODUCTSELECTOR AT  
**[www.simonswerk.co.uk](http://www.simonswerk.co.uk)**



**SIMONSWERK UK Ltd**

Burcot Works, Spring Street  
Tipton, West Midland DY4 8TF  
United Kingdom

Phone +44 (0)121 522 2848

Fax +44 (0)121 522 7042

[sales@simonswerk.co.uk](mailto:sales@simonswerk.co.uk)

[www.simonswerk.co.uk](http://www.simonswerk.co.uk)