

## NIGHTPAY HATCH

**DIMENSIONS** (mm)  
H: 184 W: 365 D: 465

**WEIGHT**(kg)  
17

**CONSTRUCTION**  
304 stainless steel

**PART NUMBER**  
Part number: 009694

## NIGHTPAY HATCH

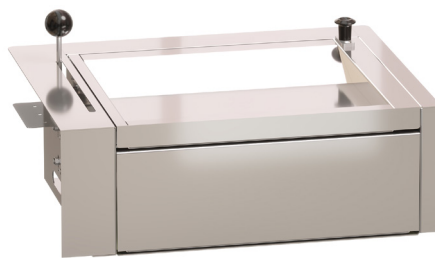
A NightPay Hatch ensures the protection of staff, allowing continuation of trading at times of high risk. They include both a large bulk goods drawer and sliding cash tray. Typical applications are petrol forecourts, late night pharmacies, convenience stores and fast food restaurants.

### MAIN FEATURES

- NightPay hatches fit into an aperture cut into the wall and counter surface
- When not in use the bulk drawer locks into a closed position
- A low cost solution
- Able to withstand attack and vandalism ensuring protection for staff

### OPTIONAL

- Installation or supply only offered



CUSTOMER VIEW



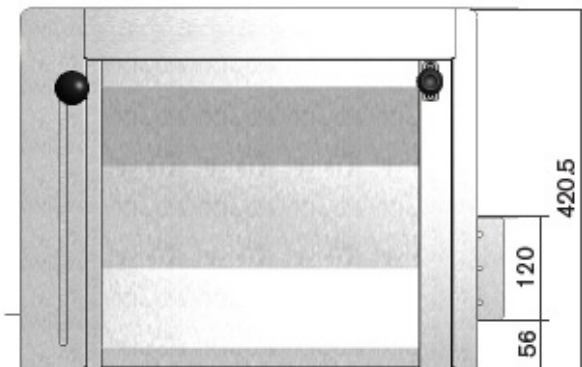
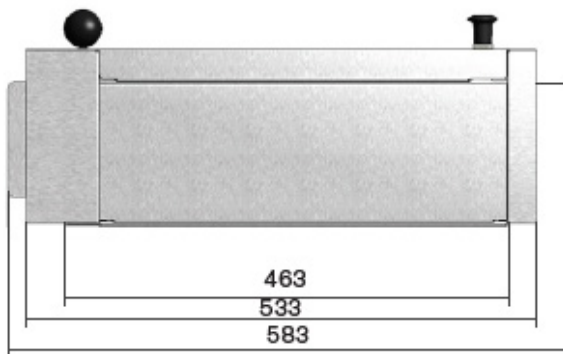
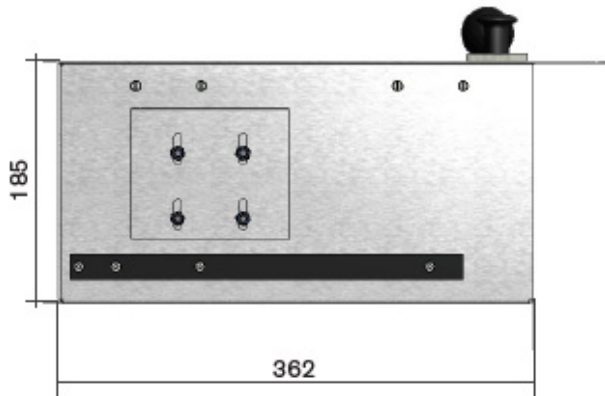
STAFF VIEW

SERVICE &  
MAINTENANCE  
AVAILABLE

**+44 (0) 1322 223 233**

[sales@safetell.co.uk](mailto:sales@safetell.co.uk) [safetell.co.uk](http://safetell.co.uk)

# TECHNICAL DRAWINGS



WE ARE FULLY ACCREDITED



+44 (0) 1322 223 233

