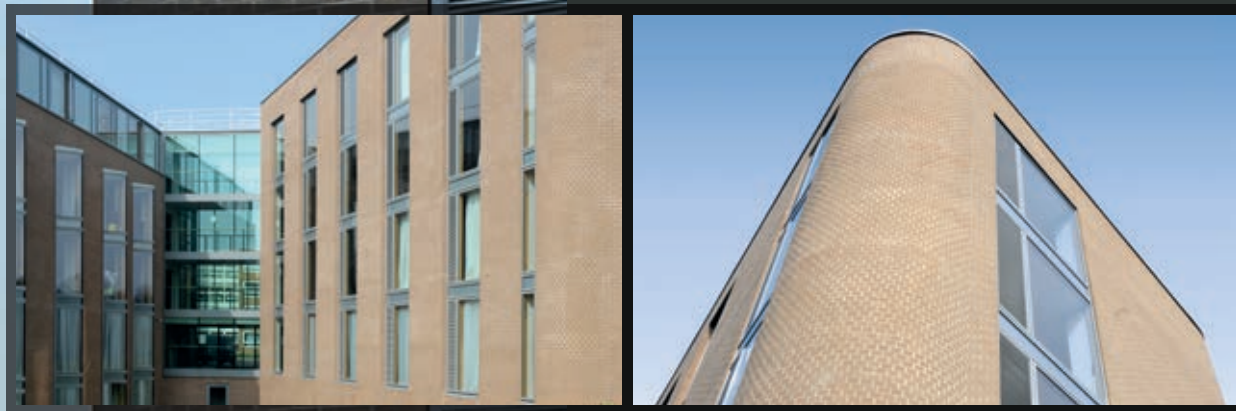




THE GREY RANGE



Project: Bluebell Views Student Accommodation, Warwick University
Architect: Page\Park Architects
Products: Himley Ash Grey

The new Bluebell Views student accommodation project at Warwick University is located in a sensitive site on the edge of the campus. Each of the four residential blocks, designed and constructed to a BREEAM excellent standard, has four flats per level, split into two wings, and linked by a glazed link bridge.

The concept was for these buildings to sit gracefully in the landscape, touching the ground lightly. This is reflected in the external wall finish. The Himley Ash Grey bricks, produced using local clay, allows the buildings and the ground to be linked in a holistic way.



Tonbridge Handmade Grey Brown ▲

4041



Tonbridge Handmade Heather Grey ▲

4042

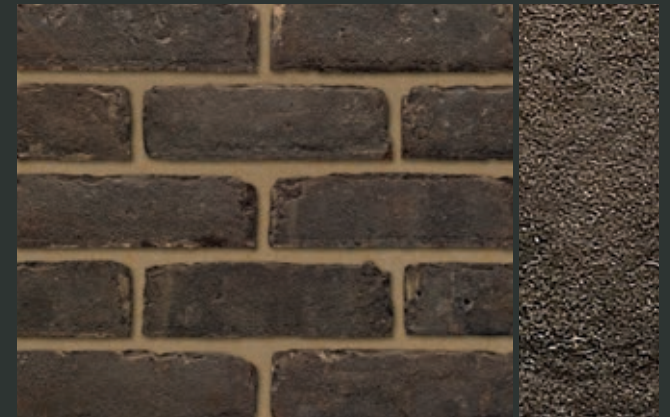


Bevern Dark Multi Stock ▲

4520

▲ also available in 50mm

Project: Learning Disability Centre, Livingston, West Lothian
Architect: Macmon
Product: Tonbridge Handmade Heather Grey



Bevern Kilnwood Dark Multi Stock

4521



Bexhill Dark

4009



Bradgate Medium Grey

0032

Product Name	Code	Durability*	Active Soluble Salts*	Compressive Strength (≥ N/mm ²)*	Water Absorption (≤ %)*	Size Tolerances Mean*	Configuration	Type & Texture	Special Shaped Brick Range	Factory/Location
Tonbridge Handmade Grey Brown	4041	F2	S2	30	15	T1	Single Frog	Handmade Sandcreased	All	Ashdown, East Sussex
Tonbridge Handmade Heather Grey	4042	F2	S2	30	15	T1	Single Frog	Handmade Sandcreased	All	Ashdown, East Sussex
Bevern Dark Multi Stock	4520	F2	S2	21	12	T1	Single Frog	Stock Sandfaced	All	Chailey, East Sussex
Bevern Kilnwood Dark Multi Stock	4521	F2	S2	21	12	T1	Single Frog	Stock Sandfaced	Limited	Chailey, East Sussex
Bexhill Dark	4009	F2	S2	30	15	T1	Single Frog	Stock Sandfaced	All	Ashdown, East Sussex
Bradgate Medium Grey	0032	F2	S2	20	20	T2	Single Frog	Stock Sandcreased	All	Leicester, Leicestershire

* To BS EN 771-1



Project: Private House, Woodpark, Dublin
 Architect: Stephen Mulhall Architects
 Product: West Hoathly Dark Multi Stock



Cottage Mixture

4001



Crowborough Multicoloured Stock

4002



Kingscote Grey Multi

0750

Project: Primary School, Cambuslang, South Lanarkshire
Architect: RMJM
Products: Kingscote Grey Multi & Himley Ebony Black



West Hoathly Dark Multi Stock

0735

Product Name	Code	Durability*	Active Soluble Salts*	Compressive Strength (≥ N/mm²)*	Water Absorption (≤%)*	Size Tolerances Mean*	Configuration	Type & Texture	Special Shaped Brick Range	Factory/Location
Cottage Mixture	4001	F2	S2	30	15	T1	Single Frog	Stock Sandfaced	All	Ashdown, East Sussex
Crowborough Multicoloured Stock	4002	F2	S2	30	15	T1	Single Frog	Stock Sandfaced	All	Ashdown, East Sussex
Kingscote Grey Multi	0750	F2	S2	25	12	T2	Single Frog	Stock Sandfaced	All	West Hoathly, West Sussex
West Hoathly Dark Multi Stock	0735	F2	S2	25	12	T2	Single Frog	Stock Sandfaced	All	West Hoathly, West Sussex

* To BS EN 771-1



Black Smooth

5144



Brunswick Tryfan Grey

0642



Dark Grey

5146



Project: Apartments, Govan, Glasgow
 Architect: DO Architecture
 Product: Brunswick Tryfan Grey



Himley Ash Grey

0358



Himley Ebony Black

0354



Holbrook Sandfaced Black

4149



Holbrook Sandfaced Dark

4120



Light Grey

5147



Multi Grey Rustic

0268

Product Name	Code	Durability*	Active Soluble Salts*	Compressive Strength (≥ N/mm²)*	Water Absorption (≤%)*	Size Tolerances Mean*	Configuration	Type & Texture	Special Shaped Brick Range	Factory/Location
Black Smooth	5144	F2	S2	40	6	T2	Vertically Perforated	Wirecut Smooth	Limited	Imported
Brunswick Tryfan Grey	0642	F2	S2	50	12	T2	Vertically Perforated	Wirecut Rolled	All	Cattybrook, Bristol
Dark Grey	5146	F2	S2	40	6	T2	Vertically Perforated	Wirecut Smooth	Limited	Imported
Himley Ash Grey	0358	F2	S2	45	12	T2	Vertically Perforated	Wirecut Dragfaced	Limited	Aldridge, West Midlands
Himley Ebony Black	0354	F2	S2	55	12	T2	Vertically Perforated	Wirecut Dragfaced	Limited	Aldridge, West Midlands
Holbrook Sandfaced Black	4149	F2	S2	40	12	T2	Vertically Perforated	Wirecut Sandfaced	All	South Holmwood, Surrey
Holbrook Sandfaced Dark	4120	F2	S2	40	12	T2	Vertically Perforated	Wirecut Sandfaced	Limited	South Holmwood, Surrey
Light Grey	5147	F2	S2	40	6	T2	Vertically Perforated	Wirecut Smooth	Limited	Imported
Multi Grey Rustic	0268	F2	S2	35	12	T2	Vertically Perforated	Wirecut Rusticated	Limited	Aldridge, West Midlands

* To BS EN 771-1

Project: Apartments, Kilmarnock, Ayrshire

Architect: Smith Design

Products: Throckley Smooth Grey, Tradesman Antique Grey & Kilcreggan Multi Stock





Royston Silver Grey

2785



Silver Grey Rustic

2722



Throckley Smooth Grey

2723



Tradesman Antique Grey

0314



Tradesman Light ●

0382

Product Name	Code	Durability*	Active Soluble Salts*	Compressive Strength (≥ N/mm²)*	Water Absorption (≤ %)*	Size Tolerances Mean*	Configuration	Type & Texture	Special Shaped Brick Range	Factory/Location
Royston Silver Grey	2785	F2	S2	60	9	T2	Vertically Perforated	Wirecut Dragfaced	Limited	Throckley, Tyne & Wear
Silver Grey Rustic	2722	F2	S2	60	9	T2	Vertically Perforated	Wirecut Rusticated	All	Throckley, Tyne & Wear
Throckley Smooth Grey	2723	F2	S2	60	9	T2	Vertically Perforated	Wirecut Smooth	All	Throckley, Tyne & Wear
Tradesman Antique Grey	0314	F2	S2	65	9	T2	Vertically Perforated	Wirecut Rolled	Limited	Atlas, West Midlands
Tradesman Light	0382	F2	S2	65	9	T2	Vertically Perforated	Wirecut Rolled	Limited	Atlas, West Midlands

* To BS EN 771-1

● also available in 73mm