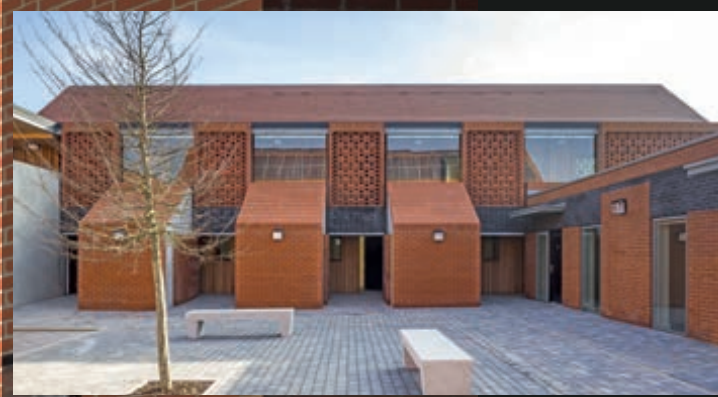




**BDA AWARD
WINNER 2013**
Best Housing Development 6-25 Units



THE RED RANGE



Project: Housing, Colchester, Essex
Architect: Proctor & Matthews
Products: Parham Red Stock & Special Black

Hargood Close, a supported housing scheme of mixed residential units in Colchester, is arranged around two landscaped courtyards which were inspired by the several 19th Century almshouses found in this part of Essex.

Highly textured and beautifully crafted brickwork panels give rhythm, scale and expression to the buildings. The panels feature a projecting bond on some elevations, whilst on the upper level of the cloisters they are formed of a perforated bond that provides a dappled light as well as ventilation. Constanze Leibrock of architects Proctor & Matthews comments: "The Parham Red Stock brick was chosen partly to reflect the surrounding local context and partly due to its warm vibrant colour which enhances the welcoming atmosphere of the development".



Kingston Handmade Heather Red ◆

4355

Bespoke Blends

It is now possible to create your own blend from existing Ashdown, Birtley, Chailey, Laybrook, Leicester, Swanage and West Hoathly stock bricks.

If you have a specific requirement involving stock bricks that our standard range of products does not meet, Ibstock now offers a brick blending service with no blending on site necessary. This is ideal for matching existing brickwork, blending with adjacent buildings or creating your own bespoke blend. For more information contact your local sales office on 0844 800 4575 or visit our website and use the brick blending app www.ibstock.com/bespokeblends.



Kingston Handmade Light Red ◆

4357

◆ also available in Imperial (228 x 110 x 68mm) format



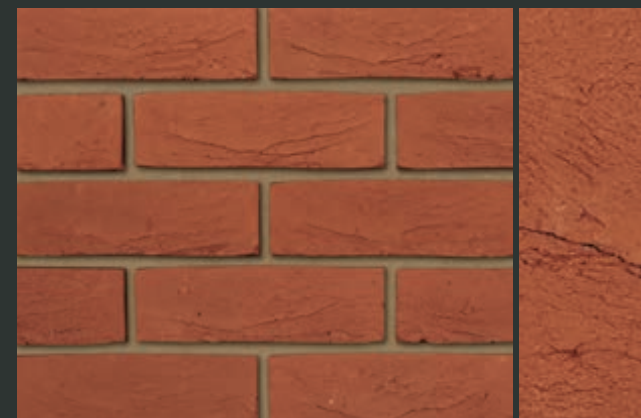


Project: Private House, Great Saling, Essex
 Architect: Duncan Clark & Beckett
 Product: Swanage Handmade Light Red



Kingston Handmade Light Red Multi ◆

4356



Kingston Handmade Restoration Red ◆

4354



Swanage Handmade Heather Red ▲

4301



Swanage Handmade Light Red ▲

4302

Product Name	Code	Durability*	Active Soluble Salts*	Compressive Strength (≥ N/mm²)*	Water Absorption (≤%)*	Size Tolerances Mean*	Configuration	Type & Texture	Special Shaped Brick Range	Factory/Location
Kingston Handmade Heather Red	4355	F2	S2	15	13	T1	Single Frog	Handmade Sandcreased	All	Swanage, Dorset
Kingston Handmade Light Red	4357	F2	S2	15	13	T1	Single Frog	Handmade Sandcreased	All	Swanage, Dorset
Kingston Handmade Light Red Multi	4356	F2	S2	15	13	T1	Single Frog	Handmade Sandcreased	All	Swanage, Dorset
Kingston Handmade Restoration Red	4354	F2	S2	15	13	T1	Single Frog	Handmade Sandcreased	All	Swanage, Dorset
Swanage Handmade Heather Red	4301	F2	S2	15	13	T1	Single Frog	Handmade Sandcreased	All	Swanage, Dorset
Swanage Handmade Light Red	4302	F2	S2	15	13	T1	Single Frog	Handmade Sandcreased	All	Swanage, Dorset

* To BS EN 771-1

◆ also available in Imperial (228 x 110 x 68mm) format ▲ also available in 50mm





© David Richmond

Project: Douai Abbey Library, Reading, Berkshire
Architect: David Richmond & Partners
Product: Swanage Handmade Light Red Multi



Swanage Handmade Light Red Multi ▲

4303



Swanage Handmade Restoration Red ▲

4312



Tonbridge Handmade Multi ▲

4043



West Hoathly Handmade Multi Stock ▲

4046

Product Name	Code	Durability*	Active Soluble Salts*	Compressive Strength (≥ N/mm ²)*	Water Absorption (≤%)*	Size Tolerances Mean*	Configuration	Type & Texture	Special Shaped Brick Range	Factory/Location
Swanage Handmade Light Red Multi	4303	F2	S2	15	13	T1	Single Frog	Handmade Sandcreased	All	Swanage, Dorset
Swanage Handmade Restoration Red	4312	F2	S2	15	13	T1	Single Frog	Handmade Sandcreased	All	Swanage, Dorset
Tonbridge Handmade Multi	4312	F2	S2	30	15	T1	Single Frog	Handmade Sandcreased	All	Ashdown, East Sussex
West Hoathly Handmade Multi Stock	4046	F2	S2	30	15	T1	Single Frog	Handmade Sandcreased	All	Ashdown, East Sussex

* To BS EN 771-1

▲ also available in 50mm



Audley Red Mixture Stock

3022



Berkshire Orange Stock

0771





Project: Retirement Home, Hale Barns, Greater Manchester
Architect: Scurr Architects Ltd
Products: Bexhill Red & Arden Red (Detailing)



Betley Cottage Blend

3058



Bexhill Purple Multi

4033



Bexhill Red

4010



Bradgate Claret

0031

Product Name	Code	Durability*	Active Soluble Salts*	Compressive Strength (≥ N/mm²)*	Water Absorption (≤ %)*	Size Tolerances Mean*	Configuration	Type & Texture	Special Shaped Brick Range	Factory/Location
Audley Red Mixture Stock	3022	F2	S2	15	13	T2	Single Frog	Stock Sandfaced	All	Parkhouse, Staffordshire
Berkshire Orange Stock	0771	F2	S2	25	14	Tm	Single Frog	Stock Sandfaced	All	Laybrook, West Sussex
Betley Cottage Blend	3058	F2	S2	15	13	T2	Single Frog	Stock Sandfaced	All	Parkhouse, Staffordshire
Bexhill Purple Multi	4033	F2	S2	30	15	T1	Single Frog	Stock Sandfaced	All	Ashdown, East Sussex
Bexhill Red	4010	F2	S2	30	15	T1	Single Frog	Stock Sandfaced	All	Ashdown, East Sussex
Bradgate Claret	0031	F2	S2	20	19	T2	Single Frog	Stock Sandcreased	All	Leicester, Leicestershire

* To BS EN 771-1

BDA AWARD WINNER 2013

Best Housing Development 1-5 Units

Project: Private House, Reydon, Suffolk

Architect: Lucy Marston

Product: Chailey Rustic Stock



IBSTOCK
EXPLORE



Bradgate Red

0020



Bradgate Regal

0021



Capital Multi Stock

0717



Chailey Rustic Stock ▲

4514



Chailey Stock ▲

4501

Product Name	Code	Durability*	Active Soluble Salts*	Compressive Strength (≥ N/mm²)*	Water Absorption (≤%)*	Size Tolerances Mean*	Configuration	Type & Texture	Special Shaped Brick Range	Factory/Location
Bradgate Red	0020	F2	S2	20	19	T2	Single Frog	Stock Sandcreased	All	Leicester, Leicestershire
Bradgate Regal	0021	F2	S2	20	19	T2	Single Frog	Stock Sandcreased	All	Leicester, Leicestershire
Capital Multi Stock	0717	F2	S2	25	14	Tm	Single Frog	Stock Sandfaced	All	Laybrook, West Sussex
Chailey Rustic Stock	4514	F2	S2	21	12	T1	Single Frog	Stock Sandfaced	All	Chailey, East Sussex
Chailey Stock	4501	F2	S2	21	12	T1	Single Frog	Stock Sandfaced	All	Chailey, East Sussex

* To BS EN 771-1

▲ also available in 50mm



Project: Station, Wakayama University, Japan
Architect: Nikken Design Corporation, Japan
Products: Blend of Bradgate Regal & Grosvenor Autumn Flame



Cissbury Red Multi Stock

0767



Dorset Multi Red Stock

4941



Dorset Red Stock

4932



Grosvenor Autumn Flame

0176

Product Name	Code	Durability*	Active Soluble Salts*	Compressive Strength (≥ N/mm²)*	Water Absorption (≤ %)*	Size Tolerances Mean*	Configuration	Type & Texture	Special Shaped Brick Range	Factory/Location
Cissbury Red Multi Stock	0767	F2	S2	25	14	Tm	Single Frog	Stock Sandfaced	All	Laybrook, West Sussex
Dorset Multi Red Stock	4941	F2	S2	20	19	T2	Single Frog	Stock Sandfaced	All	Ellistown, Leicestershire
Dorset Red Stock	4932	F2	S2	20	19	T2	Single Frog	Stock Sandfaced	All	Ellistown, Leicestershire
Grosvenor Autumn Flame	0176	F2	S2	20	19	T2	Single Frog	Stock Sandcreased	All	Leicester, Leicestershire

* To BS EN 771-1



Grosvenor County Mixture

0149



Hamsey Mixed Stock ▲

4517



Heritage Red Blend

4986

▲ also available in 50mm

Project: School, London SE1
Architect: Cottrell & Vermeulen
Product: Heritage Red Blend





Ivanhoe Antique

0060



Ivanhoe Cottage Blend

0055



Ivanhoe Katrina Multi

0059

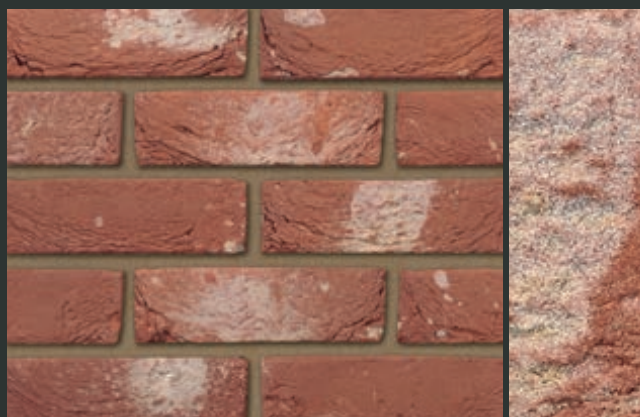
Product Name	Code	Durability*	Active Soluble Salts*	Compressive Strength (\geq N/mm ²)*	Water Absorption (\leq %)*	Size Tolerances Mean*	Configuration	Type & Texture	Special Shaped Brick Range	Factory/Location
Grosvenor County Mixture	0149	F2	S2	20	19	T2	Single Frog	Stock Sandcreased	All	Leicester, Leicestershire
Hamsey Mixed Stock	4517	F2	S2	21	12	T1	Single Frog	Stock Sandfaced	All	Chailey, East Sussex
Heritage Red Blend	4986	F2	S2	20	19	T2	Single Frog	Stock Sandfaced	All	Ellistown, Leicestershire
Ivanhoe Antique	0060	F2	S2	20	19	T2	Single Frog	Stock Sandcreased	All	Leicester, Leicestershire
Ivanhoe Cottage Blend	0055	F2	S2	20	19	T2	Single Frog	Stock Sandcreased	All	Leicester, Leicestershire
Ivanhoe Katrina Multi	0059	F2	S2	20	19	T2	Single Frog	Stock Sandcreased	All	Leicester, Leicestershire

* To BS EN 771-1





Project: Private House, Prestbury, Cheshire
Architect: Fallows Gowen Partnership
Product: Ivanhoe Olde Village



Ivanhoe Mellow Red

0058



Ivanhoe Olde Village

0062



Lambourn Orange Multi Stock

3035



Laybrook Imperial Red Stock 68mm

0756



Leicester Autumn Multi

4937

Product Name	Code	Durability*	Active Soluble Salts*	Compressive Strength (≥ N/mm²)*	Water Absorption (≤%)*	Size Tolerances Mean*	Configuration	Type & Texture	Special Shaped Brick Range	Factory/Location
Ivanhoe Mellow Red	0058	F2	S2	20	19	T2	Single Frog	Stock Sandcreased	All	Leicester, Leicestershire
Ivanhoe Olde Village	0062	F2	S2	20	19	T2	Single Frog	Stock Sandcreased	All	Leicester, Leicestershire
Lambourn Orange Multi Stock	3035	F2	S2	15	13	T2	Single Frog	Stock Sandfaced	All	Parkhouse, Staffordshire
Laybrook Imperial Red Stock 68mm	0756	F2	S2	20	19	T1	Single Frog	Stock Sandfaced	All	Laybrook, West Sussex
Leicester Autumn Multi	4937	F2	S2	20	19	T2	Single Frog	Stock Sandfaced	All	Ellistown, Leicestershire

* To BS EN 771-1



Project: Commercial Development, London SW1
Architect: Rolfe Judd Architects
Products: Leicester Weathered Red



Leicester Multi Red Stock



Leicester Red Stock

4930



Leicester Weathered Multi

4935



Leicester Weathered Red

4934



Mellow Ashridge Stock

3025



Mellow Regent Stock

3010



New Cavendish Stock

3018



New Sandhurst Stock

3057

Product Name	Code	Durability*	Active Soluble Salts*	Compressive Strength (≥ N/mm²)*	Water Absorption (≤%)*	Size Tolerances Mean*	Configuration	Type & Texture	Special Shaped Brick Range	Factory/Location
Leicester Multi Red Stock	0181	F2	S2	20	19	T2	Single Frog	Stock Sandfaced	All	Leicester, Leicestershire
Leicester Red Stock	4930	F2	S2	20	19	T2	Single Frog	Stock Sandfaced	All	Ellistown, Leicestershire
Leicester Weathered Multi	4935	F2	S2	20	19	T2	Single Frog	Stock Sandfaced	All	Ellistown, Leicestershire
Leicester Weathered Red	4934	F2	S2	20	19	T2	Single Frog	Stock Sandfaced	All	Ellistown, Leicestershire
Mellow Ashridge Stock	3025	F2	S2	15	13	T2	Single Frog	Stock Sandfaced	All	Parkhouse, Staffordshire
Mellow Regent Stock	3010	F2	S2	15	13	T2	Single Frog	Stock Sandfaced	All	Parkhouse, Staffordshire
New Cavendish Stock	3018	F2	S2	15	13	T2	Single Frog	Stock Sandfaced	All	Parkhouse, Staffordshire
New Sandhurst Stock	3057	F2	S2	15	13	T2	Single Frog	Stock Sandfaced	All	Parkhouse, Staffordshire

* To BS EN 771-1

**BDA AWARD
WINNER 2010**
Best International Project

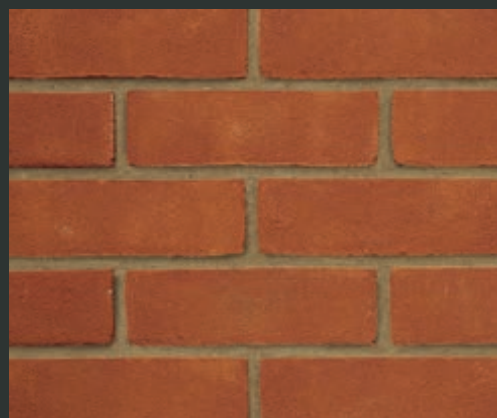
Project: Apartments & Leisure Complex, Rathmines, Dublin
Architect: Donnelly Turpin Architects
Products: West Hoathly Medium Multi Stock



Parham Light Multi Stock



0732



Parham Red Stock



0708



Petworth Multi Stock



0700



Pevensey Multi Stock

4004



Swanage Imperial Light Stock 68mm

4317



Swanage Imperial Red Stock 68mm

4316



Thakeham Red Multi Stock

0709



West Hoathly Medium Multi Stock

0731



West Hoathly Sharpthorne Mixture Stock

0736

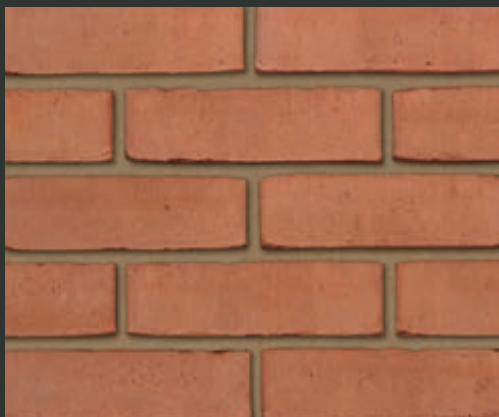


Weston Red Multi Stock

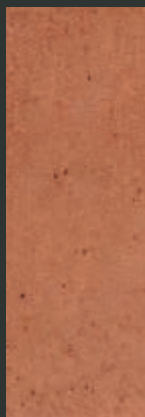
3055

Product Name	Code	Durability*	Active Soluble Salts*	Compressive Strength (≥ N/mm²)*	Water Absorption (≤%)*	Size Tolerances Mean*	Configuration	Type & Texture	Special Shaped Brick Range	Factory/Location
Parham Light Multi Stock	0732	F2	S2	25	14	Tm	Single Frog	Stock Sandfaced	All	Laybrook, West Sussex
Parham Red Stock	0708	F2	S2	25	14	Tm	Single Frog	Stock Sandfaced	All	Laybrook, West Sussex
Petworth Multi Stock	0700	F2	S2	25	14	Tm	Single Frog	Stock Sandfaced	All	Laybrook, West Sussex
Pevensey Multi Stock	4004	F2	S2	30	15	T1	Single Frog	Stock Sandfaced	All	Ashdown, East Sussex
Swanage Imperial Light Stock 68mm	4317	F2	S2	15	13	T1	Single Frog	Stock Sandfaced	All	Swanage, Dorset
Swanage Imperial Red Stock 68mm	4316	F2	S2	15	13	T1	Single Frog	Stock Sandfaced	All	Swanage, Dorset
Thakeham Red Multi Stock	0709	F2	S2	25	14	Tm	Single Frog	Stock Sandfaced	All	Laybrook, West Sussex
West Hoathly Medium Multi Stock	0731	F2	S2	25	12	T2	Single Frog	Stock Sandfaced	All	West Hoathly, West Sussex
West Hoathly Sharpthorne Mixture Stock	0736	F2	S2	25	12	T2	Single Frog	Stock Sandfaced	All	West Hoathly, West Sussex
Weston Red Multi Stock	3055	F2	S2	15	13	T2	Single Frog	Stock Sandfaced	All	Parkhouse, Staffordshire

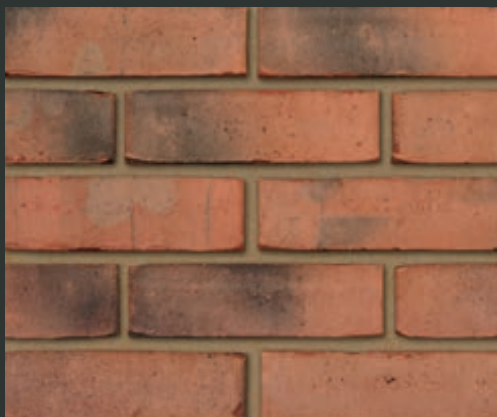
* To BS EN 771-1



Arden Red



4980



Arden Weathered Red



4982



Beamish Blend ●

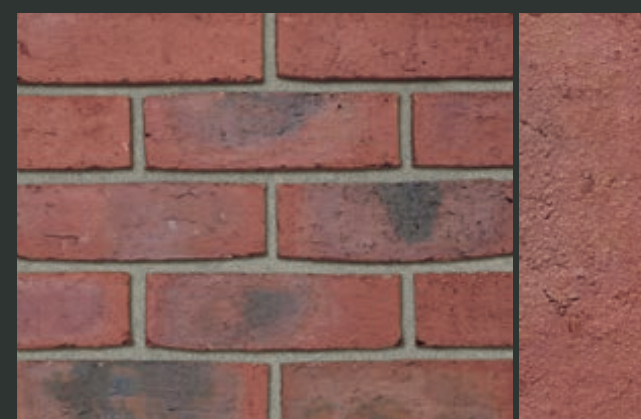


2601

● also available in 73mm



Project: Apartments, Port Sunlight, Merseyside
Architect: Paddock Johnson Partnership
Products: Commercial Red & Atlas Smooth Red



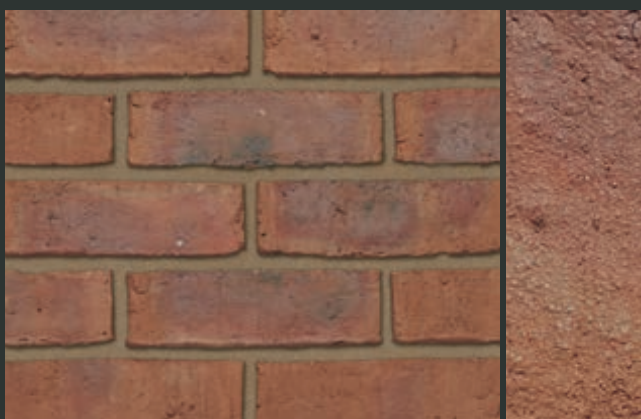
Birtley Olde English ●

2602



Borrowdale Blend ●

2631



Commercial Red ●

2611

Product Name	Code	Durability*	Active Soluble Salts*	Compressive Strength (≥ N/mm²)*	Water Absorption (≤%)*	Size Tolerances Mean*	Configuration	Type & Texture	Special Shaped Brick Range	Factory/Location
Arden Red	4980	F2	S2	20	19	T2	Single Frog	Waterstruck Distressed	All	Ellistown, Leicestershire
Arden Weathered Red	4982	F2	S2	20	19	T2	Single Frog	Waterstruck Distressed	All	Ellistown, Leicestershire
Beamish Blend	2601	F2	S2	20	12	Tm	Solid	Waterstruck Distressed	All	Birtley, Co Durham
Birtley Olde English	2602	F2	S2	20	12	Tm	Solid	Waterstruck Distressed	All	Birtley, Co Durham
Borrowdale Blend	2631	F2	S2	20	12	Tm	Solid	Waterstruck Distressed	All	Birtley, Co Durham
Commercial Red	2611	F2	S2	20	12	Tm	Solid	Waterstruck Distressed	All	Birtley, Co Durham

* To BS EN 771-1

● also available in 73mm

Project: Primary School, Walsall, West Midlands
Architect: Seymour Harris Architecture
Products: Northumbrian Cottage



Cumberland Blend

2629



Northumbrian Cottage

2622



Otterburn Antique

2621



Townhouse Blend

2623



Warwickshire Olde English ●

2613



Project: Private Housing, Market Harborough, Leicestershire
Developer: Davidsons Homes
Products: Cumberland Blend

Product Name	Code	Durability*	Active Soluble Salts*	Compressive Strength (\geq N/mm ²)*	Water Absorption (\leq %)*	Size Tolerances Mean*	Configuration	Type & Texture	Special Shaped Brick Range	Factory/Location
Cumberland Blend	2629	F2	S2	20	12	Tm	Solid	Waterstruck Distressed	All	Birtley, Co Durham
Northumbrian Cottage	2622	F2	S2	20	12	Tm	Solid	Waterstruck Distressed	All	Birtley, Co Durham
Otterburn Antique	2621	F2	S2	20	12	Tm	Solid	Waterstruck Distressed	All	Birtley, Co Durham
Townhouse Blend	2623	F2	S2	20	12	Tm	Solid	Waterstruck Distressed	All	Birtley, Co Durham
Warwickshire Olde English	2613	F2	S2	20	12	Tm	Solid	Waterstruck Distressed	All	Birtley, Co Durham

* To BS EN 771-1

● also available in 73mm



Project: School, Ayr, Ayrshire
Architect: Holmes Miller
Product: Atlas Smooth Red



Alderley Burgundy



2947



Alderley Mixture



2948



Alderley Orange



2946



Aldridge Multi Rustic ●

0270



Aldridge Smooth Red ●

0376



Alnwick Blend

2801



Anglian Red Multi Rustic ●

0257



Anglian Red Rustic ●

0352



Anglian Ruskin Multi 73mm

0356



Atlas Smooth Red ●

0300

Product Name	Code	Durability*	Active Soluble Salts*	Compressive Strength (≥ N/mm²)*	Water Absorption (≤%)*	Size Tolerances Mean*	Configuration	Type & Texture	Special Shaped Brick Range	Factory/Location
Alderley Burgundy	2947	F2	S2	60	10	T2	Vertically Perforated	Wirecut Rolled	All	Chesterton, Staffordshire
Alderley Mixture	2948	F2	S2	60	10	T2	Vertically Perforated	Wirecut Rolled	All	Chesterton, Staffordshire
Alderley Orange	2946	F2	S2	60	10	T2	Vertically Perforated	Wirecut Rolled	All	Chesterton, Staffordshire
Aldridge Multi Rustic	0270	F2	S2	35	12	T2	Vertically Perforated	Wirecut Rusticated	Limited	Aldridge, West Midlands
Aldridge Smooth Red	0376	F2	S2	60	9	T2	Vertically Perforated	Wirecut Smooth	All	Atlas, West Midlands
Alnwick Blend	2801	F2	S2	60	10	T2	Vertically Perforated	Wirecut Rolled	Limited	Throckley, Tyne & Wear
Anglian Red Multi Rustic	0257	F1	S2	35	13	T2	Vertically Perforated	Wirecut Rusticated	Limited	Aldridge, West Midlands
Anglian Red Rustic	0352	F1	S2	35	13	T2	Vertically Perforated	Wirecut Rusticated	Limited	Aldridge, West Midlands
Anglian Ruskin Multi 73mm	0356	F2	S2	35	12	T2	Vertically Perforated	Wirecut Rusticated	Limited	Aldridge, West Midlands
Atlas Smooth Red	0300	F2	S2	60	9	T2	Vertically Perforated	Wirecut Smooth	All	Atlas, West Midlands

* To BS EN 771-1

● also available in 73mm



Baptist Mills Court
36 - 53

Project: Housing, Bristol
Architect: GCP Architects
Products: Barlaston Orange Blend & Staffordshire Slate Blue Smooth



Aston Red Sandfaced ●

0378



Balmoral

2405



Barlaston Orange Blend

2926

● also available in 73mm



Project: Care Home, Chessington, Surrey
Architect: Jim Garland Architects
Product: Bridgwater Weathered Red



Bridgwater Weathered Red

0661

Product Name	Code	Durability*	Active Soluble Salts*	Compressive Strength (\geq N/mm ²)*	Water Absorption (\leq %)*	Size Tolerances Mean*	Configuration	Type & Texture	Special Shaped Brick Range	Factory/Location
Aston Red Sandfaced	0378	F2	S2	60	9	T2	Vertically Perforated	Wirecut Sandfaced	All	Atlas, West Midlands
Balmoral	2405	F2	S2	40	16	T2	Vertically Perforated	Wirecut Sandfaced	Limited	Dorket Head, Nottinghamshire
Barlaston Orange Blend	2926	F2	S2	60	7	T2	Vertically Perforated	Wirecut Sandfaced	All	Chesterton, Staffordshire
Bridgwater Weathered Red	0661	F2	S2	50	10	T2	Vertically Perforated	Wirecut Rolled	Limited	Cattybrook, Bristol

* To BS EN 771-1

Project: School, Poole, Dorset
Architect: Terence O'Rourke
Product: Brunswick Farmhouse Mixture



Border Weathered 73mm

0283



Bristol Mixed Red

0655



Bristol Orange Blend

0656

Bespoke Blends

It is now possible to create your own blend from existing Ashdown, Birtley, Chailey, Laybrook, Leicester, Swanage and West Hoathly stock bricks.

If you have a specific requirement involving stock bricks that our standard range of products does not meet, Ibstock now offers a brick blending service with no blending on site necessary. This is ideal for matching existing brickwork, blending with adjacent buildings or creating your own bespoke blend. For more information contact your local sales office on **0844 800 4575**.



Bristol Red

0630



Brunswick Antique Red

0635



Brunswick Farmhouse Mixture

0636

Product Name	Code	Durability*	Active Soluble Salts*	Compressive Strength (\geq N/mm ²)*	Water Absorption (\leq %)*	Size Tolerances Mean*	Configuration	Type & Texture	Special Shaped Brick Range	Factory/Location
Border Weathered 73mm	0283	F2	S2	55	12	T2	Vertically Perforated	Wirecut Sandfaced	Limited	Aldridge, West Midlands
Bristol Mixed Red	0655	F2	S2	50	10	T2	Vertically Perforated	Wirecut Dragfaced	All	Cattybrook, Bristol
Bristol Orange Blend	0656	F2	S2	50	10	T2	Vertically Perforated	Wirecut Dragfaced	All	Cattybrook, Bristol
Bristol Red	0630	F2	S2	50	10	T2	Vertically Perforated	Wirecut Dragfaced	All	Cattybrook, Bristol
Brunswick Antique Red	0635	F2	S2	50	10	T2	Vertically Perforated	Wirecut Rolled	All	Cattybrook, Bristol
Brunswick Farmhouse Mixture	0636	F2	S2	50	10	T2	Vertically Perforated	Wirecut Rolled	All	Cattybrook, Bristol

* To BS EN 771-1

Project: Social Housing, Widnes, Cheshire
Architect: Denovo Design
Products: Calderstone Claret & Staffordshire Slate Blue Smooth



Brunswick Red

0637



Burntwood Antique 73mm

0254



Calderstone Claret

3577



Calderstone Russett 3578



Callerton Weathered Red 73mm 2764



Cavendish Dorket Fireglow 2431



Project: Social Housing, Widnes, Cheshire
 Architect: Denovo Design
 Products: Calderstone Claret & Staffordshire Slate Blue Smooth

Product Name	Code	Durability*	Active Soluble Salts*	Compressive Strength (≥ N/mm²)*	Water Absorption (≤%)*	Size Tolerances Mean*	Configuration	Type & Texture	Special Shaped Brick Range	Factory/Location
Brunswick Red	0637	F2	S2	50	10	T2	Vertically Perforated	Wirecut Rolled	All	Cattybrook, Bristol
Burntwood Antique 73mm	0254	F2	S2	35	12	T2	Vertically Perforated	Wirecut Rusticated	Limited	Aldridge, West Midlands
Calderstone Claret	3577	F2	S2	60	9	T2	Vertically Perforated	Wirecut Dragfaced	Limited	Ravenhead, Lancashire
Calderstone Russett	3578	F2	S2	60	9	T2	Vertically Perforated	Wirecut Dragfaced	Limited	Ravenhead, Lancashire
Callerton Weathered Red 73mm	2764	F2	S2	75	10	T2	Vertically Perforated	Wirecut Smooth	Limited	Throckley, Tyne & Wear
Cavendish Dorket Fireglow	2431	F1	S2	40	16	T2	Vertically Perforated	Wirecut Rusticated	Limited	Dorket Head, Nottinghamshire

* To BS EN 771-1



Cheddar Red

0610

Cheshire Weathered[†] ●

3541



Chester Red Blend

3596



Chillingham Blend

2802

Product Name	Code	Durability*	Active Soluble Salts*	Compressive Strength (≥ N/mm²)*	Water Absorption (≤ %)*	Size Tolerances Mean*	Configuration	Type & Texture	Special Shaped Brick Range	Factory/Location
Cheddar Red	0610	F2	S2	75	7	T2	Vertically Perforated	Wirecut Smooth	All	Cattybrook, Bristol
Cheshire Weathered	3541	F2	S2	50	12	T2	Vertically Perforated	Wirecut Smooth	Limited	Ravenhead, Lancashire
Chester Red Blend	3596	F2	S2	60	9	T2	Vertically Perforated	Wirecut Smooth	All	Ravenhead, Lancashire
Chillingham Blend	2802	F2	S2	60	10	T2	Vertically Perforated	Wirecut Rolled	Limited	Throckley, Tyne & Wear
Colonsay Red Rustic	2964	F2	S2	60	7	T2	Vertically Perforated	Wirecut Rusticated	Limited	Chesterton, Staffordshire
Colonsay Red Wirecut	2806	F2	S2	60	10	T2	Vertically Perforated	Wirecut Dragfaced	Limited	Throckley, Tyne & Wear
Deva Red	0526	F2	S2	60	10	T2	Vertically Perforated	Wirecut Smooth	All	Nostell, West Yorkshire

* To BS EN 771-1

● also available in 73mm

† Contains 5% black and 5% white in blend

Project: Pavilion, Lancashire Cricket Club, Manchester
Architect: BDP Manchester
Product: Chester Red Blend





Colonsay Red Rustic

2964



Colonsay Red Wirecut

2806



Deva Red

0526

Project: Church, Stevenage, Hertfordshire
Architect: S & C Molina
Product: Dorking Red





Dorking Multi

4102



Dorking Red

4125



Dornoch Red Rustic

2966



Earlston Sunset Multi

3583

Product Name	Code	Durability*	Active Soluble Salts*	Compressive Strength (≥ N/mm²)*	Water Absorption (≤%)*	Size Tolerances Mean*	Configuration	Type & Texture	Special Shaped Brick Range	Factory/Location
Dorking Multi	4102	F2	S2	40	12	T2	Vertically Perforated	Wirecut Sandfaced	All	South Holmwood, Surrey
Dorking Red	4125	F2	S2	40	12	T2	Vertically Perforated	Wirecut Sandfaced	All	South Holmwood, Surrey
Dornoch Red Rustic	2966	F2	S2	60	7	T2	Vertically Perforated	Wirecut Rusticated	Limited	Chesterton, Staffordshire
Earlston Sunset Multi	3583	F2	S2	60	9	T2	Vertically Perforated	Wirecut Dragfaced	Limited	Ravenhead, Lancashire

* To BS EN 771-1

Project: Wedgwood Museum & Visitor Centre, Barlaston, Staffordshire

Architect: Hulme Upright Manning

Products: Etruria Mixture & Staffordshire Slate Blue Smooth





Etruria Mixture

2905



Georgian Red Blend

0266



Grainger Antique

2769



Grainger Autumn

2770



Grampian Red

2965



Grampian Red Mixture

2967



Hadrian Red

2709

Product Name	Code	Durability*	Active Soluble Salts*	Compressive Strength (≥ N/mm²)*	Water Absorption (≤%)*	Size Tolerances Mean*	Configuration	Type & Texture	Special Shaped Brick Range	Factory/Location
Etruria Mixture	2905	F2	S2	60	7	T2	Vertically Perforated	Wirecut Dragfaced	Limited	Chesterton, Staffordshire
Georgian Red Blend	0266	F2	S2	35	12	T2	Vertically Perforated	Wirecut Rusticated	Limited	Aldridge, West Midlands
Grainger Antique	2769	F2	S2	60	10	T2	Vertically Perforated	Wirecut Rolled	Limited	Throckley, Tyne & Wear
Grainger Autumn	2770	F2	S2	60	10	T2	Vertically Perforated	Wirecut Rolled	Limited	Throckley, Tyne & Wear
Grampian Red	2965	F2	S2	60	7	T2	Vertically Perforated	Wirecut Rolled	Limited	Chesterton, Staffordshire
Grampian Red Mixture	2967	F2	S2	60	7	T2	Vertically Perforated	Wirecut Rolled	Limited	Chesterton, Staffordshire
Hadrian Red	2709	F2	S2	60	10	T2	Vertically Perforated	Wirecut Rolled	Limited	Throckley, Tyne & Wear

* To BS EN 771-1



Hanchurch Mixture

2922



Hardwicke Lenton Dark Multi

2435



Hardwicke Oakham Blend

2478



Hardwicke Sherwood Blaze

2417



Hardwicke Welbeck Autumn Antique

2426



Hardwicke Welbeck Red Mixture

2423

Product Name	Code	Durability*	Active Soluble Salts*	Compressive Strength (≥ N/mm²)*	Water Absorption (≤ %)*	Size Tolerances Mean*	Configuration	Type & Texture	Special Shaped Brick Range	Factory/Location
Hanchurch Mixture	2922	F2	S2	60	7	T2	Vertically Perforated	Wirecut Dragfaced	Limited	Chesterton, Staffordshire
Hardwicke Lenton Dark Multi	2435	F2	S2	40	16	T2	Vertically Perforated	Wirecut Rolled	Limited	Dorket Head, Nottinghamshire
Hardwicke Oakham Blend	2478	F2	S2	40	16	T2	Vertically Perforated	Wirecut Rolled	Limited	Dorket Head, Nottinghamshire
Hardwicke Sherwood Blaze	2417	F2	S2	40	16	T2	Vertically Perforated	Wirecut Rolled	Limited	Dorket Head, Nottinghamshire
Hardwicke Welbeck Autumn Antique	2426	F2	S2	40	16	T2	Vertically Perforated	Wirecut Rolled	Limited	Dorket Head, Nottinghamshire
Hardwicke Welbeck Red Mixture	2423	F2	S2	40	16	T2	Vertically Perforated	Wirecut Rolled	Limited	Dorket Head, Nottinghamshire
Hardwicke Welbeck Village Blend	2413	F2	S2	40	16	T2	Vertically Perforated	Wirecut Rolled	Limited	Dorket Head, Nottinghamshire
Hearted Red Rustic	3516	F2	S2	60	9	T2	Vertically Perforated	Wirecut Dragfaced	Limited	Ravenhead, Lancashire
Himley Mixed Russet Original	0335	F2	S2	65	9	T2	Vertically Perforated	Wirecut Dragfaced	All	Atlas, West Midlands
Himley Worcestershire Mixture	0317	F2	S2	65	9	T2	Vertically Perforated	Wirecut Rolled	Limited	Atlas, West Midlands

* To BS EN 771-1



Hardwicke Welbeck Village Blend

2413

Project: Private Housing, Port Sunlight, Merseyside
Developer: Redrow
Product: Hardwicke Welbeck Village Blend



Hearted Red Rustic

3516



Himley Mixed Russet Original

0335



Himley Worcestershire Mixture

0317



Holbrook Multi Red Smooth

4151



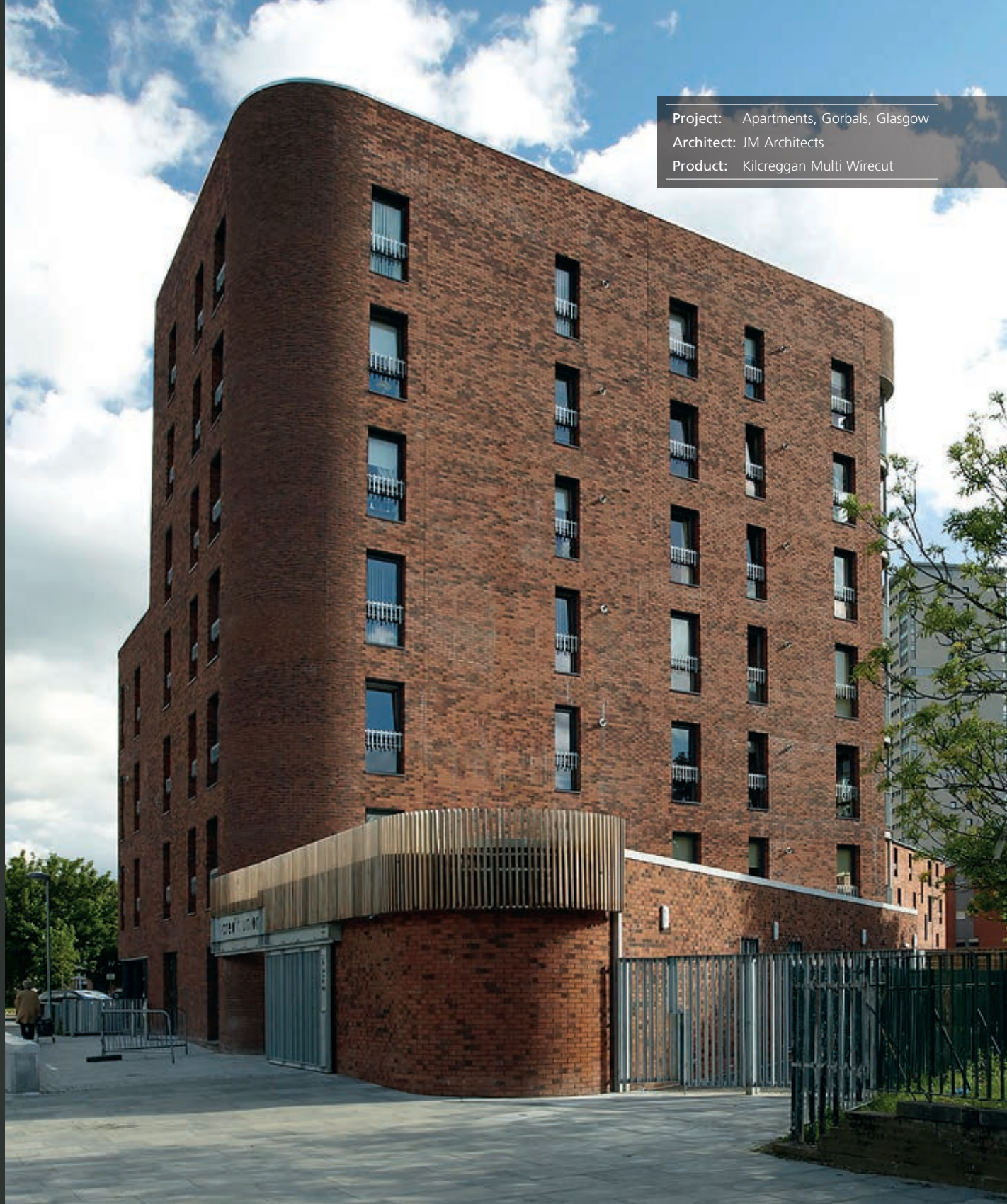
Holbrook Smooth Red

4122



Hollington Blend

2916



Project: Apartments, Gorbals, Glasgow
Architect: JM Architects
Product: Kilcreggan Multi Wirecut



Holmwood Natural

4157



Kilcreggan Multi Wirecut

2767



Macon Multi Blend

2756



Madeley Mixture ●

0350



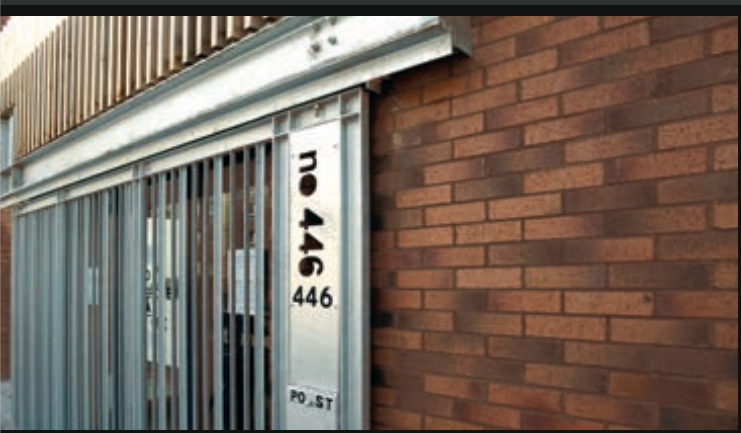
Manorial Mixture

2933



Manorial Red

2902



Product Name	Code	Durability*	Active Soluble Salts*	Compressive Strength (\geq N/mm ²)*	Water Absorption (\leq %)*	Size Tolerances Mean*	Configuration	Type & Texture	Special Shaped Brick Range	Factory/Location
Holbrook Multi Red Smooth	4151	F2	S2	40	12	T2	Vertically Perforated	Wirecut Smooth	All	South Holmwood, Surrey
Holbrook Smooth Red	4122	F2	S2	40	12	T2	Vertically Perforated	Wirecut Smooth	All	South Holmwood, Surrey
Hollington Blend	2916	F2	S2	60	7	T2	Vertically Perforated	Wirecut Dragfaced	Limited	Chesterton, Staffordshire
Holmwood Natural	4157	F2	S2	40	12	T2	Vertically Perforated	Wirecut Sandfaced	All	South Holmwood, Surrey
Kilcreggan Multi Wirecut	2767	F2	S2	60	10	T2	Vertically Perforated	Wirecut Dragfaced	All	Throckley, Tyne & Wear
Macon Multi Blend	2756	F2	S2	60	10	T2	Vertically Perforated	Wirecut Dragfaced	All	Throckley, Tyne & Wear
Madeley Mixture	0350	F2	S2	55	12	T2	Vertically Perforated	Wirecut Dragfaced	Limited	Aldridge, West Midlands
Manorial Mixture	2933	F2	S2	60	7	T2	Vertically Perforated	Wirecut Rusticated	All	Chesterton, Staffordshire
Manorial Red	2902	F2	S2	60	7	T2	Vertically Perforated	Wirecut Rusticated	Limited	Chesterton, Staffordshire

* To BS EN 771-1

● also available in 73mm



Project: School, Upton, Northamptonshire
Architect: Jonson Design Partnership
Product: Melton Antique Blend

Bespoke Blends

If you have a specific requirement involving wirecut bricks that our standard range does not meet, Ibstock now offers a bespoke brick blending service, supplying a blend of bricks of your choice direct from the factory that would not involve blending on site. This is ideal for matching up existing brickwork, blending with adjacent buildings or creating your own bespoke blend to give your project its own individuality. For more information contact your local sales office on 0844 800 4575 or visit our website and use the brick blending app www.ibstock.com/bespokeblends.



Melton Antique Blend

0578



Melton Blend

0573



Mercia Antique

0368



Mercia Orange

2974



Mercia Orange Multi

0367



Mixed Red Textured

2703



Monaco Royale

3555



Morpeth Blend

2804

Product Name	Code	Durability*	Active Soluble Salts*	Compressive Strength (≥ N/mm²)*	Water Absorption (≤%)*	Size Tolerances Mean*	Configuration	Type & Texture	Special Shaped Brick Range	Factory/Location
Melton Antique Blend	0578	F2	S2	60	10	T2	Vertically Perforated	Wirecut Rusticated	All	Nostell, West Yorkshire
Melton Blend	0573	F2	S2	60	10	T2	Vertically Perforated	Wirecut Rusticated	All	Nostell, West Yorkshire
Mercia Antique	0368	F2	S2	60	9	T2	Vertically Perforated	Wirecut Rolled	Limited	Atlas, West Midlands
Mercia Orange	2974	F2	S2	60	7	T2	Vertically Perforated	Wirecut Rolled	Limited	Chesterton, Staffordshire
Mercia Orange Multi	0367	F2	S2	60	9	T2	Vertically Perforated	Wirecut Rolled	Limited	Atlas, West Midlands
Mixed Red Textured	2703	F2	S2	60	10	T2	Vertically Perforated	Wirecut Dragfaced	Limited	Throckley, Tyne & Wear
Monaco Royale	3555	F2	S2	60	9	T2	Vertically Perforated	Wirecut Rolled	Limited	Ravenhead, Lancashire
Morpeth Blend	2804	F2	S2	60	6	T2	Vertically Perforated	Wirecut Rolled	Limited	Throckley, Tyne & Wear

* To BS EN 771-1

Project: Police Station, Cardiff, South Glamorgan
Architect: Capita Percy Thomas
Product: Multi Red Smooth





Multi Red Smooth



2934



New Burntwood Red Rustic ●



0269



Oakleigh Red Blend



3527



Oldcott Rustic



3532



Old Dublin Brindle



3515

Product Name	Code	Durability*	Active Soluble Salts*	Compressive Strength (≥ N/mm²)*	Water Absorption (≤ %)*	Size Tolerances Mean*	Configuration	Type & Texture	Special Shaped Brick Range	Factory/Location
Multi Red Smooth	2934	F2	S2	60	7	T2	Vertically Perforated	Wirecut Smooth	All	Chesterton, Staffordshire
New Burntwood Red Rustic	0269	F2	S2	35	12	T2	Vertically Perforated	Wirecut Rusticated	Limited	Aldridge, West Midlands
Oakleigh Red Blend	3527	F2	S2	60	9	T2	Vertically Perforated	Wirecut Rolled	Limited	Ravenhead, Lancashire
Oldcott Rustic	3532	F2	S2	50	12	T2	Vertically Perforated	Wirecut Dragfaced	Limited	Ravenhead, Lancashire
Old Dublin Brindle	3515	F2	S2	60	9	T2	Vertically Perforated	Wirecut Dragfaced	Limited	Ravenhead, Lancashire

* To BS EN 771-1

● also available in 73mm

Project: Apartments, Hinckley, Leicestershire
Developer: Barratt Homes
Product: Priory Weathered Red





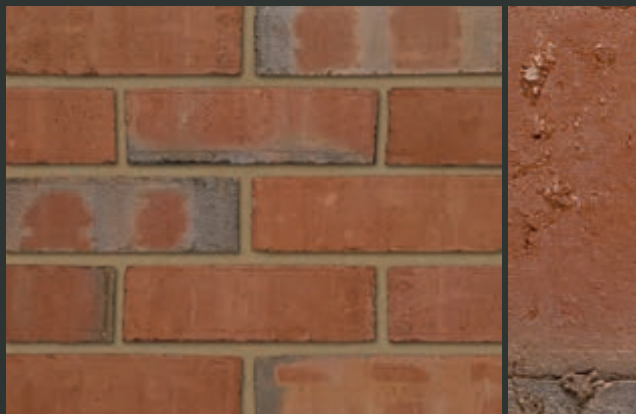
Ormonde Antique Blend

3518



Priory Red

0584



Priory Red Multi

0589



Priory Weathered Red ●

0585



Ravenhead Red Rustic ●

3502

Product Name	Code	Durability*	Active Soluble Salts*	Compressive Strength (\geq N/mm ²)*	Water Absorption (\leq %)*	Size Tolerances Mean*	Configuration	Type & Texture	Special Shaped Brick Range	Factory/Location
Ormonde Antique Blend	3518	F2	S2	50	12	T2	Vertically Perforated	Wirecut Rolled	Limited	Ravenhead, Lancashire
Priory Red	0584	F2	S2	60	10	T2	Vertically Perforated	Wirecut Smooth	All	Nostell, West Yorkshire
Priory Red Multi	0589	F2	S2	60	10	T2	Vertically Perforated	Wirecut Smooth	All	Nostell, West Yorkshire
Priory Weathered Red	0585	F2	S2	60	10	T2	Vertically Perforated	Wirecut Smooth	All	Nostell, West Yorkshire
Ravenhead Red Rustic	3502	F2	S2	60	9	T2	Vertically Perforated	Wirecut Dragfaced	Limited	Ravenhead, Lancashire

* To BS EN 771-1

● also available in 73mm

Project: Apartments, Smethwick, West Midlands
Architect: K4 Architects
Products: Ravenhead Red Smooth & Staffordshire Blue Brindle Smooth





Ravenhead Red Smooth ● ■



3501



Reigate Medium Multi



4145



Reigate Purple



4148



Roughdales Red Multi Rustic ●



3579

Product Name	Code	Durability*	Active Soluble Salts*	Compressive Strength (≥ N/mm²)*	Water Absorption (≤%)*	Size Tolerances Mean*	Configuration	Type & Texture	Special Shaped Brick Range	Factory/Location
Ravenhead Red Smooth	3501	F2	S2	60	9	T2	Vertically Perforated	Wirecut Smooth	All	Ravenhead, Lancashire
Reigate Medium Multi	4145	F2	S2	40	12	T2	Vertically Perforated	Wirecut Sandfaced	Limited	South Holmwood, Surrey
Reigate Purple	4148	F2	S2	40	12	T2	Vertically Perforated	Wirecut Sandfaced	Limited	South Holmwood, Surrey
Roughdales Red Multi Rustic	3579	F2	S2	60	9	T2	Vertically Perforated	Wirecut Dragfaced	Limited	Ravenhead, Lancashire

* To BS EN 771-1

● also available in 73mm ■ also available in 75mm



Ruskin Red 73mm

0256



Shireoak Russet

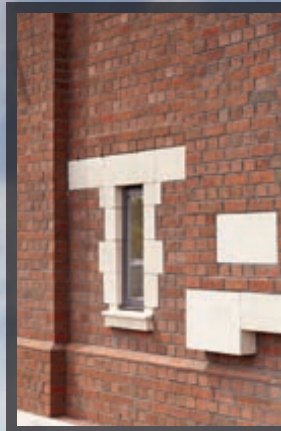
0085



Smooth Village Mixture

3536

Project: Community Centre, Newport, South Wales
Architect: Willdig Lammie Partnership
Product: Staffordshire Multi Rustic





Staffordshire Georgian

0287



Staffordshire Multi Rustic ●

0289



Staffordshire Smooth ●

0288



Stratford Red Dragface

0334



Stratford Red Rustic

0333



Surrey County Red

4132

Product Name	Code	Durability*	Active Soluble Salts*	Compressive Strength (≥ N/mm²)*	Water Absorption (≤ %)*	Size Tolerances Mean*	Configuration	Type & Texture	Special Shaped Brick Range	Factory/Location
Ruskin Red 73mm	0256	F2	S2	55	12	T2	Vertically Perforated	Wirecut Smooth	Limited	Aldridge, West Midlands
Shireoak Russet	0085	F2	S2	35	12	T2	Vertically Perforated	Wirecut Rusticated	Limited	Aldridge, West Midlands
Smooth Village Mixture	3536	F2	S2	50	12	T2	Vertically Perforated	Wirecut Smooth	Limited	Ravenhead, Lancashire
Staffordshire Georgian	0287	F2	S2	35	12	T2	Vertically Perforated	Wirecut Rusticated	Limited	Aldridge, West Midlands
Staffordshire Multi Rustic	0289	F2	S2	35	12	T2	Vertically Perforated	Wirecut Rusticated	Limited	Aldridge, West Midlands
Staffordshire Smooth	0288	F2	S2	55	12	T2	Vertically Perforated	Wirecut Smooth	All	Aldridge, West Midlands
Stratford Red Dragface	0334	F2	S2	60	9	T2	Vertically Perforated	Wirecut Dragfaced	Limited	Atlas, West Midlands
Stratford Red Rustic	0333	F2	S2	60	9	T2	Vertically Perforated	Wirecut Rusticated	Limited	Atlas, West Midlands
Surrey County Red	4132	F2	S2	40	12	T2	Vertically Perforated	Wirecut Rolled	Limited	South Holmwood, Surrey

* To BS EN 771-1

● also available in 73mm

Project: Housing, Motherwell, North Lanarkshire

Architect: Collective Architecture

Products: Throckley Red Rustic, Atlas Smooth Red, Multi Grey Rustic & Staffordshire Blue Brindle Smooth





Surrey Light Multi

4143



Surrey Orange

4131



Surrey Red Multi

4133



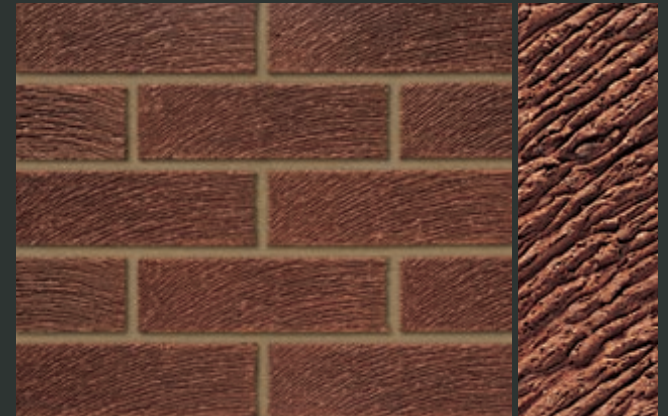
Surrey Russet

4136



Throckley Old English

2724



Throckley Red Rustic

2702



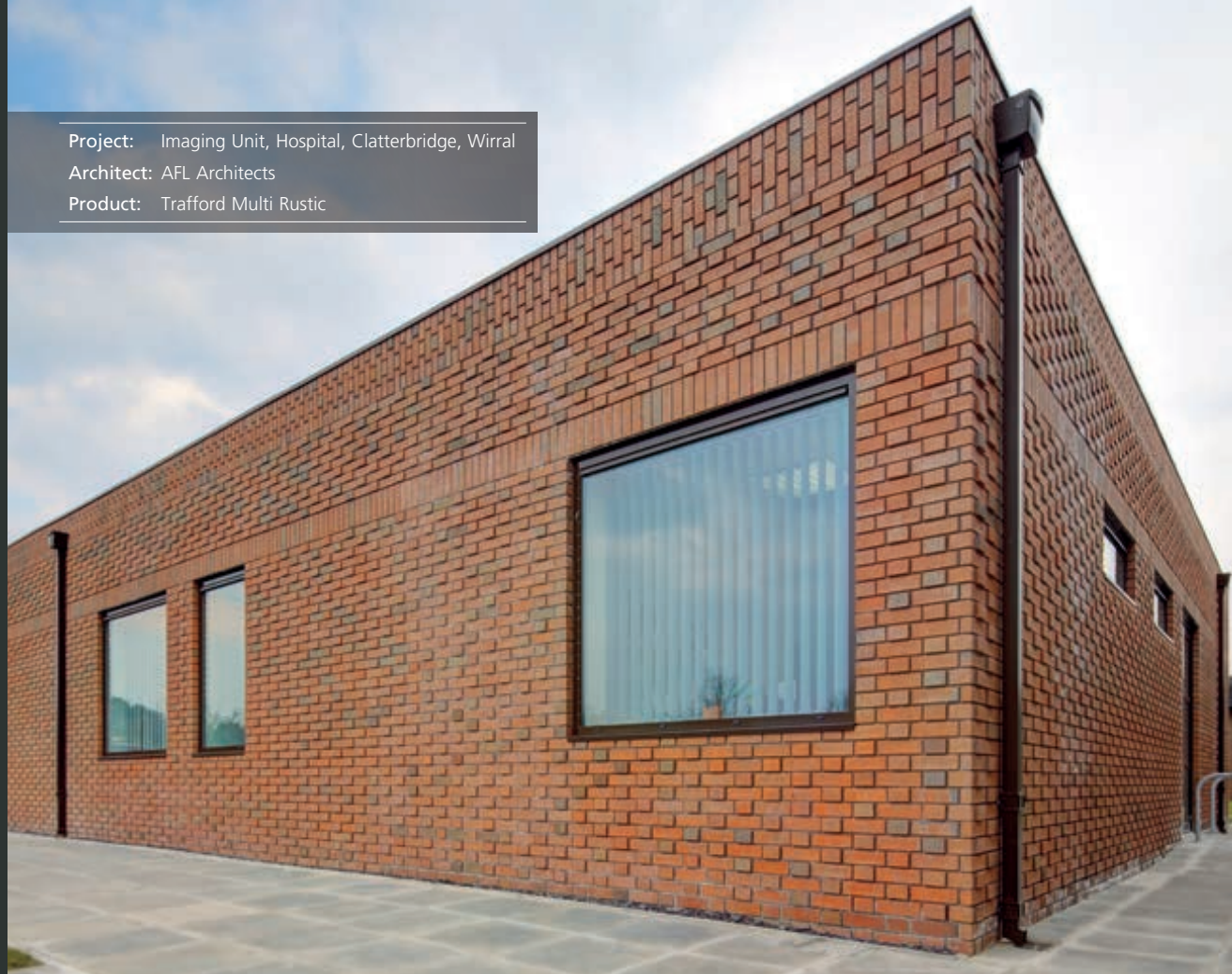
Throckley Smooth Red

2730

Product Name	Code	Durability*	Active Soluble Salts*	Compressive Strength (≥ N/mm²)*	Water Absorption (≤ %)*	Size Tolerances Mean*	Configuration	Type & Texture	Special Shaped Brick Range	Factory/Location
Surrey Light Multi	4143	F2	S2	40	12	T2	Vertically Perforated	Wirecut Rolled	Limited	South Holmwood, Surrey
Surrey Orange	4131	F2	S2	40	12	T2	Vertically Perforated	Wirecut Rolled	Limited	South Holmwood, Surrey
Surrey Red Multi	4133	F2	S2	40	12	T2	Vertically Perforated	Wirecut Rolled	All	South Holmwood, Surrey
Surrey Russet	4136	F2	S2	40	12	T2	Vertically Perforated	Wirecut Rolled	All	South Holmwood, Surrey
Throckley Old English	2724	F2	S2	60	10	T2	Vertically Perforated	Wirecut Dragfaced	Limited	Throckley, Tyne & Wear
Throckley Red Rustic	2702	F2	S2	60	10	T2	Vertically Perforated	Wirecut Rusticated	All	Throckley, Tyne & Wear
Throckley Smooth Red	2730	F2	S2	60	10	T2	Vertically Perforated	Wirecut Smooth	All	Throckley, Tyne & Wear

* To BS EN 771-1

Project: Imaging Unit, Hospital, Clatterbridge, Wirral
Architect: AFL Architects
Product: Trafford Multi Rustic



Tradesman Cheviot

0385



Tradesman Claygate Red Multi

0329



Tradesman Rustic Blend ●

0383



Tradesman Sandfaced Red Multi

0384



Tradesman Tudor Regent

0323

● also available in 73mm



Trafford Multi Rustic

3576



Tyne Red Bark

2701



Westbrick Light Multi

3581



Westbrick Red Purple Multi

0662



Windsor

2407



Worsley Weathered

3509



Wylam Olde Blend

2800

Product Name	Code	Durability*	Active Soluble Salts*	Compressive Strength (≥ N/mm²)*	Water Absorption (≤%)*	Size Tolerances Mean*	Configuration	Type & Texture	Special Shaped Brick Range	Factory/Location
Tradesman Cheviot	0385	F2	S2	65	9	T2	Vertically Perforated	Wirecut Rolled	Limited	Atlas, West Midlands
Tradesman Claygate Red Multi	0329	F2	S2	65	9	T2	Vertically Perforated	Wirecut Rolled	Limited	Atlas, West Midlands
Tradesman Rustic Blend	0383	F2	S2	65	9	T2	Vertically Perforated	Wirecut Rolled	Limited	Atlas, West Midlands
Tradesman Sandfaced Red Multi	0384	F2	S2	65	9	T2	Vertically Perforated	Wirecut Sandfaced	Limited	Atlas, West Midlands
Tradesman Tudor Regent	0323	F2	S2	65	9	T2	Vertically Perforated	Wirecut Rolled	Limited	Atlas, West Midlands
Trafford Multi Rustic	3576	F2	S2	50	12	T2	Vertically Perforated	Wirecut Dragfaced	Limited	Ravenhead, Lancashire
Tyne Red Bark	2701	F2	S2	60	10	T2	Vertically Perforated	Wirecut Rusticated	Limited	Throckley, Tyne & Wear
Westbrick Light Multi	3581	F2	S2	60	9	T2	Vertically Perforated	Wirecut Dragfaced	Limited	Ravenhead, Lancashire
Westbrick Red Purple Multi	0662	F2	S2	50	10	T2	Vertically Perforated	Wirecut Dragfaced	All	Cattybrook, Bristol
Windsor	2407	F2	S2	40	16	T2	Vertically Perforated	Wirecut Sandfaced	Limited	Dorket Head, Nottinghamshire
Worsley Weathered	3509	F2	S2	50	12	T2	Vertically Perforated	Wirecut Rolled	Limited	Ravenhead, Lancashire
Wylam Olde Blend	2800	F2	S2	60	10	T2	Vertically Perforated	Wirecut Rolled	Limited	Throckley, Tyne & Wear

* To BS EN 771-1