



## Universal Pipe Bracket

### SSVU

The Rainline pipe bracket has been re-designed to simplify selection, ordering and installation.

Rainwater drainage pipes are usually secured to a wall using either a screw-to-wall bracket or a drive-in bracket with a spike. Choice can be influenced by the construction type of the building, installer preference or regional conventions.

The new SSVU Universal Pipe Bracket differs from previous Rainline brackets as it can be used for screw to wall applications or can be easily modified to accommodate a Rainline SST spike for drive-in applications.

### FINISHES:

HB Polyester Coated-  
Silver Metallic,  
Anthracite Metallic,  
Copper Metallic, Black,  
Antique White, Dark Grey,  
Brown, Tile Red, Dark Red,  
Pine Green, Coffee Brown

### SIZES:

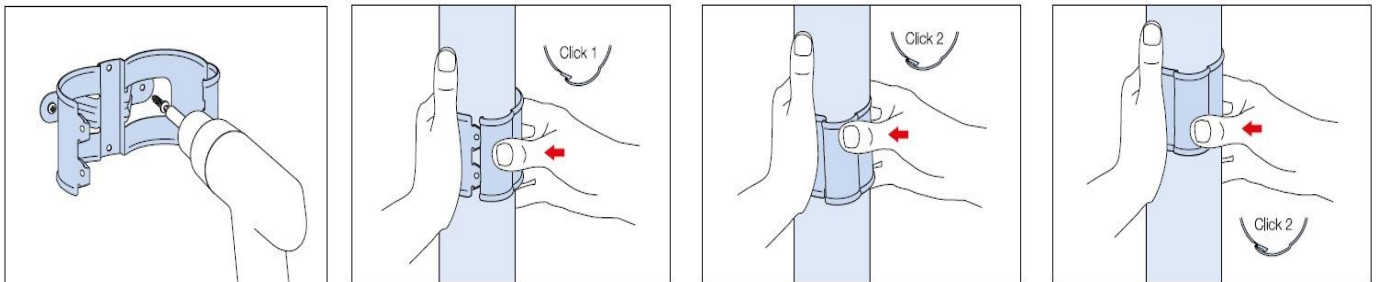
75mm, 87mm, 100mm, 120mm



## INSTALLING THE SSVU

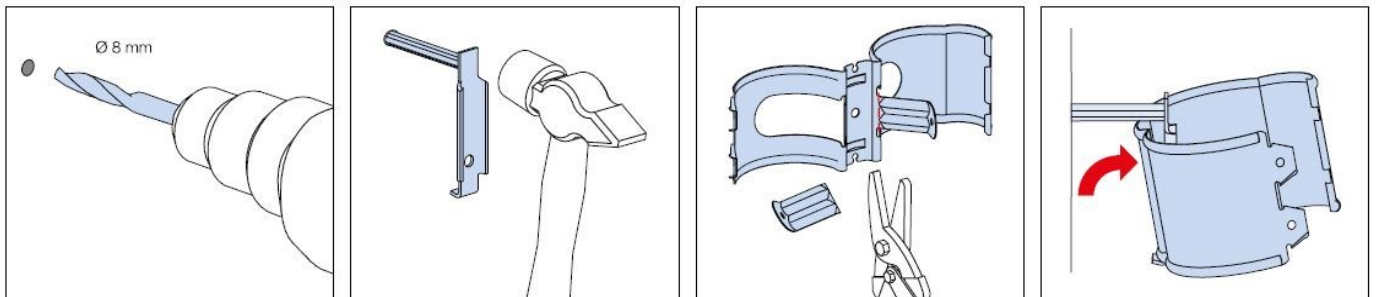
Pipe brackets should be installed at 1.5m centres. The highest pipe bracket should be installed 150mm from the offset or hopper head at the top of the pipe stack. A spirit level or plummet line can be used to align the other brackets.

SSVU pipe brackets have built in 'legs' which can be adjusted to provide a suitable spacing from the wall. The legs have pre-drilled screw holes to secure to the wall and a easy click lock mechanism to hold the pipe in place.



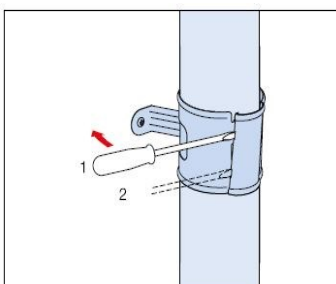
## INSTALLING THE SSVU WITH AN SST SPIKE

SSVU pipe brackets can be adapted to be used as a drive in bracket by simply removing the spacer legs and clipping the pipe holder to an SST drive in spike. SST Spikes are available in 125mm, 175mm, 250mm and 300mm lengths and should be ordered separately.



## ADJUSTING THE SSVU

The bracket's easy click mechanism can be unlocked to dismount and relocate if required.



The SSVU is not available in unpainted Rainline finishes- SV or SVHA brackets are required.