

MINIMAX®

The performance of an underground container, the creativeness of Plastic Omnium.

The underground container is an optimum solution for voluntary collection.

Installed in place of large volume receptacles or surface containers, **it improves quality of life** by reducing visual and odour pollution. It significantly decreases the risk of fire and offers permanent access to all users, including those with reduced mobility.

Specially designed for town centers, its small dimensions **leave more room for pedestrians**.

It makes selective collection easier through its attractive and practical design (it can be placed, for example, at the foot of an accommodation block).

It also considerably improves sorting performances and helps to control costs (less frequent collections by a single operator).

Plastic Omnium presents the new MINIMAX® range: all the benefits of underground containers, with a next generation design, reliability and functionalities.

Built to withstand anything, MINIMAX® is made to last: the high quality of its steel plate welds and the plates' hot-dip galvanisation ensure maximum mechanical and corrosion resistance.

Easy emptying

When opened, the special shape of the MINIMAX® flaps makes the emptying of waste easy: none of the waste is retained or obstructed.

Easy installation

The upper double metal frame of the MINIMAX® concrete shaft casing allows perfect adjustment, facilitates civil engineering works and reduces their cost.

Maximised filling

Thanks to the centered positioning of the bank on the body, MINIMAX® ensures a more even distribution of waste and therefore a maximum filling rate (90 to 95%).

A high level of safety

During emptying, the MINIMAX® safety fence is unique in making the safety perimeter visible from a distance, to protect pedestrians.

Reduced dimensions

Only the MINIMAX® concrete shaft casing has a small enough cross-section to allow 3 containers to be installed within a single standard parking space.



MINIMAX®

Technical specifications

Concrete shaft casing and containers

	3 m³	4 m³	5 m³
Shaft casing height (mm)	1710	2270	2830
Total underground height (mm)	1875	2435	2995
Total shaft casing + frame height (mm)	1885	2445	3005
Shaft casing cross-section (mm)	1665	1665	1665
Shaft casing weight (kg)	3400	4300	5700
Container height (mm)	1710	2270	2830
Container cross-section (mm)	1340	1340	1340
Container + bank weight (kg)	580	680	780

Throwing pillars

	OM 60 L Single drum	OM 60 L Double drum	OM 80 L Single drum	OM 80 L Double drum	OM 110 L Single drum	OM 110 L Double drum	Glass Newspapers magazines
Standard	Throwing pillar - mm	994	994	994	994	994	994
	Depth - mm	700	700	700	700	700	700
	Width - mm	550	550	550	700	900	550
Prima Linea®	Throwing pillar - mm	1155	1155	1155	1155	1155	1155
	Depth - mm	670	670	670	670	670	670
	Width - mm	717	717	797	797	997	717
Marine	Throwing pillar - mm						1120
	Depth - mm						485
	Width - mm						450

Underground containers for voluntary collection

MINIMAX® 3, 4 and 5 m³

Minimum dimensions,
maximum storage



ECOSOURCING
THROW LESS. SORT BETTER. SAVE MONEY

PLASTIC OMNIUM
SYSTÈMES URBAINS

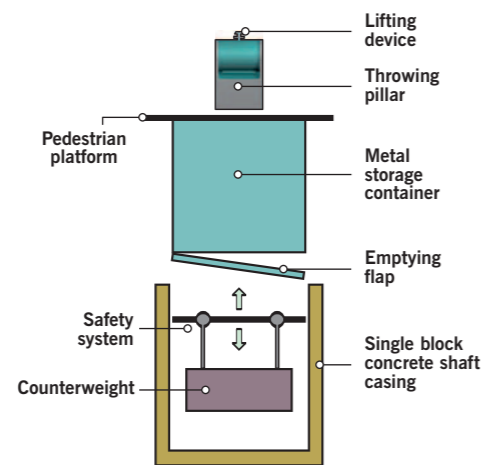
63 rue Edouard Colonne - 92027 Nanterre
Tél. 00 33 (0) 1 40 87 31 00 - Fax 00 33 (0) 1 47 39 32 18
<http://www.plasticomnium.com/environnement>

© experience 2006 Ref.: MINIMAX - INT-1100V1 - Plastic Omnium reserves the right to modify, without notice, the colours and technical specifications contained in this brochure. Printed on recycled paper.

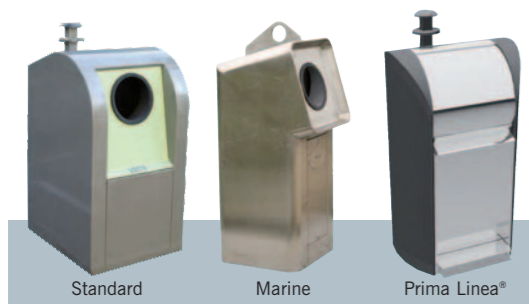
PLASTIC OMNIUM
SYSTÈMES URBAINS

MINIMAX[®]

in 8 major assets



Filling banks



The filling bank is positioned practically in the center to prevent instability on emptying. **Guaranteed filling rate: 95%.**

Its height ensures **easy access** for children and people with reduced mobility.

The throwing pillars are made from hot-dip galvanized steel 4 mm thick. An anti-graffiti and anti-UV coating provides **additional protection and easy cleaning**. An inspection flap with 2 locks is fitted on the front or the side. The standard colour is

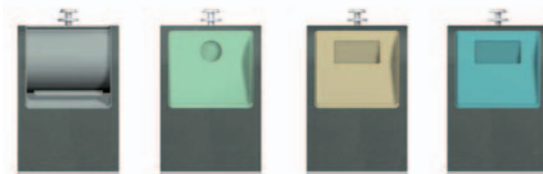
mid-grey, but **all the colours in the RAL range are available**. The filling side is painted in different colours to identify the waste collected.

The openings are also adapted to the materials:

- Household waste drum of 60L, 80L or 110L
- Round filling aperture for glass
- Rectangular filling aperture for packaging and newspapers/magazines

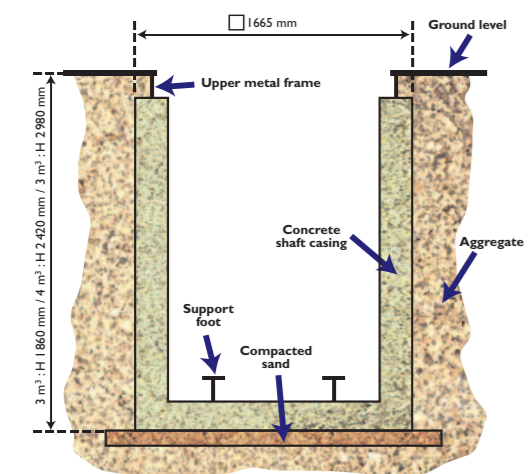
Options available:

- Soundproofing
- Fully secure double drum
- Customer personalisation zone

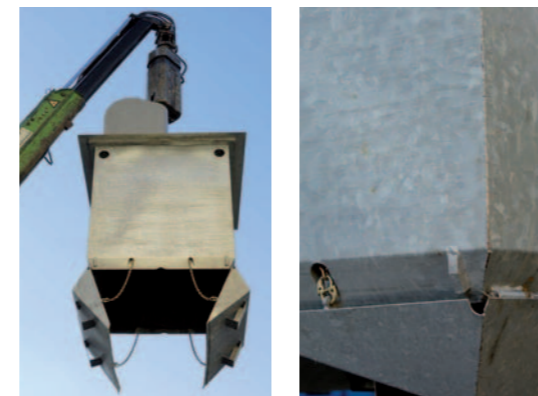


Concrete shaft casing

This casing, available in 3 sizes (3, 4 or 5 m³), is designed to prevent the penetration of surface water, guaranteeing its **watertightness for 15 years**. It may be fitted with additional support feet to install a smaller inner body.



Metal container



The body is made from hot-dip galvanised steel: it is fully assembled before being dipped in a galvanisation bath.

It is available in 3 sizes: 3, 4 and 5 m³. Its cross-section stays the same; only the height changes.

The opening flaps are fitted with a tank for residual liquids (60 litres). **The 90° opening allows complete emptying.**

Pedestrian platforms

The platform may extend beyond or be flushed with the container, to which it is attached.

In its standard version, it consists of 4 mm thick checker-plate steel, able to support 500kg/m². It has an anti-skid surface that is easy to clean.

A coverable version is available as an option to create, for example, a paving-stone, rubber or resin covering.



Safety systems

Three models available:

- Safety fence (offered as standard) which automatically moves into place on emptying. It lifts up when the container is removed and offers a protective barrier 90 cm high all around the pit (110 cm fence also available).

- A platform system that completely blocks off the concrete shaft casing during emptying operations.
- Platform with lock, at the top.

The systems (platform and fence) are actuated and held in position by counterweights. There are no springs or pneumatic cylinders.



MINIMAX[®]

is easy to install



1/ / Excavations: these are included in the civil engineering works, to be performed by a Public Works contractor.



2/ Positioning of shaft casing and fill: fill the hole with sand in several stages.



3/ Installation of the upper frame: the adjusting screws can be used to compensate for levelling faults and facilitate the civil engineering works.



4/ Installation of the metal container and its throwing pillar.



The safety systems are fitted by Plastic Omnium's own staff.

MINIMAX[®]

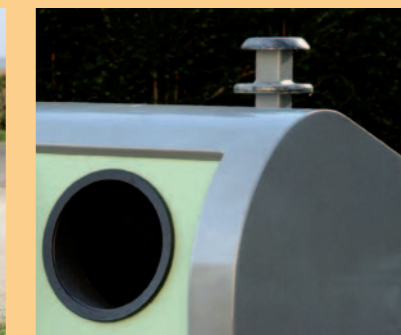
is compatible with all the usual lifting devices

4 lifting systems are available:

- single hook
- double hook
- triple hook
- Kinshofer mushroom



Single hook



Kinshofer mushroom



Emptying