

wedi's global innovation underneath PVC coverings:

wedi Solso

The shower board that's a little different





wedi *Solso*

The zero-alternative solution
for use underneath PVC.



The **shower floor system** for reliable use underneath PVC coverings

wedi is offering a floor-level shower system developed especially for PVC coverings and made from a highly close polystyrene expanded plastic slab. The innovative wedi Solso is the unrivalled shower floor system for wet areas in hospitals and private and public care facilities. wedi Solso easily holds high pressure point loads up to 2.5 N/mm², for example from wheelchairs or walking frames. At the same time, the whole system is considerably easier and quicker to install than other traditional building methods. The PVC covering in the case of wedi Solso can, in addition, also be connected quickly and absolutely waterproof to the drain fitting.

Where safety, wear resistance, stability and cost-efficiency are called for, wedi Solso is the alternative, yet zero-alternative, shower system for installation underneath PVC.



Absorbs high pressure point loads



PVC installed as a watertight connection to the drain



Barrier-free for care facilities



Laid in a reliable and time-saving fashion



Precise and evenly implemented slope



3 drain options: vertical, horizontal and fire stop

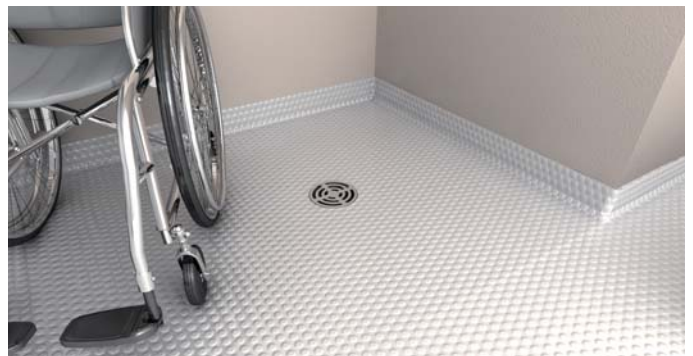
Systematically **stable**, effectively **strong**.

The **first** wedi shower floor
for PVC surfaces



wedi Solso is the reliable substructure for shower systems with PVC coverings. The base consists of a core of a highly close polystyrene expanded plastic slab and a special covering which is reinforced with glass fibre fabric. The system allows the PVC to be easily connected to the drainage system and is up to 100 % water-proof.

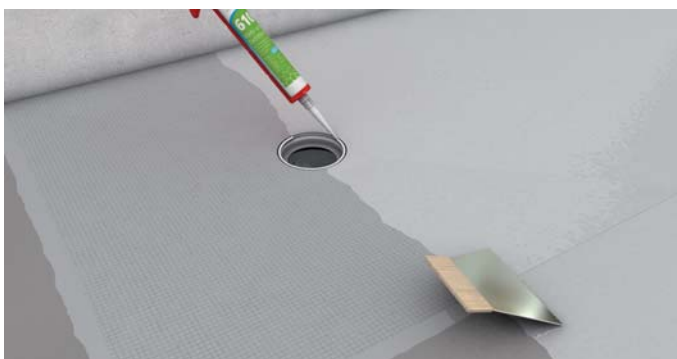
Extremely stable, even for high
point loads (2.5 N/mm²)



Because of its incredibly strong stability and ability to bear heavy loads, wedi Solso is suitable for very high pressure point loads. With 2.5 N/mm², this system enables e.g. trouble-free use of wheelchairs, Zimmer frames, etc., in hospital and care facility shower systems.



A time-saving and reliable
system solution



Due to the exactly measured gradient and the compatible wedi system components, the installation of wedi Solso is easy, quick and safe for the workman.

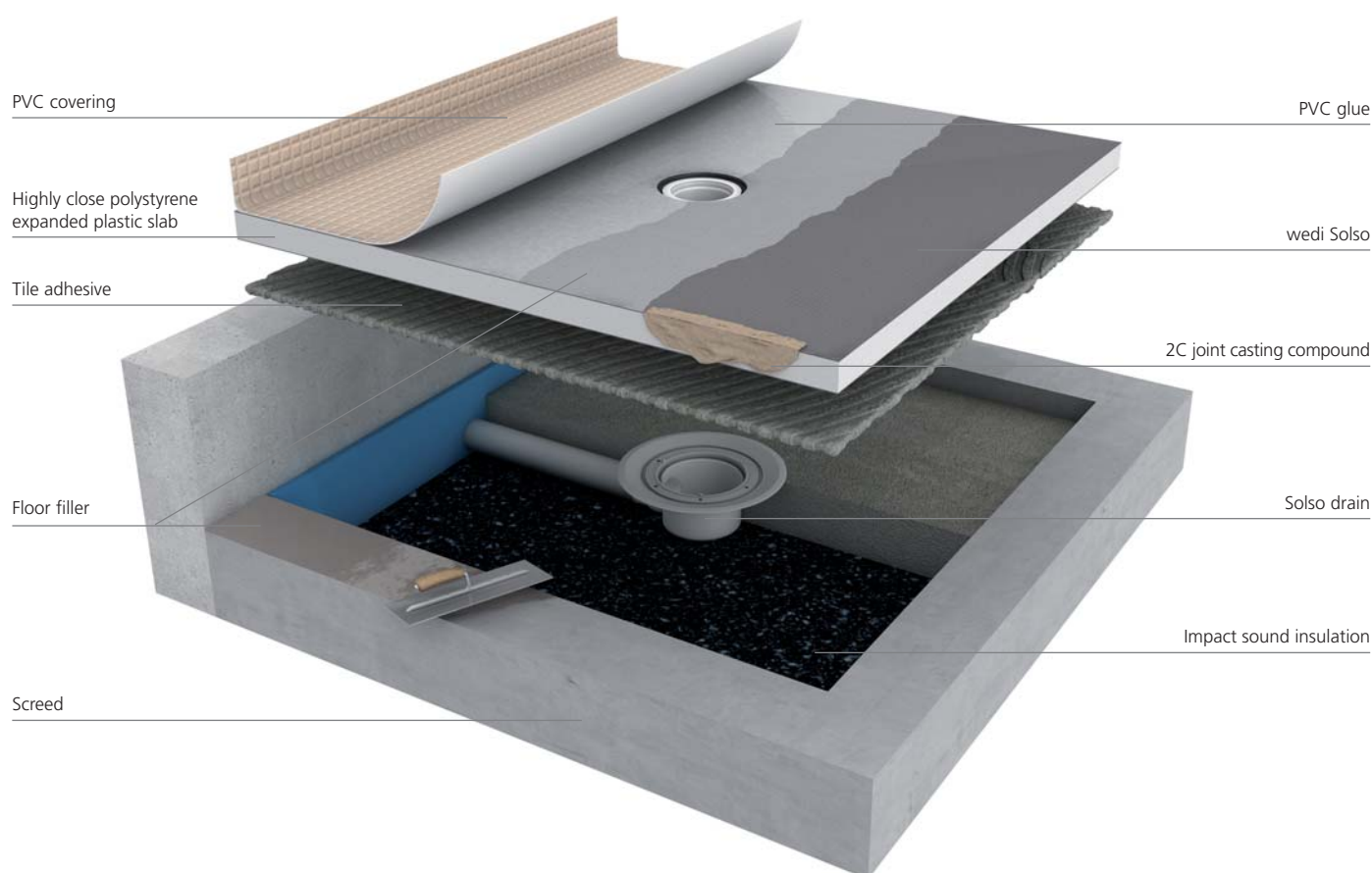
Quick to install and water-proof thanks
to **the integrated sealing level**



Thanks to the interplay between wedi 610 and the sealing which has already been integrated into the wedi Solso element in the factory, any water being pressed back (e.g. in the case of a blocked pipe) does not have a chance of getting under the PVC.

Technically **sophisticated**. Made for PVC coverings.

The entire wedi Solso sub-floor forms the perfect base for PVC surfaces in shower areas.



wedi Solso **drain options**



Technical data

Foam


Expanded polystyrene rigid foam core		
Maximum recommended compressive strength under service load		2.50 N/mm ²
Compressive strength at ≤ 2% long-term immersion in line with EN 13163		3.78 N/mm ²
Compressive strength at 10% compressive strain in line with EN 13163		6.47 N/mm ²
Thermal conductivity in line with EN 13164		0.05 W/mK
Bulk density in line with EN 1602		≥ 280 kg/m ³
Temperature limits		-20°C / +70°C
Fire behaviour in line with DIN 13501-1		E
Gas emissions		None

wedi Solso

Plate thickness (outer dimension) up to a shower size of 1200 × 1200 mm	40 mm
Residual indentation following constant loading (with PVC covering) in line with DIN EN 433	≤ 0.10 mm
Suitable for wheelchair loading	Yes
Minimum installation depth for horizontal installation	130 mm
Minimum installation depth for vertical installation	40 mm
Surface slope (from outer edge of Solso building board to outer edge of drain opening)	18 mm = ≥ 3%
Frame for holding stainless steel grate (fixed in the element)	Ø 120 mm
Stainless steel grate	Ø 115 mm

Item numbers and versions

wedi Solso

	Name	Length × Width × Thickness	Order no.
	wedi Solso	900 × 900 × 40 mm	07-37-38/172
	wedi Solso	1200 × 1200 × 40 mm	07-37-38/173
	wedi Solso vertical drain, DN 50, with fire stop		07-37-90/040
	wedi Solso vertical drain, DN 50, with fire stop, screwable		07-37-90/041
	wedi Solso vertical drain, DN 50		07-37-90/042
	wedi Solso vertical drain, DN 50, screwable		07-37-90/043
	wedi Solso horizontal drain, DN 50		07-37-90/044
	wedi Solso horizontal drain, DN 50, screwable		07-37-90/045



wedi building board systems



wedi floor-level showers



wedi design elements



wedi sealing and decoupling



wedi wellness projects



wedi system chemistry



wedi practical auxiliaries



wedi support



wedi Systems (UK) Ltd
Suite 23 Evans Business Centre
Dane Street · Rochdale OL12 6XB
Telephone +44 1706 647 333
Telefax +44 1706 759 819
info@wedi.co.uk · www.wedi.co.uk

wedi GmbH
Hollefeldstraße 51 · 48282 Emsdetten · Germany
Telephone +49 2572 156-0 · Fax +49 2572 156-133
info@wedi.de · www.wedi.eu