

Drain Couplings

- Easy to fit
- Simple and versatile
- Completely airtight and watertight connection
- Can be used to connect plain ended pipes
- Repair of existing pipe systems by replacing short sections of pipe
- An inexpensive option for unadopted (private) drainage pipes



CE
05

Flexseal Drain Couplings, sometimes referred to as couplers, are simple, easy to use drainage pipe connectors. Drain Couplings are designed to connect two pipes with the same or similar (within 10mm) outside diameter.

Drain Coupling are made from three component parts: one moulded EPDM rubber body and two stainless steel clamp bands, which when tightened create a secure connection.

These simple yet effective connectors can be tightened onto pipes using a nut driver and torque wrench, creating a permanent airtight and watertight seal in just seconds.

Example Application:

Drain Coupling connecting two pipes with the same or similar outside diameters.



Fit horizontally or vertically

for above or below ground applications



Drain Coupling for unadapted drainage applications

Unadopted Drainage Applications

Flexseal Drain Couplings are the tried and tested method for connecting unadopted or private drainage systems and with a range developed over 30 years, Flexseal has a Drain Coupling for almost any pipe configuration.

Applications include housing sites, private roads, industrial sites, agriculture land and more.



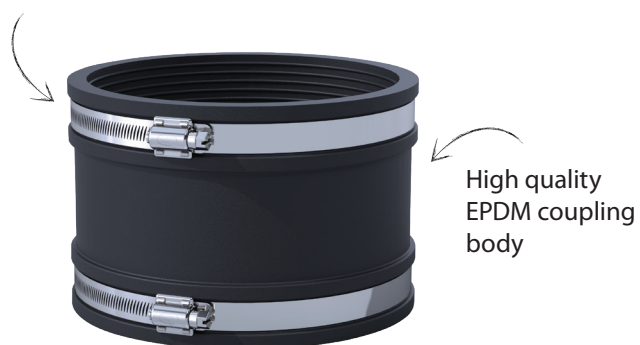
Adopted Drainage Applications

Adopted drainage systems are most commonly adopted by highway agencies, water companies or local authorities. Connections using flexible couplings are likely regulated under a specification such as at WIS 4-41-01 in the UK, which states that all adopted drainage systems must only be connected using Shear Banded Couplings. This is to ensure joint stability and sewer invert level is maintained.

For this reason, Drain Couplings are prohibited on adopted drainage systems and only Flexseal's Shear Banded Couplings should be used.



Strong stainless steel
clamp bands



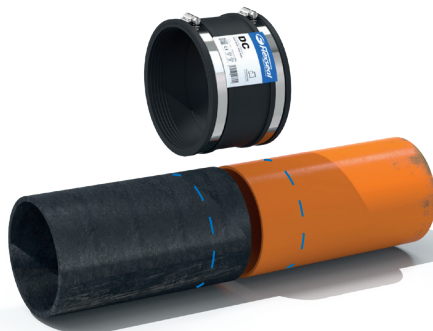
Product Code	DCXXX
Description	Flexseal Drain Coupling
Size Range	40 - 275mm
Material	EPDM Rubber 1.4301 (304) Stainless Steel <i>Couplings with a different material makeup are available on request.</i>
Temperature Range	-50°C to 80°C constant, 100°C intermittent
Jetting Resistance	180 bar
Pressure Rating	0.6bar, 8.70psi
Standards	BS EN 681-1:1995 BS EN 295-4:2013 BS EN 10088-2:1995

Product Code	Size (mm)	Torque	Maximum difference between pipes OD's (mm)
DC50	40 - 50	6Nm	10
DC65	50 - 65	6Nm	10
DC75	60 - 75	6Nm	10
DC95	80 - 95	6Nm	10
DC115	100 - 115	6Nm	10
DC125	110 - 125	6Nm	10
DC135	120 - 135	6Nm	10
DC150	135 - 150	6Nm	10
DC165	150 - 165	6Nm	10
DC175	160 - 175	6Nm	10
DC185	170 - 185	6Nm	10
DC195	180 - 195	6Nm	10
DC215	200 - 215	6Nm	10
DC225	210 - 225	6Nm	10
DC250	235 - 250	6Nm	10
DC265	250 - 265	13Nm	10
DC275	260 - 275	13Nm	10





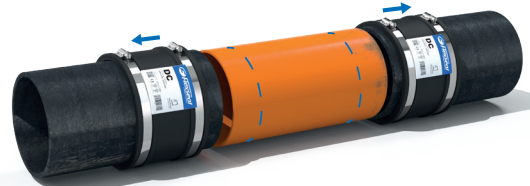
Installation



1. Mark both pipes, from the end to be connected, half the width of the coupling, less the required joint gap, which is usually 10mm.



2a. Slide the coupling fully over one of the pipes.



2b. If replacing a cut section of pipe, slide both couplings over each of the existing drain pipes.



3. Align the pipes and slide the coupling onto the other pipe, ensuring the coupling face and marked line are flush. Tighten this clamp band.



4. Position the remaining pipe, ensuring the coupling face and marked line are flush. Tighten this clamp band.



5. Tighten the clamp bands to the recommended torque.

Tamp the bedding under the pipe and re-tighten prior to backfilling.

General Information

Quality, Standards and Approvals

Flexseal has been certified by the British Standards Institution (BSI) as a company of assessed capability, with a quality management system which meets the requirements of BS EN ISO 9001:2015

Flexseal, part of the Fernco Group, are the leaders in wastewater connection innovation; utilising the most advanced methods and techniques for precision-manufactured products, all of which comply with or exceed relevant British and European standards to ensure reliability and sustainability.

Environment

Flexseal operate Environmental Management Systems which are certified to ISO 14001: 2004.

Supply

Flexseal are proud members of the Builders Merchants Federation (BMF). All Flexseal products are supplied through a national and global network of distribution and merchant partners. For stockist details, contact Flexseal.

Technical Support

Flexseal have a team of product experts on hand to support all customers with technical support and advice.

Contact Flexseal Technical Department:

Tel: +44 (0) 1226 344100

Email: technical@flexseal.co.uk

Enquiries

UK Sales:

Tel: +44 (0) 1226 340 888

Email: sales@flexseal.co.uk

International Sales:

Tel: +44 (0) 1226 344 105

Email: export.dept@flexseal.co.uk

