

Adaptor Couplings

- Provides a quick and efficient method of connecting pipes of different materials and outside diameters
- Reliable, tried and tested products
- Large variety of sizes for a multitude of pipe configurations



CE
05

Flexseal Adaptor Couplings, sometimes referred to as reducer couplings, are designed to connect unadopted drainage pipes with different outside diameters – connecting larger drainage pipes to smaller drainage pipes and vice versa.

Adaptor Couplings are made from three component parts: one stepped moulded EPDM rubber body with two different diameters on each side and two stainless steel clamp bands, which when tightened create a secure connection.

These simple yet effective connectors can be tightened onto pipes using a nut driver and torque wrench, creating a permanent airtight and watertight seal in just seconds.



Fit horizontally or vertically

for above or below ground applications



Strong stainless steel
clamp bands



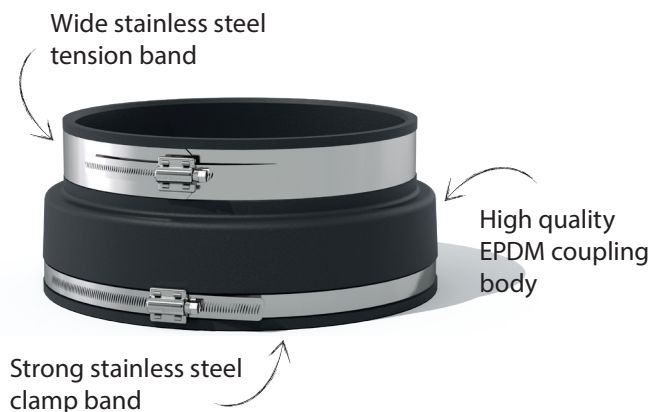
High quality
EPDM coupling
body

| | |
|--------------------|--|
| Product Code | ACXXXX |
| Description | Flexseal Adaptor Coupling |
| Size Range | 53-420 |
| Material | EPDM Rubber 1.4301 (304) Stainless Steel <i>Couplings with a different material makeup are available on request.</i> |
| Pressure Rating | 0.6bar, 8.70psi |
| Jetting Resistance | 180bar |
| Temperature Range | -50°C to 80°C constant, 100°C intermittent |
| Tightening Torque | AC633 - AC2756 - 6Nm AC9001 - AC4209 - 13Nm |
| Standards | BS EN 681-1:1995 BS EN 295-4:2013 BS EN 10088-2:1995 |

| Product Code | Size Range A (mm) | Size Range B (mm) | Tightening Torque |
|--------------|----------------------|----------------------|-------------------|
| AC633 | 53 - 63 | 40 - 50 | 6Nm |
| AC894 | 75 - 89 | 53 - 63 | 6Nm |
| AC1155 | 100 - 115 | 75 - 90 | 6Nm |
| AC1201 | 105 - 120 | 35 - 45 | 6Nm |
| AC1225 | 110 - 122 | 48 - 56 | 6Nm |
| AC1226 | 110 - 122 | 60 - 68 | 6Nm |
| AC1221 | 110 - 122 | 80 - 95 | 6Nm |
| AC5144 | 110 - 125 | 100 - 115 | 6Nm |
| AC1361 | 121 - 136 | 80 - 95 | 6Nm |
| AC1362 | 121 - 136 | 100 - 115 | 6Nm |
| AC4000 | 121 - 136 | 110 - 121 | 6Nm |
| AC1452 | 130 - 145 | 110 - 125 | 6Nm |
| AC1552 | 140 - 155 | 90 - 105 | 6Nm |
| AC1602 | 144 - 160 | 110 - 122 | 6Nm |
| AC1603 | 144 - 160 | 121 - 136 | 6Nm |
| AC1702 | 155 - 170 | 110 - 125 | 6Nm |
| AC1703 | 155 - 170 | 130 - 145 | 6Nm |
| AC1922 | 170 - 192 | 110 - 122 | 6Nm |
| AC1923 | 170 - 192 | 121 - 136 | 6Nm |
| AC1924 | 170 - 192 | 144 - 160 | 6Nm |
| AC2000 | 180 - 200 | 130 - 145 | 6Nm |
| AC6001 | 180 - 200 | 144 - 160 | 6Nm |
| AC2001 | 180 - 200 | 155 - 170 | 6Nm |
| AC6000 | 180 - 200 | 160 - 180 | 6Nm |
| AC2100 | 185 - 210 | 100 - 115 | 6Nm |
| AC2101 | 185 - 210 | 160 - 180 | 6Nm |
| AC2152o/s | 195 - 215 | 100 - 115 | 6Nm |
| AC3108W | 285 - 310 | 240 - 265 | 6Nm |
| AC2154 | 190 - 215 | 150 - 165 | 6Nm |
| AC2254 | 200 - 225 | 160 - 175 | 6Nm |
| AC2352 | 210 - 235 | 110 - 122 | 6Nm |
| AC2353 | 210 - 235 | 121 - 136 | 6Nm |
| AC2354 | 210 - 235 | 144 - 160 | 6Nm |
| AC2355 | 210 - 235 | 170 - 192 | 6Nm |
| AC2356 | 210 - 235 | 190 - 215 | 6Nm |
| AC2654 | 240 - 265 | 144 - 160 | 6Nm |
| AC2655 | 240 - 265 | 170 - 192 | 6Nm |
| AC2656 | 240 - 265 | 190 - 215 | 6Nm |
| AC2657 | 240 - 265 | 210 - 235 | 6Nm |
| AC2754 | 250 - 275 | 160 - 175 | 6Nm |
| AC2756 | 250 - 275 | 200 - 225 | 6Nm |
| AC9001 | 260 - 285 | 180 - 205 | 13Nm |
| AC2904 | 265 - 290 | 144 - 160 | 13Nm |
| AC2907 | 265 - 290 | 210 - 235 | 13Nm |
| AC2908 | 265 - 290 | 235 - 260 | 13Nm |
| AC2956o/s | 270 - 295 | 185 - 210 | 13Nm |
| AC3204 | 295 - 320 | 144 - 160 | 13Nm |
| AC3205 | 295 - 320 | 170 - 192 | 13Nm |
| AC3207 | 295 - 320 | 210 - 235 | 13Nm |
| AC3208 | 295 - 320 | 240 - 265 | 13Nm |
| AC3209 | 295 - 320 | 265 - 290 | 13Nm |
| AC3351o/s | 310 - 335 | 180 - 205 | 13Nm |
| AC3608 | 335 - 360 | 240 - 265 | 13Nm |
| AC3609 | 335 - 360 | 265 - 290 | 13Nm |
| AC3600 | 335 - 360 | 295 - 320 | 13Nm |
| AC3858 | 360 - 385 | 240 - 265 | 13Nm |
| AC3859 | 360 - 385 | 265 - 290 | 13Nm |
| AC3850 | 360 - 385 | 300 - 325 | 13Nm |
| AC4208 | 395 - 420 | 240 - 265 | 13Nm |
| AC4209 | 395 - 420 | 265 - 290 | 13Nm |

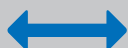


Connecting UltraRib to Clay



| | |
|--------------------|--|
| Product Code | ARXXXX |
| Description | Flexseal AR Adaptor Coupling |
| Size Range | 170 - 385 |
| Material | EPDM Rubber 1.4301 (304) Stainless Steel <i>Couplings with a different material makeup are available on request.</i> |
| Pressure Rating | 0.6bar, 8.70psi |
| Jetting Resistance | 180bar |
| Temperature Range | -50°C to 80°C constant, 100°C intermittent |
| Tightening Torque | 6Nm / 13Nm |
| Standards | BS EN 681-1:1995 BS EN 295-4:2013 BS EN 10088-2:1995 |

| Product Code | Size Range A (mm) | Size Range B (mm) | Tightening Torque |
|--------------|-------------------|-------------------|-------------------|
| AR1500 | 170 - 192 | 160 - 170 | 6Nm |
| AR2250 | 260 - 285 | 240 - 250 | 13Nm |
| AR3000 | 360 - 385 | 325 - 335 | 13Nm |

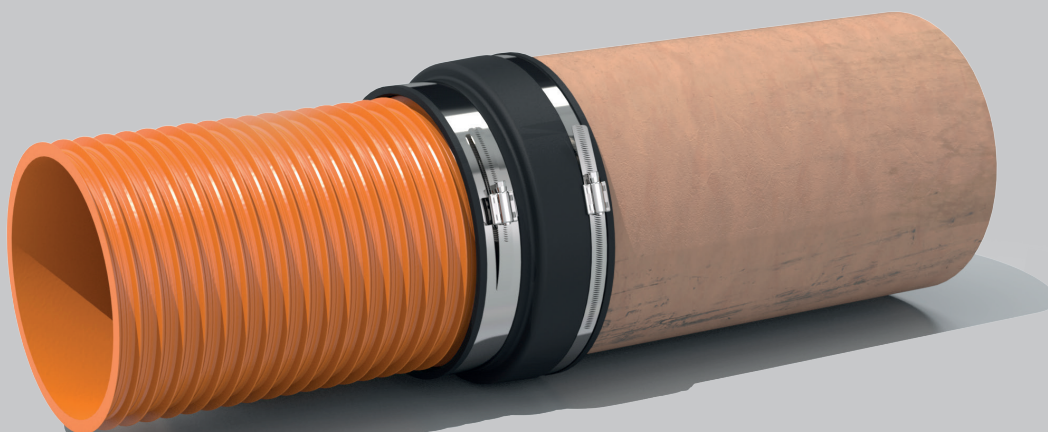


WIDE TENSION BAND

to create a reliable seal across multiple ribs and prevent the risk of 'slippage'.

35mm

16mm





Installation



1. Mark both pipes, from the end to be connected, half the width of the coupling, less the required joint gap, which is usually 10mm.



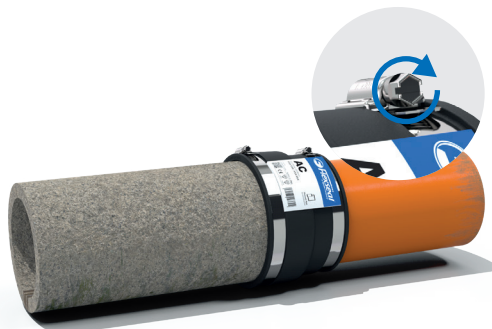
2. Slide the coupling fully onto the smallest pipe.



3. Align the pipes and slide the coupling onto the larger pipe, ensuring the coupling face and marked line are flush. Tighten this clamp band.



4. Position the smaller pipe, ensuring the coupling face and marked line are flush. Tighten this clamp band.



5. Tighten the clamp bands to the recommended torque.

Tamp the bedding under the pipe and re-tighten prior to backfilling.

General Information

Quality, Standards and Approvals

Flexseal has been certified by the British Standards Institution (BSI) as a company of assessed capability, with a quality management system which meets the requirements of BS EN ISO 9001:2015

Flexseal, part of the Fernco Group, are the leaders in wastewater connection innovation; utilising the most advanced methods and techniques for precision-manufactured products, all of which comply with or exceed relevant British and European standards to ensure reliability and sustainability.

Environment

Flexseal operate Environmental Management Systems which are certified to ISO 14001: 2004.

Supply

Flexseal are proud members of the Builders Merchants Federation (BMF). All Flexseal products are supplied through a national and global network of distribution and merchant partners. For stockist details, contact Flexseal.

Technical Support

Flexseal have a team of product experts on hand to support all customers with technical support and advice.

Contact Flexseal Technical Department:

Tel: +44 (0) 1226 344100

Email: technical@flexseal.co.uk

Enquiries

UK Sales:

Tel: +44 (0) 1226 340 888

Email: sales@flexseal.co.uk

International Sales:

Tel: +44 (0) 1226 344 105

Email: export.dept@flexseal.co.uk

