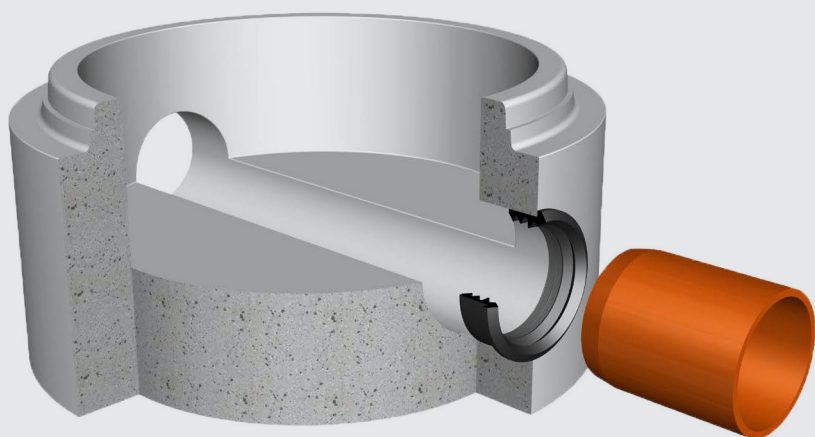


Wall Seals



Flexible connection
system for pipes
to manholes and
laterals to pipelines.

Seal Design and Function

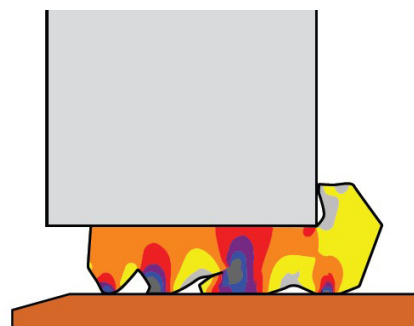
Wall Seals are a rubber seal for flexible connection of pipes to manholes and laterals to pipelines. It can be used with both prefabricated and core drilled holes.

The tripple lip design allows ease of jointing and provides excellent resistance to transvers shear load whilst allowing a high level of angular deflection in the joint.

The wide range of sizes available ensure the watertight connection of almost any pipe diameter and material.

Material

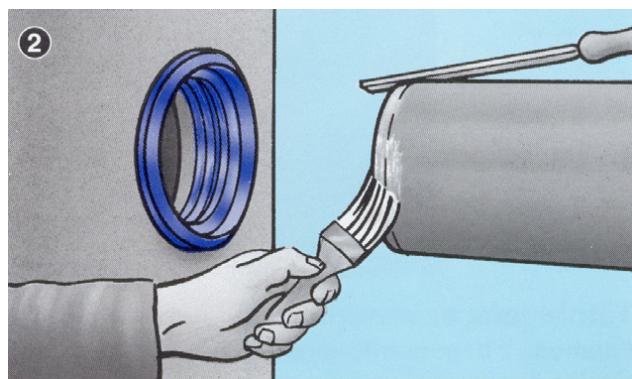
- EPDM Rubber
- Hardness 40±5 IRHD
- Approved in accordance with EN 681-1
- Protected against ozone
- Also available in oil resistant nitrile rubber



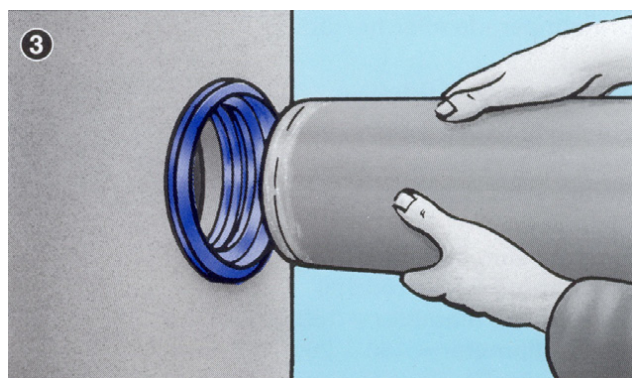
Joint Assembly



Press the F-910 seal into the hole.
Do not use lubricant.



Chamfer the edge of the connecting pipe and
lubricate.



Centre the end of the pipe and push it into the
seal, so that the pipe end is flush with the inner
wall.

Moulded Wall Seals

Product Ref	Pipe o/d	Hole Size
F1705406	40mm	75mm
F1584702	50mm	75mm
F1920802	63mm	89mm
F1642306	75mm	101mm
F1001803	90mm	111mm
F1588606	110mm	138mm
F1813704	118mm	144mm
F1568103	122mm	151mm
F1076606	160mm	181mm
F1568201	170mm	196mm
F1081204	180mm	206mm
F1891706	200mm	226mm

Fabricated Wall Seals

(manufactured to site requirements)

Product Ref	Pipe o/d	Hole Size
F910200	Manufactured to site measurement 200-299	Pipe o/d +26mm
F910300	Manufactured to site measurement 300-399	Pipe o/d +26mm
F910400	Manufactured to site measurement 400-499	Pipe o/d +26mm
F910500	Manufactured to site measurement 500-599	Pipe o/d +26mm
F910600	Manufactured to site measurement 600-699	Pipe o/d +26mm
F910700	Manufactured to site measurement 700-799	Pipe o/d +26mm
F910800	Manufactured to site measurement 800-899	Pipe o/d +26mm
F910900	Manufactured to site measurement 900-999	Pipe o/d +26mm
F9101000	Manufactured to site measurement 1000-1099	Pipe o/d +26mm

Please contact Flexseal for technical advice and joint design
recommendations to meet your performance requirements.
Pipe connections with F-910 shall always be laid in accordance
with applicable standards and regulations.