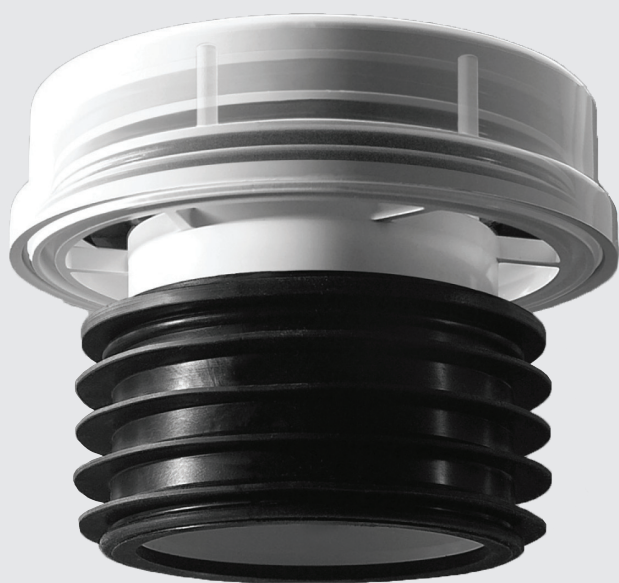


Global leaders in flexible couplings,
drainage & plumbing systems



Air Admittance Valves



FAF32W - 32/40/50mm Universal

FAV110W - 110mm Solvent Weld

FRG110W - 110/82mm Push Fit

The Air Admittance Valves (AAV) allow air to freely enter the sanitary pipe work system and prevents the escape of foul gases into the building. They are suitable for 32-110mm waste and soil pipes.

They also carry the British Standards Institution (BSI) Kitemark (KM512474) as having met the performance requirements of BS EN 12380 : 2002 and have been designated with an A1 rating.

Benefits

- Removes the need to penetrate the outer roof shell.
- Admit air under conditions of reduced pressure in the discharge pipes and prevent water seals in traps from being drawn or evacuated.
- Prevent the release of foul air from the drainage system.
- Contribute to the ventilation of the main drain to which the discharge stack incorporating the valve is connected.
- Environmentally friendly - no foul gases emitted.
- The 32mm and 40mm valves are designed for connection to waste pipes to prevent water loss from trap seals by self and induced siphonage arising from water flow in small diameter branch discharge pipes.
- The 50mm valve is for use on branch discharge pipes.
- The 82mm and 110mm valves are designed for use on discharge stacks up to 45 metres or 10 storeys high.

V006Nov17