

# Domestic Channel Drain

## Storm Drain Plus



Storm Drain Plus channels are available in 1 metre sections. They feature 3 vertical outlets for flexibility, as well as horizontal entry/outlet points which can be connected to either 100mm or 110mm pipes. The complete range of accessories combines to create a full, flexible system, with features for easy installation.

Storm Drain Plus is offered with Heelguard grates as standard, in a choice of black plastic or galvanised finishes. The grills conform to BS EN 1433: Class A15 and can withstand a 1.5 tonne loading. The system can therefore be installed in pedestrian areas, on sports pitches, at swimming pools, in walkways and where light vehicles may drive over.

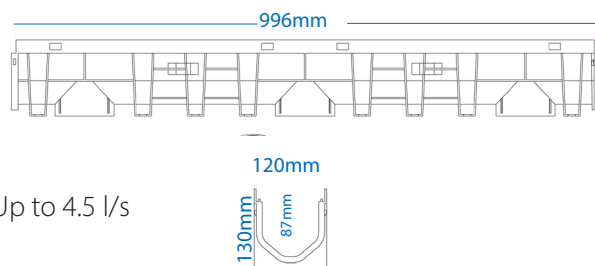
### Benefits

- Heelguard grates as standard
- Recycled and recyclable base material
- Conforms to BS EN 1433 - Load Class A15
- Labour saving quad connector
- Sump unit with integral water trap to prevent odours
- Improved male to female connections
- Cross-braced design prevents floating
- Lightweight polypropylene, with a high impact strength at hot and cold temperatures

### Technical Information

Material: Recycled and recyclable body in Polypropylene;  
Reinforcing bracket to avoid deformation

Dimensions:



Flow capacity: Up to 4.5 l/s

Global leaders in flexible couplings,  
drainage & plumbing systems



## Product Range

Product Code	Description	Length (m)	Weight (Kg)
STDP1000	Channel with black plastic grate	1	2.08
STDP1000G	Channel with galvanised grate	1	2.99
STDPQC	Quad connector in black plastic	0.123	0.28
STDPQCG	Quad connector with galvanised grate	0.123	0.45
STDPEC	Secure end cap	N/A	0.05
STDPEO/100	End outlet 100 mm	N/A	0.08
STDPEO/110	End outlet 110 mm	N/A	0.08
STDPSUMP	Sump unit with silt basket and water trap with black plastic grate	0.33 (0.39 deep)	
STDPSUMPGG	Sump unit with silt basket and water trap with galvanised grate	0.33 (0.39 deep)	
STDPLKIT	Bracket with locking screws		
CHANNELCLIP	Joining clip for the secure connection of two cut channels		



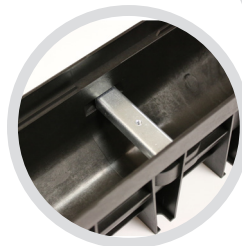
Quad  
connector



Joining clip



Sump unit



Support bracket



End outlet



End cap

**Channel Drain Garage Pack**, with 3 x 1m channels, end cap & outlet.  
Available with plastic or galvanised grate

Product Code	Description	Length (m)	Weight (Kg)
STDPGP/100	Black plastic grate, 100 mm outlet	1 (x 3 qty)	6.90
STDPGPG/100	Galvanised grate, 100 mm outlet	1 (x 3 qty)	9.65
STDPGP/110	Black plastic grate, 110 mm outlet	1 (x 3 qty)	6.90
STDPGPG/110	Galvanised grate, 110 mm outlet	1 (x 3 qty)	9.65



V001JUN16