

# Multibush

*3 connection options with 1 product*



The Flexseal Multibush combines three standard bushes into one product by allowing the user to fold the product into different thicknesses.

This is ideal when it's unclear which pipe materials need to be connected as it will connect pipes of any standard wall thickness. For example a 100mm Multibush can act as a 3mm, a 6mm or a 9mm bush and connect a clay to PVC, clay to cast iron, ductile iron to twinwall and many more.



Pipe Size	Products	Equivalent bush thickness		
DN100	SC137 & MB100	9mm	6mm	3mm
DN150	SC200 & MB150	12mm	8mm	4mm



The Flexseal Multibush can be cut into sections via the fold and used as a singular bushes. See above.

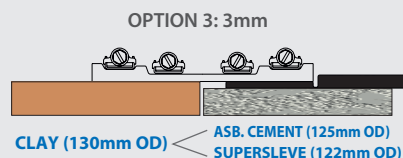
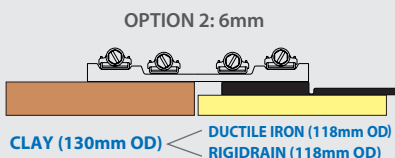
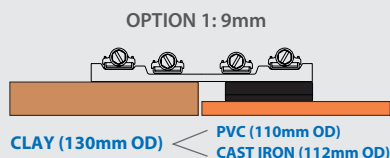
Scan this for a demo movie



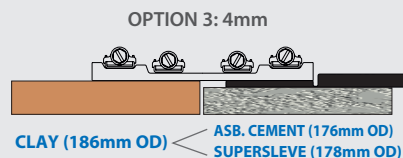
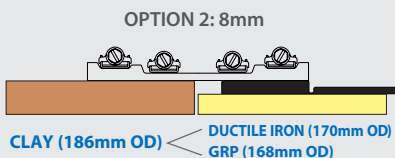
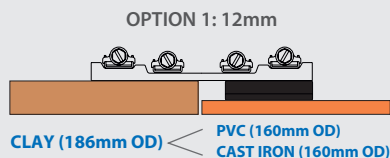
## Using 1 x Multibush



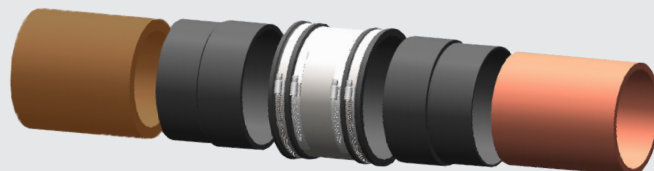
Connecting DN100 pipe with SC137 and MB100 Multibush...



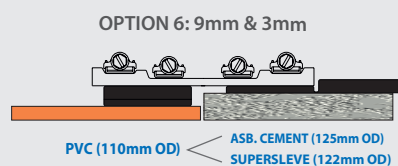
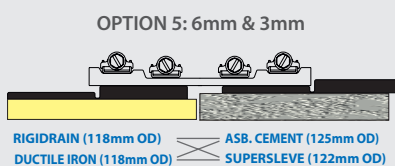
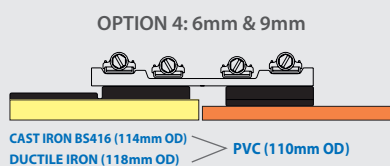
Connecting DN150 pipe with SC200 and MB150 Multibush...



## Using 2 x Multibush



Connecting DN100 pipe with SC137 and MB100 Multibush...



Connecting DN150 pipe with SC200 and MB150 Multibush...

