



New AltroBead™ Technology

Giving a unique,
soft and domestic look!

Altro Pisces™

Shoe and barefoot
safety flooring

www.altro.com

the future is safer with altro

Altro Pisces™

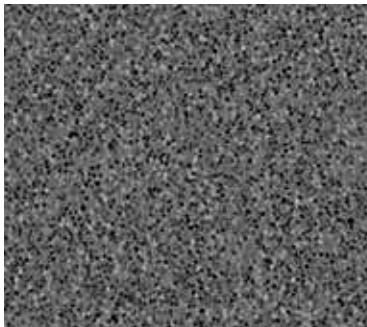
Shoe and barefoot safety flooring



Jellyfish SB2005
WR388 / A1M388 / LRV 46



Porthole SB2007
WR390 / A1M390 / LRV 30



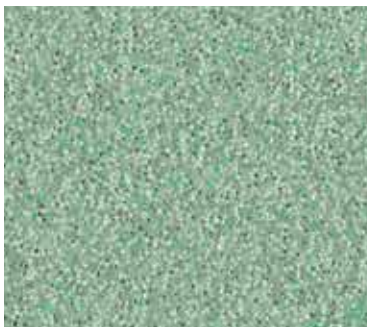
Anchor SB2008
WR391 / A1M82 / LRV 16



Deckchair SB2013
WR396 / A1M396 / LRV 50



Sea Urchin SB2014
WR397 / A1M397 / LRV 34



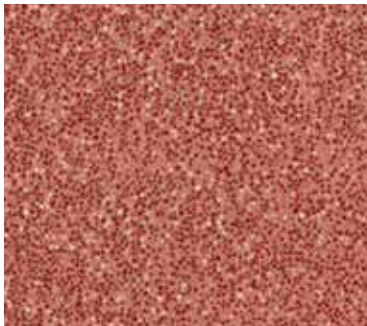
Windbreak SB2016
WR399 / A1M399 / LRV 38



Seahorse SB2011
WR394 / A1M394 / LRV 47



Beach Hut SB2012
WR395 / A1M395 / LRV 37



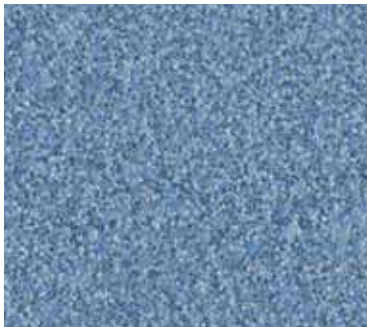
Starfish SB2010
WR393 / A1M393 / LRV 21



Fisherman SB2009
WR392 / A1M392 / LRV 48

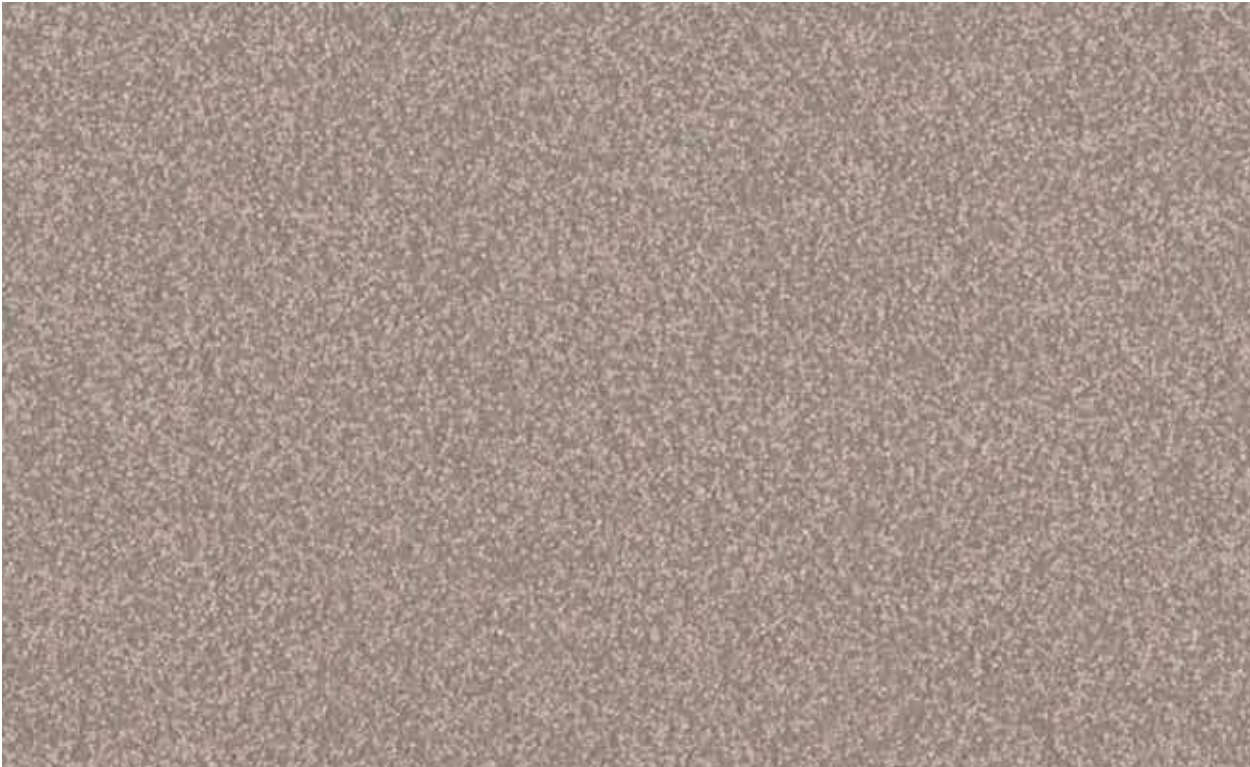


Breakwater SB2003
WR386 / A1M20 / LRV 42



Houseboat SB2015
WR398 / A1M398 / LRV 25

Light Reflectance Values measured in accordance with BS8493:2008.
Exact material match with samples cannot be guaranteed.
Codes: WR = weld rod, A1M = mastic, LRV = light reflectance value



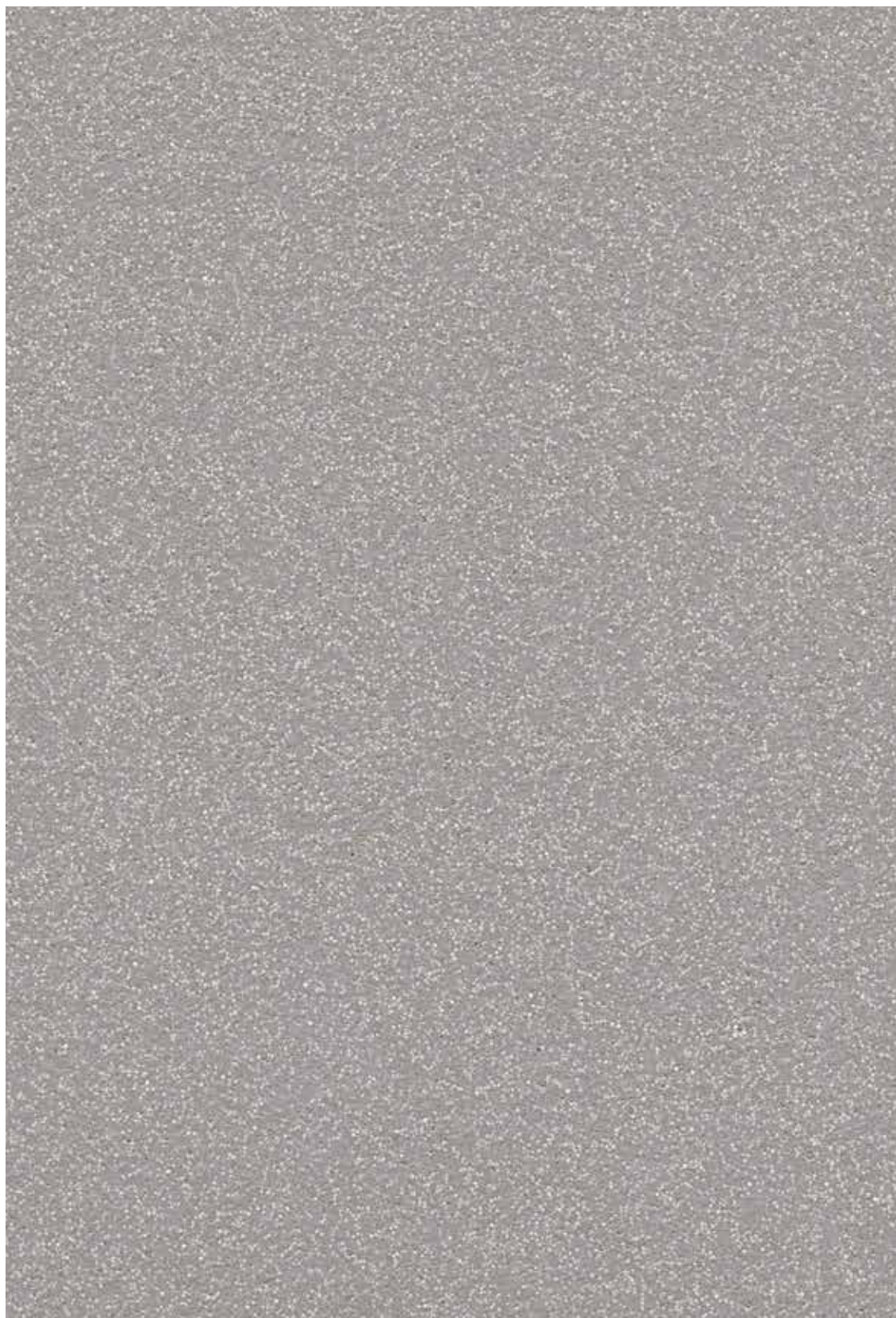
Driftwood SB2004
WR387 / A1M387 / LRV 32



Lighthouse SB2001
WR291 / A1M01 / LRV 70



Cuttlefish SB2002
WR385 / A1M385 / LRV 50



Shoreline SB2006
WR389 / A1M389 / LRV 38



Missing my brochure?
Visit www.altro.co.uk/Altro-Pisces
to discover more

Typical applications:

Bathrooms. Showers. Wet environments in social care; home adaptations, social housing. Student accommodation. Swimming pool surrounds. Saunas. Spas. Changing rooms*.



Slip resistance
Tested with:
Soapy water
Shower gel
Talcum powder
Conditioner
Glycerine

Suitable for:

- **Wet and dry areas**
- **All shoes or bare feet**













**In changing rooms where spikes and studs are used, we recommend Altro Atlas™ 40*

Looks great with:

Altro Whiterock White™ / Altro Whiterock Satins™ / Altro Whiterock Chameleon™ / Altro Whiterock Digiclad™ / Altro Suprema™ / Altro Wood Safety™

i Technical information

Flooring type	Slip resistance	Thickness	Weight	Roll dimensions	Fire performance
 	 			 	
EN 13845 EN 13553	TRRL EN 13845 EN 13893 DIN 51130 DIN 51097	EN 428	EN 430	EN 426	EN 13501-1 EN ISO 9239-1 EN ISO 11925-2
Safety flooring	≥ 50 (slider 96) ESf & ESb DS R11 Class B	2 mm	2.6 kg/m²	2 m x 20 m - 40 m²	Bfl s1 ≥8kW/m² pass
<div><div></div><div>For further technical information please visit www.altro.com</div></div> <div><div>Patent No. GB 2 462 167</div><div>Patent No. GB 2 496 644</div></div>					



Sustainability

Altro are the first safety flooring manufacturer to recycle traditional safety flooring in-house



A+ BRE Generic Green Guide Rating for safety flooring, full details available at www.thegreenguide.org.uk



+44 (0) 1462 707 700
www.altro.com
enquiries@altro.com



Installation and Maintenance

All Installations in accordance with Altro safety flooring instructions and local codes of practice. Please refer to Altro cleaning card for maintenance information. Failure to install and maintain Altro flooring in accordance with installation instructions can affect its performance and slip resistance. Floors should be protected from other trades and thoroughly cleaned before handover. Traffic stain can be caused by oil residue, certain cleaning agents, asphalt and anti-oxidants in some types of rubber.

Caution

Ketone / aromatic solvents. Please contact Altro for further technical guidance regarding staining and chemical resistance. Certain chemicals may cause staining of vinyl.